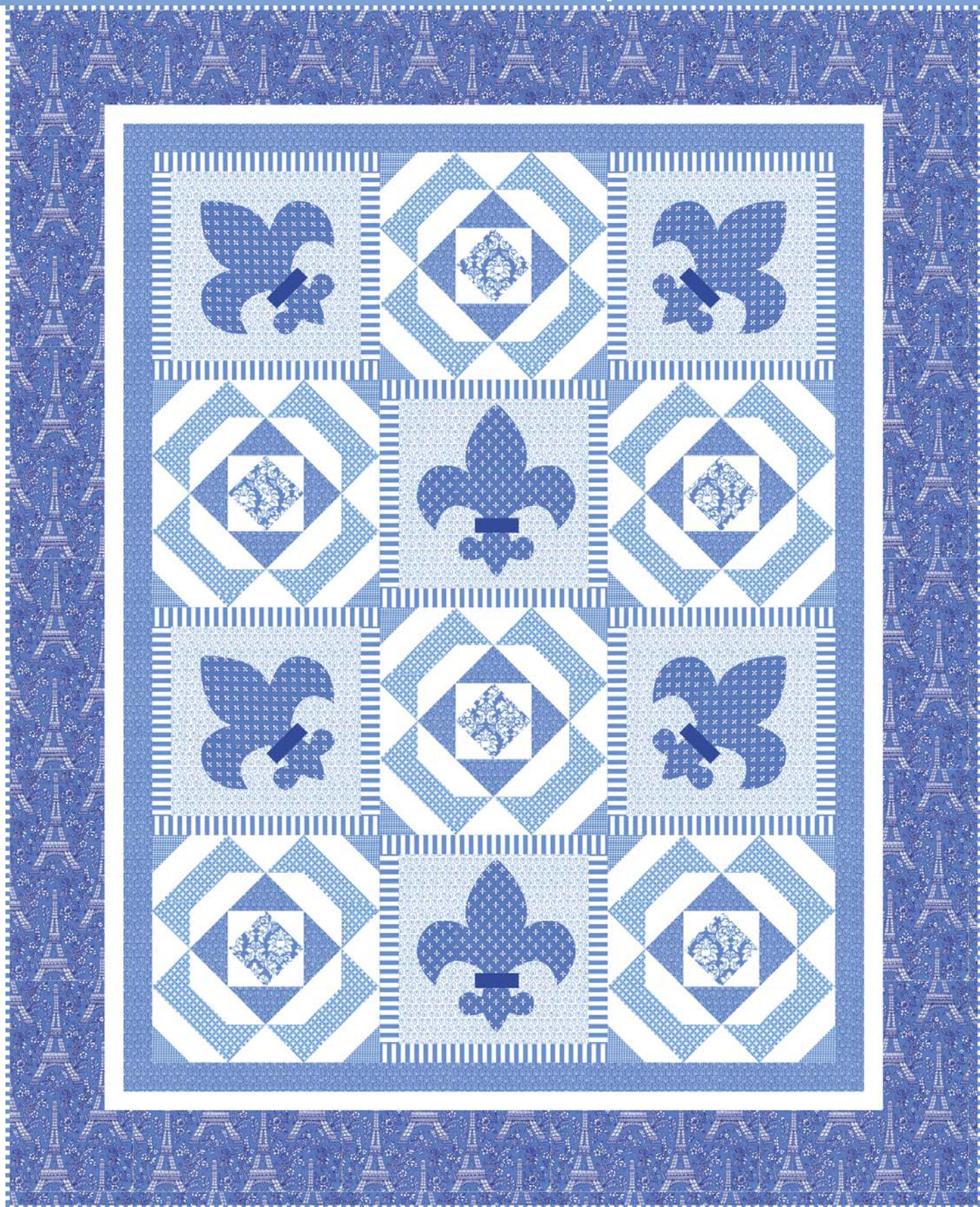


PETITE PARIS | It's A Boy

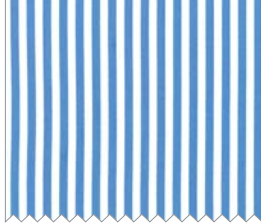


SIZE: 51" W X 63" H | QUILT DESIGNED BY HEIDI PRIDEMORE | SKILL LEVEL: INTERMEDIATE

FABRIC REQUIREMENTS



CX1248_BLUE
EIFFEL TOWER
1 2/3 YARDS



CX3584_BLUE
CLOWN STRIPE
1 YARD



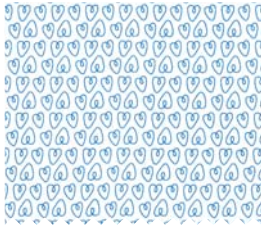
CX4834_BLUE
TINY GINGHAM
1/4 YARD



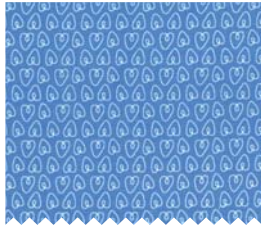
CX6557_DELFT
PETITE DANDY DAMASK
1/4 YARD



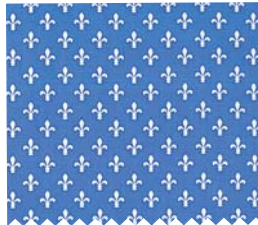
SC5333_COBALT
COTTON COUTURE
1/8 YARD



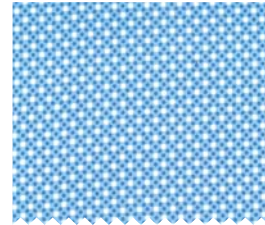
CX6555_BLUE
PETITE HEARTS
3/4 YARD



CX6555_DELFT
PETITE HEARTS
1/3 YARD



CX6556_DELFT
PETITE FLEUR DE LIS
1/2 YARD



CX6322_SAILOR
DIM DOTS
2/3 YARD



SC5333_BRIGHT WHITE
COTTON COUTURE
1 1/4 YARDS



CX6554_BLUE
PETITE PARIS
3 1/2 YARDS (BACKING)

We do our best to make sure these are accurate yardages but these are estimates until the final pattern is completed and edited. Thank you.

"Petite Paris - It's A Boy"

Quilt by Heidi Pridemore

Size: Approximately 51" x 63" Skill Level: Intermediate

Materials

Cutting instructions

Please Note: All strips are cut across the width of fabric (WOF) from selvage to selvage edge.

	Fabric	Yardage	Cutting
(A)	CX6556-Delft Petite Fleur de Lis – Delft	½ yard	• See instructions to cut six Fleur de Lis.
(B)	CX6555-Blue Petite Hearts – Blue	¾ yard	• Cut two 10 ½" x WOF strips. Sub-cut the strips into six 10 ½" squares.
(C)	CX3584-Blue Stripe – Blue	1 yard	• Cut one 12 ½" x WOF strip. Sub-cut the strip into twelve 1 ½" x 12 ½" strips and twelve 1 ½" x 10 ½" strips. • Cut six 2 ½" x WOF strips for the binding.
(D)	SC5333-Cobalt Cotton Couture – Cobalt	⅞ yard	• See instructions to cut six Fleur de Lis bars.
(E)	CX4834-Blue Tiny Gingham – Blue	¼ yard	• Cut one 2 ⅞" x WOF strip. Sub-cut the strip into twelve 2 ⅞" squares.
(F)	CX6322-Sailor Dim Dots – Sailor	⅔ yard	• Cut one 2 ⅞" x WOF strip. Sub-cut the strip into twelve 2 ⅞" squares. • Cut three 4 ½" x WOF strips. Sub-cut the strips into forty-eight 2 ½" x 4 ½" strips.
(G)	CX6555-Delft Petite Hearts – Delft	⅔ yard	• Cut two 4 ½" x WOF strips. Sub-cut the strips into twenty-four 2 ½" x 4 ½" strips. • Cut three 2" x WOF strips. Sew the strips together, end to end with diagonal seams, and cut two 2" x 48 ½" strips. • Cut two 2" x 39 ½" strips.
(H)	CX6557-Delft Petite Dandy Damask – Delft	¼ yard	• Cut one 4 ½" x WOF strip. Sub-cut the strip into six 4 ½" squares.
(I)	CX1248-Blue Eiffel Tower – Blue	1 ⅔ yards	• Cut two 5 ½" x 53 ½" from LOF. • Cut four 5 ½" x WOF strips from the remaining fabric. Sew the strips together, end to end with diagonal seams, and cut two 5 ½" x 51 ½" strips.
(J)	SC5333-Bright White Cotton Couture – Bright White	1 ¼ yards	• Cut two 2 ⅞" x WOF strips. Sub-cut the strips into twenty-four 2 ⅞" squares. • Cut eleven 2 ½" x WOF strips. Sub-cut the strips into (168) 2 ½" squares. • Cut three 1 ½" x WOF strips. Sew the strips together, end to end with diagonal seams, and cut two 1 ½" x 51 ½" strips. • Cut two 1 ½" x 41 ½" strips.
Backing	CX6554-Blue Petite Paris – Blue	3 ½ yards	• Cut two 59" x WOF strips. Piece the strips together and trim to make the 59" x 71" pieced backing.

You will also need:

- 59" x 71" batting, threads to match, scissors, straight pins, acrylic ruler, rotary cutter and mat.

Disclaimers

This pattern is provided as a courtesy to quilt stores, catalogs and quilters. Michael Miller Fabrics, LLC is not responsible for the accuracy of any kits packaged to accompany this pattern. Please direct any inquiries to the kit maker.

Yardage requirements for this pattern may allow for excess yardage to accommodate specific placement of motifs or to allow for any fussy-cutting to achieve the finished quilt design.

While every attempt has been made to give accurate measurements, yardage requirements and construction directions; this does not allow personal variations in measuring, cutting or sewing. The enclosed directions were used in the construction of the original quilt.

Block Assembly

1. Following the manufacturer's instructions, trace the listed number of each template onto the paper side of the fusible web. Roughly cut out each template about 1/8" outside the drawn lines.
2. Press each template onto the wrong side of the fabrics as listed on the templates. Cut out each template on the drawn lines.
3. Refer to the quilt photo to arrange and press the six Fleur de Lis and six bars onto six 10 1/2" Fabric B squares. Pay attention to the orientation of the Fleur de Lis and the bars. Two lean to the left, two lean to the right and two are straight up and down.
4. Finish the raw edges of each shape with a decorative stitch such as a buttonhole or satin stitch to complete the six applique blocks.
5. Sew one 1 1/2" x 10 1/2" Fabric C strip to each side of one applique block. Sew one 1 1/2" x 12 1/2" Fabric C strip to the top and to the bottom of the applique block to make one Block One (Fig. 1). Repeat to make six Block Ones total.
6. Place one 2 7/8" Fabric E square on top of one 2 7/8" Fabric J square, right sides together. Draw a line across the diagonal of the top square (Fig. 2). Sew 1/4" away from each side of the drawn diagonal line (Fig. 2). Cut the two squares apart on the drawn diagonal line (Fig. 3) to make EJ units (Fig. 4). Trim the EJ units to measure 2 1/2" square. Repeat to make twenty-four EJ units total.
7. Repeat Step 6 using twelve 2 7/8" Fabric F squares and twelve 2 7/8" Fabric J squares to make twenty-four 2 1/2" FJ units (Fig. 5).

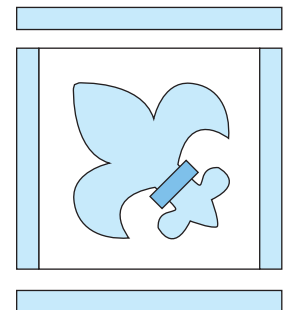


Fig. 1 make 6

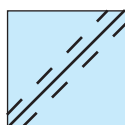


Fig. 2

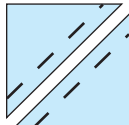


Fig. 3

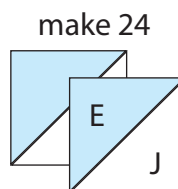


Fig. 4

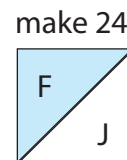
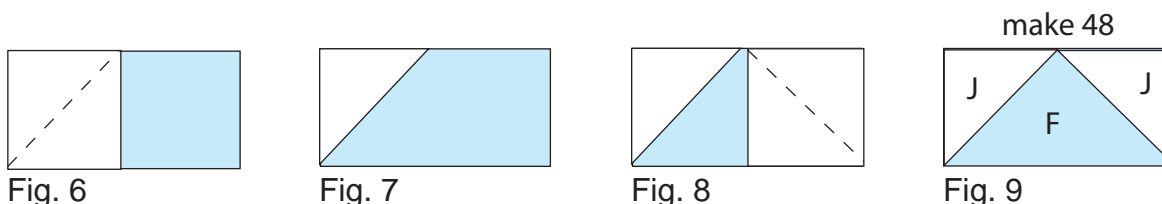
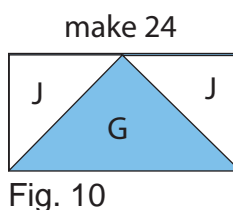


Fig. 5

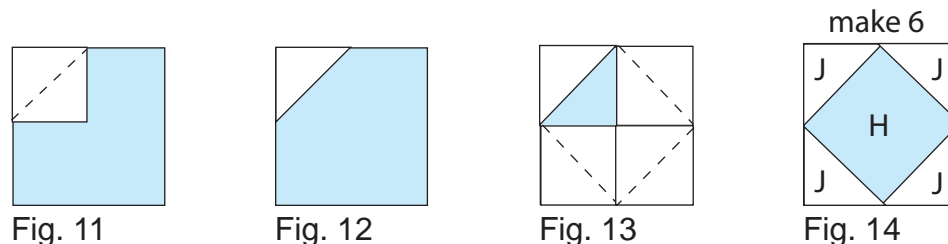
8. Place one 2 ½" Fabric J square on the left side of one 2 ½" x 4 ½" Fabric F strip, right sides together (Fig. 6). Sew across the diagonal of the square from the upper right corner to the lower left corner (Fig. 6). Flip open the triangle formed and press (Fig. 7). Trim away the excess fabric from behind the triangle, leaving a ¼" seam allowance.
9. Place another 2 ½" Fabric J square on the right side of the 2 ½" x 4 ½" Fabric F strip, right sides together (Fig. 8). Sew across the diagonal of the square from the upper left corner to the lower right corner (Fig. 8). Flip open the triangle formed and press (Fig. 9). Trim away the excess fabric from behind the triangle, leaving a ¼" seam allowance to complete one JFJ unit.



10. Repeat Steps 8-9 to make forty-eight JFJ units total.
11. Repeat Steps 8-9 using twenty-four 2 ½" x 4 ½" Fabric G strips and forty-eight 2 ½" Fabric J squares to make twenty-four JGJ units (Fig. 10).



12. Place one 2 ½" Fabric J square on the top left corner of one 4 ½" Fabric H square, right sides together (Fig. 11). Sew across the diagonal of the smaller square from the upper right corner to the lower left corner (Fig. 11). Flip open the triangle formed and press (Fig. 12). Trim away the excess fabric from behind the triangle ¼" away from the sewn seam.
13. Follow Figure 13 for the seam direction to add a 2 ½" Fabric J square to each of the remaining corners of the 4 ½" Fabric H square to make one Block Two center (Fig. 14).



14. Repeat Steps 12-13 to make six Block Two centers total.

15. Follow Figure 15 and sew four EJ units, eight JFJ units, four FJ units, four JGJ units and one Block Two center together to make one Block Two. Repeat to make six Block Twos total.

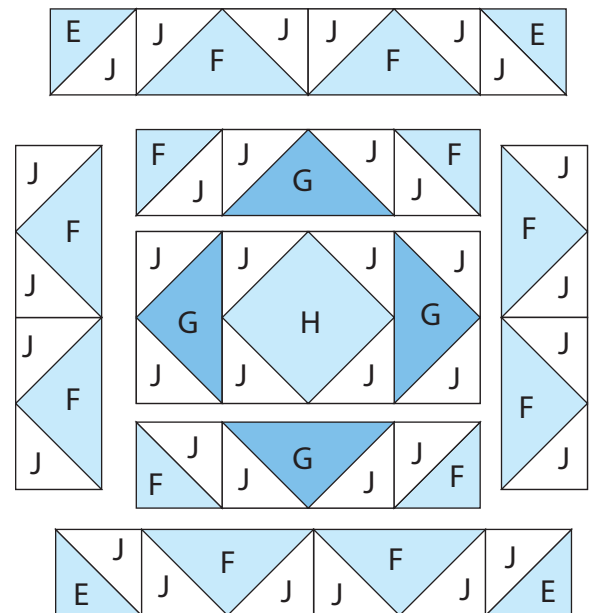
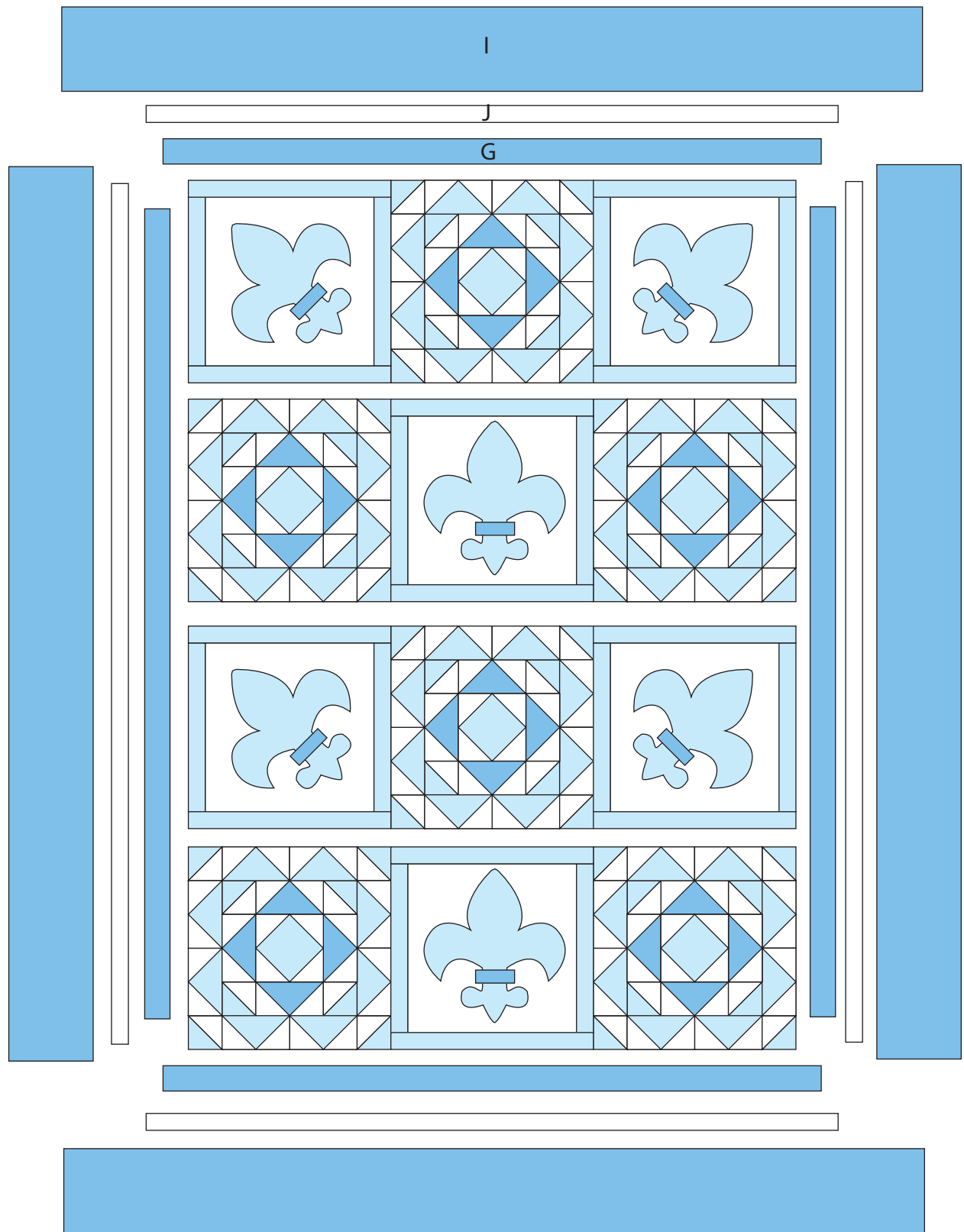


Fig. 15

Quilt Top Assembly (*Refer to the Quilt layout while assembling the quilt top.*)

16. Sew one Block One to each side of one Block Two to make Row One. Repeat to make Row Three. Pay attention to the orientation of the Block Ones.
17. Sew one Block Two to each side of one Block One to make Row Two. Repeat to make Row Four. Pay attention to the orientation of the Block Ones.
18. Sew the four rows together, in numerical order, to make the quilt top.
19. Sew one 2" x 48 ½" Fabric G strip to each side of the quilt top. Sew one 2" x 39 ½" Fabric G strip to the top and to the bottom of the quilt top.
20. Sew one 1 ½" x 51 ½" Fabric J strip to each side of the quilt top. Sew one 1 ½" x 41 ½" Fabric J strip to the top and to the bottom of the quilt top.
21. Sew one 5 ½" x 53 ½" Fabric I strip to each side of the quilt top. Sew one 5 ½" x 51 ½" strip to the top and to the bottom of the quilt top.
22. Layer and quilt as desired.
23. Sew the six 2 ½" x WOF Fabric C strips together, end-to-end with 45-degree seams, to make the binding. Fold this long strip in half lengthwise with wrong sides together and press
24. Bind as desired.



Quilt Layout

