

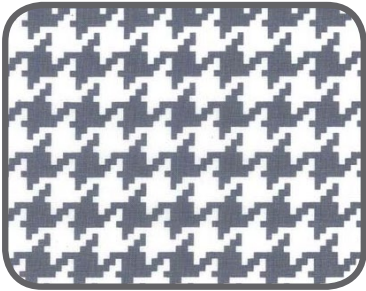
HOUNDSTOOTH TRUCK



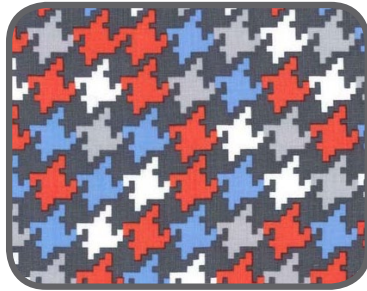


FABRIC REQUIREMENTS

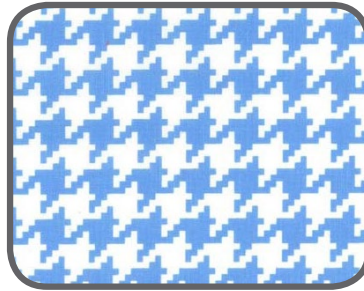
Quilt Size: 42 1/2" x 48 1/2"



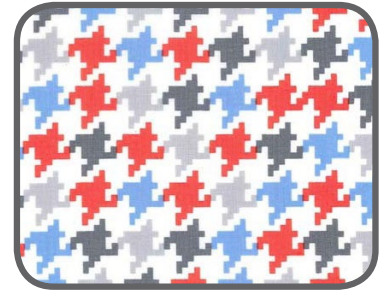
CX6363 Gray
Everyday Houndstooth
1/4 yard



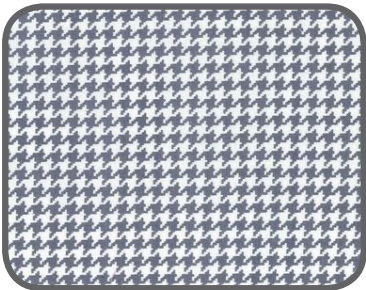
CX6363 Mineral
Everyday Houndstooth
1/4 yard



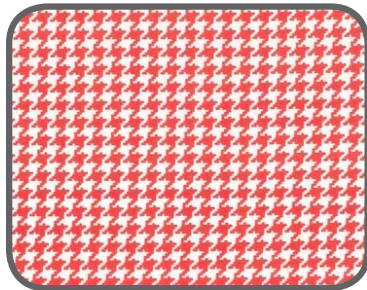
CX6363 Boy
Everyday Houndstooth
1/4 yard



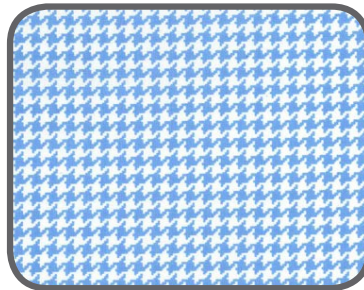
CX6363 Ozone
Everyday Houndstooth
1/2 yard



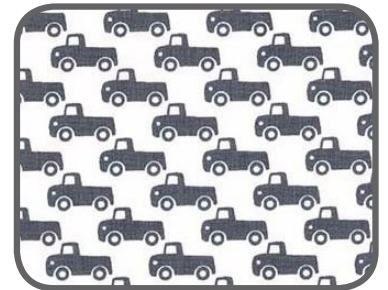
CX4835 Gray
Tiny Houndstooth
1/4 yard



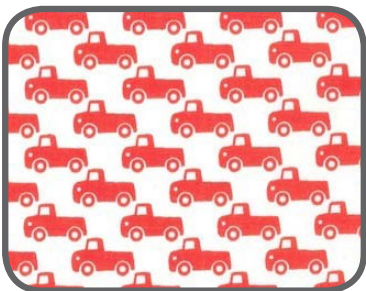
CX4835 Paprika
Tiny Houndstooth
1/4 yard



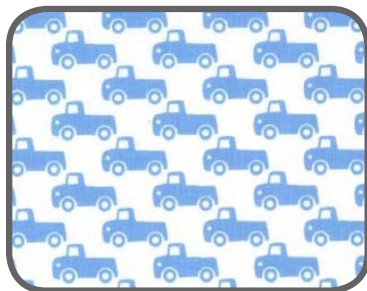
CX4835 Boy
Tiny Houndstooth
1/4 yard



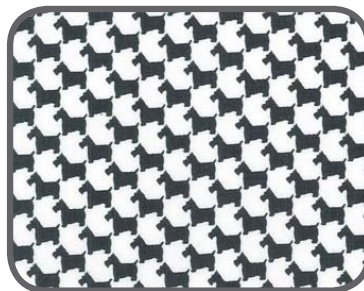
CX6358 Gray
Tiny Trucks
1/4 yard



CX6358 Paprika
Tiny Trucks
1/4 yard



CX6358 Sailor
Tiny Trucks
1/4 yard



CX6359 Gray
Scottie Houndstooth
1/4 yard



CX6359 Sailor
Scottie Houndstooth
1/4 yard



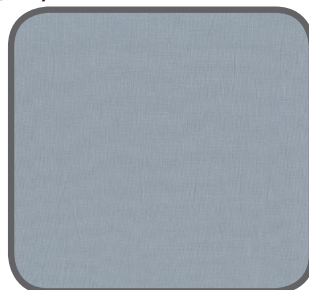
CX6360 Paprika
Argyle Me
1/4 yard



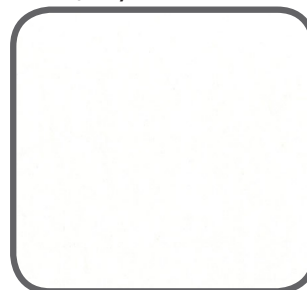
CX6360 Sailor
Argyle Me
1/3 yard



CX6492 Gray
Ricky Raccoon
1 1/2 yards



SC5333 Fog
Cotton Couture
1/8 yard



SC5333 Bright White
Cotton Couture
5/8 yard

"Houndstooth Truck"

Quilt by Ellen Maxwell

Size: Approximately 42 1/2" x 48 1/2"

Materials

Fabric	Yardage	Cutting
CX6363 Gray Everyday Houndstooth	1/4 yard	Used in the appliqué of the truck pattern
CX6363 Mineral Everyday Houndstooth	1/4 yard	Used in the appliqué of the truck pattern
CX6363 Boy Everyday Houndstooth	1/4 yard	Used in the appliqué of the truck pattern
CX6363 Ozone Everyday Houndstooth	1/2 yard	(2) strips of 6 1/2" x W.O.F.
CX4835 Gray Tiny Houndstooth	1/4 yard	(2) strips of 2 1/2" x W.O.F. Cut into (8) 2 1/2" x 6 1/2" rectangles
CX4835 Paprika Tiny Houndstooth	1/4 yard	(1) strip of 2 1/2" x W.O.F. Cut into (6) 2 1/2" x 6 1/2" rectangles
CX4835 Boy Tiny Houndstooth	1/4 yard	(2) strips of 2 1/2" x W.O.F. Cut into (8) 2 1/2" x 6 1/2" rectangles
CX6358 Gray Tiny Trucks	1/4 yard	(1) strip of 6 1/2" x W.O.F. Cut into (6) 2 1/2" x 6 1/2" rectangles
CX6358 Paprika Tiny Trucks	1/4 yard	(1) strip of 6 1/2" x W.O.F. Cut into (8) 2 1/2" x 6 1/2" rectangles
CX6358 Sailor Tiny Trucks	1/4 yard	(1) strip of 6 1/2" x W.O.F. Cut into (6) 2 1/2" x 6 1/2" rectangles
CX6359 Gray Scottie Houndstooth	1/4 yard	(2) strips of 3 1/2" x W.O.F. Cut into (8) 3 1/2" x 6 1/2" rectangles
CX6359 Sailor Scottie Houndstooth	1/4 yard	(1) strip of 3 1/2" x W.O.F. Cut into (6) 3 1/2" x 6 1/2" rectangles
CX6360 Paprika Argyle Me	1/4 yard	(2) strips of 2 1/2" x W.O.F.
CX6360 Sailor Argyle Me	1/3 yard	(5) strips of 2 1/4" x W.O.F.
CX6492 Gray Ricky Raccoon	1 1/2 yards	Use for backing
SC5333 Fog Cotton Couture	1/8 yard	Used in the appliqué of the truck pattern
SC5333 Bright White Cotton Couture	5/8 yard	(1) 11 1/2" x 42 1/2" (3) 2 1/2" x W.O.F. – Cut into (42) 2 1/2" x 2 1/2" squares

Disclaimers

This pattern is provided as a courtesy to quilt stores, catalogs, and quilters. Michael Miller Fabrics, LLC is not responsible for the accuracy of any kits packaged to accompany this pattern. Please direct any inquiries to the kit maker.

Yardage requirements for this pattern may allow for excess yardage to accommodate specific placement of motifs or to allow for any fussy-cutting to achieve the finished quilt design.

While every attempt has been made to give accurate measurements, yardage requirements, and construction directions; this does not allow personal variations in measuring, cutting, and or sewing. The enclosed directions were used in the construction of the original quilt.

Directions:

1. Cut white strip 11 1/2" x 42 1/2". Prepare 3 trucks for applique (see photo). Sample features needle turn applique.
* A scant 1/4" must be added to all parts of truck pattern for this style.
Machine applique is also an option.
Additional seam allowance would not be needed.
Center first truck in center of fabric strip. Pin and applique in place. Then repeat with two additional trucks.
* Trim strip to 10 1/2" x 42 1/2" - cutting 1/2" from the top and from the bottom. Press - backside.
2. Cut CX6359 Scottie Houndstooth:
(8) Gray - 3 1/2" wide x 4 1/2" long
(6) Sailor - 3 1/2" wide x 4 1/2" long
Sew in 2 strips of 7. Alternate colors, always starting and ending with gray 1/4" seams.
* Be sure Scottie Dogs are all facing the same direction
Press.
Sew one strip to the top of applique strip and one strip to the bottom. Press.
3. Cut 2 strips of CX6360 Paprika (Argyle Me) fabric - 2 1/2" x 42 1/2"
Sew one strip to the top of quilt section (made in steps 1 & 2) and one strip to the bottom. Press.
4. Cut 3 strips of White fabric - 2 1/2" x W.O.F.
Cut into 42 squares. 2 1/2" x 2 1/2".
Cut 2 1/2" x 6 1/2" rectangles as follows:
(8) CX4835 Tiny Houndstooth Gray - (6) Gray trucks
(8) CX4835 Tiny Houndstooth Sailor - (6) Sailor trucks
(8) CX4835 Tiny Houndstooth Paprika - (6) Paprika trucks
5. Assemble strip sets.
Look at quilt photo for layout.
Layout one strip set - (21) 2 1/2" x 6 1/2" rectangles.
Refer to the two diagrams on the next page.
Follow diagram and layout 2 1/2" x 2 1/2" white squares.
1/4" seams using sew white squares to rectangles. Press.
Sew strips together. Press.
Sew strip set to the top the quilt section. Press.
6. Cut strips of multi white background.
Large Houndstooth
(1) 6 1/2" x 42 1/2"
Sew to the top of the quilt section. Press.

