

Owlery Quilt



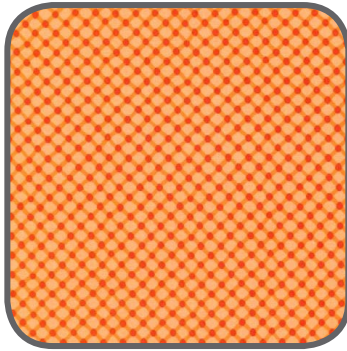
Quilt designed by Ellen Maxwell - Size 42 1/2" x 42 1/2"



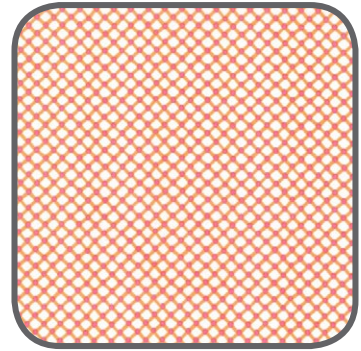
FABRIC REQUIREMENTS



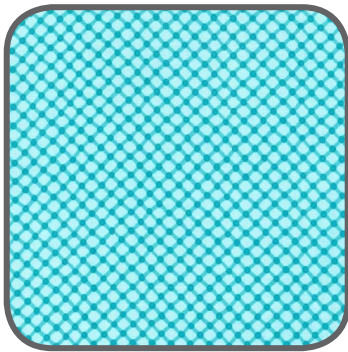
CX6355 Canary
Owlery
1 1/4 yard



CX5911 Orange
Cora
1/8 yard



CX5911 Sorbet
Cora
1/8 yard



CX5911 Aqua
Cora
1/8 yard



CX3584 Mint
Clown Stripe
1/8 yard



CX3584 Luna
Clown Stripe
1/8 yard



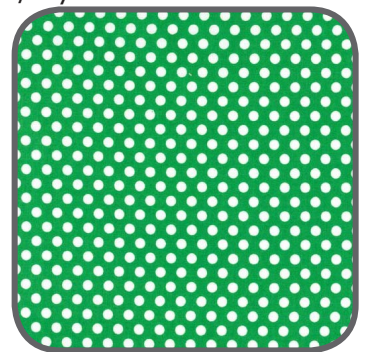
CX5911 Pink
Cora
1/8 yard



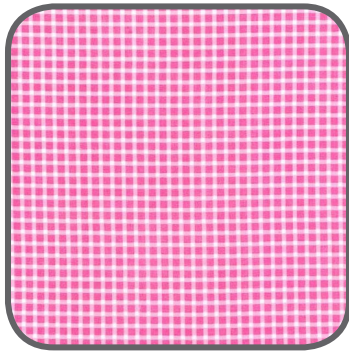
CX5518 Aqua
Kiss Dot
1/8 yard



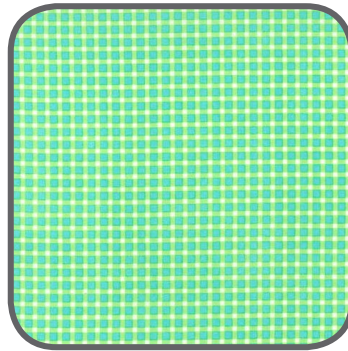
CX5518 Pink
Kiss Dot
1/8 yard



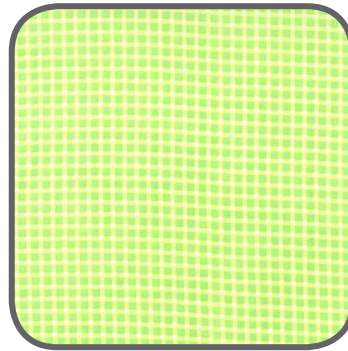
CX5518 Grass
Kiss Dot
1/8 yard



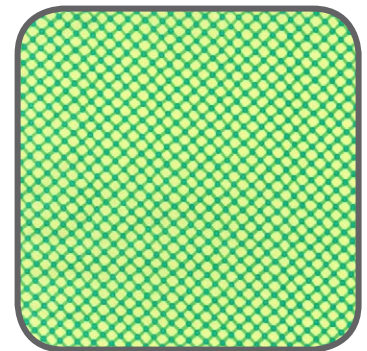
CX5897 Watermelon
Cute Plaid
1/8 yard



CX5897 Lagoon
Cute Plaid
1/8 yard



CX5897 Lime
Cute Plaid
1/8 yard



CX5911 Green
Cora
1 1/3 yards

"Owlery Quilt"
Quilt by Ellen Maxwell

Size: Approximately 42 1/2" x 42 1/2"

Materials

Fabric	Yardage	Cutting
CX6355 Canary Owlery	1 1/4 yard	Fussy cut (24) 6 1/2" x 6 1/2" squares of owls on tree branch. Make sure there is an entire owl in each square.
CX5911 Orange Cora	1/8 yard	* Cut a 3 1/2" strip of each fabric Cut (11) 3 1/2" x 3 1/2" squares
CX5911 Sorbet Cora	1/8 yard	* Cut a 3 1/2" strip of each fabric Cut (11) 3 1/2" x 3 1/2" squares
CX5911 Aqua Cora	1/8 yard	* Cut a 3 1/2" strip of each fabric Cut (7) 3 1/2" x 3 1/2" squares
CX5911 Pink Cora	1/8 yard	* Cut a 3 1/2" strip of each fabric Cut (8) 3 1/2" x 3 1/2" squares
CX3584 Mint Clown Stripe	1/8 yard	* Cut a 3 1/2" strip of each fabric Cut (4) 3 1/2" x 3 1/2" squares
CX3584 Luna Clown Stripe	1/8 yard	* Cut a 3 1/2" strip of each fabric Cut (7) 3 1/2" x 3 1/2" squares
CX5518 Aqua Kiss Dot	1/8 yard	* Cut a 3 1/2" strip of each fabric Cut (9) 3 1/2" x 3 1/2" squares
CX5518 Pink Kiss Dot	1/8 yard	* Cut a 3 1/2" strip of each fabric Cut (11) 3 1/2" x 3 1/2" squares
CX5518 Grass Kiss Dot	1/8 yard	* Cut a 3 1/2" strip of each fabric Cut (9) 3 1/2" x 3 1/2" squares
CX5897 Watermelon Cute Plaid	1/8 yard	* Cut a 3 1/2" strip of each fabric Cut (8) 3 1/2" x 3 1/2" squares
CX5897 Lagoon Cute Plaid	1/8 yard	* Cut a 3 1/2" strip of each fabric Cut (6) 3 1/2" x 3 1/2" squares
CX5897 Lime Cute Plaid	1/8 yard	* Cut a 3 1/2" strip of each fabric Cut (9) 3 1/2" x 3 1/2" squares
CX5911 Green Cora	1 1/3 yards	Cut (5) 2 1/4" x W.O.F. - for French Fold Binding 1 1/3 yards of fabric for backing (one piece)
* This is a total of (100) 3 1/2" x 3 1/2" squares to make 25 - 4 square blocks		

Disclaimers

This pattern is provided as a courtesy to quilt stores, catalogs, and quilters. Michael Miller Fabrics, LLC is not responsible for the accuracy of any kits packaged to accompany this pattern. Please direct any inquiries to the kit maker.

Yardage requirements for this pattern may allow for excess yardage to accommodate specific placement of motifs or to allow for any fussy-cutting to achieve the finished quilt design.

While every attempt has been made to give accurate measurements, yardage requirements, and construction directions; this does not allow personal variations in measuring, cutting, and or sewing. The enclosed directions were used in the construction of the original quilt.

Directions:

1. Sew squares together randomly or follow quilt photograph.
2. Fussy cut (24) 6 1/2" x 6 1/2" squares of owls on a tree branch (1 1/4 yards).

* Be sure there is an entire owl in each square.