

Stuffed Owl Tutorial

Supplies and Fabrics

½ yard Fabric 1

1 Fat ¼ Fabric 2

1 Fat ¼ Fabric 3

Scraps for the eyes (white and one other color)

Fiberfill ([Fairfield Fiberfill](#))

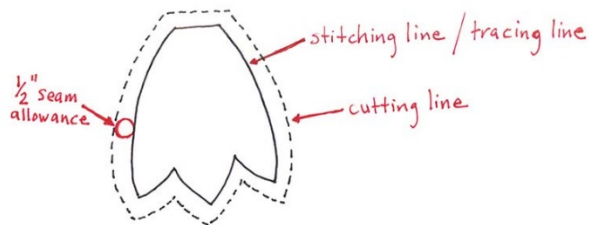
2 buttons

Step One:

Print out the pattern pieces on 8 ½" x 11" paper (make sure that your printer is set to 100% scale). Tape the paper together matching the dashed red lines. Cut out the pattern pieces.

*There is **NO SEAM ALLOWANCE** added to this pattern. After you cut the pattern pieces, use them as a template and trace around the perimeter—these lines will be your stitching lines. Add a ½" seam allowance to all pattern pieces and transfer the placement notches.

Diagram 1



Cutting instructions:

- A- Cut one on fold of Fabric 1 (transfer all markings) for the back panel.
- B- Cut one on fold of Fabric 2 (transfer all markings) for the belly.
- C- Cut two (one right and one left) of Fabric 1 for the wings.
- D- Cut two of Fabric 3 for the beak.
- E- Cut four of Fabric 3 for the feet.
- F- Cut four of Fabric 4 (I used white) for the eyes.
- G- Cut four of Fabric 5 for the eyes.

Step Two:

Stitch the wings (C) to the belly (B). Clip the inner, curved edge of each wing (diagram 2). Pin the wing to the belly with right sides together (diagram 3) and stitch using a $\frac{1}{2}$ " seam allowance. Repeat for the other wing. Press seam allowances towards wings.

Diagram 2

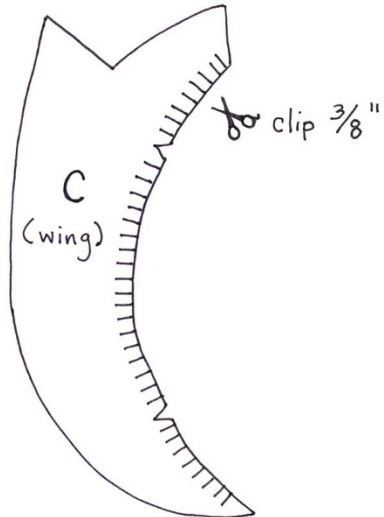
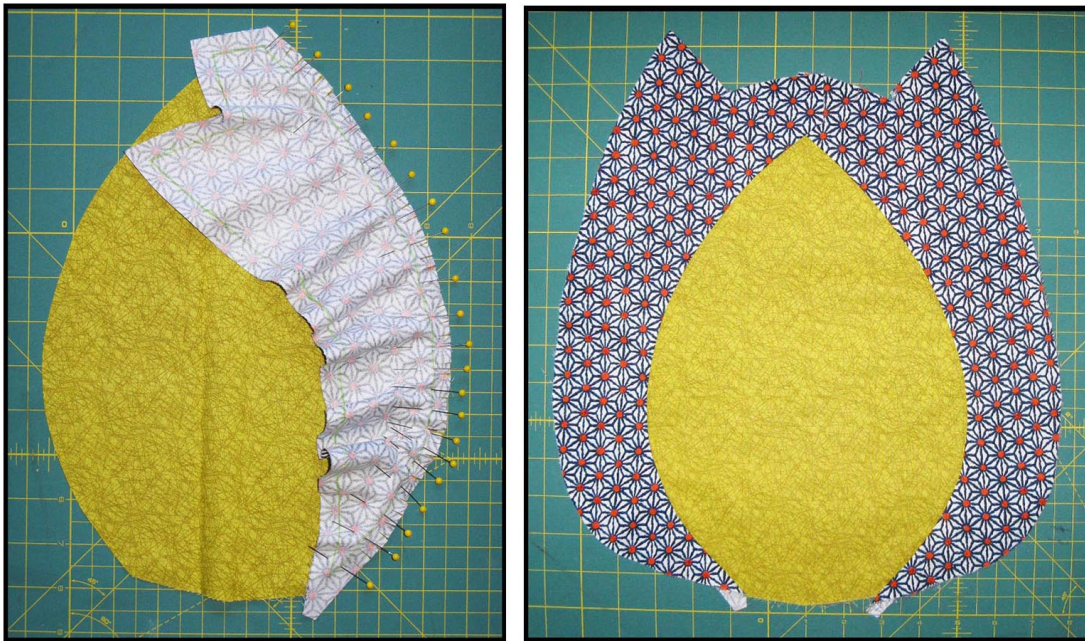


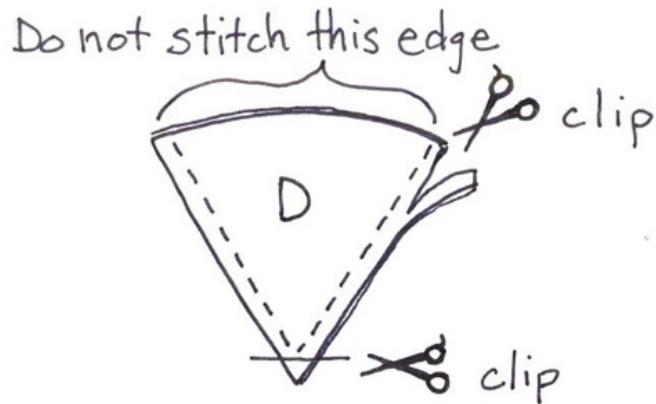
Diagram 3



Step Three:

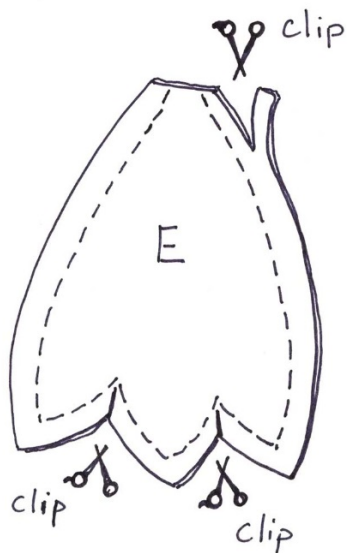
Stitch two beak pieces (D) together on the straight sides with right sides facing. Clip the seam allowance to $\frac{1}{4}$ " and clip the pointed corner. Diagram 4. Turn right sides out and press.

Diagram 4



Stitch two feet pieces (E) together with right sides facing (leaving the top edge open) clip the seam allowance and corners. Turn and press.

Diagram 5



Step Four:

Place the beak over the belly and wings on the right side and pin. Place the feet under the belly on the right side and pin. Baste the beak and feet into place.

Diagram 6



Step Five:

Stitch the eye circles (F) and (G) around the perimeter with right sides together leaving a 1/2" opening. Clip around the edges and turn the circles right side out. Press.

Pin the circles in place and stitch close to the edge. Be sure to back tack at the start and finish of each stitching line.

Diagram 7



Step Six:

Place a button over each eye and stitch in place.

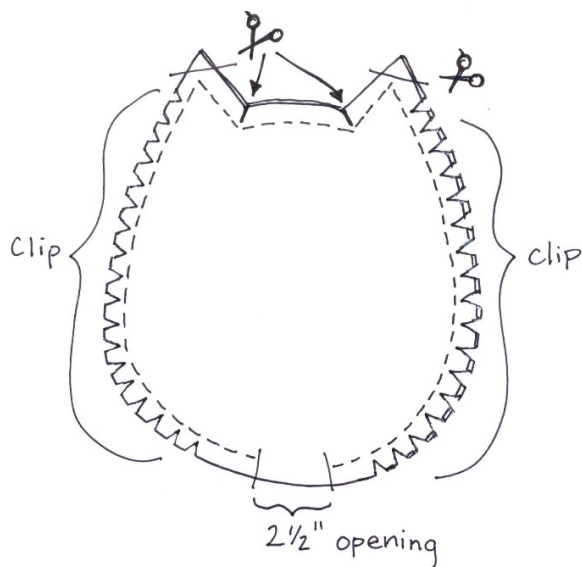
Diagram 8



Step Seven:

Place pattern piece (A) over the panel that you created in steps 2 through 6 with right sides together and pin in place. Make sure that the feet are sandwiched between the two panels. Stitch around the perimeter leaving a 2 1/2" opening at the bottom between the feet. Back tack at the start and finish of your stitching line. Clip the seam allowance and corners. Diagram 9. Turn the right sides out. *Use the wrong end of a round paintbrush or a dull pencil to gently push the ear points out.

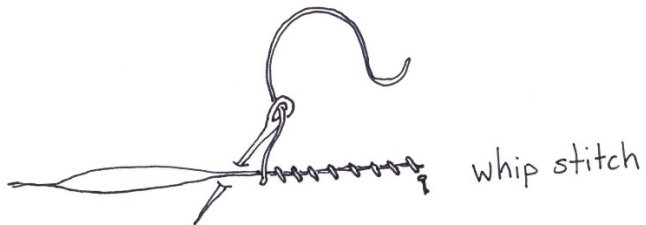
Diagram 9



Step Eight:

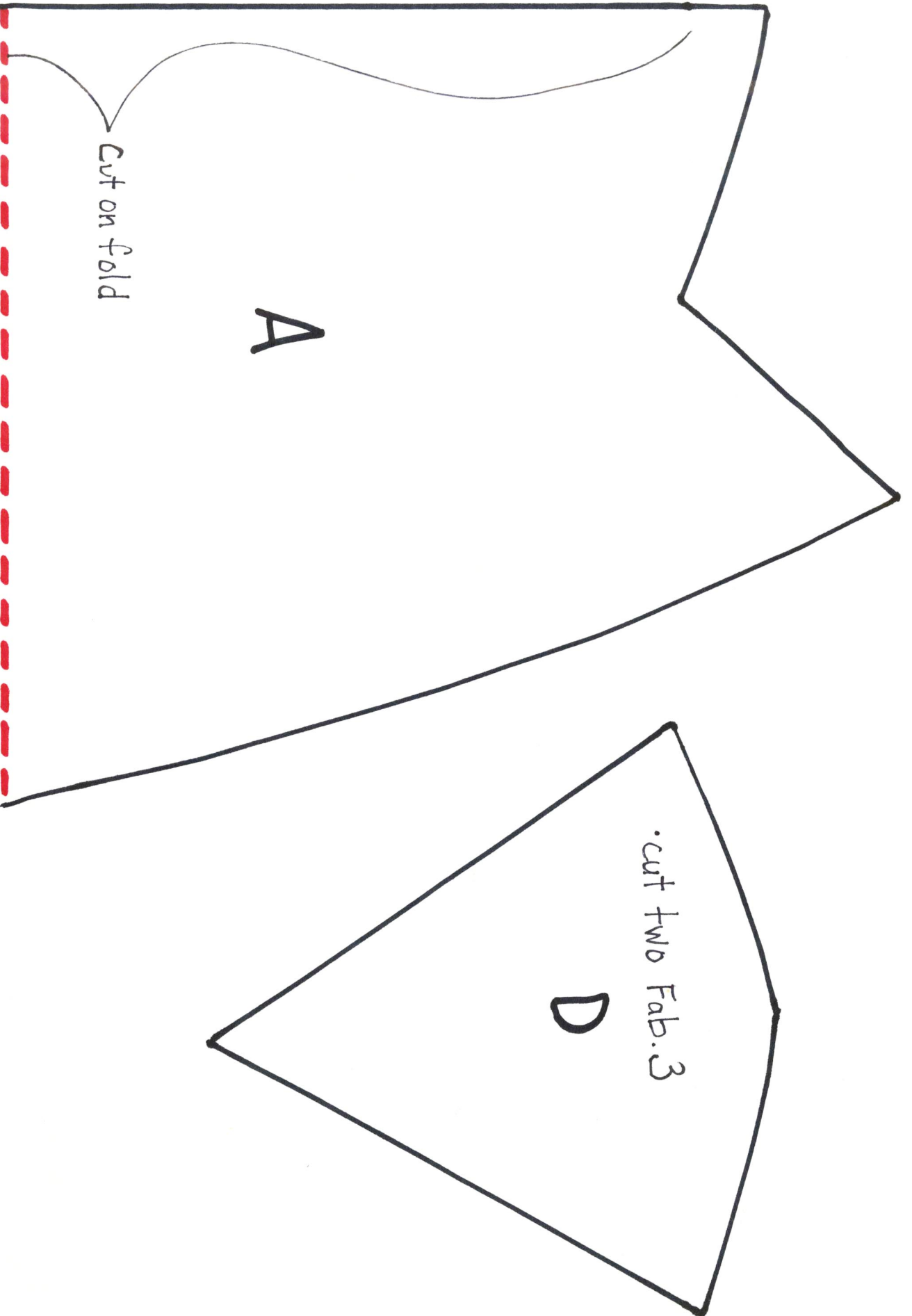
Stuff your owl with Polyfil using the 2 ½" opening made in step 7 (make sure that you push some stuffing into the ears). When satisfied with amount of stuffing, slip stitch the bottom opening.

Diagram 10



And, you're done! Congratulations!





A

Cut on fold

.cut two Fab. 3

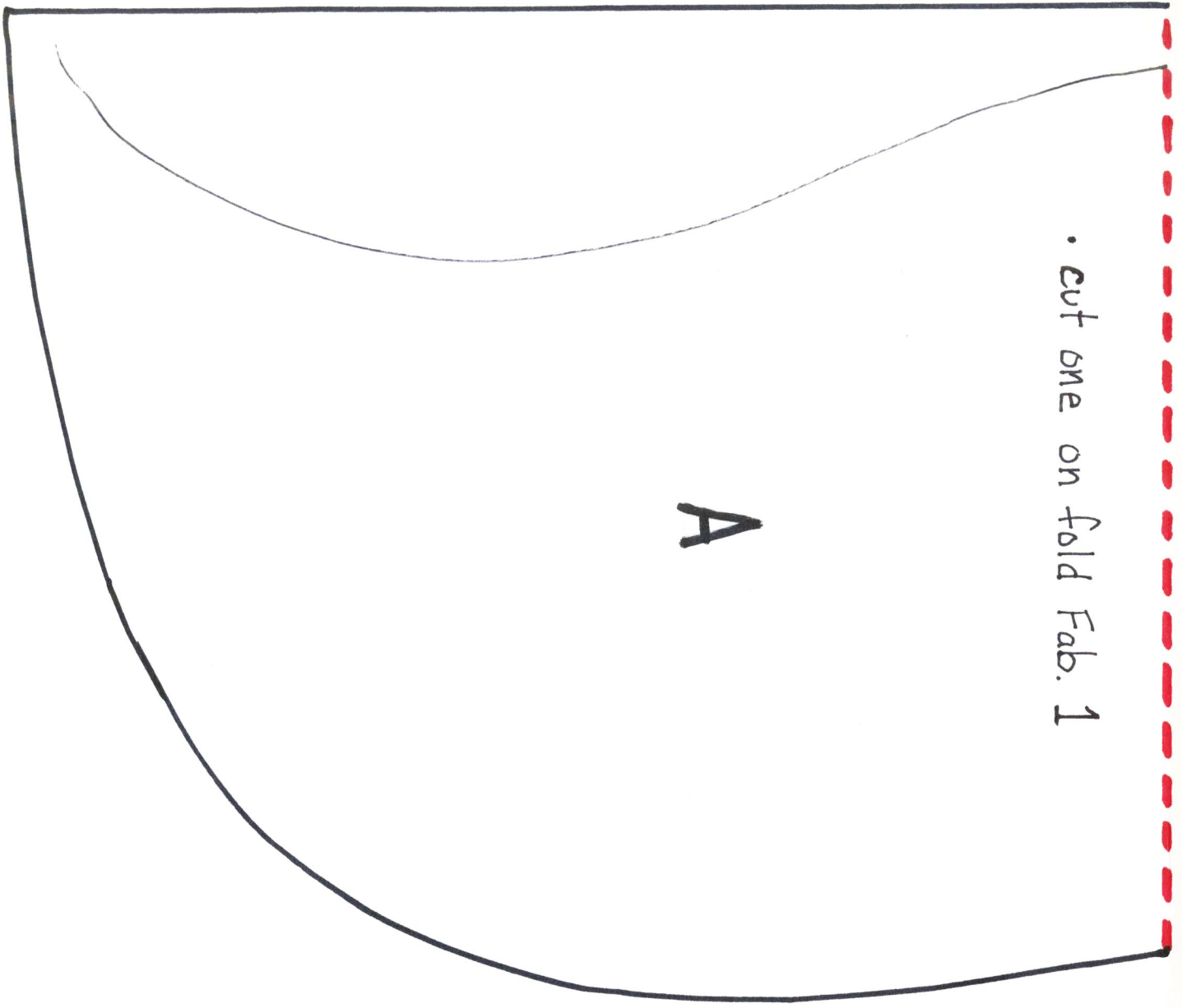
D

CONNECT TO PART A (MATCH DASHED LINE)

CONNECT TO PART A (MATCH DASHED LINES)

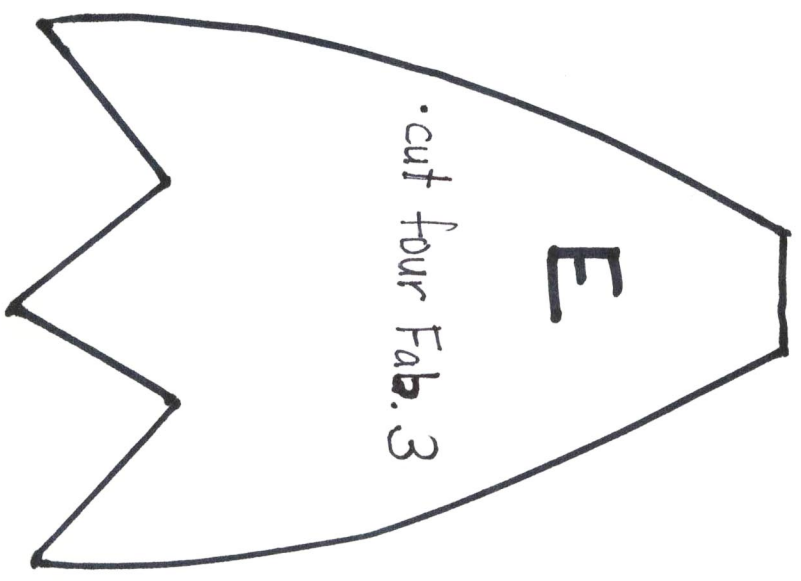
• cut one on fold Fab. 1

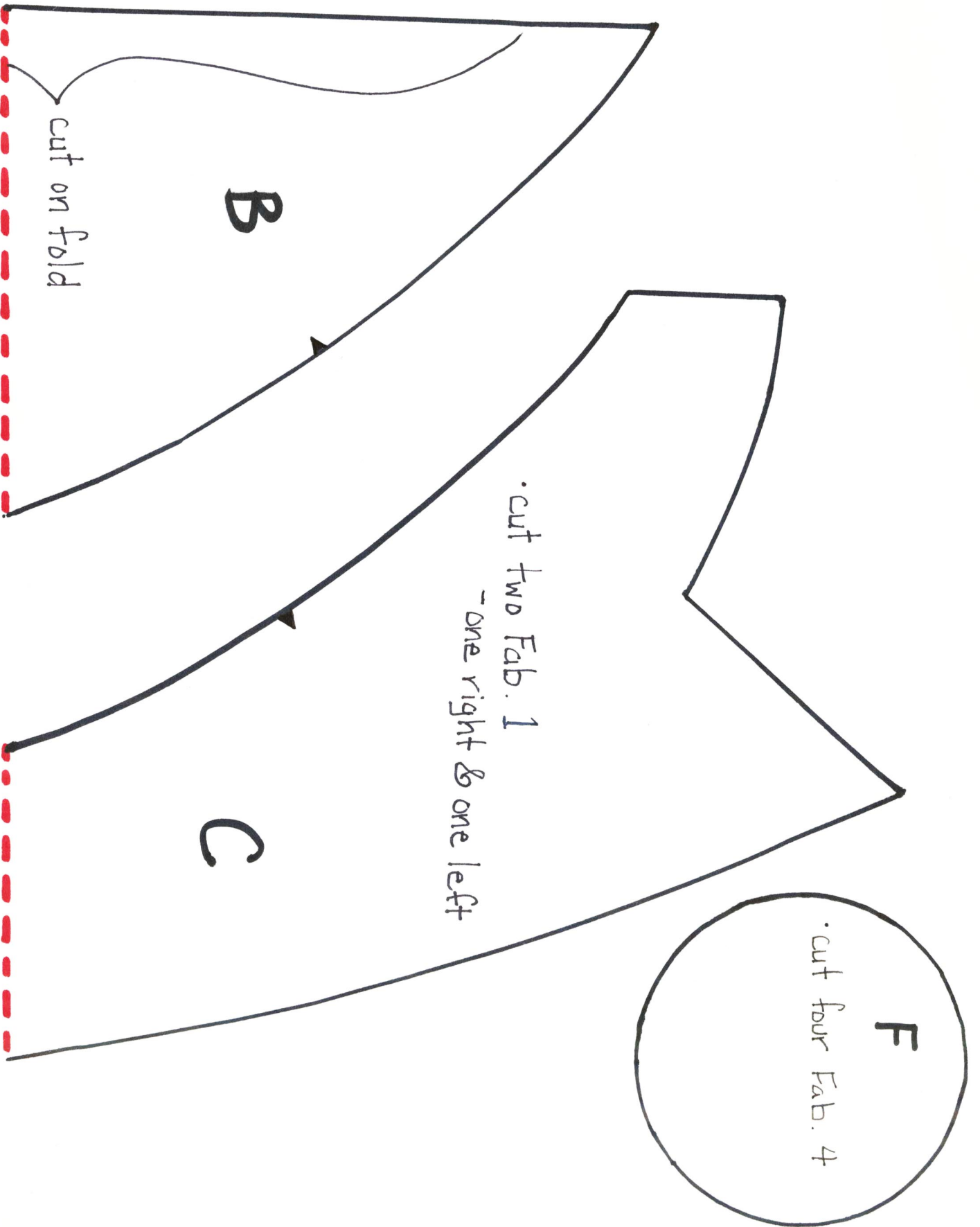
A



• cut four Fab. 3

E





CONNECT TO PAT. B AND PAT. C (MATCH DASHED LINE)

CONNECT TO PATT. B AND PATT. C (MATCH DASHED LINE)

• cut one on fold Fab. 2

B

C

G

• cut four
Fab. 5

