

PARK LANDSCAPE



Quilt designed by Marinda Stewart

Size: 40" W x 55 H"

Level: Confident Beginner



118 West 22nd Street 5th FL. New York, NY 10011 Tel: 212.704.0774 Fax: 212. 633. 0272
 email: info@michaelmillerfabrics.com www.michaelmillerfabrics.com

FABRIC REQUIREMENTS



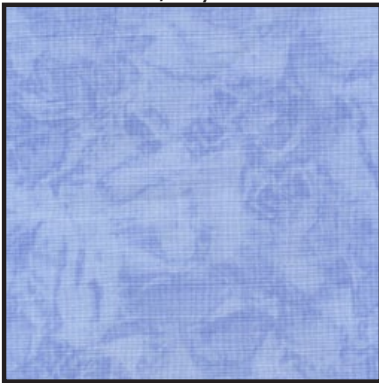
**CJ2135 Green
Park Landscape**
2 3/4 yards



**K1274 (Magenta)
Krystal**
1 yard



**K1175
Krystal**
6" x 7" piece



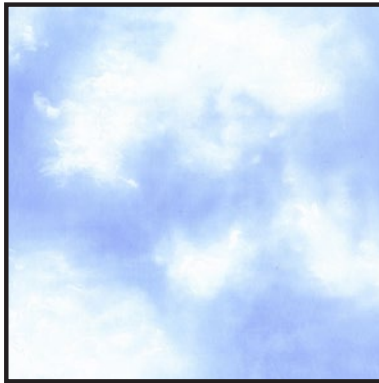
**K1063
Krystal**
6" x 7" piece



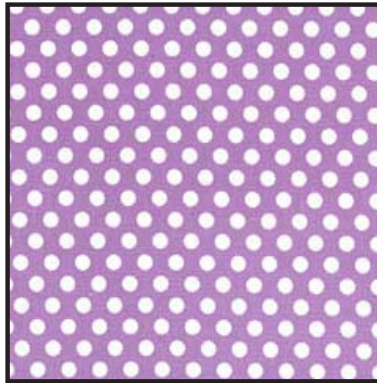
**K4058
Krystal**
6" x 7" piece



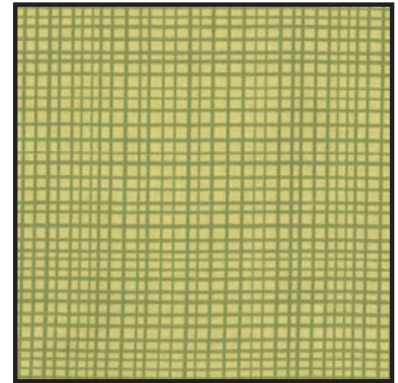
**SC5333 Boy
Cotton Couture**
6" x 7" piece



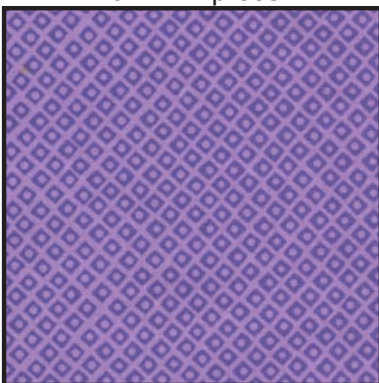
**CX2517 Blue
Clouds**
6" x 7" piece



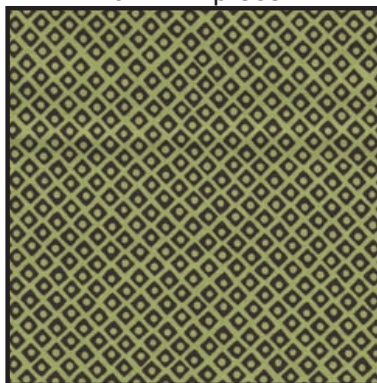
**CX5518 Purple
Kiss Dot**
6" x 7" piece



**CX4840 Lime
Random Pencil Check**
6" x 7" piece



**CX4842 Lavender
Dot 'N' Square**
6" x 7" piece



**CX4842 Starfruit
Dot 'N' Square**
6" x 7" piece

Backing & Batting: 45" x 60"

"Park Landscape"
Quilt by Marinda Stewart

Size: Approximately 40" W x 55" H Skill Level : Confident Beginner

Materials

Fabric	Yardage	Cutting	
CJ2135 Green Park Landscape	2 3/4 yards	(1) 7 1/2" H x 8 1/2" W (1) 11 1/2" H x 8 1/2" W (1) 17 1/2" H x 8 1/2" W (1) 12 1/2" H x 9 1/2" W (1) 24 1/2" H x 15 1/2" W (1) 6 1/2" H x 4 1/2" W (1) 6 1/2" H x 10 1/2" W (1) 8 1/2" H x 15 1/2" W	(1) 12 1/2" H x 9 1/2" W (1) 17 1/2" H x 15 1/2" W (1) 11 1/2" H x 7 1/2" W (1) 5 1/2" H x 13 1/2" W (1) 8 1/2" H x 10 1/2" W (1) 8 1/2" H x 16 1/2" W (1) 8 1/2" H x 9 1/2" W
K1274 (Magenta) Krystal	1 yard	(3) 1 1/2" x 8 1/2" (4) 1 1/2" x 15 1/2" (2) 1 1/2" x 12 1/2" (1) 1 1/2" x 11 1/2" (1) 1 1/2" x 13 1/2" (1) 1 1/2" x 17 1/2"	(1) 1 1/2" x 37 1/2" (1) 1 1/2" x 24 1/2" (1) 1 1/2" x 26 1/2" (1) 1 1/2" x 6 1/2" (1) 1 1/2" x 46 1/2" pieced for length (5) 2 1/2" x W.O.F. - binding
K1175 Krystal	6" x 7" piece	(4) 1 1/2" x 5 1/2" each fabric	
K1063 Krystal	6" x 7" piece		
K4058 Krystal	6" x 7" piece		
SC5333 Boy Cotton Couture	6" x 7" piece		
CX2517 Blue Clouds	6" x 7" piece		
CX5518 Purple Kiss Dot	6" x 7" piece		
CX4840 Lime Random Pencil Check	6" x 7" piece		
CX4842 Lavender Dot 'N' Square	6" x 7" piece		
CX4842 Starfruit Dot 'N' Square	6" x 7" piece		
<p align="center">Also Needed: 45" x 60" backing, 45" x 60" batting, thread to match, scissors, straight pins, rotary cutter, acrylic ruler, and mat.</p>			
<p align="center">* One-way print. Keep rectangles with motif upright</p>			

Disclaimers

This pattern is provided as a courtesy to quilt stores, catalogs, and quilters. Michael Miller Fabrics, LLC is not responsible for the accuracy of any kits packaged to accompany this pattern. Please direct any inquiries to the kit maker.

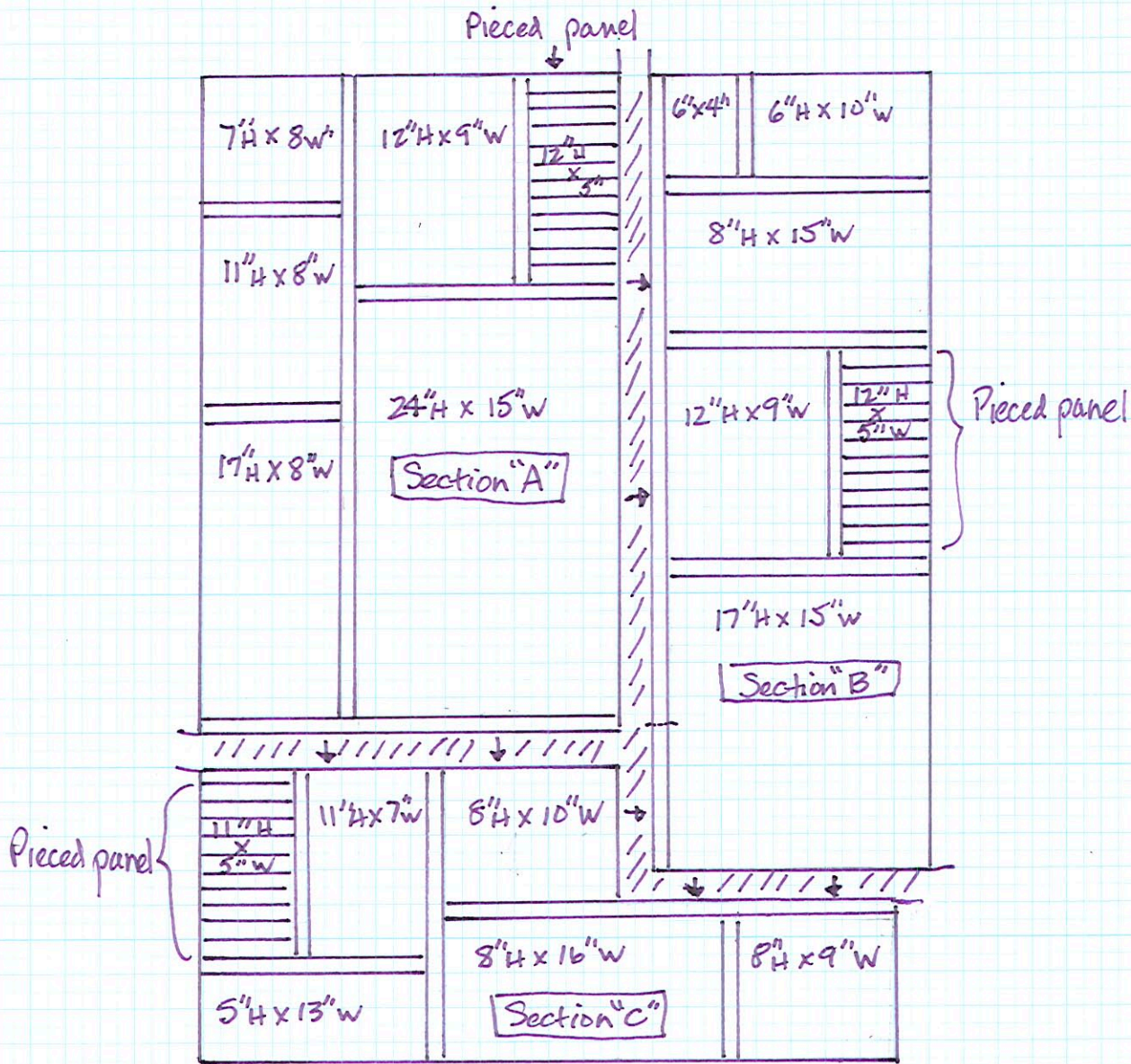
Yardage requirements for this pattern may allow for excess yardage to accommodate specific placement of motifs or to allow for any fussy-cutting to achieve the finished quilt design.

While every attempt has been made to give accurate measurements, yardage requirements, and construction directions; this does not allow personal variations in measuring, cutting, and or sewing. The enclosed directions were used in the construction of the original quilt.

Directions

1. For pieced panels randomly sew (12) 1 1/2" x 5 1/2" strips of fabric together to make a 12 1/2" x 5 1/2" piece. Make (2). Make one panel using (11) 1 1/2" x 5 1/2" pieces. One 1 1/2" x 5 1/2" strip will be leftover. Set aside.
2. Sew one K1274 1 1/2" x 8 1/2" piece to the bottom of one CJ2135 7 1/2" x 8 1/2" wide piece. Sew one CJ2135 11 1/2" H x 8 1/2" to the bottom of the K1274 strip. Sew one K1274 1 1/2" x 8 1/2" strip to the bottom of the CJ2135 11 1/2" piece. Sew one CJ2135 17 1/2" x 8 1/2" to the bottom of the K1274 strip to make one panel 37 1/2" H x 8 1/2" W.. Sew one K1274 1 1/2" x 37 1/2" to the right side of the panel. Set aside.
3. Sew one K1274 1 1/2" x 12 1/2" piece to the right side of one CJ2135 12 1/2" H x 9 1/2" W piece. Sew one 5 1/2" x 12 1/2" pieced panel to the right side of the K1274 strip to make one 12 1/2" x 15 1/2" section. Sew one K1274 1 1/2" x 15 1/2" strip to the bottom of the unit. Sew one CJ2135 24 1/2" x 15 1/2" piece to the bottom edge of the K1274 strip. Sew completed 37 1/2" x 15 1/2" unit to the right side of 37 1/2" x 9 1/2" section to complete section 'A'. Set aside.
4. Sew one K1274 1 1/2" x 6 1/2" piece to the right side of one CJ2135 6 1/2" x 4 1/2" piece. Sew one CJ2135 6 1/2" x 10 1/2" piece to the right side of the K1274 strip. Sew one K1274 1 1/2" x 15 1/2" piece to the bottom of the pieced unit. Add one CJ2135 8 1/2" H x 15 1/2" W to the bottom of the unit. Follow with another K1274 1 1/2" x 15 1/2" strip. Sew one K1274 1 1/2" x 12 1/2" strip to the right side of one CJ2135 12 1/2" H x 9 1/2" H piece. Sew one 5 1/2" x 12 1/2" pieced panel to the right side of the K1274 strip. Join the 12 1/2" x 15 1/2" unit to the bottom edge of the K1274 15 1/2" strip. Sew another K1274 1 1/2" x 15 1/2" strip to the bottom of the unit. Add one CJ2135 17 1/2" H x 15 1/2" W piece to the bottom of the section. Sew one K1274 1 1/2" x 46 1/2" strip to the left side of the completed section 'B'. Set aside.
5. For section 'C' - sew one K1274 1 1/2" x 11 1/2" strip to the right side of one 5 1/2" x 11 1/2" pieced panel. Sew one K1274 1 1/2" x 13 1/2" strip to the bottom of the pieced unit. Sew one CJ2135 5 1/2" x 13 1/2" piece to the bottom edge of the unit. Sew one K1274 1 1/2" x 17 1/2" strip to the right side. Set aside. Sew one K1274 1 1/2" x 8 1/2" strip to the right side of one CJ2135 8 1/2" x 16 1/2" W piece. Sew one CJ2135 8 1/2" H x 9 1/2" W piece to the right side of the K1274 piece. Sew one K1274 1 1/2" x 26 1/2" piece to the top of the unit. Sew one CJ2135 8 1/2" H x 10 1/2" W to the top left side of the unit. Keep the motifs upright. Join this unit to the other along the 17 1/2" edge of K1274 to make section 'C'.
6. To join the sections, align the top edges of section 'A' and 'B' right sides together. Section 'B' will be 8 1/4" longer than 'A'. Sew 37 1/2", leaving the last 8 1/4". Sew section 'C' to the bottom of section 'A' across the 24 1/2". Sew the remaining 8 1/4" of section 'B' to the joined unit. Finally sew the bottom of section 'B' to the remainder of section 'C' to complete the quilt top. Refer to the diagram for joining units.
7. Layer backing, batting, and quilt top. Baste.
8. Quilt as desired, being careful not to catch the dimensional fish fins.
9. Bind using K1274 2 1/2" strips pieced as needed for length.

"Park Landscape" Placement Diagram



Measurements given are finished size after sewing.