

Courtney's Garden



Size: 42" x 54"

Quilt designed by Marinda Stewart
Level: Confident Beginner



118 West 22nd Street 5th Floor New York, NY 10011
Tel: 212.704.0774 Fax: 212. 633. 0272 email: info@michaelmillerfabrics.com

www.michaelmillerfabrics.com

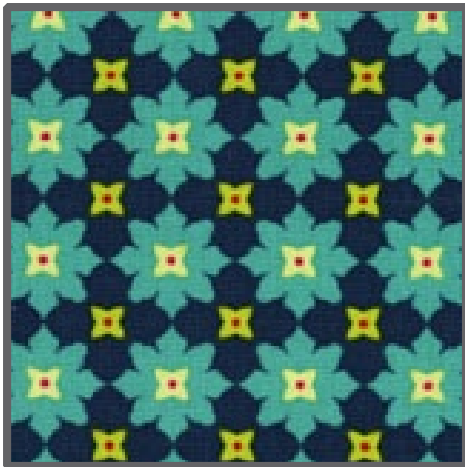
FABRIC REQUIREMENTS



**CX3295 Wave
Lolli Dot
1 1/2 yards**



**CX5480 Aqua
Courtney
1/6 yard**



**DC3897 Navy
Tiny Flowers
1/6 yard**



**DC3904 White
Tiny Dots
1 1/2 yards**



**DC3904 Navy
Tiny Dots
1/4 yard**



**K4151 (Leaf Green)
Krystal
3/8 yard**



**DC5377 Caribbean
Siren Song
3/4 yard**

Backing & Batting 46" x 60"

"Courtney's Garden"
Quilt by Marinda Stewart

Size: Approximately 42" x 54" Skill Level : Beginner

Materials

Fabric	Yardage	Cutting
CX3295 Wave Lolli Dot	1 1/2 yards	(1) 42 1/2" W x 50 1/2" L
CX5480 Aqua Courtney	1/6 yard	Fussy cut (5) flowers 4 1/2" each
DC3897 Navy Tiny Flowers	1/6 yard	(1) 4 1/2" x 40 1/2"
DC3904 White Tiny Dots	1 1/2 yards	(5) 17" squares
DC3904 Navy Tiny Dots	1/4 yard	(5) 8 1/2" squares
K4151 (Leaf Green) Krystal	3/8 yard	(1) 3/4" x 19" (1) 3/4" x 39" (1) 3/4" x 10" (1) 3/4" x 14" (1) 3/4" x 30" (3) Large Leaves (4) Small Leaves
DC5377 Caribbean Siren Song	3/4 yard	2 1/2" x 3/4 yard pcs. pieced with the stripe for binding
<p>Also Needed: 46" x 60" batting, 46" x 60" backing, threads to match, scissors, straight pins, acrylic ruler, rotary cutter, fusible web, and mat. RECOMMENDED:Iron-on tear-away stabilizer</p>		

Disclaimers

This pattern is provided as a courtesy to quilt stores, catalogs, and quilters. Michael Miller Fabrics, LLC is not responsible for the accuracy of any kits packaged to accompany this pattern. Please direct any inquiries to the kit maker.

Yardage requirements for this pattern may allow for excess yardage to accommodate specific placement of motifs or to allow for any fussy-cutting to achieve the finished quilt design.

While every attempt has been made to give accurate measurements, yardage requirements, and construction directions; this does not allow personal variations in measuring, cutting, and or sewing. The enclosed directions were used in the construction of the original quilt.

Directions

1. Following manufacturer's directions, iron fusible web on the wrong side of CX5480 (5) fussy-cut flowers, (5) CX5480 8 1/2" squares, and CX5480 17" squares.
2. Remove paper backing from CX3295 flowers. Iron onto the right side of the DC3904 8 1/2" squares. Center the motif. Machine appliqué the raw edges to finish. Stitch through the paper backing.
3. On the paper side of the 8 1/2" square draw random spiked petals as shown. Cut out. Remove paper backing entirely. Iron onto the center of the DC3904 17" squares as shown. Machine appliqué all raw edges to finish.
4. Repeat step #3 on the 17" squares as shown or as desired.
5. Trace (3) large leaves and (4) small leaves onto the paper side of the fusible web. Rough cut out. Following manufacturer's directions iron fusible web to the wrong side of K4151. Iron fusible web to all (5) 3/4" strips - 10", 14", 19", 30", 39". Remove paper backing. Iron the stems onto the CX3295 42 1/2" x 50 1/2" piece. Align all stems at the bottom edge. Iron leaves in place as shown or as desired. Machine appliqué all raw edges to finish. Add veins to each leaf as shown. NOTE: Iron iron-on tear-away stabilizer on the back of CX3295 before stitching. The stabilizer improves stitch quality and eliminates fabric distortion. Once all stitching is complete, remove all traces of the stabilizer.
6. Add flowers to the top of each stem. Two flowers will extend beyond the background fabric. Trim off any excess even with the background. Machine appliqué all raw edges to finish.
7. Sew DC3897 4 1/2" x 40 1/2" piece to the bottom of the quilt.
8. Layer backing, batting, and quilt top. Baste.
9. Quilt as desired.
10. Bind quilt using DC5377 2 1/2" strips cut vertically. Piece together along the stripes to get the necessary length for the quilt.

"Courtneys Garden"

PATTERNS

cut(3)

cut(4)

* Note: reverse the
direction of the leaves
for several of them.

11/1