

# WOODEN HORSES

Date: Dec.24.11



Size: 41 1/2" x 51 1/2"

Quilt designed by **Marinda Stewart**  
Level: **Beginner**



118 West 22nd Street 5th Floor New York, NY 10011  
Tel: 212.704.0774 Fax: 212. 633. 0272 email: [info@michaelmillerfabrics.com](mailto:info@michaelmillerfabrics.com)

[www.michaelmillerfabrics.com](http://www.michaelmillerfabrics.com)

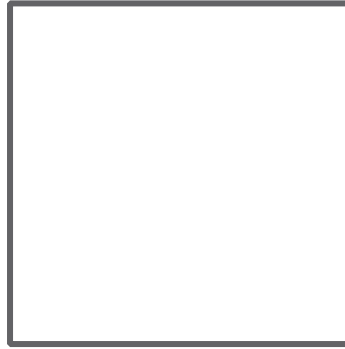
# FABRIC REQUIREMENTS



**CX5249 Royal  
Wooden Horses**  
3/4 yard



**CX5248 Red  
Wood Cuts**  
3/4 yard



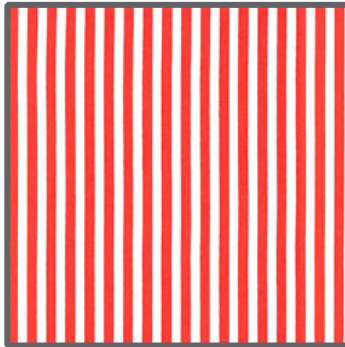
**SC5333 Bright White  
Cotton Couture**  
5/8 yard



**SC5333 Royal  
Cotton Couture**  
3/8 yard



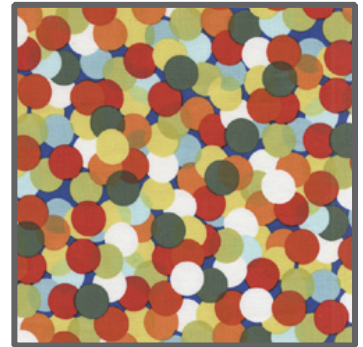
**SC5333 Kryptonite  
Cotton Couture**  
1/6 yard



**CX3584 Fire  
Clown Stripe**  
1/6 yard



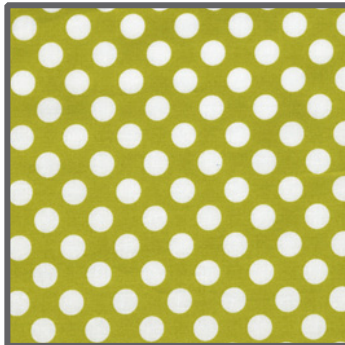
**K1160 (Aqua)  
Krystal**  
1/4 yard



**CX1400 Multi  
Spotlight**  
Fat 1/4



**CX5459 Orange  
Swirly Gig**  
Fat 1/4



**CX1492 Celery  
Ta Dot**  
1/8 yard



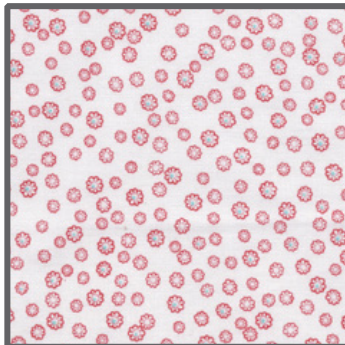
**CX5458 Green  
Holly Folly**  
1/8 yard



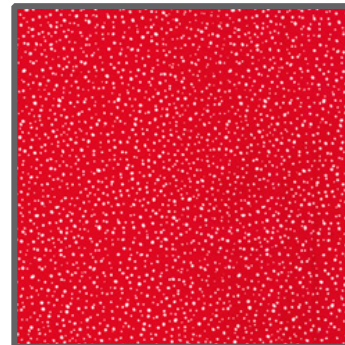
**CX5458 Red  
Holly Folly**  
1/8 yard



**CX5458 Orange  
Holly Folly**  
1/8 yard



**CX4833 Red  
Mini Fleur**  
1/8 yard



**CX4846 Red  
Spatter Dots**  
1/8 yard

**Backing & Batting 38" x 50"**

## "Wooden Horses"

Quilt by Marinda Stewart

Size: Approximately 41 1/2" x 51 1/2" Skill Level : Beginner

### Materials

Fabric	Yardage	Cutting
CX5249 Royal Wooden Horses	3/4 yard	Fussy cut (8) 4 1/2" H x 8 1/2" W * (4 blue/white & 4 red/green)
CX5248 Red Wood Cuts	3/4 yard	Fussy cut (8) 4 1/2" H x 8 1/2" W *
SC5333 Bright White Cotton Couture	5/8 yard	(36) 2 1/2" x 8 1/2"
SC5333 Royal Cotton Couture	3/8 yard	(5) 2 1/2" x W.O.F. - binding
SC5333 Kryptonite Cotton Couture	1/6 yard	(1) 2 1/2" x 50 1/2" **
CX3584 Fire Clown Stripe	1/6 yard	(1) 2 1/2" x 50 1/2" **
K1160 (Aqua) Krystal	1/4 yard	(1) 2 1/2" x 50 1/2" ** (4) 1 1/2" x 8 1/2" (12) 1 1/2" x 4 1/2"
CX1400 Multi Spotlight	Fat 1/4	(12) 1 1/2" x 4 1/2" (4) 1 1/2" x 8 1/2"
CX5459 Orange Swirly Gig	Fat 1/4	(12) 1 1/2" x 4 1/2" (4) 1 1/2" x 8 1/2"
CX1492 Celery Ta Dot	1/8 yard	(12) 1 1/2" x 4 1/2"
CX5458 Green Holly Folly	1/8 yard	(4) 1 1/2" x 8 1/2"
CX5458 Red Holly Folly	1/8 yard	(12) 1 1/2" x 4 1/2"
CX5458 Orange Holly Folly	1/8 yard	(12) 1 1/2" x 4 1/2"
CX4833 Red Mini Fleur	1/8 yard	(12) 1 1/2" x 4 1/2"
CX4846 Red Spatter Dots	1/8 yard	(12) 1 1/2" x 4 1/2"

\* Center on motif

\*\* Pieced for length

#### Also Needed:

38" x 50" backing, 38" x 50" batting, threads to match, scissors, straight pins, acrylic ruler, rotary cutter, and mat.

## Disclaimers

This pattern is provided as a courtesy to quilt stores, catalogs, and quilters. Michael Miller Fabrics, LLC is not responsible for the accuracy of any kits packaged to accompany this pattern. Please direct any inquiries to the kit maker.

Yardage requirements for this pattern may allow for excess yardage to accommodate specific placement of motifs or to allow for any fussy-cutting to achieve the finished quilt design.

While every attempt has been made to give accurate measurements, yardage requirements, and construction directions; this does not allow personal variations in measuring, cutting, and or sewing. The enclosed directions were used in the construction of the original quilt.

## Directions

1. Piece together one each 1 1/2" x 8 1/2" CX5459, CX1400, K1160, and CX5458 Green. Make (4) 4 1/2" x 8 1/2" blocks. Set aside.
2. Piece together one each 1 1/4" x 4 1/2" CX5458 Orange, CX4833, CX1492, K1160, CX4846, CX5458 Red, CX1400, and CX5459 to make one 4 1/2" x 8 1/2" block. Make (12) total.
3. Each row is pieced vertically.  
Row 1 - begin and end with a white 2 1/2" x 8 1/2" piece. Alternate blocks with white for the entire 50 1/2" length. Block order is horse, eight-stripe, wood cut, 4-stripe, wood cut, 8-stripe, horse, 8-stripe.  
Row 2 - block order is 8-stripe, wood cut, 8-stripe, horse, 8-stripe, wood cut, 4-stripe, horse.  
Row 3 - horse, 4-stripe, wood cut, 8-stripe, horse, 8-stripe, wood cut, 8-stripe.  
Row 4 - 8-stripe, horse, 8-stripe, wood cut, 4-stripe, wood cut, 8-stripe, horse.
4. Sew SC5333 Kryptonite 2 1/2" x 50 1/2" piece (pieced for length) between Rows 1 and 2. Sew CX3584 2 1/2" x 50 1/2" (pieced for length along the stripes) between Rows 2 and 3. Sew K1160 2 1/2" x 50 1/2" (pieced for length) between Rows 3 & 4 to make 38 1/2" x 50 1/2" top.
5. Layer backing, batting, and quilt top. Baste.
6. Quilt as desired.
7. Bind quilt using SC5333 Royal 2 1/2" strips pieced as needed for length.