

Sweet Pony



Size: Approximately 52" W x 52" H

Quilt designed by Marinda Stewart
Skill Level : Beginner



118 West 22nd Street 5th Floor New York, NY 10011
Tel: 212.704.0774 Fax: 212. 633. 0272 email: info@michaelmillerfabrics.com

www.michaelmillerfabrics.com

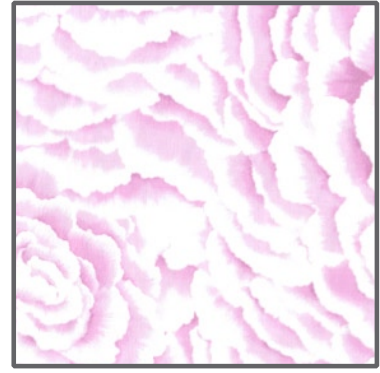
FABRIC REQUIREMENTS



**CX4944 Multi
Sweet Pony
1/6 yard**



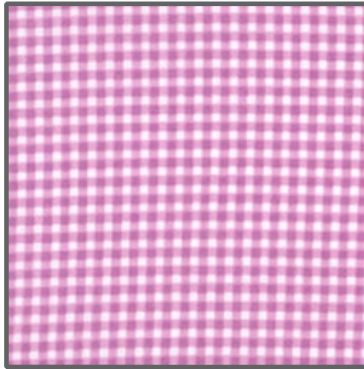
**CX4947 White
Sweet Horsey
1/6 yard**



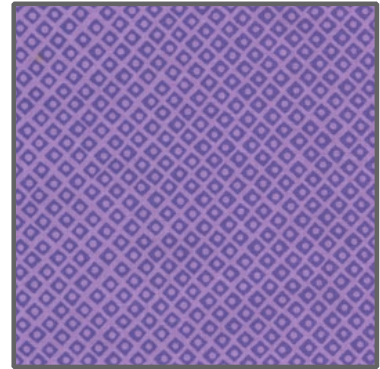
**CX4350 Candy
Petals
1/6 yard**



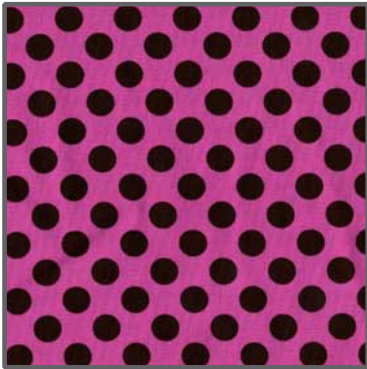
**CX4945 Pink
Sweet Bandana
1/6 yard**



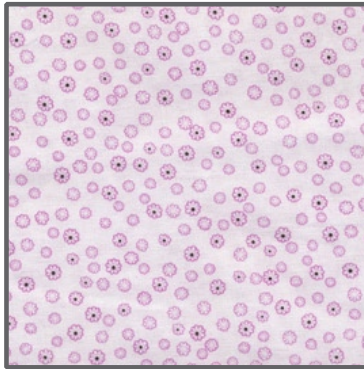
**CX4834 Lavender
Tiny Gingham
1/6 yard**



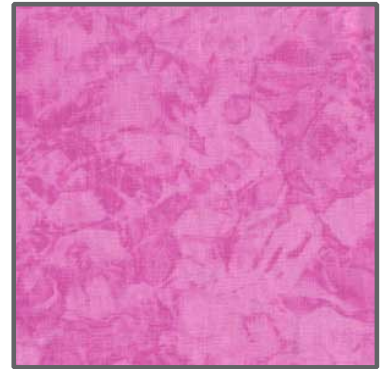
**CX4842 Lavender
Dot 'N' Square
1/6 yard**



**CX1492 Orchid
Ta Dot
1/4 yard**



**CX4833 Orchid
Mini Fleur
3/8 yard**



**K4133
Krystal
1/2 yard**



**CX2490 Brown
Dumb Dot
1/4 yard**



**CX4946 Multi
Sweet Guitars
3/4 yard**



**Jet Brown
3/8 yard**

Backing & Batting 60" x 60"

"Sweet Pony"

Quilt by Marinda Stewart

Size: Approximately 52"W x 52"H Skill Level: Beginner

Materials

Fabric	Yardage	Cutting
CX4944 Multi Sweet Pony	1/6 yard	(9) 4 1/2" squares
CX4947 White Sweet Horsey	1/6 yard	(9) 4 1/2" squares
CX4350 Candy Petals	1/6 yard	(9) 4 1/2" squares
CX4945 Pink Sweet Bandana	1/6 yard	(9) 4 1/2" squares
CX4834 Lavender Tiny Gingham	1/6 yard	(9) 4 1/2" squares
CX4842 Lavender Dot 'N' Square	1/6 yard	(9) 4 1/2" squares
CX1492 Orchid Ta Dot	1/4 yard	(9) 4 1/2" squares, (4) hearts
CX4833 Orchid Mini Fleur	3/8 yard	(9) 4 1/2" squares, (4) 5 3/4" squares
K4133 Krystal	1/2 yard	(9) 4 1/2" squares, (2) 1 1/2" x 38 1/2", (2) 1 1/2" x 40 1/2"
CX2490 Brown Dumb Dot	1/4 yard	(2) 1 1/2" x 36 1/2", (2) 1 1/2" x 38 1/2"
*CX4946 Multi Sweet Guitars	3/4 yard	(4) 5 3/4" x 40 1/2"
Jet Brown	3/8 yard	(5) 2 1/2" x W.O.F. - Binding

* One way print. Purchase enough to get four complete repeats.

Also Needed:

60" x 60" backing & batting, threads to match, scissors, straight pins, fusible web, acrylic ruler, rotary cutter, and mat.

Disclaimers

This pattern is provided as a courtesy to quilt stores, catalogs, and quilters. Michael Miller Fabrics, LLC is not responsible for the accuracy of any kits packaged to accompany this pattern. Please direct any inquiries to the kit maker.

Yardage requirements for this pattern may allow for excess yardage to accommodate specific placement of motifs or to allow for any fussy-cutting to achieve the finished quilt design.

While every attempt has been made to give accurate measurements, yardage requirements, and construction directions; this does not allow personal variations in measuring, cutting, and or sewing. The enclosed directions were used in the construction of the original quilt.

Directions

1. Using one 4 1/2" square of CX4944, CX4947, CX4350, CX4945, CX4834, CX4842, CX1492, CX4833, and K4133 sew together randomly into one row. Repeat making (9) rows total using each of the fabrics randomly in each row. If desired, refer to photo for exact placement.
2. Sew (9) 9-block rows together to make 36 1/2" squares.
3. Sew one CX2490 1 1/2" x 36 1/2" piece to the top and bottom of the quilt. Sew one CX2490 1 1/2" x 38 1/2" piece to each side.
4. Sew one K4133 1 1/2" x 38 1/2" piece to the the top and bottom of the quilt. Sew one K4133 1 1/2" x 40 1/2" piece to each side.
5. Trace four hearts onto the paper side of the fusible web. Following manufacturer's directions iron onto the back of CX1492. Cut out. Iron onto the right side of each CX4833 5 3/4" square. Center each motif. Machine satin stitch around all raw edges to finish.
6. Sew one CX4946 5 3/4" x 40 1/2" piece to the top and bottom of the quilt. Sew one 5 3/4" square to the top and bottom of each remaining CX4946 piece. Keep hearts upright. Sew one strip to each side of the quilt.
7. Layer backing, batting, and quilt top. Baste.
8. Quilt as desired.
9. Using Jet Brown, bind quilt using 2 1/2" strips pieced as needed for length.

"Sweet Pony" PATTERN



*Marinda © 2011