

SORBET PEONY



Size: Approximately 40" W x 56" H

Quilt designed by **Marinda Stewart**

Skill Level : Beginner



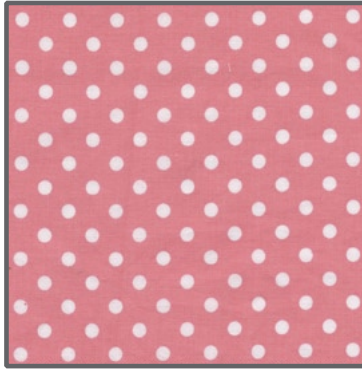
118 West 22nd Street 5th Floor New York, NY 10011
Tel: 212.704.0774 Fax: 212. 633. 0272 email: info@michaelmillerfabrics.com

www.michaelmillerfabrics.com

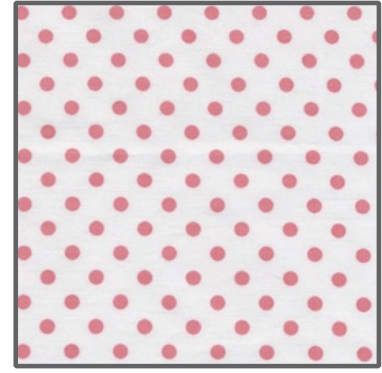
FABRIC REQUIREMENTS



**CX4279 Sorbet
Pretty Peony
1 5/8 yards**



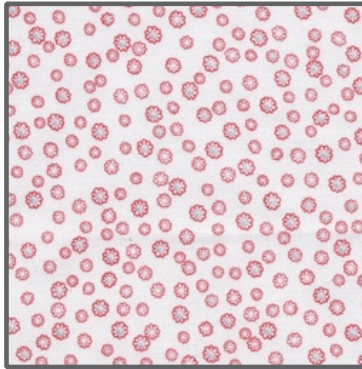
**CX2490 Petal
Dumb Dot
3/4 yard**



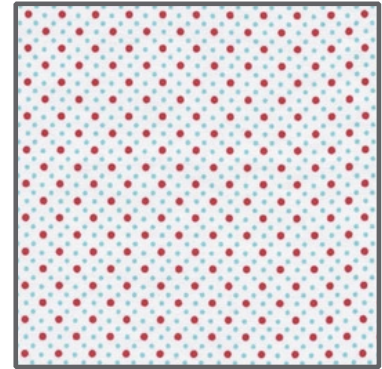
**CX2490 Blush
Dumb Dot
Fat 1/4**



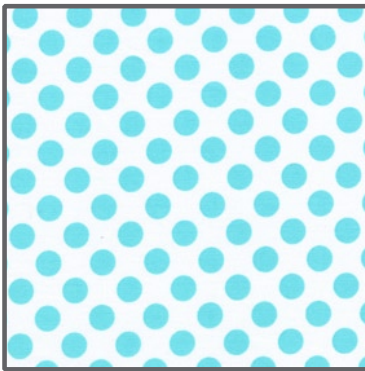
**CX3982 Aqua
Spa Ikat
Fat 1/4**



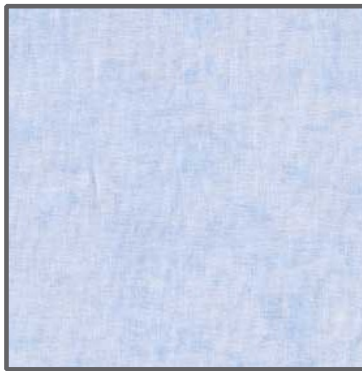
**CX4833 Red
Mini Fleur
Fat 1/4**



**CX4847 Red
Dot Duo
Fat 1/4**



**CX1492 Aqua
Ta Dot
Fat 1/4**



**K4061 Krystal
(Pale Aqua)
Fat 1/4**



**K1053 Krystal
(Green)
10" x 12" PC**



**K4055 Krystal
(Green)
10" x 12" PC**



**K2053 Krystal
(Green)
10" x 12" PC**

Backing & Batting 45" x 60"

"Sorbet Peony"

Quilt by Marinda Stewart

Size: Approximately 40"W x 56"H Skill Level: Beginner

Materials

Fabric	Yardage	Cutting
CX4279 Sorbet Pretty Peony	1 5/8 yards	(3) 8 1/2" W x 56 1/2" H *
CX2490 Petal Dumb Dot	3/4 yard	(4) 1 1/2" x 56 1/2" ** (5) 2 1/2" x W.O.F.
CX2490 Blush Dumb Dot	Fat 1/4	(4) each 3" x 6 1/2" 2 1/2" x 6 1/2" 2" x 6 1/2" (There will be extras)
CX3982 Aqua Spa Ikat	Fat 1/4	
CX4833 Red Mini Fleur	Fat 1/4	
CX4847 Red Dot Duo	Fat 1/4	
CX1492 Aqua Ta Dot	Fat 1/4	
K4061 Krystal (Pale Aqua)	Fat 1/4	
K1053 Krystal (Green)	10" x 12" PC	(10) Leaves
K4055 Krystal (Green)	10" x 12" PC	(10) Leaves
K2053 Krystal (Green)	10" x 12" PC	(12) Leaves
* Cut lengthwise to prevent piecing ** Pieced for length.		
Also Needed: 45" x 60" backing & batting, threads to match, scissors, straight pins, fusible web, acrylic ruler, rotary cutter, and mat.		

Disclaimers

This pattern is provided as a courtesy to quilt stores, catalogs, and quilters. Michael Miller Fabrics, LLC is not responsible for the accuracy of any kits packaged to accompany this pattern. Please direct any inquiries to the kit maker.

Yardage requirements for this pattern may allow for excess yardage to accommodate specific placement of motifs or to allow for any fussy-cutting to achieve the finished quilt design.

While every attempt has been made to give accurate measurements, yardage requirements, and construction directions; this does not allow personal variations in measuring, cutting, and or sewing. The enclosed directions were used in the construction of the original quilt.

Directions

1. Randomly piece the CX2490 Blush, CX3982, CX4833, CX4847, CX1492, K4061 6 1/2" pieces into (2) pieced strips 6 1/2" x 56 1/2".
2. Sew one CX2490 Petal 1 1/2" x 56 1/2" strips to each side of each pieced strip.
3. Using the leaf pattern trace (10) leaves onto the paper side of the fusible web. Following manufacturer's instructions iron onto the wrong side of K1053. Repeat for K4055. Trace (12) leaves and repeat for K2053. Cut out all leaves. Remove paper backing. Arrange on each pieced strip as shown or as desired. (16) leaves go on each strip. Machine satin stitch all raw edges to finish. (NOTE: A decorative machine embroidery stitch was used.)
4. Sew pieced and appliqued strips together alternating with CX4279 56 1/2" strips. Begin and end with CX4279 as shown to make a 40 1/2" x 56 1/2" piece.
5. Layer backing, batting, and quilt top. Baste.
6. Quilt as desired.
7. Bind quilt with CX2490 Petal 2 1/2" strips pieced as needed for length.

- Leaf template -

