

FABRIC REQUIREMENTS

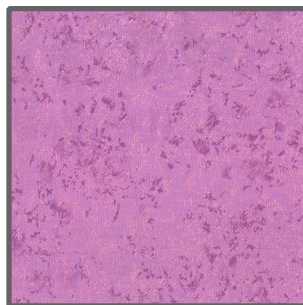
Filigree Flutter[®]



**CX3406 Multi
Filigree Flutter**
1 5/8 yard



**CX4350 Black
Petals**
1/2 yard



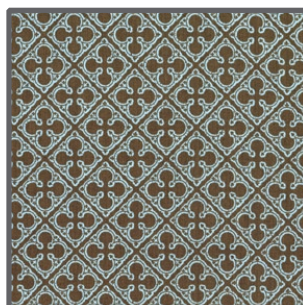
**CM0376 Azalea
Fairy Frost**
3/8 yard



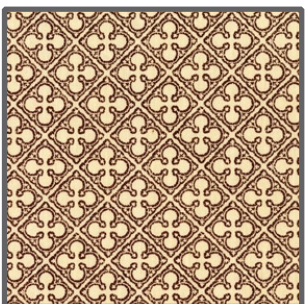
**CM0376 Ribbon
Fairy Frost**
3/8 yard



**CX4595 Black
Zelda**
3/8 yard



**CX4528 Wave
Quatrefoils**
3/8 yards



**CX4528 Candlelight
Quatrefoils**
1/4 yards



**CX4350 Candy
Petals**
1/8 yard



**CX4350 Aqua
Petals**
1/8 yard



Size: Approximately 40"W x 55"H

Quilt designed by Marinda Stewart
Skill Level : Beginner



Backing and Batting : 45" x 60"

118 West 22nd Street 5th Floor New York, NY 10011
Tel: 212.704.0774 Fax: 212. 633. 0272 email: info@michaelmillerfabrics.com

www.michaelmillerfabrics.com

"Filigree Flutter"

Quilt by Marinda Stewart

Size: Approximately 40"W x 55"H - Skill Level: Beginner

Materials

Fabric	Yardage	Cutting
* CX3406 Multi Filigree Flutter	1 5/8 yards	(2) 6 1/2" W x 55 1/2" H cut length-wise (2) 28 1/2" W x 6 1/2" H cut crosswise ** (9) fussy-cut 4 1/2" squares
CX4350 Black Petals	1/2 yard	(5) 2 1/2" x W.O.F. - binding (2) 1" x 25 1/2" (2) 1" x 41 1/2"
CM0376 Azalea Fairy Frost	3/8 yard	(40) 1" x 4 1/2" (40) 1" x 5 1/2"
CM0376 Ribbon Fairy Frost	3/8 yard	(40) 1" x 4 1/2" (40) 1" x 5 1/2"
CX4595 Black Zelda	3/8 yard	(32) 1 1/2" x 2 1/2" (32) 1 1/2" x 4 1/2"
CX4528 Wave Quatrefoils	3/8 yard	(30) 1 1/2" x 2 1/2" (30) 1 1/2" x 4 1/2"
CX4528 Candlelight Quatrefoils	1/4 yard	(2) 1 1/2" x 41 1/2" (2) 1 1/2" x 28 1/2"
CX4350 Candy Petals	1/8 yard	(15) 2 1/2" squares
CX4350 Aqua Petals	1/8 yard	(16) 2 1/2" squares
* One-way print ** Center on the motif		
Also Needed : 45" x 60" backing, 45" x 60" batting, thread to match, scissors, straight pins, rotary cutter, acrylic ruler, and mat.		

Disclaimers

This pattern is provided as a courtesy to quilt stores, catalogs, and quilters. Michael Miller Fabrics, LLC is not responsible for the accuracy of any kits packaged to accompany this pattern. Please direct any inquiries to the kit maker.

Yardage requirements for this pattern may allow for excess yardage to accommodate specific placement of motifs or to allow for any fussy-cutting to achieve the finished quilt design.

While every attempt has been made to give accurate measurements, yardage requirements, and construction directions; this does not allow personal variations in measuring, cutting, and or sewing. The enclosed directions were used in the construction of the original quilt.

Directions

1. For Block 'A' - sew one CX4595 2 1/2" piece to the top and bottom of one CX4350 Aqua 2 1/2" square. Sew one CX4595 4 1/2" piece to each side. Sew one CM0376 Azalea 4 1/2" piece to the top and bottom of the block. Sew one CM0376 Azalea 5 1/2" piece to each side. Make (16) total. Set aside.
2. For Block 'B' - Sew one CX4528 Wave 2 1/2" piece to the top and bottom of one CX4350 Candy 2 1/2" square. Sew one CX4528 Wave 4 1/2" piece to each side. Sew one CM0376 Ribbon 4 1/2" piece to the top and bottom of the block. Sew one CM0376 Ribbon 5 1/2" piece to each side. Make (15) total. Set aside.
3. For fussy cut butterfly blocks - sew one CM0376 Azalea 4 1/2" piece to the top and bottom of (4) CX3406 4 1/2" squares. Sew one CM0376 Azalea 5 1/2" piece to each side. Repeat this process using CM0376 Ribbon with the remaining (5) CX3406 4 1/2" squares. Make nine blocks total - (4) Azaleas, (5) Ribbon.
4. To assemble quilt top - refer to photo for placement of butterfly blocks. Alternate Azalea and Ribbon blocks with each row to maintain checkerboard pattern. Row 1 - (2) Azalea, (2) Ribbon, 1 Butterfly. Row 2 - (2) Azalea, (1) Ribbon, (2) Butterflies. Row 3 - (1) Azalea, (3) Ribbon, (1) Butterfly. Row 4 - (2) Azalea, (2) Ribbon, (1) Butterfly. Row 5 - (2) Azalea, (2) Ribbon, (1) Butterfly. Row 6 - (3) Azalea, (1) Ribbon, (1) Butterfly. Row 7 - (2) Azalea, (2) Ribbon, (1) Butterfly. Row 8 - (2) Azalea, (2) Ribbon, (1) Butterfly.

5. Sew rows together in sequence 1 to 8 to make quilt top 25 1/2" w X 40 1/2" h.
6. Sew CX4350 Black 25 1/2" strip to the top and bottom of the quilt. Sew CX4350 Black 41 1/2" strip to each side.
7. Sew one CX4528 Candlelight 41 1/2" strip to each side of the quilt. Sew one CX4528 Candlelight 28 1/2" strip to the top and bottom of the quilt.
8. Sew one CX3406 28 1/2" strip to the top and bottom of the quilt. Sew one CX3406 55 1/2" to each side. Keep motifs upright on all pieces.
9. Layer backing, batting, and quilt top. Baste.
10. Quilt as desired.
11. Using CX4350 Black, bind quilt piecing as needed for length.