

# Magnolia Branch



Size: Approximately 40" W x 55" H

Quilt designed by Marinda Stewart  
Confident Beginner



118 West 22nd Street 5th Floor New York, NY 10011  
Tel: 212.704.0774 Fax: 212. 633. 0272 email: info@michaelmillerfabrics.com

[www.michaelmillerfabrics.com](http://www.michaelmillerfabrics.com)

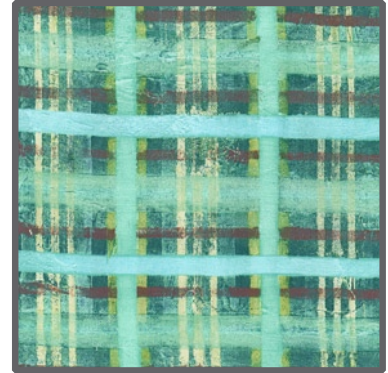
# FABRIC REQUIREMENTS



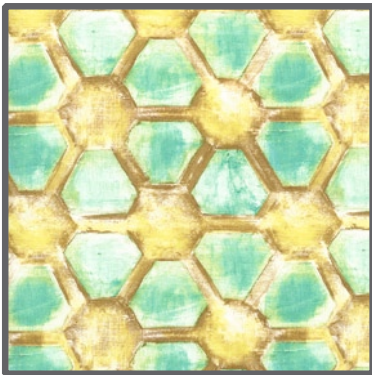
**CJ4817 Yellow  
Blooming Tulip  
Fat 1/4"**



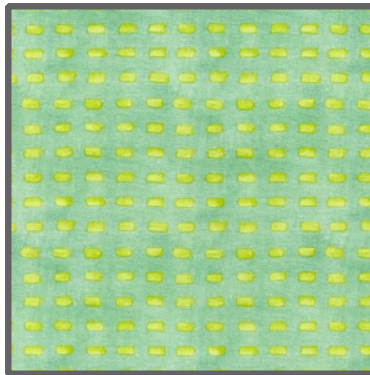
**CJ4814 Aqua  
Magnolia Branch  
Fat 1/4"**



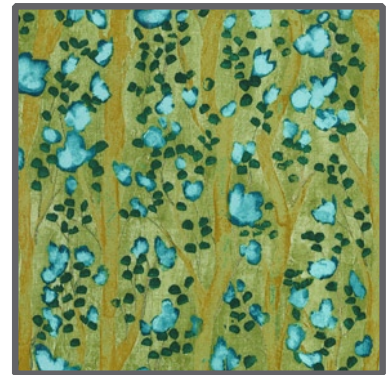
**CJ4815 Turq  
Textured Plaid  
3/8 yard**



**CJ4818 Aqua  
Magnolia Geometric  
3/8 yard**



**CJ4851 Green  
Painted Dash  
3/8 yard**



**CJ4813 Olive  
Climbing Blossoms  
3/8 yard**



**CJ4812 Yellow  
Scattered Buds  
3/8 yard**



**CJ4816 Teal  
Painted Canvas  
3/8 yard**



**CJ4816 Lemon  
Painted Canvas  
3/8 yard**



**CX1087 Sienna  
Marble  
3/8 yard**



**K4151  
Krystal  
6" x 10" piece**

**Backing & Batting 45" x 60"**

## "Magnolia Branch"

Quilt by Marinda Stewart

Size: Approximately 40"W x 55"H Skill Level: Confident Beginner

### Materials

Fabric	Yardage	Cutting
* 'A' CJ4817 Yellow Blooming Tulip	Fat 1/4"	(1) each - 5 1/2" W x 12 1/2" H, 5 1/2" W x 10 1/2" H, 5 1/2" x 5 1/2", 5 1/2" W x 7 1/2" H, 5 1/2" W x 14 1/2" H, 5 1/2" W x 17 1/2" H
* 'B' CJ4814 Aqua Magnolia Branch	Fat 1/4"	(1) each - 5 1/2" W x 17 1/2" H, 5 1/2" W x 11 1/2" H, 5 1/2" W x 9 1/2" H, 5 1/2" W x 12 1/2" H, 5 1/2" W x 8 1/2" H
'C' CJ4815 Turq Textured Plaid	3/8 yard	(2) 5 1/2" x 8 1/2", (2) 5 1/2" x 14 1/2", (1) 5 1/2" x 12 1/2"
'D' CJ4818 Aqua Magnolia Geometric	3/8 yard	(1) each - 5 1/2" x 15 1/2", 5 1/2" x 6 1/2", 5 1/2" x 16 1/2", 5 1/2" x 13 1/2", 5 1/2" x 10 1/2", 5 1/2" x 9 1/2", 5 1/2" x 7 1/2"
'E' CJ4851 Green Painted Dash	3/8 yard	5 1/2" x 6 1/2", 5 1/2" x 10 1/2", 5 1/2" x 7 1/2", 5 1/2" x 11 1/2", 5 1/2" x 9 1/2", 5 1/2" x 16 1/2"
'F' CJ4813 Olive Climbing Blossoms	3/8 yard	(2) 5 1/2" x 16 1/2", (1) each 5 1/2" x 17 1/2", 5 1/2" x 14 1/2", 5 1/2" x 4 1/2"
'G' CJ4812 Yellow Scattered Buds	3/8 yard	(2) 5 1/2" x 12 1/2", (1) each 5 1/2" x 8 1/2", 5 1/2" x 6 1/2", 5 1/2" x 13 1/2", 5 1/2" x 9 1/2"
CJ4816 Teal Painted Canvas	3/8 yard	(5) 2 1/2" x W.O.F. - Binding
** CJ4816 Lemon Painted Canvas	3/8 yard	(6) Large Petals, (4) Small Petals
** CX1087 Sienna Marble	3/8 yard	(1) Main Branch, (1) Medium Branch, (2) Small Branches
K4151 Krystal	6" x 10" piece	(2) Flower Calyxes

\* One way print. Cut (4) 5 1/2" W x 18" pieces from Fat 1/4". Cut individual pieces from each 18" length.  
 \*\* Free hand draw - refer to photo for pieces.

#### Also Needed

45" x 60" backing & batting, threads to match, fusible web, scissors, straight pins, acrylic ruler, rotary cutter, pencil, chalk pencil, and mat. OPTIONAL: Non-stick pressing sheet

## Disclaimers

This pattern is provided as a courtesy to quilt stores, catalogs, and quilters. Michael Miller Fabrics, LLC is not responsible for the accuracy of any kits packaged to accompany this pattern. Please direct any inquiries to the kit maker.

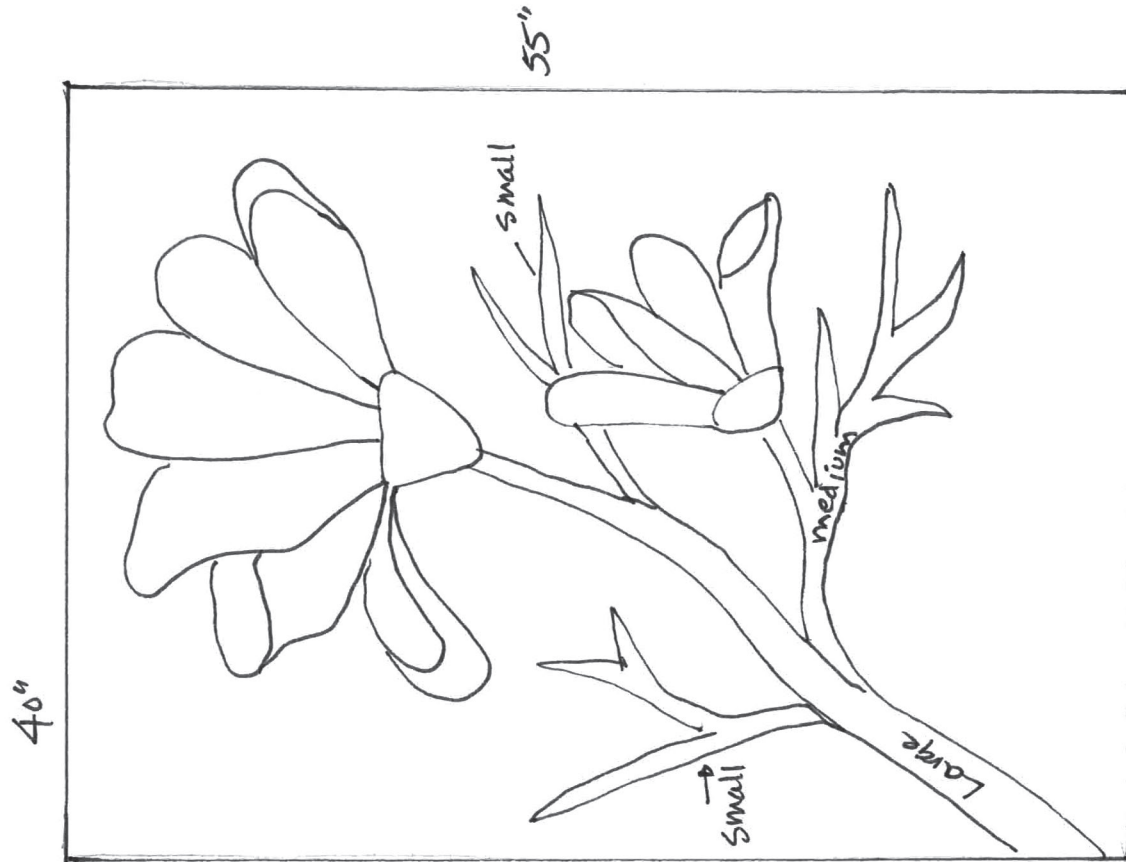
Yardage requirements for this pattern may allow for excess yardage to accommodate specific placement of motifs or to allow for any fussy-cutting to achieve the finished quilt design.

While every attempt has been made to give accurate measurements, yardage requirements, and construction directions; this does not allow personal variations in measuring, cutting, and or sewing. The enclosed directions were used in the construction of the original quilt.

## Directions

1. All background fabrics are 5 1/2" wide. Make (8) 55 1/2" vertical rows as follows from the top to the bottom - **Row 1** - "A" - 12 1/2", "G" - 8 1/2", "C" - 14 1/2", "E" - 6 1/2", "D" - 15 1/2", **Row 2** - "D" - 6 1/2", "F" - 16 1/2", "A" - 10 1/2", "B" - 17 1/2", "G" 6 1/2", **Row 3** - "E" - 10 1/2", "D" - 16 1/2", "F" - 17 1/2", "C" - 12 1/2", **Row 4** - "A" - 5 1/2", "B" - 11 1/2", "G" - 12 1/2", "E" - 7 1/2", "D" - 13 1/2", "A" - 7 1/2", **Row 5** - "C" - 8 1/2", "E" - 11 1/2", "A" - 14 1/2", "B" - 9 1/2", "G" 13 1/2", **Row 6** - "F" - 14 1/2", "D" - 10 1/2", "C" - 14 1/2", "A" - 17 1/2", **Row 7** - "G" - 9 1/2", "B" - 12 1/2", "E" - 9 1/2", "F" - 16 1/2", "D" 9 1/2" - **Row 8** - "D" - 7 1/2", "C" - 8 1/2", "G" - 12 1/2", "B" - 8 1/2", "E" 16 1/2", "F" - 4 1/2". Sew together rows 1-8 to make a 40 1/2" x 55 1/2" background.
2. The size, shape, and placement of the appliques is approximate. Refer to the photo and drawing to use as a guide. It does not need to be exact. Following manufacturer's directions, draw (6) large (10"-12") petals and (4) small (8"-10") petals on to the paper side of the fusible web. Cut out each leaving a small margin. Iron onto the wrong side of CJ4816 Lemon. Cut out. Pin in place on the quilt as shown. Repeat for (2) K4151 calyx (base of each flower). For the branches, rough cut one CX1087 Large branch approximately 4" at the base to 1" at the tip and about 40" long. Iron fusible web to the back. Cut away excess. Remove paper backing from branch and large flower pieces. Fuse to the quilt as shown. Using the chalk pencil, from the remaining CX1087 fabrics, on the right side, draw one 25" medium branch for the smaller flower and two accent braches as shown. Cut out. Back with fusible web. Cut away excess fusible. Remove paper backing from all pieces. Place on quilt top as shown. Fuse in place. Machine satin stitch all raw edges to finish. Add petal details as shown.
3. Layer backing, batting, and quilt top. Baste.
4. Quilt as desired.
5. Bind quilt with CJ4816 Teal piecing as needed for length.

# Magnolia Branch Pattern



Suggested pattern and placement

\*Marinda © 2011

Row 8	D-7"	C-8"	G-12"	B-8"	E-16"	F-4"
Row 7	G-9"	B-12"	E-9"	F-16"	D-9"	
Row 6	F-14"	D-10"	C-14"	A-17"		
Row 5	C-8"	E-11"	A-14"	B-9"	G-13"	
Row 4	A-5"	B-11"	G-12"	E-7"	D-13"	A-7"
Row 3	E-10"	D-16"		F-17"	C-12"	
Row 2	D-6"	F-16"	A-10"	B-17"	G-6"	
Row 1	A-12"	G-8"	C-14"	E-6"	D-15"	

Measurements given are finished (sewn)