

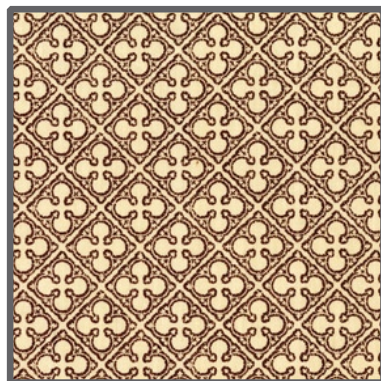
# FABRIC REQUIREMENTS



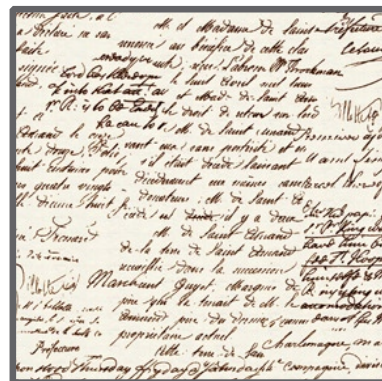
**CX4646 Cream  
French Post  
5/8 yard**



**CX4363 Cream  
Scented Garden  
3/4 yard**



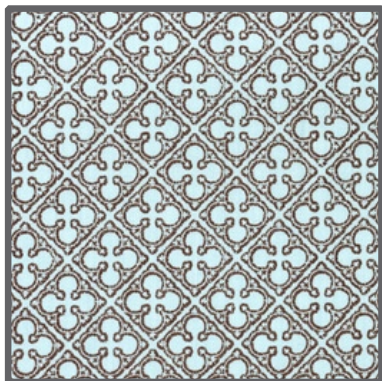
**CX4528 Candlelight  
Quatrefoils  
1 yard**



**CX4521 Brown  
Old Script  
3/8 yard**



**DC4252 Rose  
Sweet Roses  
Fat 1/4**



**CX4528 Breeze  
Quatrefoils  
5/8 yard**

# FRENCH POST



Size: Approximately 40"W x 50"H

**Quilt designed by Marinda Stewart  
Skill Level : Beginner**



118 West 22nd Street 5th Floor New York, NY 10011  
Tel: 212.704.0774 Fax: 212. 633. 0272 email: info@michaelmillerfabrics.com

[www.michaelmillerfabrics.com](http://www.michaelmillerfabrics.com)

**45" x 54" Backing and Batting**

**"French Post"**  
Quilt by Marinda Stewart

Size: Approximately 40"W x 50"H - Skill Level: Beginner

### Materials

Fabric	Yardage	Cutting
CX4646 Cream French Post	5/8 yard	(6) 6 1/2" W x 20 1/2" H
CX4363 Cream Scented Garden	3/4 yard	(8) 10 1/2" squares
CX4528 Candlelight Quatrefoils	1 yard	(32) 6" square
CX4521 Brown Old Script	3/8 yard	(15) 5" squares
DC4252 Rose Sweet Roses	Fat 1/4	(8) 5" squares
CX4528 Breeze Quatrefoils	5/8 yard	(5) 2 1/2" x W.O.F. - Binding (8) 5" squares

**Additional Materials:** 45" x 54" Backing, 45" x 54" Batting, Threads to match, Straight Pins, Scissors, Acrylic Ruler, Rotary Cutter, and Mat.

### Disclaimers

This pattern is provided as a courtesy to quilt stores, catalogs, and quilters. Michael Miller Fabrics, LLC is not responsible for the accuracy of any kits packaged to accompany this pattern. Please direct any inquiries to the kit maker.

Yardage requirements for this pattern may allow for excess yardage to accommodate specific placement of motifs or to allow for any fussy-cutting to achieve the finished quilt design.

While every attempt has been made to give accurate measurements, yardage requirements, and construction directions; this does not allow personal variations in measuring, cutting, and or sewing. The enclosed directions were used in the construction of the original quilt.

### Directions

1. For one right square triangle unit, place one CX4521 5" square right sides together with one DC4252 5" square. Draw a diagonal line from opposite corners. Sew 1/4" on each side of the line. Cut apart on the drawn line. Press open. Trim each unit to an accurate 4 1/2" square, yield is two squares. Make (15) right square triangles using CX4521 and DC4252. Make (15) units using CX4521 and CX4528 Breeze.
2. Sew five CX4521/DC4252 units together in a row. Make three rows. Repeat with CX4521/CX4528 Breeze units. Sew one pieced unit to the right side of each CX4646 20 1/2" piece. Set aside.
3. Place one CX4528 Candlelight 6" square right sides together in upper corner of CX4363 10 1/2" square. Draw a diagonal line from outside corner to outside corner. Stitch on the line. Trim excess to 1/4" seam allowance. Press open. Repeat for opposite corner. Next stitch remaining two corners. Make (8) blocks total.
4. For Row (1) - sew one 20 1/2" pieced unit to the top of one 10 1/2" square. Sew another different 20 1/2" unit to the bottom of the square. Refer to the photo.  
For Row (2) - sew one 10 1/2" square to the top of a 20 1/2" unit. Sew two 10 1/2" squares to the bottom of the unit. Sew to the right side of Row 1.  
For Row (3) - sew two 10 1/2" squares together. Sew to the top of one 20 1/2" unit. Sew one 10 1/2" square to the bottom. Sew to the right side of the quilt.  
For Row (4) - Repeat Row (1). Sew to the right side of the quilt.
5. Layer backing, batting, and quilt top. Baste.
6. Quilt as desired.
7. Bind quilt using CX4528 Breeze pieced as needed for length.