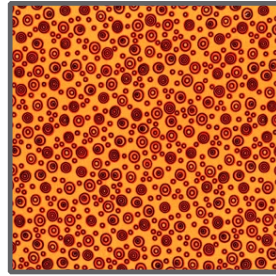


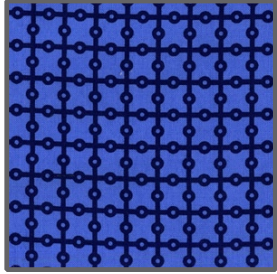
FABRIC REQUIREMENTS



**CX4459 Nite
Desert Nite
2/3 yard**



**CX3534 Orange
Circle Circle
1/8 yard**



**DC4032 Blue
Dottie Grid
1/8 yard**



**K1142
Krystal
Fat 1/4**



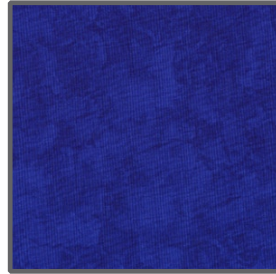
**K1143
Krystal
1/8 yard**



**K1146
Krystal
1/8 yard**



**K1148
Krystal
1/6 yard**



**K1265
Krystal
1/6 yard**



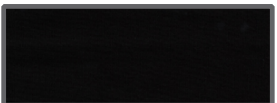
**K1267
Krystal
1/8 yard**



**K1275
Krystal
1/6 yard**



**K2276
Krystal
1 1/8 yards**



**Jet Black
1/4 yard**

Backing & Batting : 46" x 54"

Desert Nite



Size: Approximately 42"W x 50"H

Quilt designed by Marinda Stewart
Skill Level : Confident Beginner



118 West 22nd Street 5th Floor New York, NY 10011
Tel: 212.704.0774 Fax: 212. 633. 0272 email: info@michaelmillerfabrics.com

www.michaelmillerfabrics.com

"Desert Nite"

Quilt by Marinda Stewart

Size: Approximately 42"W x 50"H - Skill Level: Confident Beginner

Materials

Fabric	Yardage	Cutting
CX4459 Nite Desert Nite	2/3 yard	* Cut (1) 20 1/2" x W.O.F. Refer to diagram for cutting strips
(A) K2276 Krystal	1 1/8 yards	(5) 2 1/2" X W.O.F. - Binding ** (2) 3 1/2" x 36 1/2" (2) 3 1/2" x 50 1/2" ** (12) 4" squares (1) 3 1/2" x 4 1/2" (1) 3 1/2" x 10 1/2" (1) 3 1/2" x 7 1/2" (1) 3 1/2" x 11 1/2" (1) 3 1/2" x 4 1/2"
(B) K1267 Krystal	1/8 yard	(1) 1 1/4" x W.O.F. (1) 2 1/2" x 10 1/2" (1) 2 1/2" x 7 1/2"
(C) K1265 Krystal	1/6 yard	(1) 1 1/4" x W.O.F. (1) 2 1/2" x 6 1/2" (1) 2 1/2" x 9 1/2" (1) 1 1/2" x 8 1/2"
(D) K1275 Krystal	1/6 yard	(1) 1 1/4" x W.O.F. (1) 2 1/2" x 7 1/2" (1) 2 1/2" x 8 1/2" (1) 1 1/2" x 6 1/2"
(E) DC4032 Blue Dottie Grid	1/8 yard	(2) 1 1/2" x 8 1/2" (1) 1 1/2" x 11 1/2" (1) 1 1/2" x 6 1/2" (1) 1 1/2" x 5 1/2"
(F) K1146 Krystal	1/8 yard	(1) 1 1/4" x W.O.F. (1) 2 1/2" x 9 1/2" (1) 2 1/2" x 8 1/2" (1) 1 1/2" x 11 1/2" (1) 1 1/2" x 8 1/2"
(G) K1148 Krystal	1/6 yard	(1) 1 1/4" x W.O.F. (2) 3 1/2" x 12 1/2" (1) 3 1/2" x 6 1/2" (1) 3 1/2" x 5 1/2"
(H) K1143 Krystal	1/8 yard	(1) 1 1/4" x W.O.F. (1) 2 1/2" x 7 1/2" (1) 2 1/2" x 8 1/2" (1) 2 1/2" x 9 1/2"
(I) K1142 Krystal	Fat 1/4	(1) 2 1/2" x 10 1/2" (1) 3 1/2" x 9 1/2"
(J) CX3534 Orange Circle Circle	1/8 yard	(1) 1 1/2" x 8 1/2" (1) 1 1/2" x 5 1/2" (2) 1 1/2" x 10 1/2" (1) 1/2" x 7 1/2"
Jet Black	1/4 yard	(2) 1 1/2" x 34 1/2" (2) 1 1/2" x 38 1/2"

* Center on the motif.

** Pieced for length

Additional Materials: 46" x 54" Backing, 46" x 54" Batting, Threads to match, Straight Pins, Scissors, Acrylic Ruler, Rotary Cutter, and Mat.
OPTIONAL : Masking Tape

Disclaimers

This pattern is provided as a courtesy to quilt stores, catalogs, and quilters. Michael Miller Fabrics, LLC is not responsible for the accuracy of any kits packaged to accompany this pattern. Please direct any inquiries to the kit maker.

Yardage requirements for this pattern may allow for excess yardage to accommodate specific placement of motifs or to allow for any fussy-cutting to achieve the finished quilt design.

While every attempt has been made to give accurate measurements, yardage requirements, and construction directions; this does not allow personal variations in measuring, cutting, and or sewing. The enclosed directions were used in the construction of the original quilt.

Directions

1. Refer to the cutting diagram and cut CX4459 into 1 1/2", 2 1/2", and 3 1/2" strips following the diagram. Cut the strips in order 1 to 18. It's helpful to number each strip with a small piece of masking tape to keep the sequence in order.
2. To assemble the quilt top - follow the placement guide. Sew "C" - 6 1/2" piece to the bottom of row 1. Sew "I" - 10 1/2" piece to the top. Repeat for each row across the quilt. Each row is 36 1/2" long.
3. Sew rows together in sequence to complete the bargello quilt top. Finished piece is 34 1/2 w" X 36 1/2" h. Remove masking tape if used.
4. Sew Jet Black 34 1/2" strip to the top and bottom of the quilt. Sew Jet Black 38 1/2" strip to each side.
5. For the top border - sew K1146, K1148, K1143 1 1/4" strips together lengthwise. Cut (12) right square triangles from the strip inverting every other point.



Cut (6) K2276 4" squares in half diagonally to make (12) right square triangles. Sew one K2276 and one striped triangle together to make one square. Trim to an accurate 3 1/2" square. Make (12) total. Sew together as shown to make zig-zag border. Sew to the top of the quilt.

6. Repeat Step #5 for the bottom border using K1267, K1265, K1275 for the stripes. Sew completed border to the bottom of the quilt.
7. Sew K2276 36 1/2" piece to the top and bottom of the quilt. Sew K2276 pieced for length 50 1/2" strips to each side.
8. Layer backing, batting, and quilt top. Baste.
9. Quilt as desired.
10. Bind using K2276 pieced as needed for length.

"Desert Nite" Quilt

Cutting, Fabric and Placement Guide for Bargello

Row	1	2	3	4	5	6	7	8	9	10	11	12	13	14	15	16	17	18
	10" "I"	8" "J"	12" "G"	9" "F"	5" "J"	7" "H"	6" "G"	10" "J"	8" "F"	9" "I"	11" "F"	8" "H"	5" "G"	7" "I"	9" "H"	8" "E"	12" "G"	10" "J"
	2" ←	14" →	3" →	2" "I"	14" →	2" "I"	3" →	14" →	2" "I"	3" →	14" →	2" "I"	3" →	14" →	2" "I"	3" →	14" →	2" "I"
	6" "C"	8" "E"	4" "A"	7" "D"	11" "E"	9" "B"	10" "A"	6" "E"	8" "C"	7" "A"	5" "E"	8" "D"	11" "A"	9" "C"	7" "B"	8" "E"	4" "A"	6" "D"

CX 449A

A - K2276
 B - K1267
 C - K1265
 D - K1275

E - DC4032
 F - K1146
 G - K1148
 H - K1143

I - K1142
 J - CX3534

*Manda ©2010