

BELLA BUTTERFLY



Size: 51 1/2" x 63 1/2"

Quilt designed by Ellen Maxwell
Beginner Level



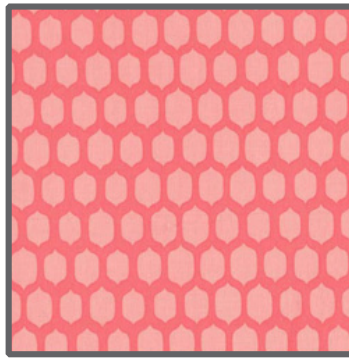
118 West 22nd Street 5th Floor New York, NY 10011
Tel: 212.704.0774 Fax: 212. 633. 0272 email: info@michaelmillerfabrics.com

www.michaelmillerfabrics.com

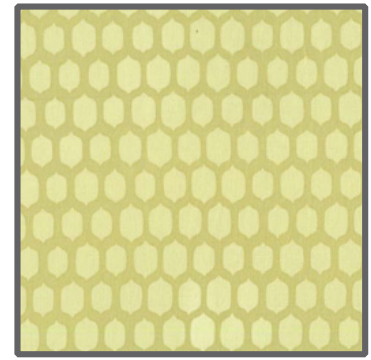
FABRIC REQUIREMENTS



**PS5426 Aqua
Sweet Spots
1/4 yard**



**PS5426 Pink
Sweet Spots
1/4 yard**



**PS5426 Green
Sweet Spots
1/4 yard**



**PS5425 Aqua
Medallions
1/4 yard**



**PS5425 Pink
Medallions
1/4 yard**



**PS5425 Green
Medallions
1/4 yard**



**PS5432 Aqua
Sweet Leaves
1/4 yard**



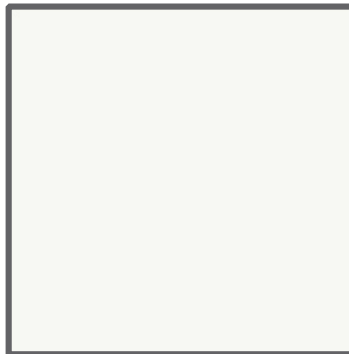
**PS5432 Pink
Sweet Leaves
1/4 yard**



**PS5432 Bloom
Sweet Leaves
1/4 yard**



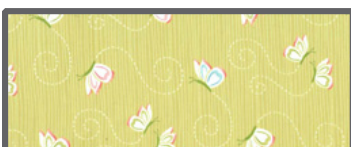
**PS5431 Multi
Happy Houndstooth
1/3 yard**



**SC5333 Soft White
Cotton Couture
7/8 yard**



**PS5428 Pink
Pretty Paisley
3 yards backing**



**PS5430 Green
Flutterby
1/2 yard binding**

"Bella Butterfly"

Quilt by Ellen Maxwell Size: 51 1/2" x 63 1/2"

Beginner Level

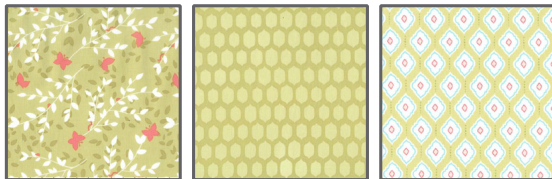
Disclaimers

This pattern is provided as a courtesy to quilt stores, catalogs, and quilters. Michael Miller Fabrics, LLC is not responsible for the accuracy of any kits packaged to accompany this pattern. Please direct any inquiries to the kit maker.

Yardage requirements for this pattern may allow for excess yardage to accommodate specific placement of motifs or to allow for any fussy-cutting to achieve the finished quilt design.

While every attempt has been made to give accurate measurements, yardage requirements, and construction directions; this does not allow personal variations in measuring, cutting, and or sewing. The enclosed directions were used in the construction of the original quilt.

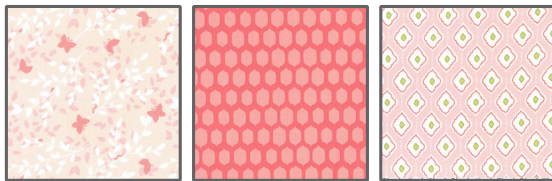
Directions



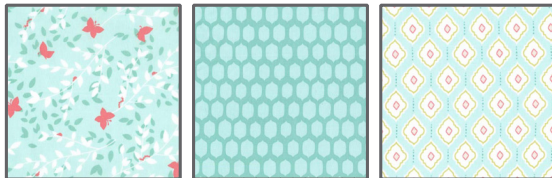
Step One:

Cut 2 strips 3 1/2" x wof of each of the top 9 fabrics listed. Make three strip sets - using the three fabrics together as shown. 1/4" seams

Strip Set 1



Strip Set 2



Strip Set 3



Repeat to end up with 2 strips sets of each color way listed. Press.

Step Two:

Cut the strip sets into 3 1/2" sections. Combine one section of each color way to make a 9 patch block. Sew 20 - 9 patch blocks. See quilt photo.

Step Three:

Cut 3 - 9 1/2" strips x wof of Soft White. Cut these strips into 3 1/2" sections. 34 - 3 1/2" x 9 1/2" sections will be needed for the quilt.

Cut 3 - 3 1/2" strips x wof of PS_5431 Multi

Cut into 30 - 3 1/2" x 3 1/2" squares for setting corners.

Step Four:

Lay out quilt - following the diagram. Sew rows across. Then sew all rows together. Press.

Step Five:

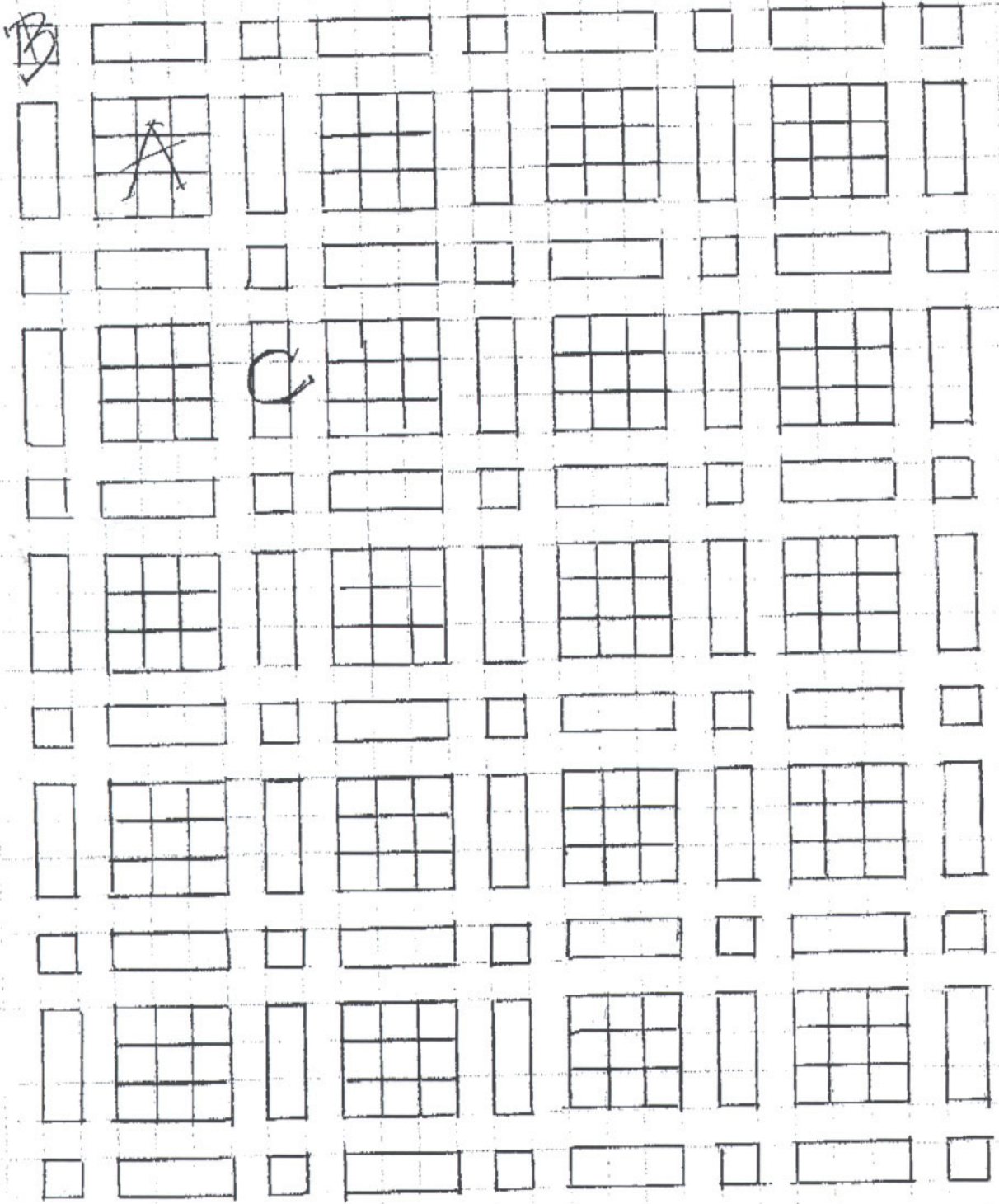
Cut backing fabric in half and sew a center seam. Press. Layer with batting and backing. Quilt as desired.

Step Six:

Cut 6 strips - 2 1/4" x wof - for binding. Sew end to end and sew on as French Fold Binding.

wof = width of fabric

Bella Butterfly Layout 10-11 EMM



A = 9 patch

B = setting corners PS 5431 Multi

C = soft white sections