

## Fabric Requirements



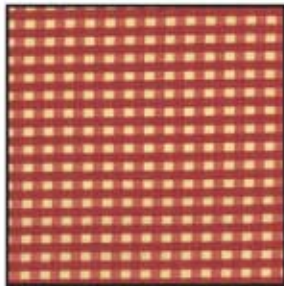
CX2008 Retro  
Transportation  
1-1/8 yards



CX3295 Retro  
Lollidot  
1/2 yard



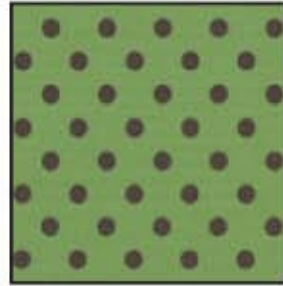
CX0323 Retro  
Stripe  
3/8 yard



CX3248 Provence  
Kid Check  
1/4 yard



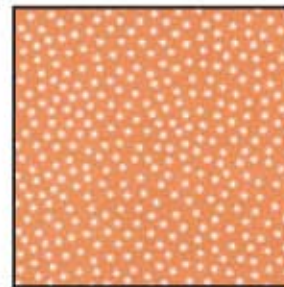
CX1338 Yellow  
Party Dots  
1/4 yard



CX2490 Avocado  
Dumb Dot  
1/4 yard



K1053  
Krystal  
1/6 yard



CX1065 Tangerine  
Garden Pindot  
1/6 yard



Backing  
52" x 52"



- Acrylic ruler, mat and rotary cutter
- 100% cotton thread to match
- 52" x 52" Batting

# Transportation



Quilt measures approximately 46" x 46"

Quilt designed by Marinda Stewart



118 West 22nd Street 5th Floor New York, NY 10011

Tel: 212.704.0774 Fax: 212.633.0272 Email: [info@michaelmillerfabrics.com](mailto:info@michaelmillerfabrics.com)

[www.michaelmillerfabrics.com](http://www.michaelmillerfabrics.com)