

Fabric Requirements



CX3361 Green
Chateau Road
5/8 yard



CX2801 Khaki
Scroll Swirls
7/8 yard



CX1087 Sienna
Marble
3/4 yard



CX3197 Pistachio
Peggy Paisley
1/2 yard



CX0239 Vanilla
Countertop Texture
3/8 yard



CX1753 Brown
Fiesta Texture
1/4 yard



CM0376 Gold
Fairy Frost
1/8 yard



CX3260 Black
Rose Devine
Fat Quarter



CX3164 Tobacco
Stitch Diamonds
16"x12" piece



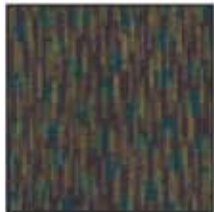
CX3060 Yellow
Water Spot
12"x 8" piece



CX3060 Stone
Water Spot
6"x 20" piece



CX1753 Rust
Fiesta Texture
4"x12" piece



CX3023 Cocoa
Fiber Stripe
9"x10" piece



CM0376 Silver
Fairy Frost
8"x 6" piece



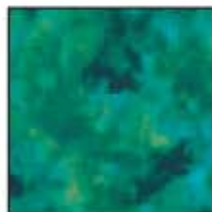
CX3060 Moss
Water Spot
4"x 4" piece



CX3214 Sun
Medieval Medallions
4"x 4" piece



K1053 Krystal
4"x 5" piece



CX3060 Meadow
Water Spot
3"x 5" piece



CX2932 Gray
Just Rocks
3"x 5" piece



K1005 Krystal
2"x 5" piece

TABLESCAPE



Skill: Intermediate

Quilt measures approximately 46" square

Designed by Marinda Stewart



118 West 22nd Street 5th Floor New York, NY 10011

Tel: 212.704.0774 Fax: 212.633.0272 Email: info@michaelmillerfabrics.com

www.michaelmillerfabrics.com