

Fabric Requirements



K1008
Krysal
1/6 yard



CX3184 Snow
Beatnik Blur
1/6 yard



CX1065 Latte
Garden Pindot
1/6 yard



CX2858 Latte
Daisy Vine
1/6 yard



CX3328 Latte
Dainty Damask
1/4 yard



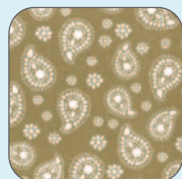
CX3318 Au Lait
Polly Paisely
1/4 yard



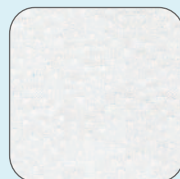
CX3318 Latte
Polly Paisely
1 yard



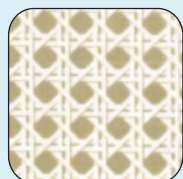
CX3323 Au Lait
Mary
1/4 yard



CX3195 Latte
Polly Paisely
3/8 yard



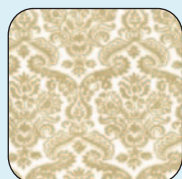
CX1065 Snow
Garden Pindot
1/6 yard



CX3339 Latte
Basket Squares
1/6 yard



CX3328 Cream
Dainty Damask
1/6 yard



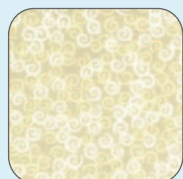
CX3328 Au Lait
Dainty Damask
1/4 yard



CX3195 Cream
Polly Paisely
1/4 yard



CX3274 Cream
Ethereal Scroll
1/4 yard



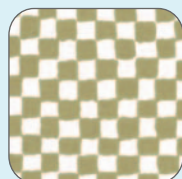
CX3275 Cream
Curliques
1/4 yard



CX3095 Latte
Dandy Damask
3/8 yard



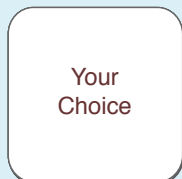
CX3328 Snow
Dainty Damask
1/8 yard



CX482 Latte
Clown Check
1/4 yard



CX3323 Latte
Mary
5/8 yard



Your
Choice

Backing & Batting
54"x54"

Designed by Marinda Stewart
Latte Log Cabin



Finished quilt is approximately 50"x50" Skill Level : Intermediate



118 West 22nd Street 5th Floor New York, NY 10011

Tel: 212.704.0774 Fax: 212.633.0272 Email: info@michaelmillerfabrics.com

www.michaelmillerfabrics.com