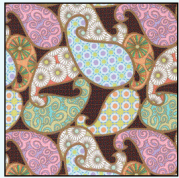
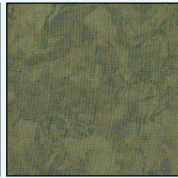


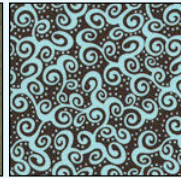
Fabric Requirements



CX2580 Brown
Paisley Jam
5/8 yard



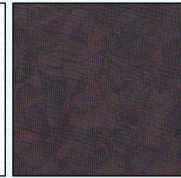
K1156
Krystal
1/2 yard



CX2630 Turq
Fusion Swirl
5/8 yard



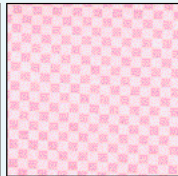
CM376 Snow
Fairy Frost
5/8 yard



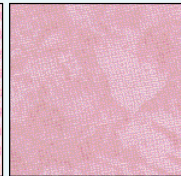
K2277
Krystal
1/2 yard



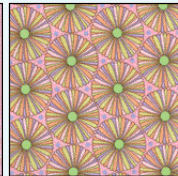
CX2630 Pink
Fusion Swirl
1/4 yard



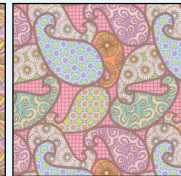
CX2781 Candy
Tiny Check
Fat Quarter



K1033
Krystal
Fat Quarter



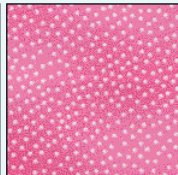
CX2581 Pink
Spin Floral
Fat Quarter



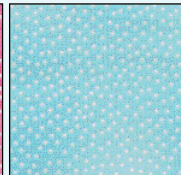
CX2580 Pink
Paisley Jam
Fat Quarter



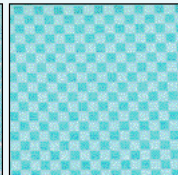
K2053
Krystal
Fat Quarter



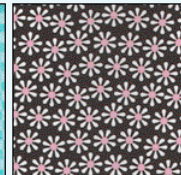
CX1065 Pink
Pindot
1/8 yard



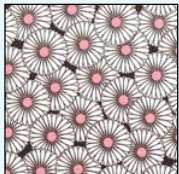
CX1065 Turq
Pindot
1/8 yard



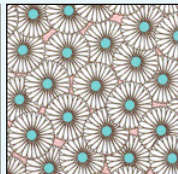
CX2781 Turq
Tiny Check
1/8 yard



CX2507 Brown
Daisy Flowers
1/8 yard



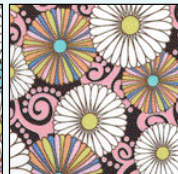
CX2582 Pink
Fusion Profusion
1/8 yard



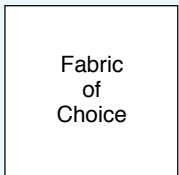
CX2582 Turq
Fusion Profusion
1/8 yard



CX2579 Turq
Floral Fusion
1/8 yard

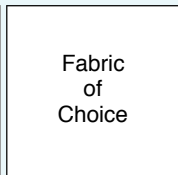


CX2579 Pink
Floral Fusion
1/8 yard



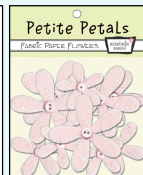
Fabric
of
Choice

Batting
56" square
+ 1/4 yard

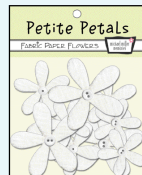


Fabric
of
Choice

Backing
3 1/2 yards



PET008
Petite Petals
1 Package



PET009
Petite Petals
1 Package



PET010
Petite Petals
1 Package

FLORAL FUSION

Designed by Marinda Stewart



Finished quilt approximately 49 1/2" x 49 1/2"

Michael Miller Fabrics LLC.

118 west 22nd street 5th floor New York, NY 10011

Tel. 212-704-0774 Fax. 212-633-0272

Email: mmf@michaelmillerfabrics.com Website: www.michaelmillerfabrics.com