

Hospitality

Quilt designed by Marinda Stewart. Quilt measures approximately 49" x 49"

Fabric	Yardage	Cutting
CX3328 Snow	7/8 yard	Cut one 8-1/2" square. Cut forty outside triangles, using the Template provided.
CX3184 Snow	1/4 yard	Cut one 8-1/2" square.
CX1065 Snow	Fat Quarter	Cut one 8-1/2" square. Cut four 2-7/8" squares.
CX2781 Snow	1/4 yard	Cut one 8-1/2" square.
K1008 Tan	9" square	Cut two leaves using Template B and two leaves using Template D.
K2008 Cocoa	Fat Quarter	Cut one leaf using Template A. Cut two leaves using Template C. Cut four 2-7/8" squares.
CX3195 Latte	5/8 yard	Cut one pineapple using Template E. Cut seventy-two 1-1/2" x 4-1/2" pieces.
CX3275 Cream	Fat Quarter	Cut twenty-four 2-1/2" x 4-1/2" pieces.
CX3328 Au Lait	Fat Quarter	Cut seventy-two 1-1/2" squares.
CX3318 Au Lait	Fat Quarter	Cut twenty-two 1-1/2" squares.
CX1065 Latte	3/8 yard	Cut forty-four 2-1/2" x 4-1/2" pieces.
CX2858 Latte	Fat Quarter	Cut twenty-four 2-1/2" squares.
CX3328 Latte	3/8 yard	Cut forty-eight 2-1/2" squares.
CX3323 Latte	1 yard	Cut two 2-1/2" x 32-1/2" pieces. Cut two 2-1/2" x 36-1/2" pieces.
		Cut thirty-six inside triangles using the template provided. Cut four corners using the template provided.

You will also need:

54" X 54" backing

54" X 54" batting plus scraps for the pineapple.

6-1/2 yards of pre-made bias CX1065 Garden Pindot - Latte.

1 yard of pre-made bias rick-rack CX1065 Garden Pindot - Latte

4 yards of 1-1/2" wide cotton lace.

Fusible web

Threads to match,

Scissors, straight pins, acrylic ruler, mat, rotary cutter

Disclaimers

- This pattern is provided as a courtesy to quilt stores, catalogs and quilters. Michael Miller Fabrics, LLC is not responsible for the accuracy of any kits packaged to accompany this pattern. Please direct any inquires to the kit maker.
- Yardage requirements for this pattern may allow for excess yardage to accommodate specific placement of motifs or to allow for any fussy-cutting to achieve the finished quilt design.
- While every attempt has been made to give accurate measurements, yardage requirements and construction directions, this does not allow for personal variations in measuring, cutting and or sewing. the enclosed directions were used in the construction of the original quilt.

Assembly Instructions

- 01) Sew the CX3328-snow, CX3184-snow, CX1065-snow and CX2781 8-1/2" squares together to make one 16-1/2" four-patch square.
- 02) Following the manufacturer's directions, trace leaves onto fusible web. Iron leaves onto K1008 and K2008 as directed. Cut out leaves and arrange as shown. Fuse in place. Machine appliqué all raw edges to finish.
- 03) Top stitch six rows of bias CX1065 Latte rick-rack trim across pineapples as shown. Cut several layers of scrap batting slightly smaller than the pineapple. Place batting behind the pineapple and machine appliqué pineapple to the four-patch block as shown.
- 04) **For Border One:** Sew sixteen 1-1/2" CX3195 Latte squares and sixteen CX3275 Cream 1-1/2" squares together to make one 2-1/2" x 16-1/2" checkerboard row. Repeat to make a second 2-1/2" x 16-1/2" checkerboard row. Sew to the top and bottom of the four-patch block.
- 05) Sew twenty 1-1/2" CX3195 Latte squares and twenty CX3275 Cream 1-1/2" squares together to make one 2-1/2" x 20-1/2" checkerboard row. Repeat to make a second 2-1/2" x 20-1/2" checkerboard row. Sew to the sides of the four-patch block. to make the quilt top.
- 06) **For Border Two:** Place one 2-1/2" CX3318 Au Lait square on the left side of one 2-1/2" x 4-1/2" CX3328 Au Lait strip, right sides together (Fig. 1). Mark and sew across the diagonal from the upper right corner to the lower left corner (Fig. 1). Open out the triangle formed and finger press the seam open (Fig. 2). Check that the corners are aligned squarely. Flip the triangle back down and trim away the excess fabric approximately 1/4" for the seam allowance.
- 4) Place another 2-1/2" CX3318 Au Lait square on the right side of the 2-1/2" x 4-1/2" CX3328 Au Lait strip, right sides together (Fig. 3). Mark and sew across the diagonal from the upper left corner to the lower right corner (Fig. 3) to make one Flying Goose unit. Repeat to make twenty flying geese units.

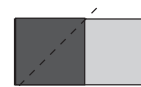


Fig. 1



Fig. 2

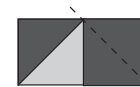


Fig. 3

Assembly Instructions

- 08) Sew together five flying geese blocks end to end to make a Border Two row. Repeat to make three more Border two rows.
- 09) Sew a Border Two row to the top and bottom of the quilt top.
- 10) Sew one 2-1/2" CX3318 Au Lait square to each end of the remaining two Border Two rows. Sew the rows to each side of the quilt top.
- 11) **For Border Three:** Place one 2-1/2" CX2858 square on top of one 2-1/2" x 4-1/2" CX3195 Latte piece, right sides together (fig. 4). Sew across the diagonal of the square from the upper right to lower left corner (fig. 4). Flip out the triangle formed and trim (fig. 5). Repeat to make twenty-four CX3195 Picket Fence unit.

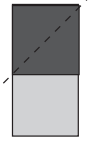


Fig. 4

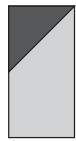


Fig. 5

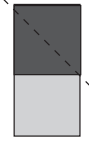


Fig. 6



Fig. 7

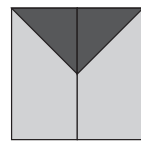


Fig. 8

- 12) Place one 2-1/2" CX2858 square on top of one 2-1/2" x 4-1/2" CX1065 Latte piece, right sides together (fig. 6). Sew across the diagonal of the square from the upper left to lower right corner (fig. 6). Flip out the triangle formed and trim (fig. 7). Repeat to make twenty-four CX1065 Picket Fence unit.
- 13) Sew together one CX1065 Picket Fence Unit and one CX3195 Picket Fence Unit to make one Border Three Unit (fig. 8). Repeat to make twenty-four Border Three units total.
- 14) Sew together six Border Three units to make one Border Three strip. Repeat to make three more Border Three strips.
- 15) Sew one Border Three strip to the top and bottom of the quilt top.
- 16) **For the Border three cornerstones:** Place one 2-7/8" K2008 square on top of one 2-7/8" CX1065 Snow square, right sides together. Draw a diagonal line through the center of the top block (Fig. 9).
- 08) Sew 1/4" away from the drawn diagonal line on each side (Fig. 10).
- 09) Cut the squares across the drawn diagonal line to make two half-square triangles (Fig. 11). Repeat to make sixteen half-square triangles (fig. 12).



Fig. 9



Fig. 10



Fig. 11



Fig. 12

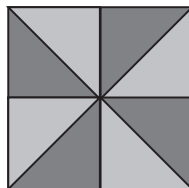
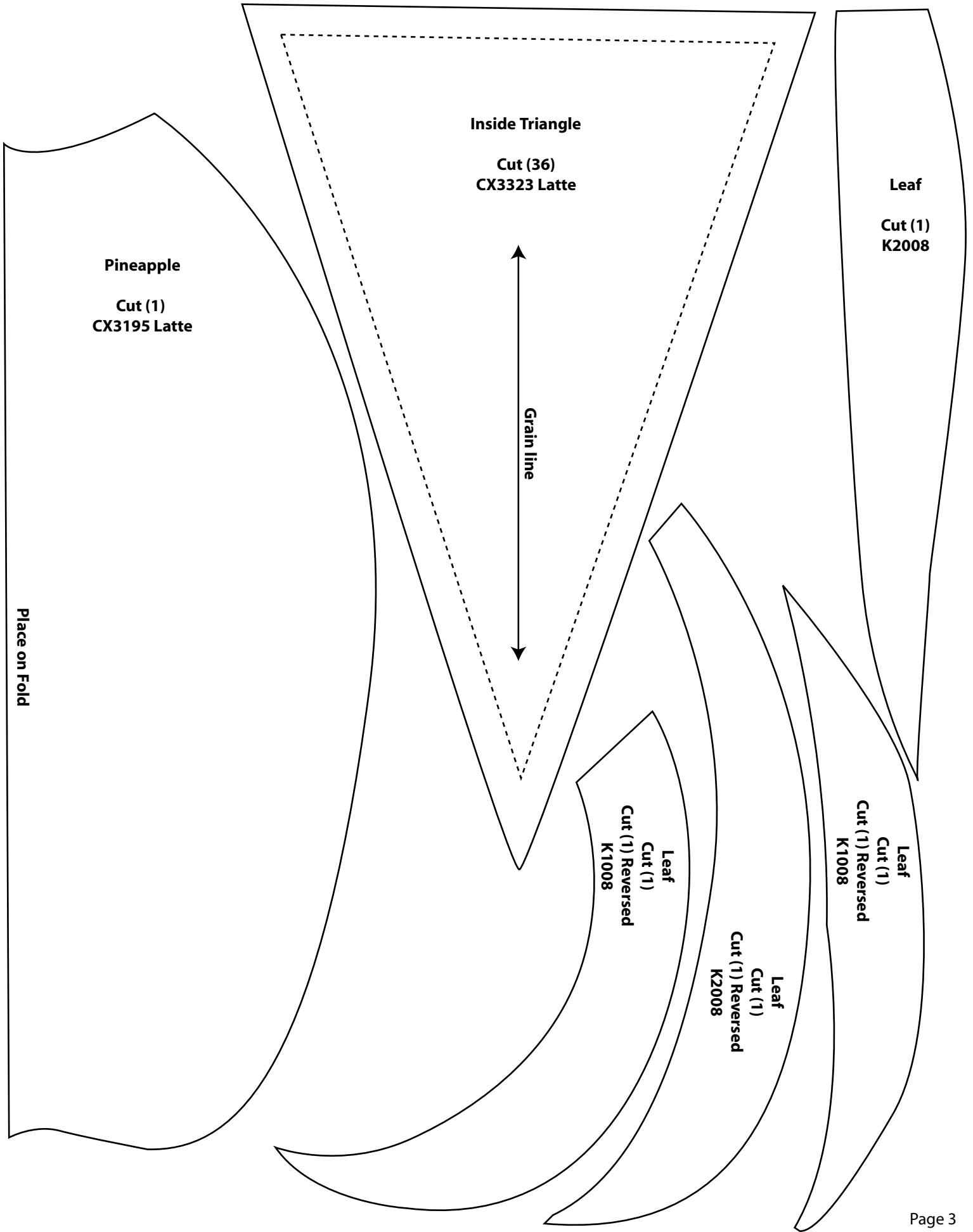


Fig. 13

- 10) Sew four half-square triangles together to make a pinwheel block (fig. 13). Make four pinwheel blocks total.
- 11) Sew one pinwheel block to each end of the remaining two Border Three strips. Sew the strips to each side of the quilt top.
- 12) **For Border Four:** Sew one 2-1/2" x 32-1/2" CX3328 Latte strip to the top and bottom of the quilt top. Sew one 2-1/2" x 36-1/2" CX3328 Latte strip to each side of the quilt top.
- 13) Top stitch the cotton lace to the border as shown, mitering each corner.
NOTE: It may be easier to add the lace after quilting depending on your quilting method.
- 14) **For Border Five:** Starting with one CX3328 Snow Outside Triangle, sew together ten CX3328 Snow Outside Triangles and nine 3323 Latte Inside triangles, alternating them to make one row. Repeat to make three more rows.
- 15) Sew one row to the top and bottom of the quilt top along the CX3323 edge.
- 16) Sew one CX3323 Latte Corn piece to each end of the remaining two rows. Sew one row to each side of the quilt top.
- 17) Layer and quilt as desired.
- 18) Using CX1065-Latte bias binding, bind the quilt edges. Ease the fullness on the curves. Clip at the inside corners of scallops. Fold the bias to the back. Hand or machine stitch the binding in place to finish.



Pineapple
Cut (1)
CX3195 Latte

Inside Triangle
Cut (36)
CX3323 Latte

Grain line

Leaf
Cut (1)
K2008

Leaf
Cut (1)
Cut (1) Reversed
K1008

Leaf
Cut (1)
Cut (1) Reversed
K2008

Leaf
Cut (1)
Cut (1) Reversed
K1008

Place on Fold

