

FIREHOUSE FUN

Quilt designed by Marinda Stewart. Quilt measures approximately 41" x 57"

Fabric	Yardage	Cutting
CX1065 Sky CX3318 Rub	3/8 yard 7/8 yard	Cut two 5-1/2" x 30-1/2" pieces. Cut out letters for the name in the first row; Cut two 2" x 4-1/2" pieces; cut three 1-1/4" x 4-1/2" pieces; cut four 1-1/2" x 4-1/2" pieces. Cut five 2-1/4" x width of fabric (WOF) strips. Piece the strips together for binding.
CX2593 Dalmatian	1/2 yard	Cut four 5" squares; Cut two 1-1/2" x 32-1/2" pieces; Cut three 1-1/2" x WOF strips. Piece the strips together and cut two 2-1/2" x 50-1/2" strips.
K1149 CX0482 White CX3352 Black	6" x 8" 1/4 yard 2 yards	Cut four 2-1/2" x 3-1/2" blocks. Cut three 1-1/2" x 30-1/2" pieces. Fussy cut three 4-1/2" x 9-1/2" blocks, centered on #1 fire trucks; fussy cut three 4-1/2" x 6-1/2" blocks, centered on #3 fire trucks; fussy cut two 4-1/2" x 6-1/2" blocks, centered on cars; fussy cut five 2-1/2" x 3-1/2" blocks, centered on standing men; cut five 3-1/2" x 3-1/2" blocks, centered on running men; fussy cut two 4-1/2" x 7-1/2" blocks, centered on #4 fire trucks; fussy cut two 4-1/2" x 7-1/2" blocks, centered on #5 fire trucks; fussy cut three 4-1/2" x 9-1/2" blocks, centered on #9 fire trucks.
CX2573 Black CX3353 Sky	1/4 yard 3/8 yard	Cut four 1" x 32-1/2" pieces. Fussy cut thirty 2-1/2" x 2-1/2" squares, each centered on a single helmet.
CX3248 Red CX3248 Sky CX3354 Cream CX3355 Red	1/8 yard 1/8 yard 1/8 yard 1/3yard	Cut two 1-1/2" x 30-1/2" pieces. Cut two 1-1/2" x 30-1/2" pieces. Cut two 1-1/2" x 30-1/2" pieces. Cut two 1-1/2" x 30-1/2" pieces; cut three 1-1/2" x WOF. Piece the three strips together and then cut two 1-1/2" x 48-1/2" pieces.
CX3354 Sky	3/4 yard	Cut two 4" x 34-1/2" pieces; cut three 4" x WOF strips. Piece the three strips together and then cut two 4" x 57-1/2" strips.

You will also need:

49" x 65" backing

49" x 65" batting

Fusible web; permanent fabric markers - black and red

Threads to match

Scissors, straight pins, acrylic ruler, mat, rotary cutter

Disclaimers

- This pattern is provided as a courtesy to quilt stores, catalogs and quilters. Michael Miller Fabrics, LLC is not responsible for the accuracy of any kits packaged to accompany this pattern. Please direct any inquiries to the kit maker.
- Yardage requirements for this pattern may allow for excess yardage to accommodate specific placement of motifs or to allow for any fussy-cutting to achieve the finished quilt design.
- While every attempt has been made to give accurate measurements, yardage requirements and construction directions, this does not allow for personal variations in measuring, cutting and or sewing. the enclosed directions were used in the construction of the original quilt.

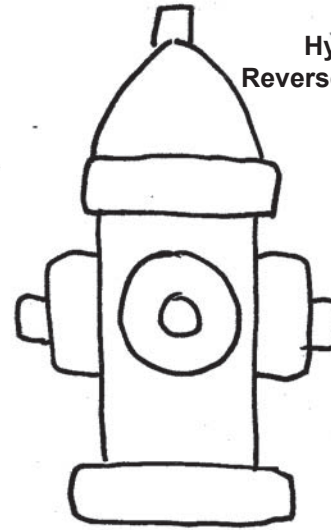
Assembly Instructions

- 01) The quilt is made of twenty-two individual rows. For Row 1, enlarge alphabet patterns 250% (or to desired size). Following manufacturer's directions, trace letters onto the paper side of the fusible web. Fuse letters to the back side of CX3318 Ruby. Cut out the letters and arrange on the 5-1/2" x 30-1/2" CX1065 strip as shown. Fuse in place. Machine satin stitch around all raw edges of the letters to complete Row 1.
- 02) For Row 2, trace four dog templates and four hydrant templates onto the fusible web. Make sure to trace all the details lines of the drawing onto the fusible web. Iron dog templates onto the back side of the 5" x 5" CX2593 Dalmatian squares and hydrants onto the back side of 2-1/2" x 3-1/2" K1149 blocks. Trace the detail lines drawn on the fusible web to the front of the fabric using a permanent marker. Refer to the quilt photo and arrange the dogs and hydrants onto the remaining 5-1/2" x 30-1/2" CX1065 sky strip as shown. Fuse in place. Machine applique all raw edges to complete Row 2. Set Row 2 aside.
- 03) Sew one 1-1/2" x 30-1/2" CX0482 White strip (Row 2) to the bottom edge of Row 1.
- 04) For Row 3, sew two 2" x 4-1/2" CX3318 Ruby pieces between the three 4-1/2" x 9-1/2" CX3352 Black #1 fire truck blocks as shown. Sew this panel to the bottom of Row 2.
- 05) For Row 4, sew two 1" x 32-1/2" CX2573 Black strips together lengthwise, offsetting the stripes to make a checkerboard for Row 4. Repeat to make a second CX2573 Black strip for Row 14. Sew Row 4 to the bottom of Row 3. Set aside Row 14.
- 06) For Row 5, sew fifteen 2-1/2" CX3353 Sky squares together to make the 2-1/2" x 30-1/2" row. Repeat to make Row 15. Sew Row 5 to the bottom of Row 4. Set aside Row 15.
- 07) For Row 6, sew one 1-1/2" x 30-1/2" CX3248 Red strip to the bottom of Row 5.
- 08) For Row 7, sew three 4-1/2" x 6-1/2" CX3352 Black #3 fire trucks and two 4-1/2" x 6-1/2" CX3352 Black cars together, end to end, alternating vehicles as shown. Sew Row 7 to the bottom of Row 6.
- 09) For Row 8, sew one 1-1/2" x 30-1/2" CX2573 Black strip to the bottom of Row 7.
- 10) For Row 9, sew one 1-1/2" x 30-1/2" CX3248 Sky strip to the bottom of Row 8.

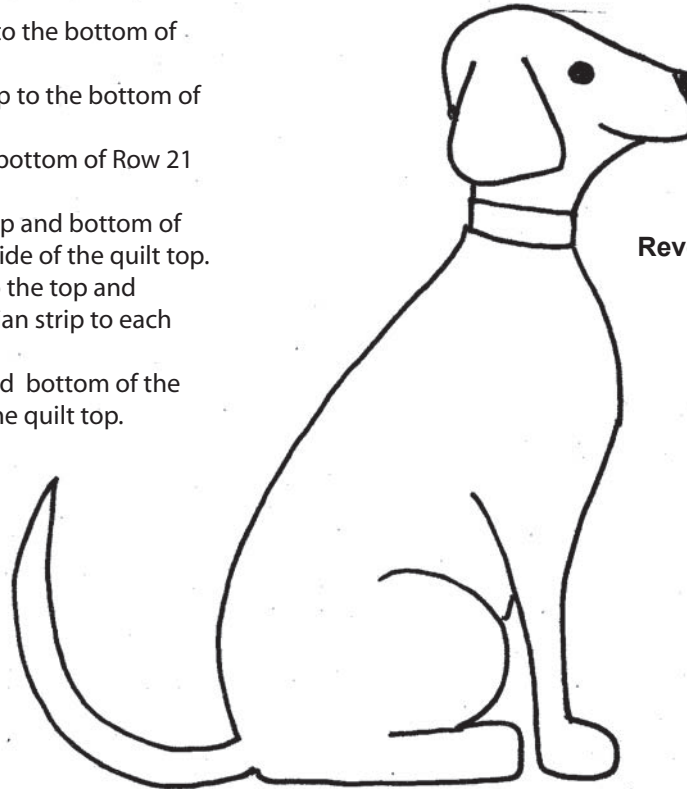
Assembly Instructions

- 11) For Row 10, sew five 2-1/2" x 3-1/2" CX3352 standing men and five 3-1/2" x 3-1/2" CX3352 men together, alternating the type of man, as shown. Sew Row 10 to the bottom of Row 9.
- 12) For Row 11, sew one 1-1/2" x 30-1/2" CX0482 White strip to the bottom of Row 10.
- 13) For Row 12, sew one 1-1/2" x 30-1/2" CX3354 Cream strip to the bottom of Row 11
- 14) For Row 13, sew two 4-1/2" x 7-1/2" CX3352 Black #4 fire trucks, two 4-1/2" x 7-1/2" CX3352 Black #5 fire trucks and three 1-1/4" x 4-1/2" CX3318 Ruby pieces together. Alternate fire trucks with CX3318 Ruby pieces as shown. Sew Row 13 to the bottom of Row 12.
- 15) Sew Row 14 from Step 5 to the bottom of Row 13.
- 16) Sew Row 15 from Step 6 to the bottom of Row 14.
- 17) For Row 16, sew the remaining 1-1/2" x 30-1/2" CX0482 White strip to the bottom of Row 15
- 18) For Row 17, sew the remaining 1-1/2" x 30-1/2" CX3248 Sky strip to the bottom of Row 16.
- 19) For Row 18, sew three 4-1/2" x 9-1/2" CX3352 Black # 9 fire trucks and four 1-1/2" x 4-1/2" CX3318 Ruby pieces together, alternating pieces, starting and ending with a CX3318 Ruby piece. Sew Row 18 to the bottom of Row 17.
- 20) For Row 19, sew the remaining 1-1/2" x 30-1/2" CX2573 Black strip to the bottom of Row 18.
- 21) For Row 20, sew the remaining 1-1/2" x 30-1/2" CX3248 Red strip to the bottom of Row 19.
- 22) For Row 21, sew the remaining 1-1/2" x 30-1/2" CX3354 Cream strip to the bottom of Row 20.
- 23) For Row 22, sew the "dogs and hydrants" Strip from Step 2 to the bottom of Row 21 to make the quilt top.
- 24) For Border #1, sew one 1-1/2" x 30-1/2" CX3355 Red strip to the top and bottom of the quilt top. Sew one 1-1/2" x 48-1/2" CX3355 Red strip to each side of the quilt top.
- 25) For Border #2, sew one 1-1/2" x 32-1/2" CX2593 Dalmatian piece to the top and bottom of the quilt top. Sew one 1-1/2" x 50-1/2" CX2593 Dalmatian strip to each side of the quilt top.
- 26) For Border #3, sew one 4" x 34-1/2" CX3354 Sky strip to the top and bottom of the quilt top. Sew one 4" x 57-1/2" CX3354 Sky strip to each side of the quilt top.
- 27) Layer, quilt and bind as desired.

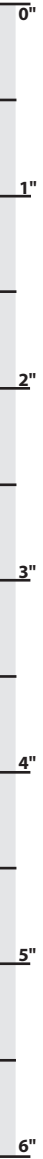
**Hydrant- Actual Size
Reversed for Fusible Applique**



**Dalmatian- Actual Size
Reversed for Fusible Applique**

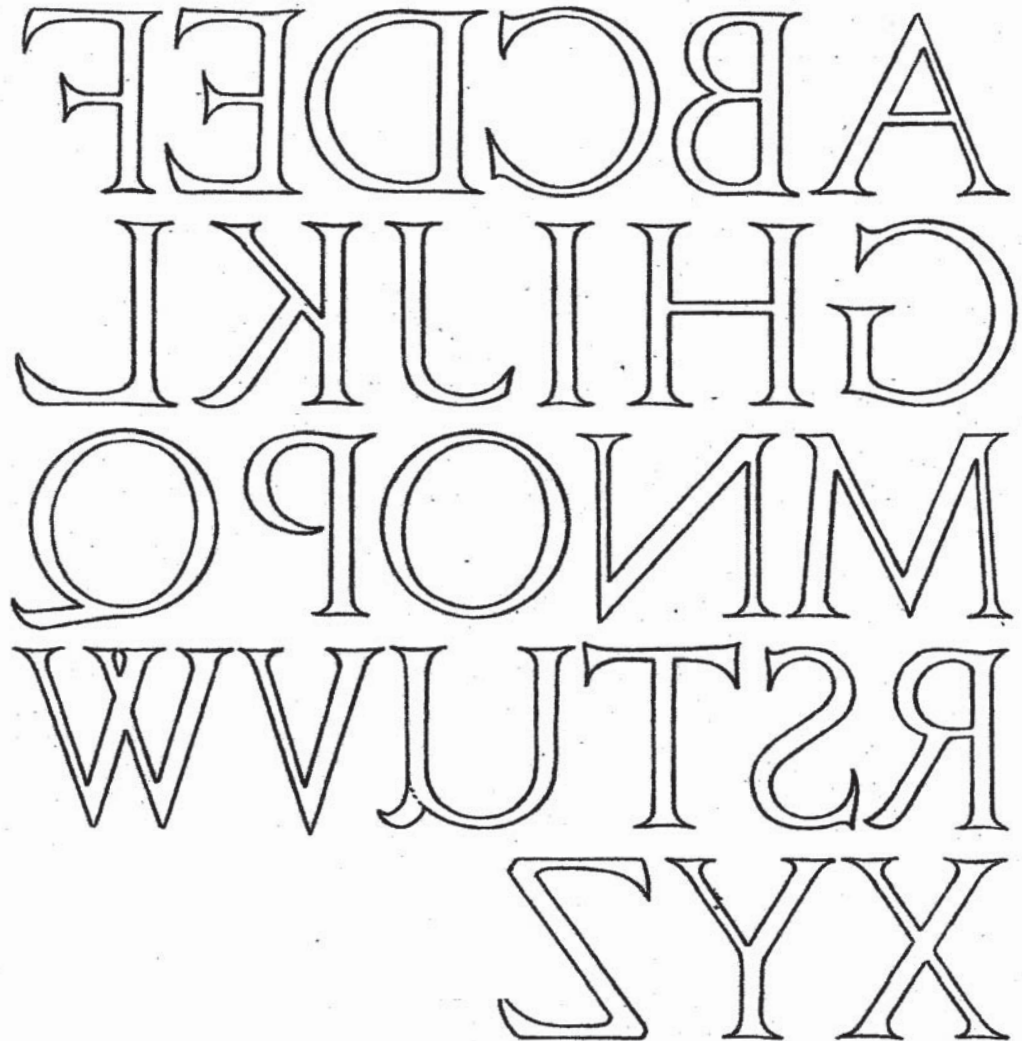


Scale Check for pdf files
When printing these templates, this ruler should measure 6" long. If it doesn't, change "page scaling" to "none" in the print dialog box.



**Firehouse Fun
Letter Templates
Reversed for Fusible Applique**

**ENLARGE 250%
or to Desired Size**



Scale Check for pdf files
When printing these
templates, this ruler should
measure 6" long.
If it doesn't, change
"page scaling" to "none"
in the print dialog box.