

FABRIC REQUIREMENTS



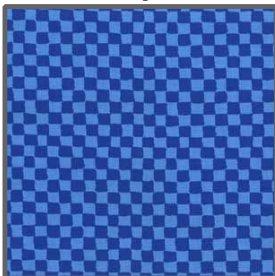
CX3990 Green Golf Course
5/8 yard



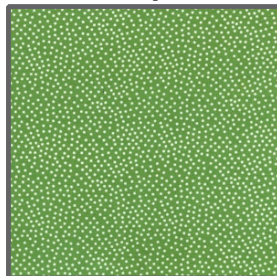
DC4015 Green Lawn
3/8 yard



CX0035 Periwinkle Sky
3/8 yard



CX0482 Peri Clown Check
4" x 10" piece



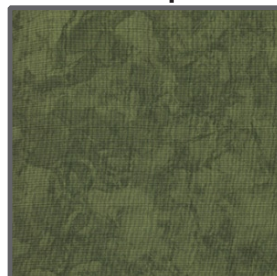
CX1065 Apple Garden Pindot
4" x 10" piece



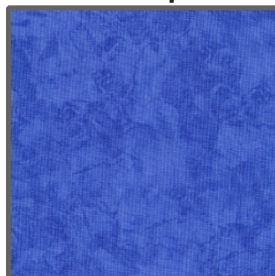
CX2517 Blue Clouds
4" x 10" piece



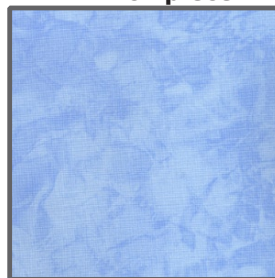
CX3992 Green Golf Tees
4" x 10" piece



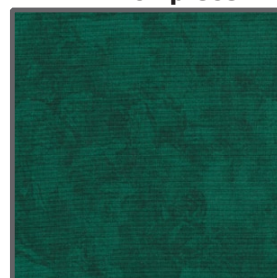
K1156 Krystal
4" x 10" piece



K1161 Krystal
4" x 10" piece



K1062 Krystal
4" x 10" piece



K1257 Krystal
4" x 10" piece



K2255 Krystal
3/4 yard

1 1/2 yards of backing fabric + batting

Golf Course Quilt



Size: Approximately 38"W x 48"H

Quilt designed by Marinda Stewart
Skill Level: Beginner



118 West 22nd Street 5th Floor New York, NY 10011
Tel: 212.704.0774 Fax: 212. 633. 0272 email: info@michaelmillerfabrics.com

www.michaelmillerfabrics.com

"Golf Course"
Quilt by Marinda Stewart

Size: Approximately 38"W x 48"H - Skill Level: Beginner

Materials

Fabric	Yardage	Cutting
*Golf Course CX3990 Green	5/8 yard	(1) 19 1/2" H x 24 1/2" W (2) 19 1/2" H x 6 1/2" W
Sky CX0035 Periwinkle	3/8 yard	(1) 5 1/2" H x 24 1/2" W (1) 4 1/2" H x 24 1/2" W (2) 5 1/2" H x 6 1/2" W (4) 4 1/2" H x 6 1/2" W (6) 3 1/4" Squares
Lawn DC4015 Green	3/8 yard	(1) 5 1/2" H x 24 1/2" W (1) 2 1/2" H x 24 1/2" W (2) 2 1/2" H x 6 1/2" W (2) 4 1/2" H x 6 1/2" W (2) 5 1/2" H x 6 1/2" W (6) 3 1/4" Squares
Krystal K2255 (Dark Green)	3/4 yard	(6) 1 1/2" H x 24 1/2" W (12) 1 1/2" H x 6 1/2" W **(2) 1 1/2" H x 48 1/2" W (5) 2 1/4" H x width of fabric for binding
Clown Check CX0482 Peri	4" x 10" piece	(3) 2 7/8" squares. Each color cut in half diagonally to make (6) triangles each color.
Clouds CX2517 Blue		
Krystal K1161 (Medium Blue)		
Krystal K1062 (Light Blue)		
Krystal K1257 (Bright Dark Green)		
Krystal K1156 (Leaf Green)		
Garden Pindot CX1065 Apple		
Golf Tees CX3992 Green		
* Or amount needed to get one full motif ** Piece to get length		
Additional Materials: 1 1/2 yard Backing Fabric, Batting, Thread to match, Straight Pins, Scissors, Acrylic Ruler, Rotary Cutter, and Mat.		

Disclaimers

This pattern is provided as a courtesy to quilt stores, catalogs, and quilters. Michael Miller Fabrics, LLC is not responsible for the accuracy of any kits packaged to accompany this pattern. Please direct any inquiries to the kit maker.

Yardage requirements for this pattern may allow for excess yardage to accommodate specific placement of motifs or to allow for any fussy-cutting to achieve the finished quilt design.

While every attempt has been made to give accurate measurements, yardage requirements, and construction directions; this does not allow personal variations in measuring, cutting, and or sewing. The enclosed directions were used in the construction of the original quilt.

Directions

- To make 4 1/2" blocks for top and bottom center panels sew one 2 7/8" triangle of each color blue to each corner of one 3 1/4" square blue. Make six blocks. Sew together side by side to make 24 1/2" strip. Repeat with greens for bottom border. Set Aside.
- To assemble center, start at the top. Sew one K2255 24 1/2" strip to the bottom of CX0035 5 1/2". Sew blue pieced unit next. Follow with one K2255 24 1/2" strip. Next sew one CX0035 4 1/2" strip. Add one K2255 24 1/2" strip. Sew CX3990 24 1/2" piece to quilt. Add one K2255 24 1/2" strip. Next sew one DC4015 2 1/2" x 24 1/2" strip. Add one K2255 24 1/2" strip. Add pieced strip in green. Sew one K2255 24 1/2" strip. Finish with DC4015 5 1/2" 24 1/2" strip.
- Sew one K2255 48 1/2" strip to each side of quilt.
- For each side start with CX0035 5 1/2" piece. Alternate each fabric with one K2255 6 1/2" strip. Next add one CX0035 4 1/2" piece. Repeat with another CX0035 4 1/2" piece. Add 19 1/2" strip of CX3990 maintaining pattern of motif as shown on cover image. Next add DC4015 2 1/2" strip, followed by DC4015 4 1/2" strip and finish with DC4015 5 1/2" strip. Make two. Sew one panel to each side of quilt matching K2255 pieces
- Layer backing, batting, and quilt top. Baste.
- Quilt as desired.
- Piece binding as needed. Bind all edges with K2255.