

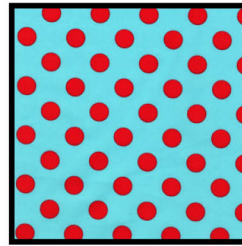
Fabric Requirements



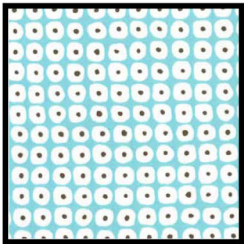
*DC3891 Summer
Zinia Path
1-1/2 yard



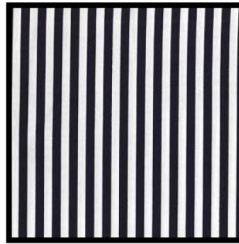
DC3894 Summer
Petit Garden
1 yard



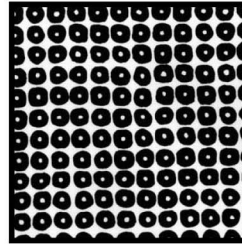
CX3744 Aqua
Quarter Dot
5/8 yard



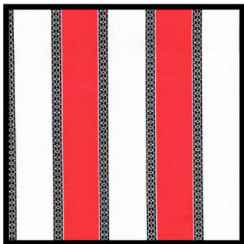
**DC3895 Ocean
Cobblestone
1-1/2 yard



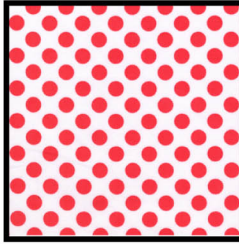
CX3584 White
Clown Stripe
1/8 yard



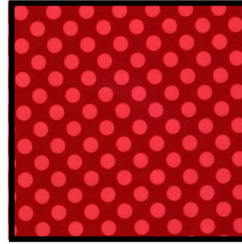
DC3895 Black
Cobblestone
3/8 yard



DC3886 Summer
Fretwork Stripe
1/3 yard



CX1492 Lipstick
Ta Dot
Fat 1/8th



CX1492 Geranium
Ta Dot
4" x 8" piece

Backing
and
Batting

55" x 55"

* One-way fabric -extra yardage needed. Extra yardage can be used in the backing.

** This fabric looks better cut as one continuous strip rather than pieced together.

Zinnia Path



Quilt is approximately 50" X 50"

Designed by Marinda Stewart



118 West 22nd Street 5th Floor New York, NY 10011
Tel: 212.704.0774 Fax: 212.633.0272 Email: info@michaelmillerfabrics.com
www.michaelmillerfabrics.com

APRIL 24, 2009

Zinnia Path

Quilt designed by Marinda Stewart. Quilt measures approximately 50" x 50"

Always measure the quilt top before cutting border lengths.

Fabric:	Yardage:	Cutting:
*DC3891 Summer	1-1/2 yards	Fussy cut three 3-1/2" w x 50-1/2" h strips from the length of fabric (LOF) centering each strip on a motif as shown.
DC3894 Summer	1 yard	Cut eight 1" x width of fabric (WOF) strips. Piece the strips together to make six 1" x 50-1/2" strips. Cut five 2-1/2" x WOF strips for the binding. See instructions to cut four flowers and two buds.
CX3744 Aqua	5/8 yard	Fussy cut eight 1-3/8" x WOF strips, centering each piece over a row of dots. Piece the strips together matching the pattern to make six 1-3/8" x 50-1/2" strips.
**DC3895 Ocean	1-1/2 yards	Cut four 8-1/2" x 50-1/2" strips from LOF.
CX3584 White	1/8 yard	See instructions to cut the Flower Stems
DC3895 Black	3/8 yard	Cut four 2-1/2" x 11" strips. See instructions to cut eighteen large leaves, four small leaves and one body.
DC3886 Summer	1/3 yard	Cut four 2-1/2" x 22" strips.
CX1492 Lipstick	Fat 1/8	See instructions to cut four 3" circles and two small wings.
CX1492 Geranium	4" x 8" piece	See instructions to cut two large wings.

* One-way fabric-extra yardage needed. Extra yardage can be used in the backing.

** This fabric looks better cut as one continuous strip rather than pieced together.

You will also need:

55" x 55" backing

55" X 55" batting

2 yards of Fusible Web

Threads to match

Scissors, straight pins, acrylic ruler, mat, rotary cutter

Disclaimers

• This pattern is provided as a courtesy to quilt stores, catalogs and quilters. Michael Miller Fabrics, LLC is not responsible for the accuracy of any kits packaged to accompany this pattern. Please direct any inquiries to the kit maker.

• Yardage requirements for this pattern may allow for excess yardage to accommodate specific placement of motifs or to allow for any fussy-cutting to achieve the finished quilt design.

• While every attempt has been made to give accurate measurements, yardage requirements and construction directions, this does not allow for personal variations in measuring, cutting and or sewing. The enclosed directions were used in the construction of the original quilt.

Assembly Instructions:

- 1) Sew one 1-3/8" x 50-1/2" CX3744 Aqua strip to each side of one 3-1/2" x 50-1/2" DC3891 Summer strip. Repeat with the remaining 1-3/8" x 50-1/2" CX3744 Aqua strips and the two other 3-1/2" x 50-1/2" DC3891 Summer strips to make three strip sets.
- 2) Sew one 1" x 50-1/2" DC3894 strip to each side of the three strips sets to complete the three strips sets. Set them aside.
- 3) Following the manufacturer's instructions and trace the listed number of templates onto the paper side of the fusible web.
- 4) Roughly cut out each shape about 1/8" outside of the drawn lines.
- 5) Press the templates onto the back side of the fabrics as listed on the templates. Cut out each shape on the drawn lines.
- 6) Press fusible web to the back side of the CX3584 White fabric. Cut from the fabric one 3/4" x 20" strip, two 3/4" x 3" strips, one 3/4" x 30" strip, one 3/4" x 35" strip and one 3/4" x 40" strip for the flower stems.
- 7) To assemble applique panel #1- Refer to the quilt photo to press one 3/4" x 35" flower stem to the center of one 8-1/2" x 50-1/2" DC3895 Ocean strip. Press five large leaves to the stem. Press one 3/4" x 3" flower stem, two small leaves and the bud to the flower stem. Press one Large Flower to the top of the 3/4" x 35" flower stem.
- 8) Finish the raw edges of each shape with a decorative stitch such as a satin or buttonhole stitch to complete applique panel #1.
- 9) To assemble applique panel #2- Refer to the quilt photo to press one 3/4" x 20" flower stem to the center of one 8-1/2" x 50-1/2" DC3895 Ocean strip. Press three large leaves and one large flower to the stem. Refer to the photo to assemble the butterfly at the top of the panel. Finish the raw edges as above.
- 10) To assemble applique panel #3- Refer to the quilt photo to press one 3/4" x 30" flower stem to the center of another 8-1/2" x 50-1/2" DC3895 Ocean strip. Press four large leaves and one flower in place. Finish the raw edges as above.

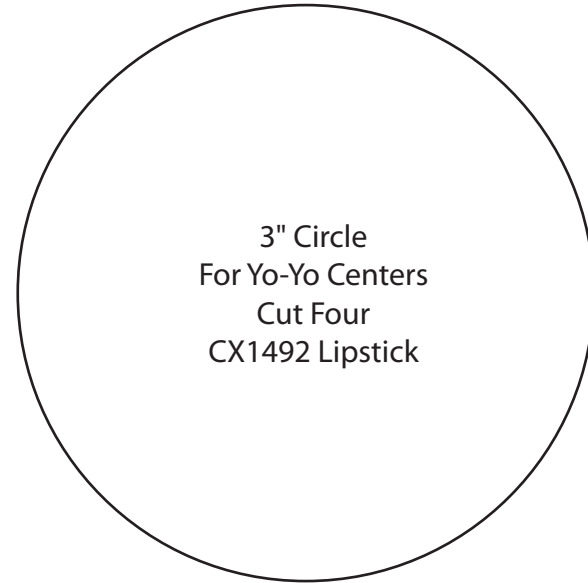
Zinnia Path

Assembly Instructions:

- 11) To assemble applique panel #4—Refer to the quilt photo to press one 3/4" x 40" stem to the center of the remaining 8-1/2" x 50-1/2" DC3895 Ocean strip. Press one 3/4" x 3" flower stem, two small leaves and one bud to the panel. Press six large leaves and one large flower to the panel. Finish the raw edges as shown.
- 12) Assemble the applique panels and the piece strip sets from Step 2, alternating them, starting with the first applique panel and working left from right to make the quilt top.
- 13) Layer and quilt as desired.
- 14) Bind the quilt as desired using the five 2-1/2" x WOF DC3894 Summer strips.

To make the dimensional flower centers

- 15) Sew one 2-1/2" x 22" DC3886 Summer strip end to end to make one circle.
- 16) Turn under one edge of the circle 1/8" and top stitch the folded edge in place.
- 17) Thread a hand sewing needle with a double thread. Using the threaded needle, tightly gather the fabric on the raw edge of the circle about 1/8" in from the edge to make a circular ruffle. Tie off the thread and cut. Make four circular ruffles.
- 18) Take one 2-1/2" x 11" DC3895 Black strip and fold it in half lengthwise, wrong sides together. Clip the fabric every 1/2" across the width of the strip stopping a 1/4" away from the folded edge. Hand gather the fabric along the folded edge to make the strip 4" in length. Sew the two ends of the strip together to make a clipped circle. Repeat to make four clipped circles.
- 19) Using your favorite method and take one 3" CX1492 Lipstick circle and make a yo-yo. Repeat to make four yo-yos.
- 20) Layer one yo-yo on top of one clipped circle and the place both on top of one circular ruffle. Top stitch around the edge of the yo-yo through all the layers. Repeat to make four dimensional flower centers total.
- 21) Attach one dimensional flower center to the center of each large flower on the finished quilt top as shown.



Zinnia Path Templates

Flower
Trace Four
DC3894 Summer

Bud
Trace Two
DC3894 Summer

Large Wing
Trace Two
CX1492 Geranium

Body
Trace One
DC3895 Black

Small Wing
Trace Two
CX1492 Lipstick

Small Leaves
Trace Four
DC3895 Black

Large Leaves
Trace Eighteen
DC3895 Black