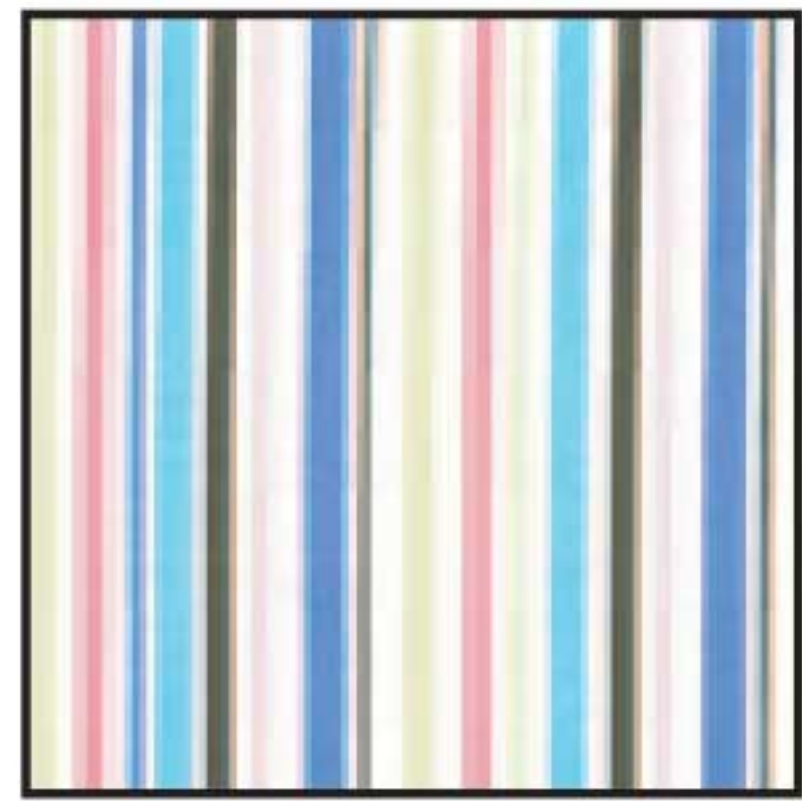
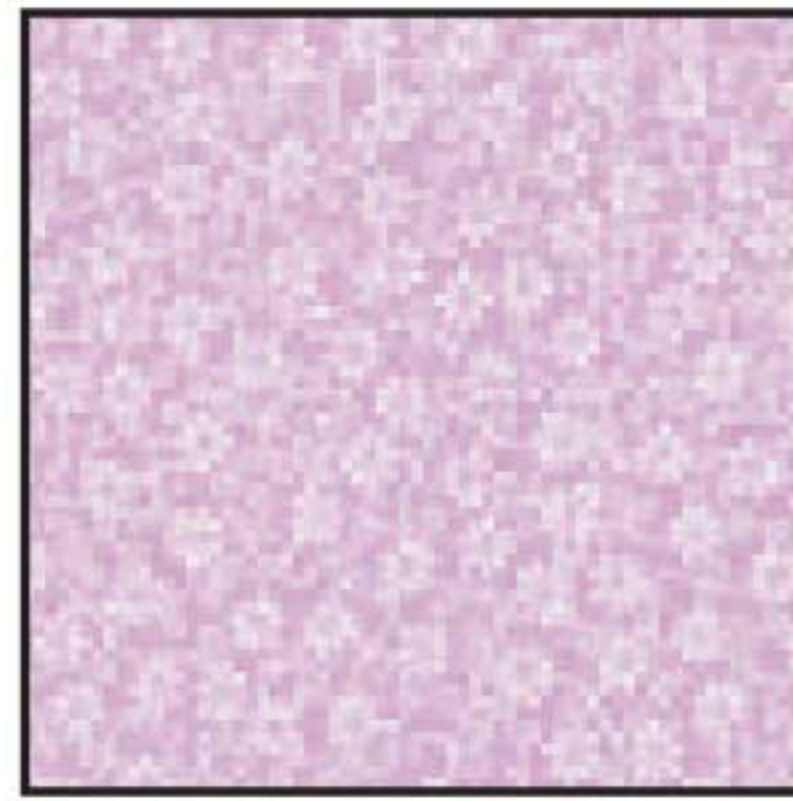


Fabric Requirements



CX0819 Candy
Mini Stripe
3/4 yard



CX2858 Peony
Daisy Vine
5/8 yard



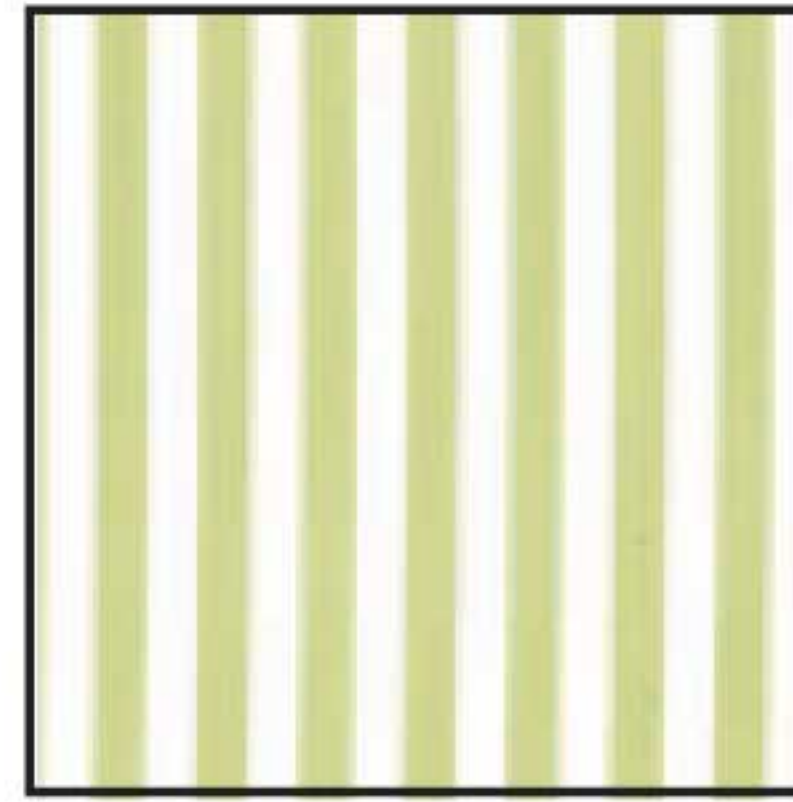
CX3328 Limeade
Dainty Damask
5/8 yard



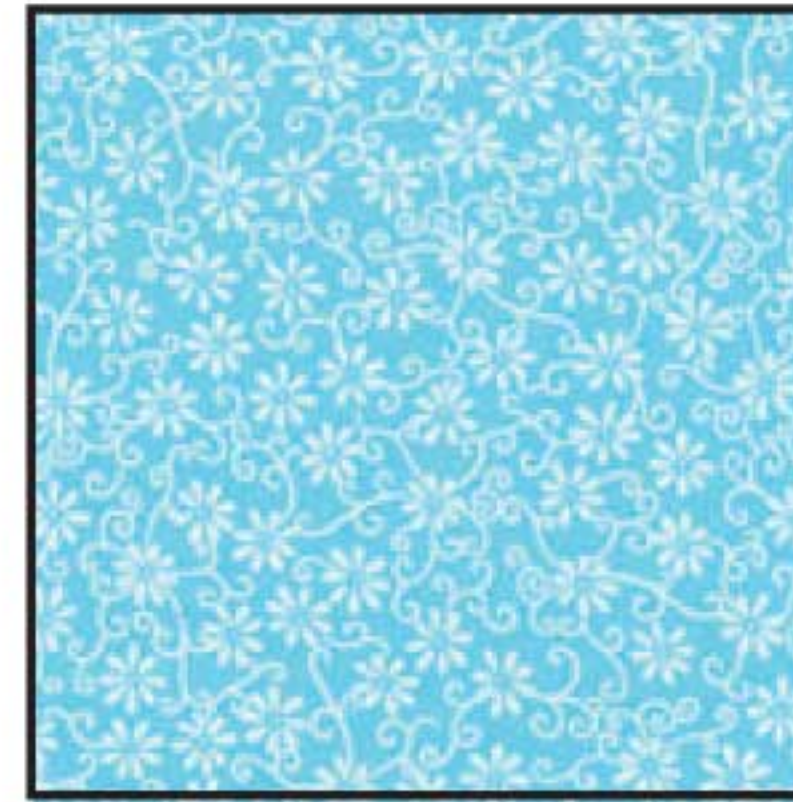
CX3484 Aqua
Queen Anne's Lace
1/4 yard



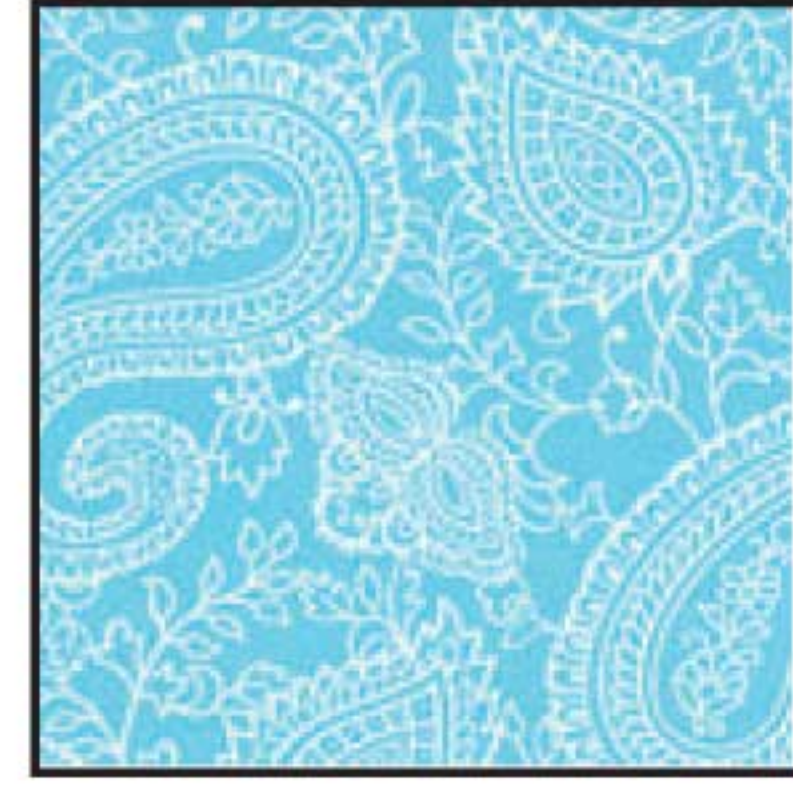
CX3195 Limeade
Polly Paisley
1/2 yard



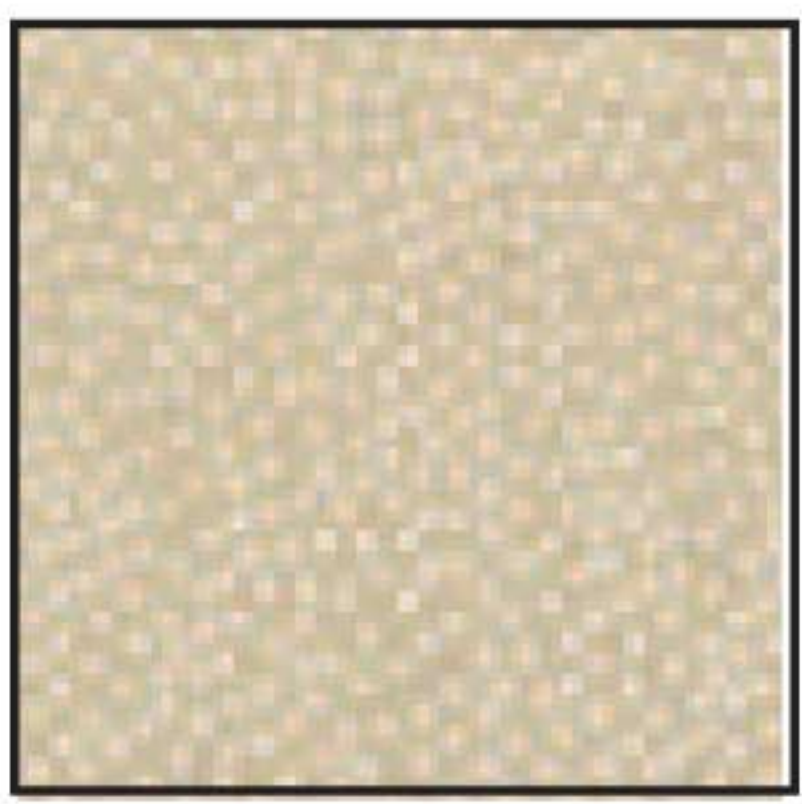
CX3584 Kiwi
Clown Stripe
Fat Quarter



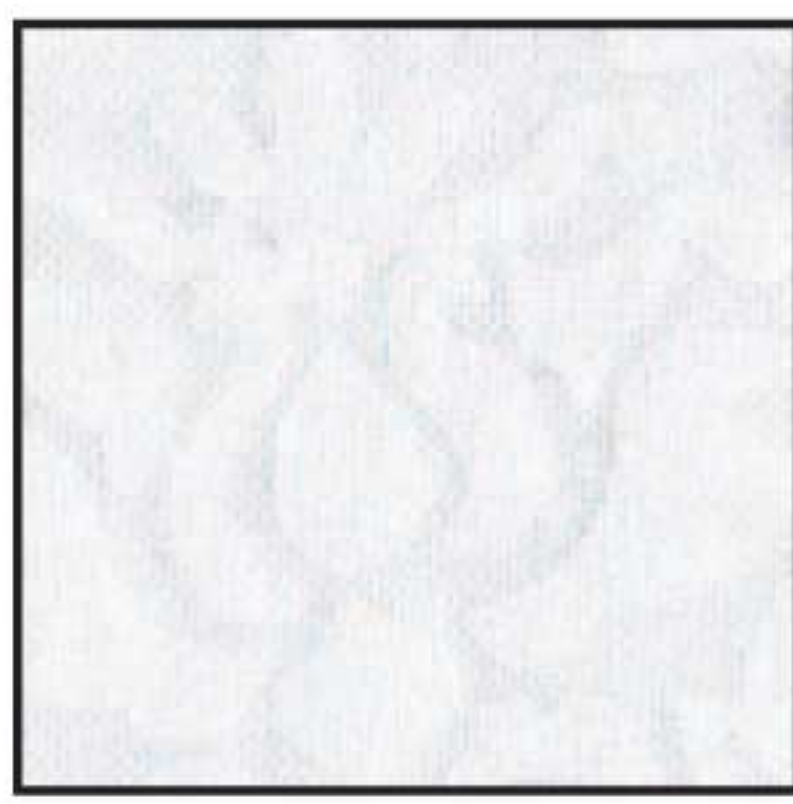
CX2858 Aqua
Daisy Vine
Fat Quarter



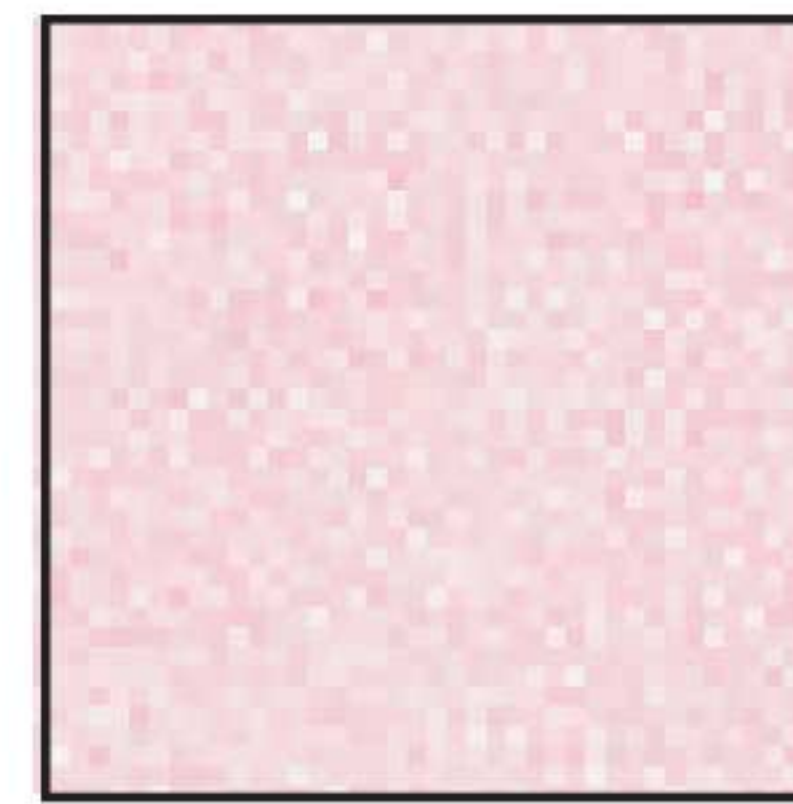
CX3483 Aqua
Lacey Paisley
Fat Quarter



CX01065 Latte
Garden Pindot
Fat Quarter



CX3328 Snow
Dainty Damask
Fat Quarter



CX1065 Girl
Garden Pindot
Fat Quarter



CX2781 Snow
Tiny Check
Fat 1/8



Clip Dots
White
Fat Eighth



CX3484 Petal
Queen Anne's Lace
Fat Eighth



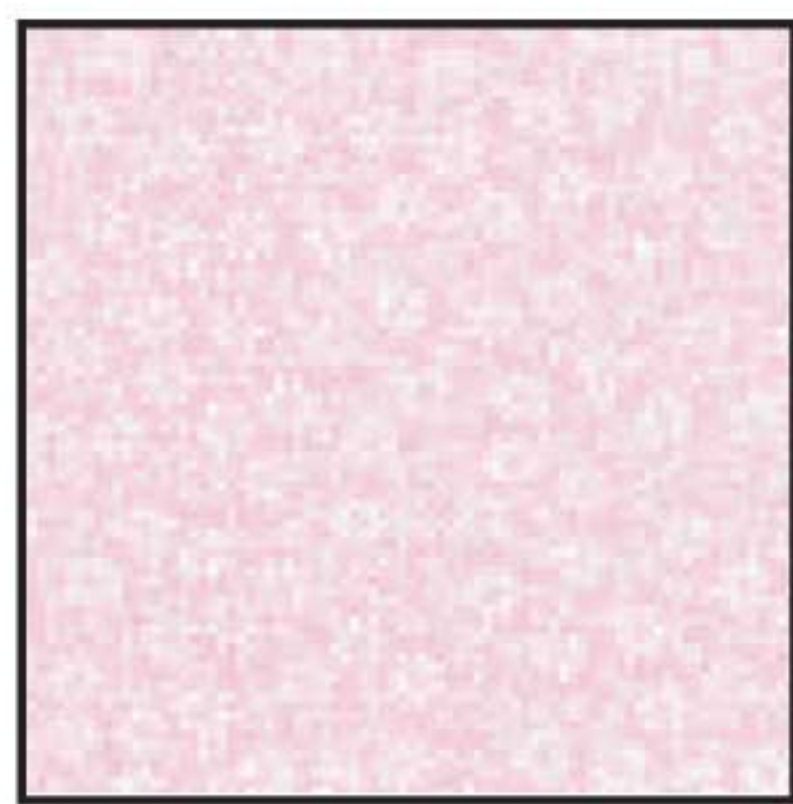
CX3483 Petal
Lacey Paisley
Fat Eighth



CX3328 Cream
Dainty Damask
Fat Eighth



EB3638 White
Embroidered Sheer
Floral Fat Eighth



CX2858 Petal
Daisy Vine
Fat Sixteenth



CX1065 Grass
Garden Pindot
Fat Sixteenth



CX1065 Snow
Garden Pindot
Fat Sixteenth

Treats

Designed by Marinda Stewart



Finished quilt is approximately 50" x 50" / Skill Level Intermediate



118 West 22nd Street 5th Floor New York, NY 10011

Tel: 212.704.0774 Fax: 212.633.0272 Email: info@michaelmillerfabrics.com

www.michaelmillerfabrics.com

Treats

Quilt designed by Marinda Stewart. Quilt measures approximately 40" x 53"

Always measure the quilt top before cutting border lengths.

Fabric	Yardage	Cutting
CX0819 Candy	3/4 yard	Cut three 2-1/2" x width of fabric (WOF) strips. Piece the strips together into two 2-1/2" x 53-1/2" strips. Cut two 2-1/2" x 36-1/2" strips. Cut four 1-1/2" x 36-1/2" strips. Cut two 1-1/2" x 25-1/2" strips Cut two 1-1/2" x 7-1/2" strips.
CX2858 Peony	5/8 yard	Cut five 2-1/4" x WOF strips for Binding. Cut three 1" x WOF strips. Piece the strips into two 1" x 49-1/2" strips. Cut two 1" x 36-1/2". See instructions to cut six candies and eight cupcake frostings.
CX3328 Limeade	5/8 yard	Cut four 7-1/2" squares, two 5-1/2" squares, one 4-1/2" x 6-1/2" strip, one 3-1/2" x 6-1/2" and one 2-1/2" x 6-1/2" strip. Cut two 3-1/2" x 5-1/2" strips and two 1-1/2" x 2-1/2" strips.
CX3484 Aqua	1/4 yard	Cut two 3" x 36-1/2" strips.
CX3195 Limeade	1/2 yard	Cut one 7-1/2" square, cut the square on one diagonal. Cut two 4-1/2" x 36-1/2" strips. See instructions to cut two ice cream scoops.
CX3584 Kiwi	Fat Quarter	Cut and piece the bais strips to make one 1-5/8" x 2 yard pieces.
CX2858 Aqua	Fat Quarter	Cut two 7-1/2" x 14-1/2" strips.
CX3483 Aqua	Fat Quarter	Cut two 7-1/2" x 10-1/2" strips.
CX1065 Latte	Fat Quarter	Cut two 3/8" x 5" strips back with fusible web for lollipop stitcks. See instructions to cut six croissants and eight cupcakes.
CX3328 Snow	Fat Quarter	Cut one 2" x 6-1/2" strips, five 1-1/2" x 2-1/2" strips and fourteen 1-1/2" square.
CX1065 Girl	Fat Quarter	Cut five 1-1/2" x 2-1/2" strips and fourteen 1-1/2" squares. See instructions to cut two soda cherries and six candies.

Fabric	Yardage	Cutting
CX2781 Snow	Fat Eighth	Cut one 1-1/2" x 16-1/2" strip, cut one 4-1/2" x 6-1/2" strip and one 1-1/2" x 16-1/2" strip.
Clipped Dot White	Fat Eighth	See instrutions to cut eighteen candy wrappers.
CX3484 Petel	Fat Eighth	Cut one 3-1/2" x 14-1/2" strip.
CX3483 Petal	Fat Eighth	Cut one 3-1/2" x 10-1/2" strip.
CX3328 Cream	Fat Eighth	Cut one 7-1/2" square. Cut the square on one diagonal. See instructions to cut two ice cream scoops.
EB3638 White	Fat Eighth	Cut one 7-1/2" square.
CX2858 Petal	Fat Sixteenth	Cut one 3" x 6-1/2" strips.
CX1065 Grass	Fat Sixteenth	See instructions to cut six candies.
CX1065 Snow	Fat Sixteenth	See instructions to cut two soda bases and four straws.

You will also need:

Fusible Web
1-5/8 yards for backing
45" x 60" batting
3 yards of 1-3/8" wide Jumbo Rick Rack
1/2 yard of 1-1/2" wide Cotton Lace
4 yards of 1/4" cotton cording
Seventeen 5/8" white pom poms
Threads to match
Scissors, straight pins, acrylic ruler, mat, rotary cutter

Optional:

Non-stick applique pressing sheet
Fabric Glue or Hot Glue Gun
Zipper Foot Attachment

Disclaimers

• This pattern is provided as a courtesy to quilt stores, catalogs and quilters. Michael Miller Fabrics, LLC is not responsible for the accuracy of any kits packaged to accompany this pattern. Please direct any inquires to the kit maker.

• Yardage requirements for this pattern may allow for excess yardage to accommodate specific placement of motifs or to allow for any fussy-cutting to achieve the finished quilt design.

• While every attempt has been made to give accurate measurements, yardage requirements and construction directions, this does not allow for personal variations in measuring, cutting and or sewing. the enclosed directions were used in the construction of the original quilt.

Disclaimers

- This pattern is provided as a courtesy to quilt stores, catalogs and quilters. Michael Miller Fabrics, LLC is not responsible for the accuracy of any kits packaged to accompany this pattern. Please direct any inquires to the kit maker.
- Yardage requirements for this pattern may allow for excess yardage to accommodate specific placement of motifs or to allow for any fussy-cutting to achieve the finished quilt design.
- While every attempt has been made to give accurate measurements, yardage requirements and construction directions, this does not allow for personal variations in measuring, cutting and or sewing. the enclosed directions were used in the construction of the original quilt.

Assembly Instructions:

Cake Center Panel

- 01) Cut three pieces of White Rick Rack, one 6-1/2" long, one 10-1/2" long and one 14-1/2" long. Center the 6-1/2" piece of rick rack on top of one 3" x 6-1/2" CX2858 Petal. Top stitch the rick rack in place to make the pink section of the cake's top tier.
- 02) Repeat Step 1 to top stitch the 10-1/2" rick rack to the center of the 3-1/2" x 10-1/2" CX3483 Petal strip to make the pink section of the middle tier.
- 03) Repeat Step 1 to top stitch the 14-1/2" rick rack to the center of the 3-1/2" x 14-1/2" CX3484 Petal strip to make pink section of the bottom tier.
- 04) To make the Top Tier Section of the cake, sew one 2" x 6-1/2" CX3328 snow strip to the bottom of the 3" x 6-1/2" CX2858 Petal strip from Step 1. Sew one 3-1/2" x 6-1/2" CX2858 Limeade strip to the top of the CX2858 Petal strip to make the center section.
- 05) Sew one 7-1/2" CX2858 Limeade square to each end of the center section complete the top tier section.
- 06) To make the Middle Tier Section, starting with one 1-1/2" x 2-1/2" CX3328 Snow strip, sew together five 1-1/2" x 2-1/2" CX3328 Snow strips and five 1-1/2" x 2-1/2" CX1065 Girl strips, alternating them to make one 2-1/2" x 10-1/2" stripe piece.
- 07) Sew the 2-1/2" x 10-1/2" Stripe piece to the bottom of the 3-1/2" x 10-1/2" CX3483 petal from Step 2. to make the center section
- 08) Sew one 5-1/2" CX3328 Limeade square to each end of the center section to complete the Middle Tier Section.
- 09) To make the Bottom Tier Section, Sew together fourteen CX1065 Girl and fourteen CX3328 Snow squares to make one 2-1/2" x 14-1/2" Checkerboard strip.
- 10) Sew the Checkerboard strip to the bottom of the 3-1/2" x 14-1/2" CX3483 Petal strip from Step 3 to make the center section.
- 11) Sew one 3-1/2" x 5-1/2" CX3328 Limeade strip to each side of the center section to complete the Bottom Tier Section.
- 12) To make the top of the Cake Plate, cut one 16-1/2" strip of cotton lace. Lay the lace on top of the 1-1/2" x 16-1/2" CX2867 Snow and top stitch the lace in place 1/4" from the top of the lace.
- 13) Sew one 1-1/2" x 2-1/2" CX3328 Limeade strip to each end of the lace covered strip to complete the Cake Plate Section.

- 14) To make the cake stand section, fold the 4-1/2" x 6-1/2" CX2867 snow piece in half to make one 3-1/4" x 4-1/2" piece. Refer to the quilt photo and freehand cut the cake stand base as shown.
- 15) Top stitch the cake stand base to the center of the 4-1/2" x 6-1/2" CX3328 Limeade piece to make the cake stand.
- 16) Sew one 1-1/2" x 6-1/2" CX2867 snow strip to the bottom of the cake stand. Sew one 2-1/2" x 6-1/2" CX3328 Limeade strip to the bottom of the CX2867 Snow strip to complete the center section.
- 17) Sew one 7-1/2" CX3328 Limeade square to side of the center section to complete the cake stand section.
- 18) Starting with the Top Cake Tier, sew the sections together in the following order:
Top Tier, Middle tier, Bottom Tier, Cake Plate Section, Cake Stand Section.
- 19) Sew one 1-1/2" x 25-1/2" CX0819 strip to each side of the Cake Section.
- 20) To Make the Fountain Soda and Lollipop Backgrounds, sew one 7-1/2" x 10-1/2" CX3483Aqua to the top of one 1-1/2" x 7-1/2" CX 0819 strip. Sew one 7-1/2" x 14-1/2" strip to the bottom of the 1-1/2" x 7-1/2" CX0819 strip to make one background section. Repeat to make a second background section.
- 21) Refer to the quilt photo and press one 3/8" x 5" CX1065 Latte strips to each 7-1/2" x 10-1/2" CX3483 Aqua piece for the lollipop stick. Machine applique the raw edges. The lollipops are made at the end.
- 22) To make the sodas, Sew one CX3328 Cream triangle and one CX3195 Limeade triangle together to create a 7-1/2" half-square triangles.
- 23) Layer the 7-1/2" EB3638 fabric on top of the 7-1/2" half-square triangle. Cut the layer square in half vertically.
- 24) Using the soda glass pattern, cut out one soda glass from each half of the layered fabrics. Machine applique the soda glasses to the center of each 7-1/2" x 14-1/2" CX2858 Aqua piece.
- 25) Following the manufacturing instructions, trace the listed number of templates onto the paper side of the fusible web. Roughly cut out each shape outside the drawn line. Press each shape to the back side of the listed fabrics. Cut out each shape on the drawn line.
- 26) Refer to the quilt photo and press the Soda Glass Bottoms, Straws and Ice Cream scoops in place to complete the two soda glasses. Finish the raw edges of the appliques with a decorative stitch such as a satin or buttonhole stitch.
- 27) Sew one Lollipop/Soda Glass panel to each side of the Cake Panel to make the quilt top.
- 28) Sew one 1-1/2" x 36-1/2" CX0819 strip to the top and bottom of the quilt top.
- 29) Refer to the quilt photo and evenly space the six Croissants on one 4-1/2" x 36-1/2" CX3195 Limeade strip. Press them in place and finish the raw edges.
- 30) Sew the croissant strip to the bottom of the quilt top.
- 31) Refer to the quilt photo and evenly space eight Cupcakes and Frosting pieces on top of the remaining 4-1/2" x 36-1/2" CX3195 Limeade strip. Press in place and finish the edges.
- 32) Sew the cupcake strip to the top of the quilt top.

- 33) Sew one 1-1/2" x 36-1/2" CX0819 strip to the top and bottom of the quilt top.
- 34) Using a non-stick applique pressing sheet, position one Candy piece behind each candy wrapper and press them together. Repeat to make eighteen piece of candy with the wrapper pressed on top.
- 35) Refer to the quilt photo and evenly space nine pieces of candy on top of one 3" x 36-1/2" CX3484 Aqua strip. Press in place and finish the raw edges. Repeat to make the second candy strip.
- 36) Sew the candy strips to the top and bottom of the quilt top.
- 37) Sew one 1-1/2" x 36-1/2" CX0819 strip to the top and bottom of the quilt top.
- 38) Cut two pieces of rick rack 36-1/2" long. Center each piece of rick rack on top of a 2-1/2" x 36-1/2" CX3328 Limeade strip. Top stitch the rick rack in place.
- 39) Sew the strip to the top and bottom of the quilt top.
- 40) Sew one 1" x 36-1/2" CX2858 Peony strip to the top and bottom of the quilt top. Sew one 1" x 49-1/2" CX2858 Peony strip to each side of the quilt top.
- 41) Sew one 2-1/2" x 37-1/2" CX0819 strip to the top and bottom of the quilt top. Sew one 2-1/2" x 53-1/2" strip to each side of the quilt top.
- 42) Layer, quilt and bind as desired.
- 43) For the embellishments- Sew or glue one pom pom to the top of each cupcake, and the top and bottom tiers of the cake as shown.
- 44) For the Lollipops, Mark the middle of the 4 yard piece of cotton cording. Fold the CX3584 Kiwi bias strip right sides together over the cording. Starting at the middle mark, sew across the cording and snugly along the cording using the zipper foot. Trim the seam to a scant 1/8"
- 45) Carefully pull the stitched bias over the uncovered cording. Cut the cord at the center seam. Divide the covered cording in half.
- 46) Using fabric glue, a hot glue gun or needle and thread, starting at one end of the cording, coil the cording into a circle to make one lollipop. Tuck under the raw edge at the end. Make two lollipops. Attach each lollipop to the top of the lollipop sticks by hand sewing or gluing as desired.