

## Fabric Requirements



**CX3651 Black  
Tiger Lily**  
1-1/4 yards



**CX0274 Pink  
Giddy Dot**  
1/4 yard



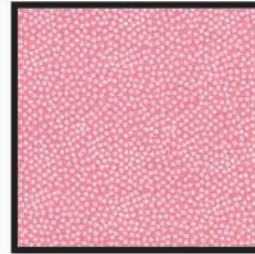
**Jet Black**  
1/2 yard



**CX1065 Girl  
Garden Pindot**  
3/8 yard



**CX0886 Orchid  
Crib Check**  
3/8 yard



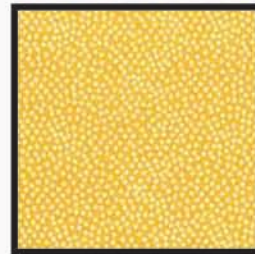
**CX1065 Blossom  
Garden Pindot**  
3/8 yard



**K1034  
Krystal**  
3/8 yard



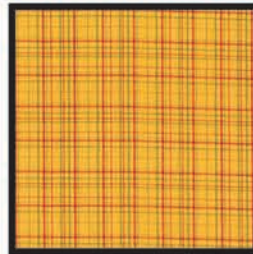
**K1023  
Krystal**  
3/8 yard



**CX1065 Banana  
Garden Pindot**  
3/8 yard



**CX0274 Yellow  
Giddy Dot**  
3/8 yard



**CX3652 Yellow  
Pretty Plaid**  
3/8 yard

## Tiger Lily



Quilt measures approximately 50" x 50" Quilt designed by Marinda Stewart



118 West 22nd Street 5th Floor New York, NY 10011  
Tel: 212-704-0774 Fax 212-633-0272 Email: [info@michaelmillerfabrics.com](mailto:info@michaelmillerfabrics.com)  
[www.michaelmillerfabrics.com](http://www.michaelmillerfabrics.com)

# Tiger Lily

Quilt designed by Marinda Stewart. Quilt measures approximately 50" x 50

## Always measure the quilt top before cutting border lengths.

<b>Fabric:</b>	<b>Yardage:</b>	<b>Cutting:</b>
CX1065 Girl (P1)	3/8 yard	Cut eight 5-1/2" squares. See instructions for appliqué.
CX0886 Orchid (P2)	3/8 yard	Cut eight 5-1/2" squares. See instructions for appliqué.
CX1065 Blossom (P3)	3/8 yard	Cut eight 5-1/2" squares. See instructions for appliqué.
K1034 (P4)	3/8 yard	Cut eight 5-1/2" squares. See instructions for appliqué.
K1023 (Y1)	3/8 yard	Cut eight 5-1/2" squares. See instructions for appliqué.
CX1065 Banana (Y2)	3/8 yard	Cut eight 5-1/2" squares. See instructions for appliqué.
CX0274 Yellow (Y3)	3/8 yard	Cut eight 5-1/2" squares. See instructions for appliqué.
CX3652 Yellow (Y4)	3/8 yard	Cut eight 5-1/2" squares. See instructions for appliqué.
CX0274 Pink	1/4 yard	Cut two 1-1/2" x 40-1/2" strips. Cut two 1-1/2" x 42-1/2" strips.
CX3651 Black	1-1/4 yard	Cut two 4-1/2" x 42-1/2" strips. Cut three 4-1/2" x Width of Fabric (WOF), piece, cut two 4-1/2" x 50-1/2" strips. See appliqué instructions.
Jet Black	1/2 yard	Cut six 2-1/4" x WOF strips for binding.

### You will also need:

Fusible web  
55" x 55" backing  
55" x 55" batting  
Threads to match  
Scissors, straight pins, acrylic ruler, mat, rotary cutter

### Disclaimers

- This pattern is provided as a courtesy to quilt stores, catalogs and quilters. Michael Miller Fabrics, LLC is not responsible for the accuracy of any kits packaged to accompany this pattern. Please direct any inquiries to the kit maker.
- Yardage requirements for this pattern may allow for excess yardage to accommodate specific placement of motifs or to allow for any fussy-cutting to achieve the finished quilt design.
- While every attempt has been made to give accurate measurements, yardage requirements and construction directions, this does not allow for personal variations in measuring, cutting and or sewing. the enclosed directions were used in the construction of the original quilt.

### Assembly Instructions:

1. Following the manufacturer's instructions, trace sixty-four petal templates onto the paper side of the fusible web. Roughly cut out each shape about a 1/4" outside the drawn lines.
2. Press nine petal templates onto each CX1065 Girl, CX0886 Orchid, CX1065 Blossom and K1034. Press seven petal templates from K1023, CX1065 Banana, CX0274 Yellow and CX3652 Yellow. Cut out each petal on the drawn lines.
3. Following the quilt layout on page 2, and the fabric number in () the fabric requirements. press each petal onto the listed 5-1/2" square. Finish the raw edges of each petal with a decorative stitch such as a satin stitch or buttonhole stitch.
4. Referring to the quilt layout, sew four 5-1/2" petal blocks together to make sixteen 10-1/2" squares.
5. Referring to the quilt layout, sew four 10-1/2" squares together to make one row. Make four rows total.
6. Sew the four rows together to make a 40-1/2 square quilt top.
7. Sew one 1-1/2" x 40-1/2" CX0274 Pink strip to the top of the quilt top. Sew one 1-1/2" x 40-1/2" CX0274 Pink strip to the bottom of the quilt top. Sew one 1-1/2" x 42-1/2" CX0274 Pink strip to each side of the quilt top.
8. Sew one 4-1/2" x 42-1/2" CX3651 Black strip to the top of the quilt top. Sew one 4-1/2" x 42-1/2" CX3651 Black strip to the bottom of the quilt top. Sew one 4-1/2" x 50-1/2" CX3651 Black strip to each side of the quilt.
9. From the remaining CX3651 Black, roughly cut out assorted flowers approximately a 1/4" outside the printed lines. Following the manufacturer's instructions, press a piece of fusible web to the back side of each flower. Fussy-cut the flowers on the printed lines.
10. Refer to the quilt photo for placement and arrange the assorted flowers on the quilt top. Press them in place. Finish the raw edges of the flowers with a decorative stitch such as a satin stitch or buttonhole stitch.
11. Layer, quilt and bind as desired.

# Tiger Lily Quilt Layout

