

## FABRIC REQUIREMENTS



DC3872 Sunny - Sunshine Fairies Panel Full Panel



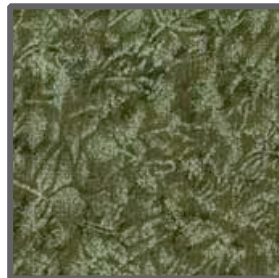
DC3932 Sunny  
Sunshine  
Full Panel



CM0376 Celadon  
Fairy Frost  
3/4 yard



CM0376 Butter  
Fairy Frost  
7/8 yard



CM0376 Asparagus  
Fairy Frost  
1/6 yard

# Sunshine Fairy Panel



Size: Approximately 49"W x 50"H

Quilt designed by Marinda Stewart  
Skill Level: Beginner



118 West 22nd Street 5th Floor New York, NY 10011  
Tel: 212.704.0774 Fax: 212. 633. 0272 email: info@michaelmillerfabrics.com

www.michaelmillerfabrics.com

Backing - 55" x 55" and Batting - 55" x 55" required

## Materials

Fabric	Yardage	Cutting
Flower Fairies Sunny DC3932 Sunshine	2/3 yard  (1 repeat or amount needed to get one complete repeat motif)	Trim panel 1/4 outside inside dark frame (23 3/8" x 43" approx.)
Sunshine Fairies Panel DC3872 Sunny	2/3 yard  (1 repeat or amount needed to get one complete repeat motif)	Cut out (8) fairies leaving 1/4 seam
Fairy Frost CM0376 Celadon	3/4 yard	Cut (2) 1 1/2" x 43" Cut (2) 1 1/2" x 25 3/8" Cut (16) 1" x 7" Cut (16) 1" x 10" Cut (5) Width Of Fabric for binding purposes
Fairy Frost CM0376 Butter	7/8 yard	Cut (2) 2 1/2" x 26 3/8" Cut (10) 2 1/2" x 8" Cut (4) 2 1/2" x 50" - piece as needed
Fairy Frost CM0376 Asparagus	1/6 yard	Cut (2) 1" x 25 3/8" Cut (2) 1" x 46"- piece as needed

### Additional Materials:

55" x 55" Backing, 55" x 55" Batting, Threads to match, Straight Pins, Scissors, Acrylic Ruler, Rotary Cutter, and Mat.

### Disclaimers

This pattern is provided as a courtesy to quilt stores, catalogs, and quilters. Michael Miller Fabrics, LLC is not responsible for the accuracy of any kits packaged to accompany this pattern. Please direct any inquiries to the kit maker.

Yardage requirements for this pattern may allow for excess yardage to accommodate specific placement of motifs or to allow for any fussy-cutting to achieve the finished quilt design.

While every attempt has been made to give accurate measurements, yardage requirements, and construction directions; this does not allow personal variations in measuring, cutting, and or sewing. The enclosed directions were used in the construction of the original quilt.

### Directions

- Sew 1 1/2" x 43" celadon to each side of panel DC3932.  
Sew 1 1/2" x 25 3/8" celadon to the top and bottom.
- Sew 1" x 25 3/8" asparagus to the top and bottom.  
Sew 1" x 46" asparagus to each side of the quilt.
- Sew 2 1/2" x 26 3/8" butter to the top and bottom.  
Sew one 2 1/2" x 50" butter strip to each side. Set aside.
- Sew one 1" x 7" celadon strip to the top and bottom of each fairy rectangle.  
Sew one 1" x 10" celadon strip to each side of each fairy rectangle.
- Beginning and ending with a 2 1/2" x 8" butter strip join four fairy rectangles together in a vertical 50" strip. Make two.  
Sew one to each side of the quilt.
- Sew remaining 2 1/2" x 50" butter strips to each side of quilt.
- Layer backing, batting and quilt top. Baste.
- Quilt as desired.
- Piece celadon binding strips as needed. Bind quilt to finish.