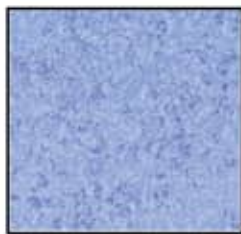


Fabric Requirements



CM0376 Wisteria
Fairy Frost
1/2 yard



CM0376 Ceil
Fairy Frost
1/2 yard



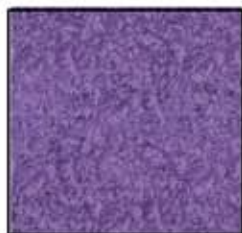
CM0376 Hyacinth
Fairy Frost
1/4 yard



DC3931 Peri
Dainty Daisy
1/2 yard



CX3878 Lilac
Blossoming Bouquet
1/2 yard



CM0376 Grape
Fairy Frost
1/4 yard



DM3881 Peri
Periwinkle Fairies
2/3 yard



*DC3883 Peri
Periwinkle Fairies Panel
Full Panel

Backing and Batting
55" x 55"



PERIWINKLE FAIRIES

Designed by Marinda Stewart



Quilt measures approx 50" x 50"



118 West 22nd Street 5th Floor New York, NY 10011
Tel: 212.704.0774 Fax: 212.633.0272 Email: info@michaelmillerfabrics.com
www.michaelmillerfabrics.com

Periwinkle Fairies

Quilt designed by Marinda Stewart. Quilt measures approximately 50" x 50"
Always measure the quilt top before cutting border lengths.

Fabric:	Yardage:	Cutting
CM0376 Wisteria	1/2 yard	Cut fifteen 1-7/8" x 9-1/2" strips. Cut sixteen 1-7/8" x 7" strips.
DC3883 Periwinkle	2/3 yard*	Cut twelve fairies blocks, 7" x 9-1/2" each. Cut twenty small flower squares with a 1/4" seam allowance.
CM0376 Ceil	1/2 yard	Cut two 1" x 32-3/4" strips. Cut two 1" x 33-3/4" strips. Cut five 2-1/4" x Width of Fabric (WOF) strips for binding.**
CM0376 Hyacinth	1/4 yard	Cut two 1-7/8" x 33-3/4" strips. Cut two 1-7/8" x 36-1/2" strips.
DC3931 Periwinkle	1/2 yard	Cut twenty-four 4" squares.
CX3878 Lilac	1/2 yard	Cut twenty-eight 4" squares.
CM0376 Grape	1/4 yard	Cut two 1-1/2" x 42-1/2" strips and two 1-1/2" x 44-1/2" strips.**
DM3881 Periwinkle	2/3 yard	Cut two 3-1/2" x 44-1/2" strips and two 3-1/2" x 50-1/2" strips.**

* Or amount needed to get twelve fairy blocks.

** Piece as needed to achieve proper length for borders and binding.

You will also need:

54" x 54" backing

54" X 54" batting

Threads to match

Scissors, straight pins, acrylic ruler, mat, rotary cutter

Disclaimers

• This pattern is provided as a courtesy to quilt stores, catalogs and quilters. Michael Miller Fabrics, LLC is not responsible for the accuracy of any kits packaged to accompany this pattern. Please direct any inquires to the kit maker.

• Yardage requirements for this pattern may allow for excess yardage to accommodate specific placement of motifs or to allow for any fussy-cutting to achieve the finished quilt design.

• While every attempt has been made to give accurate measurements, yardage requirements and construction directions, this does not allow for personal variations in measuring, cutting and or sewing. the enclosed directions were used in the construction of the original quilt.

Assembly Instructions:

- 1) To make a sashing row, Starting and ending with a small flower block from DC3883, sew four squares and three 1-7/8" x 9-1/2" CM0376 Wisteria pieces into one strip to make one row. Make five rows total.
- 2) Beginning and ending with a 1-7/8" x 7" strip CM0376 Wisteria, sew together three fairy rectangles and four Wisteria strips to make a vertical row. Make four rows.
- 3) Beginning and ending with a sashing row, join the fairy rows together with a sashing row in between each fairy row as shown to complete the quilt top.
- 4) Sew one 1" x 32-3/4" CM0376 Ceil strip to the top and bottom of the quilt top. Sew one 1" x 33-3/4" CM0376 Ceil strip to each side of the quilt top.
- 5) Sew one 1-7/8" x 33-3/4" CM0376 Hyacinth strip to the top and bottom of the quilt. Sew one 1-7/8" x 36-1/2" CM0376 Hyacinth strip to each side of the quilt.
- 6) Place one 4" DC3931 Periwinkle square and one 4" CX3878 lilac square with right sides together. Draw a line diagonally from corner to corner (fig. 1). Stitch 1/4" on each side of the drawn line (fig. 1). Cut apart along the diagonal line (fig. 2). Press open to make two right triangle squares (fig. 3). Trim each square to an accurate 3-1/2". Repeat to make forty-eight total right triangle squares.
- 7) Refer to the quilt photo to sew twelve right triangle squares together in a zig-zag pattern as shown to make one row. Make four rows total.
- 8) Sew one right triangle row to the top and one to the bottom of the quilt top.
- 9) Sew one 3-1/2" CM3878 lilac square to each end of the remaining right triangle rows. Sew one completed row to each side of the quilt.
- 10) Sew one 1-1/2" x 42-1/2" CM0376 Grape strip to the top and bottom of the quilt. Sew one 1-1/2" x 44-1/2" CM0376 Grape strip to each side of the quilt.
- 11) Sew one 3-1/2" x 44-1/2" DM3881 Periwinkle strip to the top and bottom of the quilt. Sew one 3-1/2" x 50-1/2" DM3881 Periwinkle strip to each side of the quilt.
- 12) Layer, quilt and bind as desired.

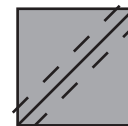


FIG. 1

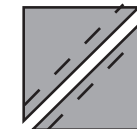


FIG. 2

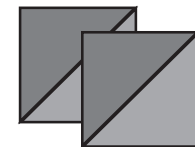


FIG. 3