

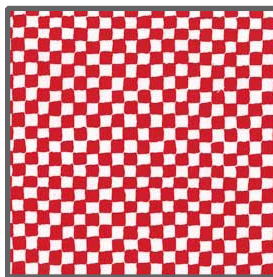
**FABRIC REQUIREMENTS**



**CX4095 - White  
High as a Kite  
1 1/4 yard**



**CX1065-Red  
Garden Pindot  
1/2 yard**



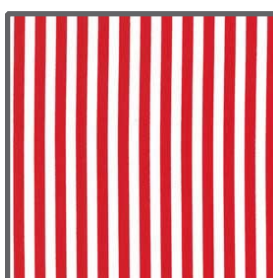
**CX0482 - Red  
Clown Check  
1/4 yard**



**CX2490 - Marine  
Dumb Dot  
7/8 yard**



**CX3744 - Navy  
Quarter Dot  
3/8 yard**



**CX3584 - Red  
Clown Stripe  
1/4 yard**



**CX3745 - Navy  
Two by Two Stripe  
5/8 yard**

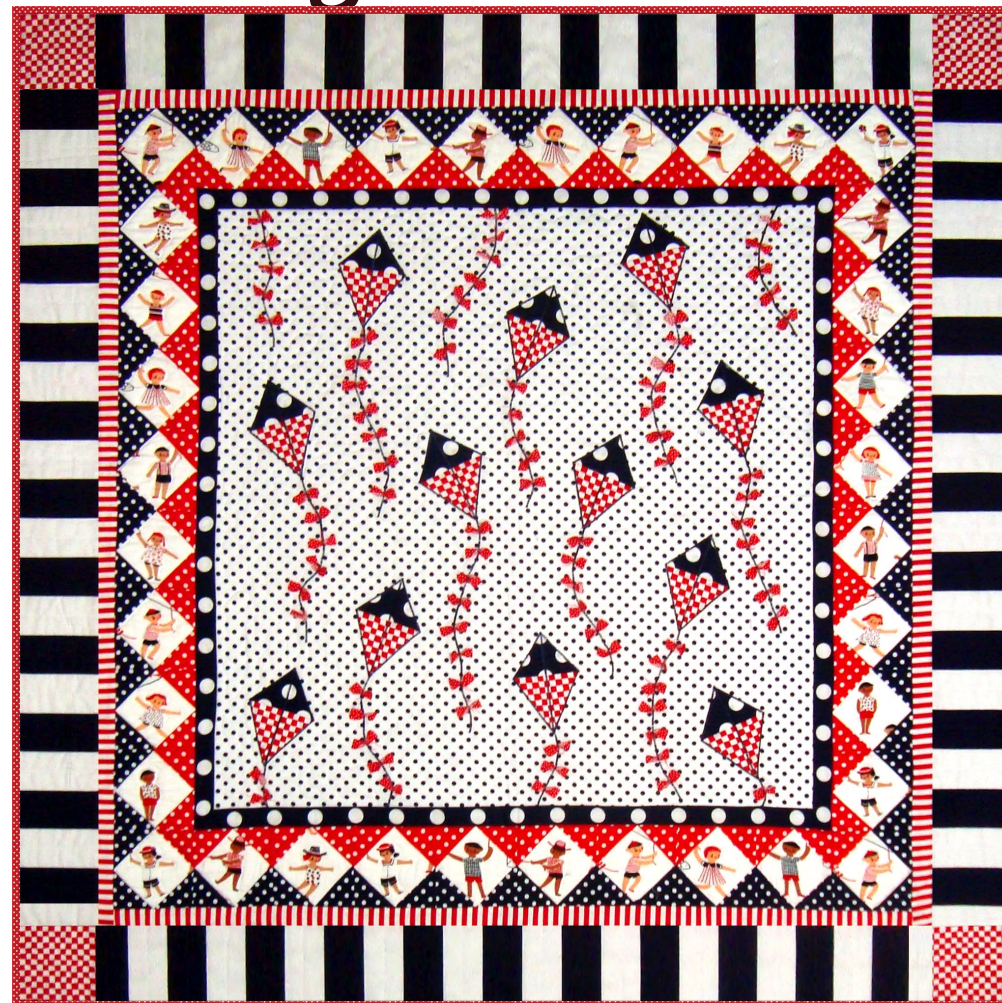


**CX2490 - Navy  
Dumb Dot  
1/2 yard**



**CX2490-Red  
Dumb Dot  
1/2 yard**

# High as a Kite



Size: Approximately 50"W x 50"H

Quilt designed by Marinda Stewart  
Skill Level: Confident Beginner



118 West 22nd Street 5th Floor New York, NY 10011  
Tel: 212.704.0774 Fax: 212. 633. 0272 email: info@michaelmillerfabrics.com

www.michaelmillerfabrics.com

Backing - 55" x 55" and Batting - 55" x 55"

## "High as a Kite"

Quilt by Marinda Stewart

Size: 50" wide x 50" high - Skill Level: Confident Beginner

### Materials

Fabric	Yardage	Cutting
High as a Kite CX4095 White	1 1/4 yard	* (36) 4/12" fussy cut squares
Dumb Dot CX2490 Marine	7/8 yard	(1) 30 1/2" square
Two by Two Stripe CX3745 Navy	5/8 yard	(4) 4 1/2" x 42 1/2"
Dumb Dot CX2490 Red	1/2 yard	(68) 2 1/2" squares
Dumb Dot CX2490 Navy	1/2 yard	(76) 2 1/2" squares
Garden Pindot CX1065 Red	1/2 yard	(81) 1/2" x 1 1/2" (5) 2 1/2" x W.O.F. for binding
Quarter Dot CX3744 Navy	3/8 yard	* (2) 1 1/2" x 30 1/2" * (2) 1 1/2" x 32 1/2" (1) 2 1/2" x W.O.F.
Clown Stripe CX3584 Red	1/4 yard	(2) 1 1/2" x 40 1/2" (2) 1 1/2" x 42 1/2"
Clown Check CX0482 Red	1/4 yard	(4) 4 1/2" squares (1) 3 1/4" x W.O.F.
* center each on a motif and/or dot		

### Additional Materials:

55" x 55" Backing, 55" x 55" Batting, Threads to match, Straight Pins, Scissors, Acrylic Ruler, Rotary Cutter, and Mat.

### Disclaimers

This pattern is provided as a courtesy to quilt stores, catalogs, and quilters. Michael Miller Fabrics, LLC is not responsible for the accuracy of any kits packaged to accompany this pattern. Please direct any inquiries to the kit maker.

Yardage requirements for this pattern may allow for excess yardage to accommodate specific placement of motifs or to allow for any fussy-cutting to achieve the finished quilt design.

While every attempt has been made to give accurate measurements, yardage requirements, and construction directions; this does not allow personal variations in measuring, cutting, and or sewing. The enclosed directions were used in the construction of the original quilt.

### Directions

1. Sew CX0482 3 1/4" x W.O.F. strip to CX3744 2 1/2" x W.O.F. strip. Cut into (12) 3 1/2" wide pieces. For one kite, fold 3 1/2" piece vertically in half. Using the seam as a guide, cut the fabric from the seam raw edge to the fold on both the blue and red fabrics to make a kite shape. Make (12).
2. Refer to photo for placement. Scatter kites across CX2490 Marine 30 1/2" squares as shown. Machine applique in place.
3. For the kite tails, take one CX1065 1/2" x 1 1/2" piece. Twist twice in the middle. Pin in place underneath the kites as shown. Use as many tails as desired on each kite up to (7). Meander the placement of each tail as shown. Machine satin stitch from the base of the kite through the tails to finish each kite. There are three kite tails at the top of the quilt without kites to balance the design.
4. Sew one CX3744 30 1/2" piece to the top and bottom of the quilt. Sew one CX3744 32 1/2" piece to each side. Set aside.
5. For pieced border, for one block sew one 2 1/2" square diagonally from one corner to the other on each corner of a CX4095 4 1/2" square. Sew one square at a time, press open. Trim excess from the back. Move to the next corner. Repeat until all four corners are done. Make (8) squares with CX2490 Red on the left side, (8) squares with CX2490 Red on the right side, (8) squares with CX2490 Red on the top, and (8) squares with CX2490 Red on the bottom. Sew one CX2490 Red corner to the inside corner of each remaining four cornerstone squares. Sew CX2490 Navy squares to all remaining corners to finish. Make (36) blocks total.
6. Make (4) rows of eight blocks each. Sew together all of the left side blocks vertically. Repeat for the right side. Do the same for the top and bottom rows sewing the blocks together horizontally. Keep the reds and blues aligned. Sew the top and bottom rows to the quilt top with the red edge to the inside. Add cornerstone block to the top and bottom of each side row maintaining the color pattern. Sew each row to each side as shown.

7. Sew one CX3584 40 1/2" piece to the top and bottom of the quilt. Sew one CX3584 42 1/2" piece to each side of the quilt.
8. Sew one CX3745 42 1/2" piece to the top and bottom of the quilt. Sew one CX0482 4 1/2" piece to each end of the two remaining CX3745 42 1/2" pieces. Sew each strip to one side of the quilt.
9. Layer backing, batting and quilt top. Baste.
10. Quilt as desired.
11. Piece CX1065 as needed for binding. Bind all edges to finish.