

# FABRIC REQUIREMENTS

# Handy Gnomes



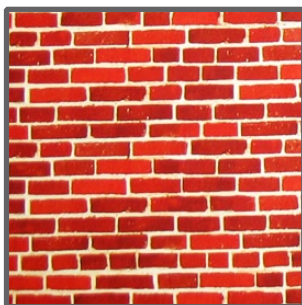
**DC4245 Multi Handy Gnomes**  
1 1/4 yard



**CX4248 Black Doors & Windows**  
1 yard



**CX2932 Gray Just Rocks**  
1/4 yard



**CX4247 Rust Bricks**  
Fat 1/4



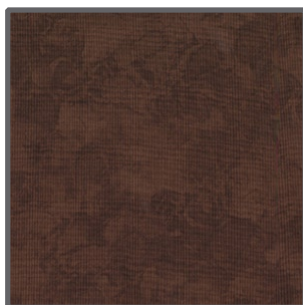
**CX4251 Rust Roof Tiles**  
3" x 15" piece



**DC4015 Green Lawn**  
3/8 yard



**DC4172 Green Summer Fern**  
1/2 yard



**K2214 Krystal**  
5/8 yard



Size: Approximately 42"W x 42"H

Quilt designed by **Marinda Stewart**  
Skill Level: Confident Beginner



**45" x 45" Backing and Batting**

118 West 22nd Street 5th Floor New York, NY 10011  
Tel: 212.704.0774 Fax: 212. 633. 0272 email: info@michaelmillerfabrics.com

www.michaelmillerfabrics.com

**"Handy Gnomes"**  
Quilt by Marinda Stewart

Size: Approximately 42"W x 42"H - Skill Level: Confident Beginner

**Materials**

Fabric	Yardage	Cutting
DC4245 Multi Handy Gnomes	1 1/4 yard	(1) 44" square
CX4248 Black Doors & Windows	1 yard	Assorted doors & windows as desired
DC4172 Green Summer Fern	1/2 yard	Cut (1) 16 1/2" x 25 1/2"
K2214 Krystal	5/8 yard	Cut (4) 2 1/2" x W.O.F. - binding Cut (2) 1" x 14" Cut (1) 6" x 11" Backing for windows & doors
DC4015 Green Lawn	3/8 yard	Cut (1) 9 1/2" x 25 1/2"
CX2932 Gray Just Rocks	1/4 yard	Cut (2) 1 1/2" x 25 1/2" Cut (2) 1 1/2" x 27 1/2" Assorted rocks for applique
CX4247 Rust Bricks	Fat 1/4	Cut (1) 15" x 19"
CX4251 Rust Roof Tiles	3" x 15" piece	Cut (2) 1" x 14"
<b>Also Needed:</b> 45" x 45" Backing, 45" x 45" Batting, Threads to match, scraps of batting for windows and doors, Fusible Web, Straight Pins, Scissors, Acrylic Ruler, Rotary Cutter, Hook and Loop tape or dots for each window and door, fabric glue, and Mat.		

**Disclaimers**

This pattern is provided as a courtesy to quilt stores, catalogs, and quilters. Michael Miller Fabrics, LLC is not responsible for the accuracy of any kits packaged to accompany this pattern. Please direct any inquiries to the kit maker.

Yardage requirements for this pattern may allow for excess yardage to accommodate specific placement of motifs or to allow for any fussy-cutting to achieve the finished quilt design.

While every attempt has been made to give accurate measurements, yardage requirements, and construction directions; this does not allow personal variations in measuring, cutting, and or sewing. The enclosed directions were used in the construction of the original quilt.

**Directions**

1. Sew with right sides together along 25 1/2" edge DC4172 and DC4015 to make a 25 1/2" square. Set aside.
2. Fold CX4247 in half vertically (15"H x 9 1/2" W). Measure 5" down from the top along the raw edges. Draw a line from the 5" mark diagonally to the top of the fold. Cut along the line to make the roof peak. Set aside.
3. Sew one K2214 14" piece to one CX4251 14" piece. Make (2) strips. Sew one K2214 edge right sides together to one side of the CX4247 roof peak. Repeat for the other side. Miter the peak at the center top of the house.
4. Place house on pieced 25 1/2" square with the top of the roof 2 1/2" from the top edge, the bottom of the house 5" from the bottom edge and the sides evenly centered. Machine applique in place. From the back, carefully remove the excess fabric leaving a 1/4" seam allowance.
5. Following manufacturer's directions, iron fusible web on the back of CX2932. Cut out one large rock for the top of the roof accent, cut a 5" rock path and two rock groupings for each side of the house. Remove paper backing, fuse in place. Machine satin stitch raw edges to finish.
6. Sew one CX2932 25 1/2" piece to the top and bottom of the quilt. Sew one CX2932 27 1/2" piece to each side. Turn under 1/4" seam allowance on all sides and press. Fold square in half vertically and horizontally. Mark each side at the fold.
7. Fold DC4245 44" square the same as in Step #6. Mark each side at the fold. Place the 27 1/2" in the center right side up. Align marks at each fold for accurate centering. Topstitch square onto background. Remove excess fabric from the back as in Step #4. Trim finished piece to 42" x 42".
8. Choose several gnomes and flower clumps, back with fusible web. Cut out. Scatter pieces throughout landscape as shown or as desired. Machine applique in place.

9. Layer backing, batting, and quilt top. Baste.
10. Quilt as desired.
11. Bind all edges with K2214 to finish.
12. For windows and doors - cut out as many as desired. Do windows in pairs (2). Layer backing (K2214), batting and window/door. Stitch around the outer edge with a narrow zig-zag. Machine quilt details inside as desired. Cut out as close as possible to the zig-zag stitching. Machine satin stitch over the zig-zag stitches to finish. Repeat for each door and window. More doors and windows give more options for decorating the house.



13. Using fabric glue, glue a hook - side dots to the back of each door and window. Let dry. Glue (8) loop- side dots to the brick house as shown or as desired. Let dry.
14. From K2214 6" x 11 1/2" piece in half right sides together. Stitch on all (3) sides, leaving a 2" opening for turning. Clip corners. Turn to the right side. Press. Hand stitch pocket to the back side of the quilt to hold the doors and windows between playing "house".

**NOTE:** Hook and Loop dots come in pairs. There will be leftover loop dots. More hook dots are needed for each door and window than are needed on the quilt.