

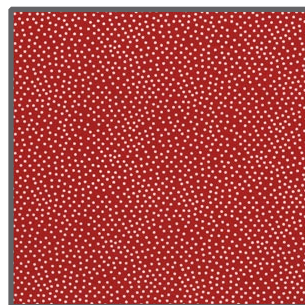
FABRIC REQUIREMENTS



DC4177 Multi Gnomes
7/8 yard



DC4171 Black Summer Mushroom
7/8 yard



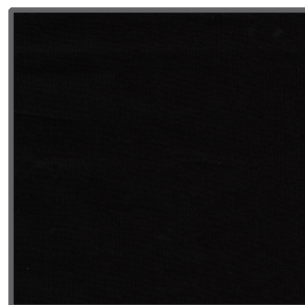
CX1065 Cherry Garden Pindot
5/8 yard



K1007 Krystal
5/8 yard



K1026 Krystal
5/8 yard



Jet Black
1 1/4 yard

Gnomes and Mushrooms



Size: Approximately 50"W x 50"H

Quilt designed by Marinda Stewart
Skill Level: Beginner



55" x 55" Backing and Batting

118 West 22nd Street 5th Floor New York, NY 10011
Tel: 212.704.0774 Fax: 212. 633. 0272 email: info@michaelmillerfabrics.com

www.michaelmillerfabrics.com

"Gnomes and Mushrooms"

Quilt by Marinda Stewart

Size: Approximately 50"W x 50"H - Skill Level: Beginner

Materials

Fabric	Yardage	Cutting
DC4177 Multi Gnomes	7/8 yard	*Fussy cut (9) 6 1/2" squares
DC4171 Black Summer Mushrooms	7/8 yard	Cut (4) vertical 5 1/2" w x 16" h Cut (4) horizontal 5 1/2" h x 16" w
Jet Black	1 1/4 yard	Cut (12) 2 1/2" x 10 1/2" Cut (4) 2 1/2" x 38 1/2" Cut (5) 2 1/2" x W.O.F. - Binding
CX1065 Cherry Garden Pindot	5/8 yard	Cut (18) 1 1/2" x 6 1/2" Cut (18) 1 1/2" x 8 1/2" Cut (16) 1 1/2" x 5 1/2" Cut (2) 1 1/2" x 38 1/2" Cut (2) 1 1/2" x 40 1/2" Cut (8) Mushrooms
K1026 Krystal	5/8 yard	Cut (18) 1 1/2" x 8 1/2" Cut (18) 1 1/2" x 10 1/2" Cut (8) 5 1/2" Squares
K1007 Krystal	3" x 12" piece	Cut (8) Mushroom stems
* Center each on a motif		
** OPTIONAL: Use tear-away stabilizer on the back of each block before stitching to stabilize the block. Remove once stitched.		
Additional Materials: 55" x 55" Backing, 55" x 55" Batting, Thread to match and grass green, Fusible Web, Straight Pins, Scissors, Acrylic Ruler, Rotary Cutter, and Mat. OPTIONAL: Tear-Away Stabilizer		

Disclaimers

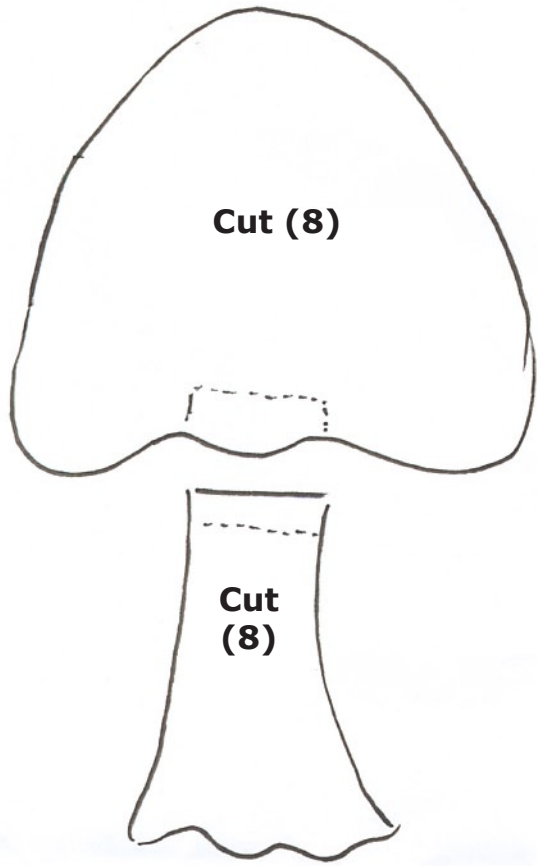
This pattern is provided as a courtesy to quilt stores, catalogs, and quilters. Michael Miller Fabrics, LLC is not responsible for the accuracy of any kits packaged to accompany this pattern. Please direct any inquiries to the kit maker.

Yardage requirements for this pattern may allow for excess yardage to accommodate specific placement of motifs or to allow for any fussy-cutting to achieve the finished quilt design.

While every attempt has been made to give accurate measurements, yardage requirements, and construction directions; this does not allow personal variations in measuring, cutting, and or sewing. The enclosed directions were used in the construction of the original quilt.

Directions

1. Sew one CX1065 6 1/2" piece to the top and bottom of the DC4177 6 1/2" squares. Sew one CX1065 8 1/2" piece to each side of each square.
2. Sew one K1026 8 1/2" piece to the top and bottom of each square. Sew one K1026 10 1/2" piece to each side of each square.
3. Beginning and ending with a Jet Black 10 1/2" piece alternate 2 1/2" wide strips with blocks. Make (3) rows. Beginning and ending with a Jet Black 38 1/2" piece alternate 2 1/2" wide strips with rows of blocks to make one 38 1/2" square.
4. Sew one CX1065 38 1/2" piece to the top and bottom of the quilt. Sew one CX1065 40 1/2" piece to each side. Set aside.
5. For the mushroom blocks - trace pattern pieces onto the paper side of the fusible web. Trace (8) mushrooms and (8) stems. Rough cut out. Following manufacturer's directions iron stem pieces on the wrong side of K1007 and the mushrooms on the wrong side of CX1065. Cut out. Center one mushroom and one stem on one K1026 5 1/2" square. Fuse in place. Machine applique all raw edges to finish **. Using grass green thread free-motion straight stitch blades of grass at the bottom sides of each mushroom stem as shown.
6. Piece (2) rows as follows - one CX1065 5 1/2" piece, one DC4171 horizontal piece, one CX1065 5 1/2" piece, one mushroom block, one CX1065 piece, one DC4171 horizontal piece and end with one CX1065 5 1/2" piece. Sew one row to the top and one row to the bottom of the quilt. Beginning and ending with a mushroom block, sew the remaining CX1065, DC4171 vertical pieces together in same pattern as the top and bottom rows. Keep the motifs upright. Make two rows. Sew one row to each side of the quilt.
7. Layer backing, batting, and quilt top. Baste.
8. Quilt as desired.
9. Piece 2 1/2" x W.O.F. Jet Black pieces together for binding. Bind quilt to finish.



*Marinda © 2009