

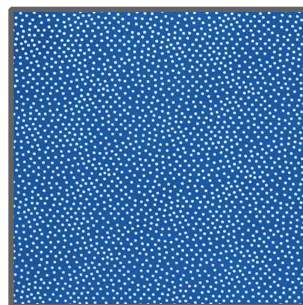
FABRIC REQUIREMENTS



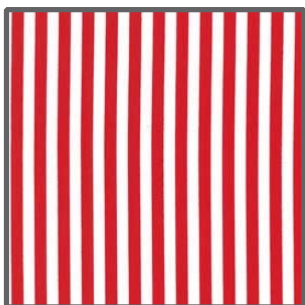
**CX4284 Multi
Gnome Some Traveler
1 yard**



**CX2517 Blue
Clouds
1 3/8 yard**



**CX1065 Ocean
Garden Pindot
3/4 yard**



**CX3584 Red
Clown Stripe
1/6 yard**



**CX4332 Multi
Gnome Panel
3/8 yard**



**K1149
Krystal
3/8 yard**

45" x 60" Backing and Batting

Gnome Some Traveler



Size: Approximately 41"W x 54"H

Quilt designed by Marinda Stewart

Skill Level: Beginner



118 West 22nd Street 5th Floor New York, NY 10011
Tel: 212.704.0774 Fax: 212. 633. 0272 email: info@michaelmillerfabrics.com

www.michaelmillerfabrics.com

"Gnome Some Traveler"

Quilt by Marinda Stewart

Size: Approximately 41"W x 54"H - Skill Level: Beginner

Materials

Fabric	Yardage	Cutting
CX4284 Multi Gnome Some Traveler	1 yard	Fussy cut (10) motifs
CX2517 Blue Clouds	1 3/8 yard	Cut (1) 32 1/2" w X 45 1/2" h
CX1065 Ocean Garden Pindot	3/4 yard	Cut (2) 4 1/2" X 33 1/2" Cut (2) 4 1/2" X 54 1/2" pieced for length
*CX4332 Multi Gnome Panel	3/8 yard	Cut (1) 11" w X 21" h Cut (1) 3" X 8" from background fabric
CX3584 Red Clown Stripe	1/6 yard	Cut (2) 1" X 32 1/2" Cut (2) 1" X 46 1/2" pieced for length
K1149 Krystal	3/8 yard	Cut (5) 2 1/2" X W.O.F. - binding
* Or amount needed to get one panel repeat		
Additional Materials: 45" x 60" Backing, 45" x 60" Batting, Thread to match, Fusible Web, Straight Pins, Scissors, Acrylic Ruler, Rotary Cutter, Permanent fine point pens - black and red, and Mat. OPTIONAL: Iron-on Tear-Away Stabilizer and non-stick pressing sheet.		

Disclaimers

This pattern is provided as a courtesy to quilt stores, catalogs, and quilters. Michael Miller Fabrics, LLC is not responsible for the accuracy of any kits packaged to accompany this pattern. Please direct any inquiries to the kit maker.

Yardage requirements for this pattern may allow for excess yardage to accommodate specific placement of motifs or to allow for any fussy-cutting to achieve the finished quilt design.

While every attempt has been made to give accurate measurements, yardage requirements, and construction directions; this does not allow personal variations in measuring, cutting, and or sewing. The enclosed directions were used in the construction of the original quilt.

Directions

- Center CX4332 panel in the middle of the CX2517 piece. Machine satin-stitch edges to finish. Carefully remove excess fabric from behind the small panel. Leave approximately a 1/4" seam.
Note: Using Iron-On tear away stabilizer behind the appliques will make the stitching easier and smoother. Remove stabilizer once stitching is complete.
- Following manufacturer's directions iron fusible web onto the back of each CX4284 motif. Scatter motifs as shown or as desired around center panel. Machine applique in place.
- With black permanent pen write the names of the places on the 3" x 8" fabric - London, Paris, New York, The Nile, Pisa, Sydney, South Pacific, Taj Mahal, Tokyo, and Moscow. Add additional places such as San Francisco, Barcelona, Bangkok, Rome, and Athens. Put a red check by the first ten names. Back the list with fusible web. Carefully cut out the fingers on the left hand of the gnome. Slip list into the hand. Fuse in place. Machine applique raw edges to finish.
- Sew CX3584 32 1/2" strip to the top and bottom of the quilt. Sew CX3584 46 1/2" strip to each side.
- Sew one CX1065 33 1/2" strip to the top and bottom of the quilt. Sew CX1065 54 1/2" strip to each side.
- Layer backing, batting, and quilt top. Baste.
- Quilt as desired.
- Piece K1149 for binding. Bind quilt to finish.