

Fabric Requirements



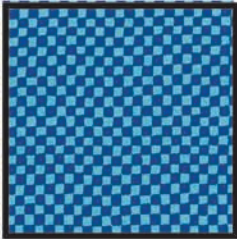
**CX3780 Brite
Geisha Tale**
3/4 yard



**CX3586 Blue
Serenity Sky**
3/4 yard



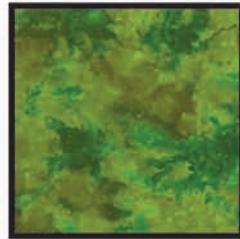
**CX3781 Brite
Geishas**
1/2 yard



**CX0482 Blueberry
Clown Check**
3/8 yard



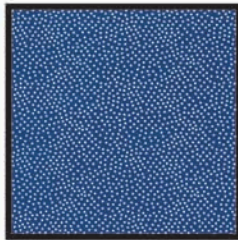
**K1062
Krystal**
3/8 yard



**CX3060 Moss
Water Spot**
3/8 yard



**CX1065 Apple
Garden Pindot**
3/8 yard



**CX1065 Navy
Garden Pintdot**
3/8 yard



**CX3647 Indigo
Rainforest Spectrum**
3/8 yard



**K1164
Krystal**
3/8 yard



Batting 55" x 55"



Backing 55" x 55"

Geisha Tale



Quilt measures approximately 50" x 50"

Quilt designed by Marinda Stewart



118 West 22nd Street 5th Floor New York, NY 10011
Tel: 212-704-0774 Fax 212-633-0272 Email: info@michaelmillerfabrics.com
www.michaelmillerfabrics.com

Geisha Tale

Quilt designed by Marinda Stewart. Quilt measures approximately 50" x 50"
Always measure the quilt top before cutting border lengths.

Fabric:	Yardage:	Cutting
CX3780 Brite	3/4 yard**	Cut one 26" square panel.
CX0482 Blueberry	3/8 yard	Cut two *1-1/4" x 26" strips.
		Cut two *1-1/4" x 27-1/2" strips.
		Cut two *1-1/4" x 36-1/2" strips.
		Cut two *1-1/4" x 38" strips.
K1062	3/8 yard	Cut two 1" x 27-1/2" strips.
		Cut two 1" x 28-1/2" strips.
		Cut two 1-3/4" x 38" strips.
		Cut two 1-3/4" x 40-1/2" strips.
CX3781 Brite	1/2 yard	Cut eight 4-1/2" squares centering each square on a Geisha.
CX3586 Blue	7/8 yard	Cut two 6" squares.
		Cut sixty-four 3" squares.
		Cut forty-eight 2-1/2" squares.
CX3060 Moss	3/8 yard	Cut one 6" square.
		Cut sixteen 3" x 5-1/2" strips.
		Cut eight 2-1/2" x 4-1/2" strips.
CX1065 Apple	3/8 yard	Cut sixteen 3" x 5-1/2" strips.
		Cut eight 2-1/2" x 4-1/2" strips.
CX3647 Indigo	1/2 yard	Cut one 6" square.
		Cut sixteen 3" x 5-1/2" strips.
		Cut sixteen 2-1/2" x 4-1/2" strips.
CX1065 Navy	1/2 yard	Cut sixteen 3" x 5-1/2" strips.
		Cut sixteen 2-1/2" x 4-1/2" strips.
K1164	1/2 yard	Cut six 2-1/4" x Width of Fabric (WOF) strips. Piece the strips together to make the binding.

**Or amount to get one complete 26" x 26" repeat.

You will also need:

55" x 55" backing

55" X 55" batting

Threads to match

Scissors, straight pins, acrylic ruler, mat, rotary cutter

Disclaimers

- This pattern is provided as a courtesy to quilt stores, catalogs and quilters. Michael Miller Fabrics, LLC is not responsible for the accuracy of any kits packaged to accompany this pattern. Please direct any inquires to the kit maker.
- Yardage requirements for this pattern may allow for excess yardage to accommodate specific placement of motifs or to allow for any fussy-cutting to achieve the finished quilt design.
- While every attempt has been made to give accurate measurements, yardage requirements and construction directions, this does not allow for personal variations in measuring, cutting and or sewing. the enclosed directions were used in the construction of the original quilt.

Assembly Instructions:

- 01) Sew one 1-1/4" x 26" CX0489 Blueberry strip to the top and one to the bottom of the 26" CX3780 Brite panel. Sew one 1-1/4" x 27-1/2" CX0482 Blueberry strip to each side of the CX3780 Brite panel to make the quilt top.
- 02) Sew one 1" x 27-1/2" K1062 strip to the top and bottom of the quilt top. Sew one 1" x 28-1/2" K1062 strip to each side of the quilt top.
- 03) To make one picket unit, place one 2-1/2" CX3586 Blue square on the left side of one 2-1/2" x 4-1/2" CX3647 Indigo strip, right sides together (Fig. 1). Sew across the diagonal of the square from the upper left corner to the lower right corner (Fig. 1). Flip open the triangle formed and press (Fig. 2). Trim away the excess fabric from behind the triangle leaving a 1/4" seam allowance. Make sixteen Blue Picket A units total.

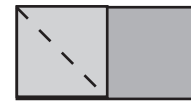


FIG. 1

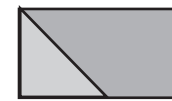


FIG. 2

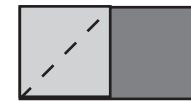


FIG. 3

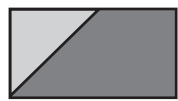


FIG. 4

- 04) Place one 2-1/2" CX3586 Blue square on the left side of one 2-1/2" x 4-1/2" CX1065 Navy strip, right sides together (Fig. 3). Sew across the diagonal of the square from the lower left corner to the upper right corner (Fig. 3). Flip open the triangle formed and press (Fig. 4). Trim away the excess fabric from behind the triangle leaving a 1/4" seam allowance. Make sixteen Blue Picket B units total.

Assembly Instructions:

- 05) Sew one Blue Picket A and One Blue Picket B unit together to make one 4-1/2" Blue Picket square (Fig. 5). Make sixteen 4-1/2" Blue Picket squares total.
- 06) Repeat Step 3 using 2-1/2" CX3586 Blue squares and 2-1/2" x 4-1/2" CX3060 Moss strips. Make eight Green Picket A Units total.
- 07) Repeat Step 4 using 2-1/2" CX3586 Blue squares and 2-1/2" x 4-1/2" CX1065 Apple strips. Make eight Green Picket B units total.
- 08) Sew one Picket A and One Picket B unit together to make one 4-1/2" Green Picket square (Fig. 5). Make eight 4-1/2" Green Picket squares.
- 09) Sew one 4-1/2" Blue Picket Fence unit on each side of one 4-1/2" Green Picket Fence Unit. Repeat to make eight Picket strips.
- 10) Sew one Picket strip to each side of one 4-1/2" CX3781 Brite square to make the top border. Repeat to make the bottom border. **NOTE: Keep Geisha Girls upright in the each row.** Sew the Borders to the quilt
- 11) Sew one Picket strip to the top and bottom of one 4-1/2" CX3781 Brite square to make one side border. To complete the side border, sew one 4-1/2" CX3781 Brite square to the top and bottom of the side border. Repeat to make a second side border. Sew the borders to the quilt top.
- 12) Sew one 1-1/4" x 36-1/2" CX0482 Blueberry strip to the top and one to the bottom of the quilt top. Sew one 1-1/4" x 38" CX0482 Blueberry strip to each side of the quilt top.
- 13) Sew one 1-3/4" x 38" K1062 strip to the top and one to the bottom of the quilt top. Sew one 1-3/4" x 40-1/2" K1062 strip to each side of the quilt top.
- 14) Repeat Step 3 using one 3" CX3586 Blue square and one 3" x 5-1/2" CX3647 Indigo strip to make one Blue Picket A unit. Make sixteen Blue Picket A units total.
- 15) Repeat Step 4 using one 3" CX3586 Blue square and one 3" x 5-1/2" CX1065 Navy strip to make one Blue Picket B unit. Make sixteen Blue Picket B units total.
- 16) Sew one Picket A unit and one Picket B unit together to make one 5-1/2" Blue Picket square.
- 17) Repeat Step 3 using one 3" CX3586 Blue square and one 3" x 5-1/2" CX3060 Moss strip to make one Green Picket A Unit. Make sixteen Green Picket A units total.
- 18) Repeat Step 4 using one 3" CX3586 Blue square and one 3" x 5-1/2" CX1065 Apple strip to make one Green Picket B unit. Make sixteen Green Picket B units total.

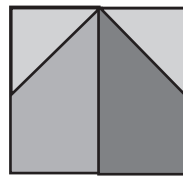


Fig. 5

- 19) Sew one Picket A unit and one Picket B unit together to make one 5-1/2" Green Picket square.
- 20) Starting with one Green Picket square, sew together four Green Picket squares and four blue picket squares, alternating them to make one Outer Picket Border. Repeat to make four borders. Set aside.
- 21) Place one 6" CX3586 Blue square on top of one 6" CX3647 Indigo square, right sides together. Draw a line across the diagonal of the top square (Fig. 6). Sew 1/4" away from each side of the drawn diagonal line (Fig. 6). Cut the two squares apart on the drawn diagonal line (Fig. 7) to make two half-square triangles (Fig. 8). Trim the half-square triangles to measure 5-1/2" square to make two Blue half-square triangle blocks.
- 22) Repeat Step 21, using one 6" CX3060 Moss square and one 6" CX3586 Blue square to make two 5-1/2" Green half-square triangle blocks.
- 23) Refer to the quilt photo for direction and placement to sew one Outer Picket Fence Border from Step 20 to the top and bottom of the quilt top.
- 24) Refer to the quilt photo for placement to sew one 5-1/2" Green half-square triangle and one 5-1/2" Blue half-square triangle to each end of the remaining two Outer Picket Fence borders. Sew the borders to the quilt top.
- 22) Layer, quilt and bind as desired.

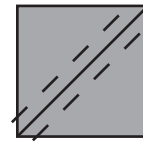


FIG. 6

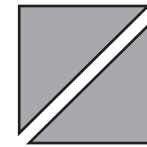


FIG. 7

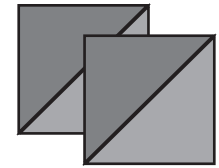


FIG. 8