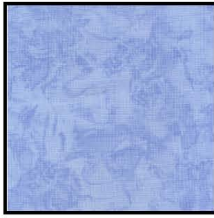


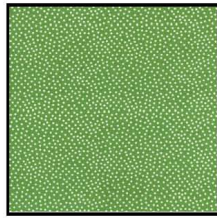
Fabric Requirements



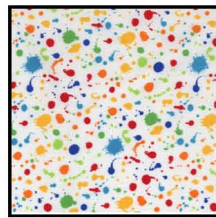
**CX3970 Multi
Fridge Art**
1-3/4 yards



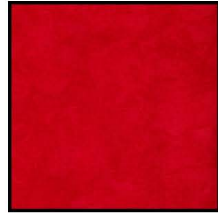
**K1063 Sky Blue
Krystal**
5/8 yard



**CX1065 Apple
Garden Pindot**
3/8 yard



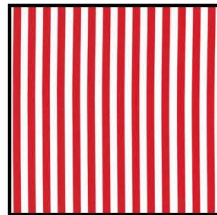
**CX3974 Multi
Splat**
1/2 yard



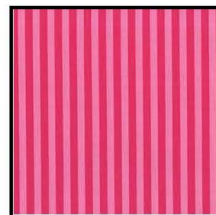
**K1149 Red
Krystal**
3/8 yards



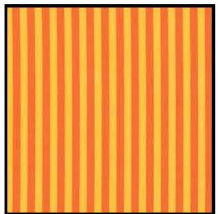
**CX3971 Multi
Messy Hands**
1/4 yard



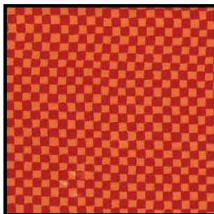
**CX3584 Red
Clown Stripe**
1/4 yard



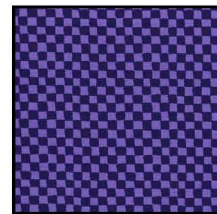
**CX3584 Bubblegum
Clown Stripe**
Fat Quarter



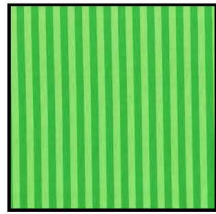
**CX3584 Citrus
Clown Stripe**
Fat Quarter



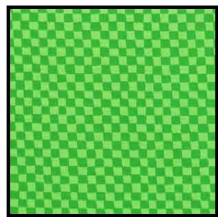
**CX0482 Clementine
Clown Check**
Fat Quarter



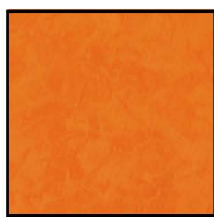
**CX0482 Grape
Clown Check**
Fat Quarter



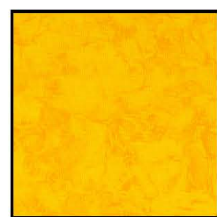
**CX3584 Grass
Clown Stripe**
3" x 12"



**CX0482 Grass
Clown Check**
6" x 8"



**K1143 Orange
Krystal**
6" x 10"



**K1126 Yellow
Krystal**
6" square



**CX3972 Multi
Smile**
Fat 1/8

FRIDGE ART



Quilt designed by Marinda Stewart

Quilt measures approximately 50" square
Skill Level: Confident Beginner



118 West 22nd Street 5th Floor New York, NY 10011

Tel: 212.704.0774 Fax: 212.633.0272 Email: info@michaelmillerfabrics.com

www.michaelmillerfabrics.com

55" x 55" backing and batting

REV: 02.18.09

Fridge Art

Quilt designed by Marinda Stewart. Quilt measures approximately 50" square
Always measure the quilt top before cutting border lengths.

Fabric	Yardage:	Cutting:
CX3970 Multi	1-3/4 yards*	Cut two 5-1/2" H x 40-1/2" W Cut two 50-1/2" H x 5-1/2" W
K1063 Sky Blue	5/8 yard	Cut one 20-1/2" H x 30-1/2" W
CX1065 Apple	3/8 yard	Cut one 10-1/2" H x 30-1/2" W
CX3974 Multi	1/2 yard	Cut two 3-1/2" x 32-1/2" Cut two 3-1/2" x 38-1/2"
K1149 Red	3/8 yard	Cut five 2-1/4" x width of fabric (WOF) strips for the binding. See instructions to cut the mouth and eyes for the sun.
CX3971 Multi	1/4 yard	Cut two 1-1/2" x 30-1/2" strips. Cut two 1-1/2" x 32-1/2" strips.
CX3584 Red	1/4 yard	Cut two 1-1/2" x 38-1/2" strips. Cut two 1-1/2" x 40-1/2" strips.
CX3584 Bubblegum	Fat 1/4	See instructions to cut two flowers.
CX3584 Citrus	Fat 1/4	See instructions to cut two flowers.
CX0482 Clementine	Fat 1/4	See instructions to cut two flowers.
CX0482 Grape	Fat 1/4	See instructions to cut two flowers.
CX3584 Grass	3" x 12"	Cut four 5/8" x 12" stems.
CX0482 Grass	6" x 8"	See instructions to cut nine leaves
K1143 Orange	6" x 10"	See instructions to cut one sun border and thirteen sun rays.
K1126 Yellow	6" square	See instructions to cut one Sun.
CX3972 Multi	Fat 1/8	See instructions to fussy cut four flower centers.

*Directional fabric. If desired use the leftover pieces in the backing.

You will also need:

55" x 55" backing
55" X 55" batting
Threads to match, Scissors, straight pins, acrylic ruler, mat, rotary cutter
Fusible Web

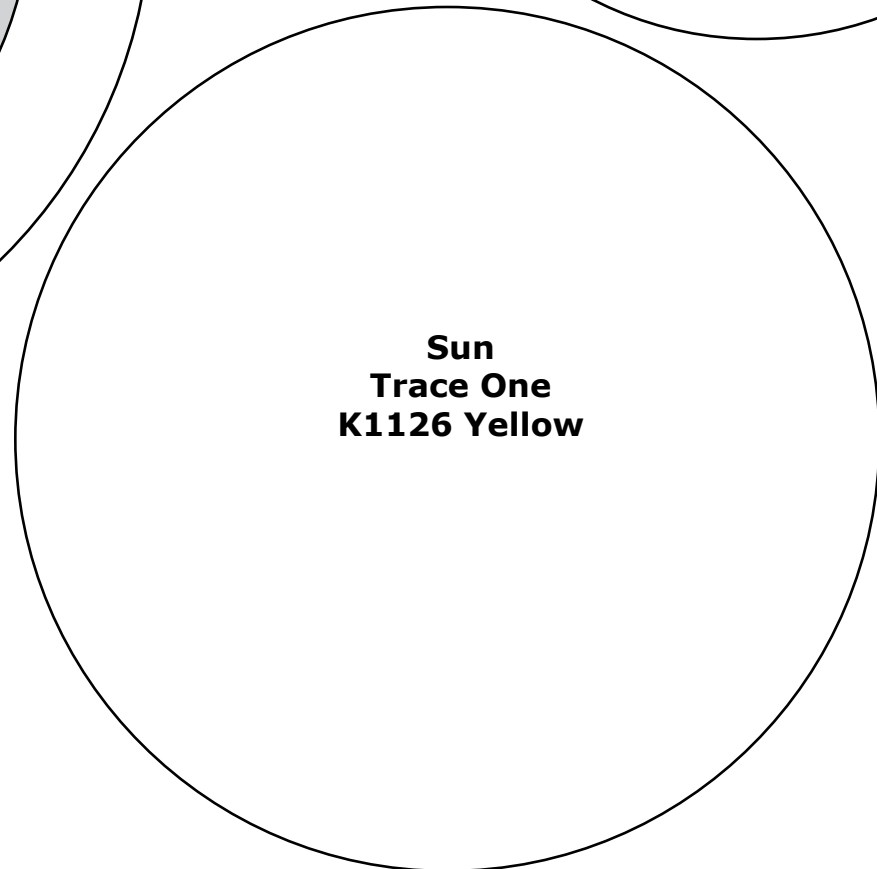
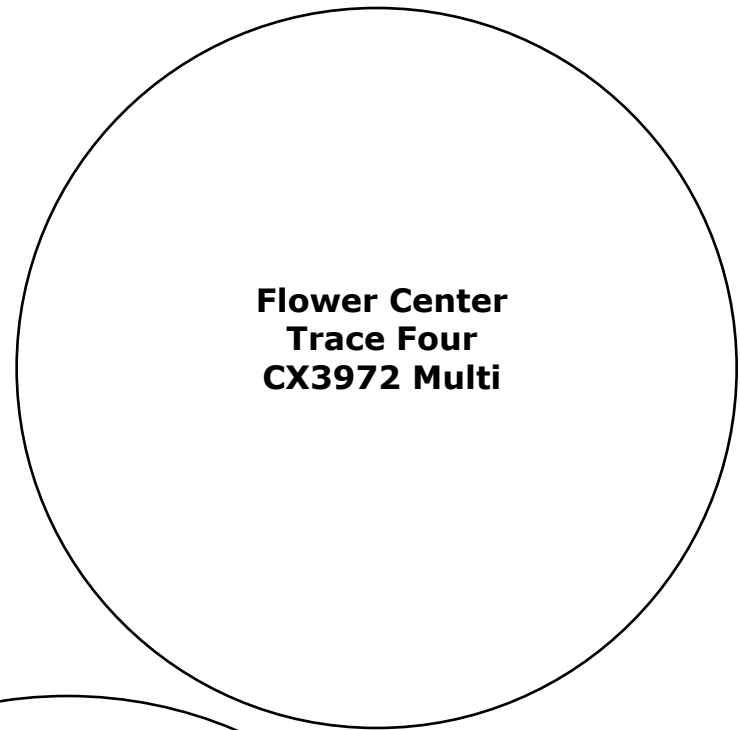
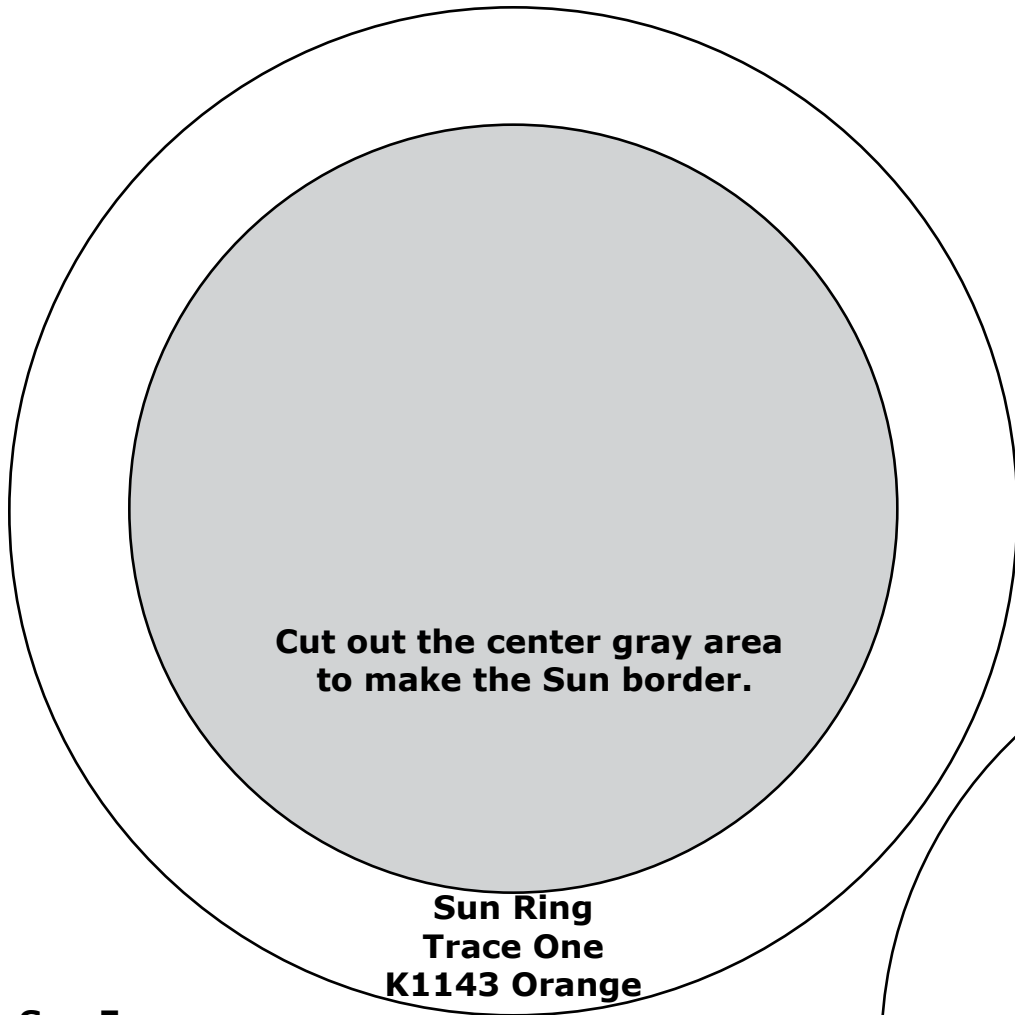
Disclaimers

- This pattern is provided as a courtesy to quilt stores, catalogs and quilters. Michael Miller Fabrics, LLC is not responsible for the accuracy of any kits packaged to accompany this pattern. Please direct any inquiries to the kit maker.
- Yardage requirements for this pattern may allow for excess yardage to accommodate specific placement of motifs or to allow for any fussy-cutting to achieve the finished quilt design.
- While every attempt has been made to give accurate measurements, yardage requirements and construction directions, this does not allow for personal variations in measuring, cutting and or sewing. the enclosed directions were used in the construction of the original quilt.

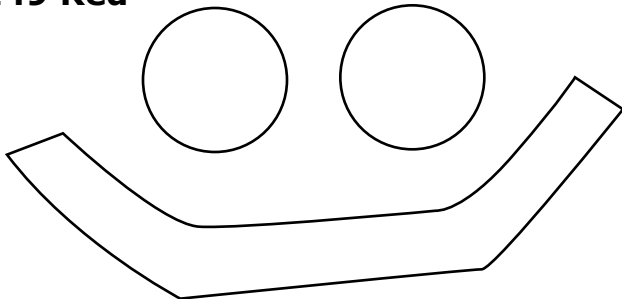
Assembly Instructions:

- 01) Sew one K1063 Sky Blue piece and one CX1065 Apple piece together along the 30-1/2" side to make one 30-1/2" square.
 - 02) Following the manufacturer's instructions, trace the listed number of templates onto the paper side of the fusible. Roughly cut out each template about 1/8" outside the drawn lines.
 - 03) Press each template onto the back side of the listed fabric for each piece. Cut out each template on the drawn lines.
 - 04) Roughly cut out two butterflies from the CX3970 Multi. Fuse a piece of fusible web to the back side of each butterfly. Cut out each butterfly on the drawn lines.
 - 05) Refer to the quilt photo to assemble and press the sun, leaves, stems and butterflies.
 - 06) Finish the raw edges of each applique with a decorative stitch such as a satin or buttonhole stitch to machine applique each piece to the background.
 - 07) Sew one 1-1/2" x 30-1/2" CX3971 Multi strip to the top and bottom of the quilt top. Sew one 1-1/2" x 32-1/2" CX3971 Multi strip to each side of the quilt top.
 - 08) Sew one 3-1/2" x 32-1/2" CX3974 Multi strip to the top and bottom of the quilt top. Sew one 3-1/2" x 38-1/2" CX3974 Multi strip to each side of the quilt top.
 - 09) Sew one 1-1/2" x 38-1/2" CX3584 Red strip to the top and bottom of the quilt top. Sew one 1-1/2" x 40-1/2" CX3584 Red strip to each side of the quilt top.
 - 10) Sew one 5-1/2" x 40-1/2" CX3970 Multi horizontal strip to the top and bottom of the quilt top. Sew one 5-1/2" x 50-1/2" CX3970 Multi vertical strip to each side of the quilt top.
 - 11) Layer backing, batting and quilt top. Baste
 - 12) Quilt as desired.
- ### To make one 3-D flower:
- 13) Trace two flower templates onto the back side of CX3584 Bubblegum. Cut out the two flowers and place them right sides together.
 - 14) Using a 1/4" seam allowance, stitch around the outer edge of the two flowers, pivot at the inside corners. Leave the flower center open. Clip all the curves and inside pivots.
 - 15) Turn the flower right side out and press.
 - 16) Machine applique one flower center over the opening of the 3-D flower as shown.
 - 17) Repeat steps 13-16 to make a 3-D flower from CX3584 Citrus, CX0482 Clementine and CX0482 Grape.
 - 18) Free-motion stitch one flower to the top of each stem onto the quilt to finish.

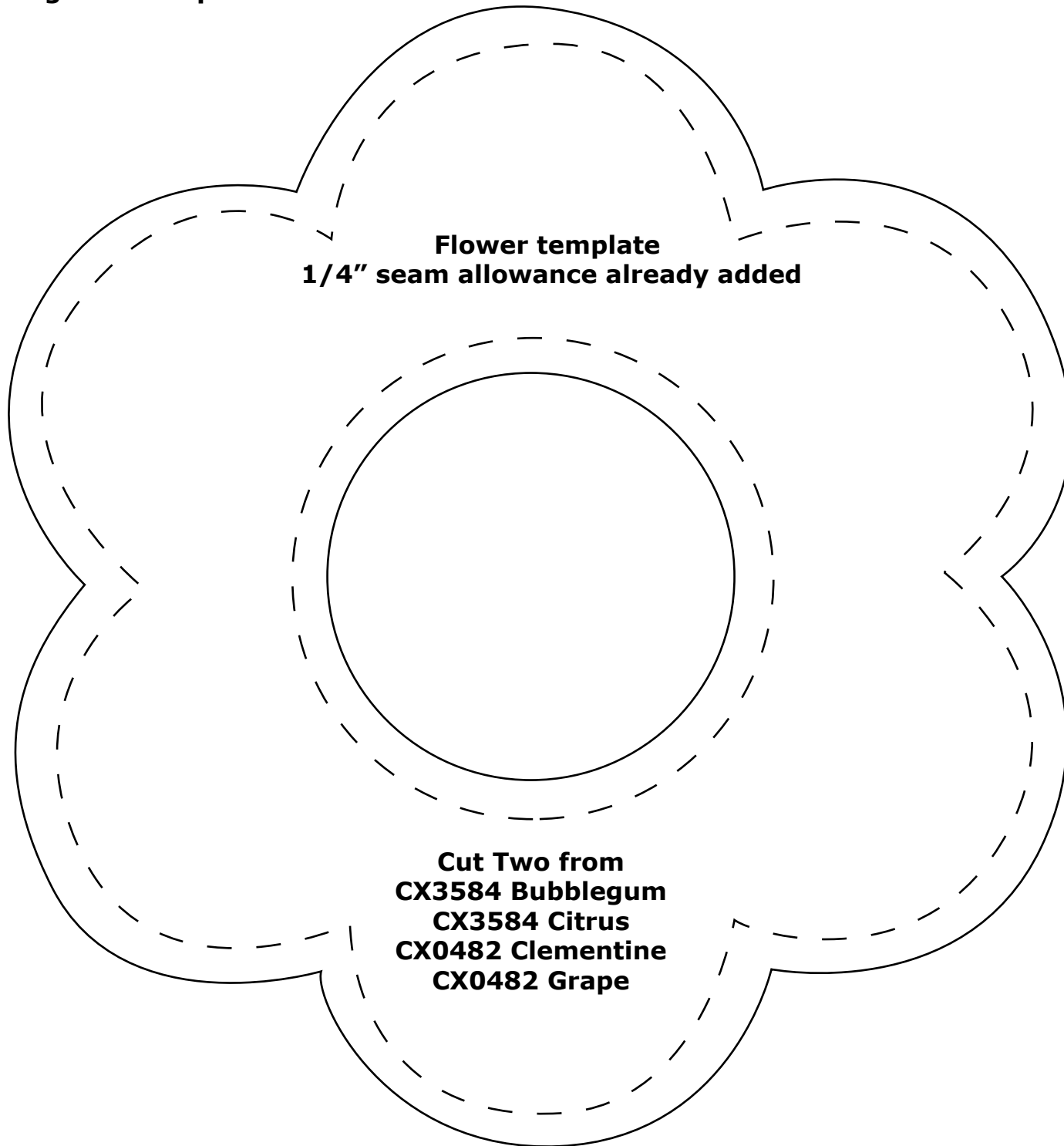
Fridge Art Templates



**Sun Face
Trace One
K1149 Red**

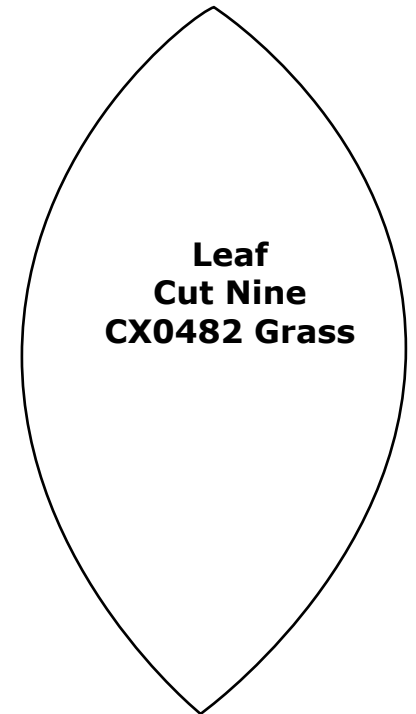


Fridge Art Templates



Flower template
1/4" seam allowance already added

Cut Two from
CX3584 Bubblegum
CX3584 Citrus
CX0482 Clementine
CX0482 Grape



Leaf
Cut Nine
CX0482 Grass