

FABRIC REQUIREMENTS

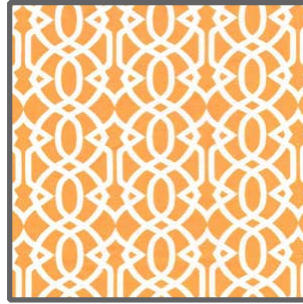
Flights of Fancy



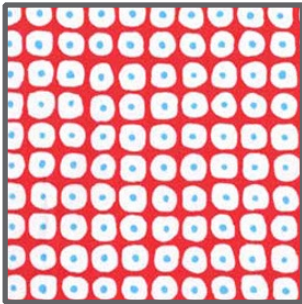
**DC3887-Spring
Tiled Garden
1 yard**



**DC3889-Spring
Beach Stripe
5/8 yard**



**DC3893-Sunset
Garden Trellis
5/8 yard**



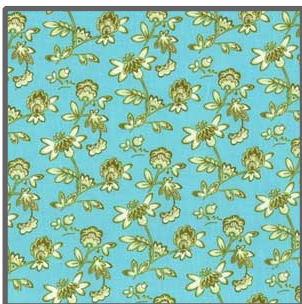
**DC3895-Summer
Cobblestone
1/2 yard**



**DC3888-Spring
Rain Dot
1 yard**



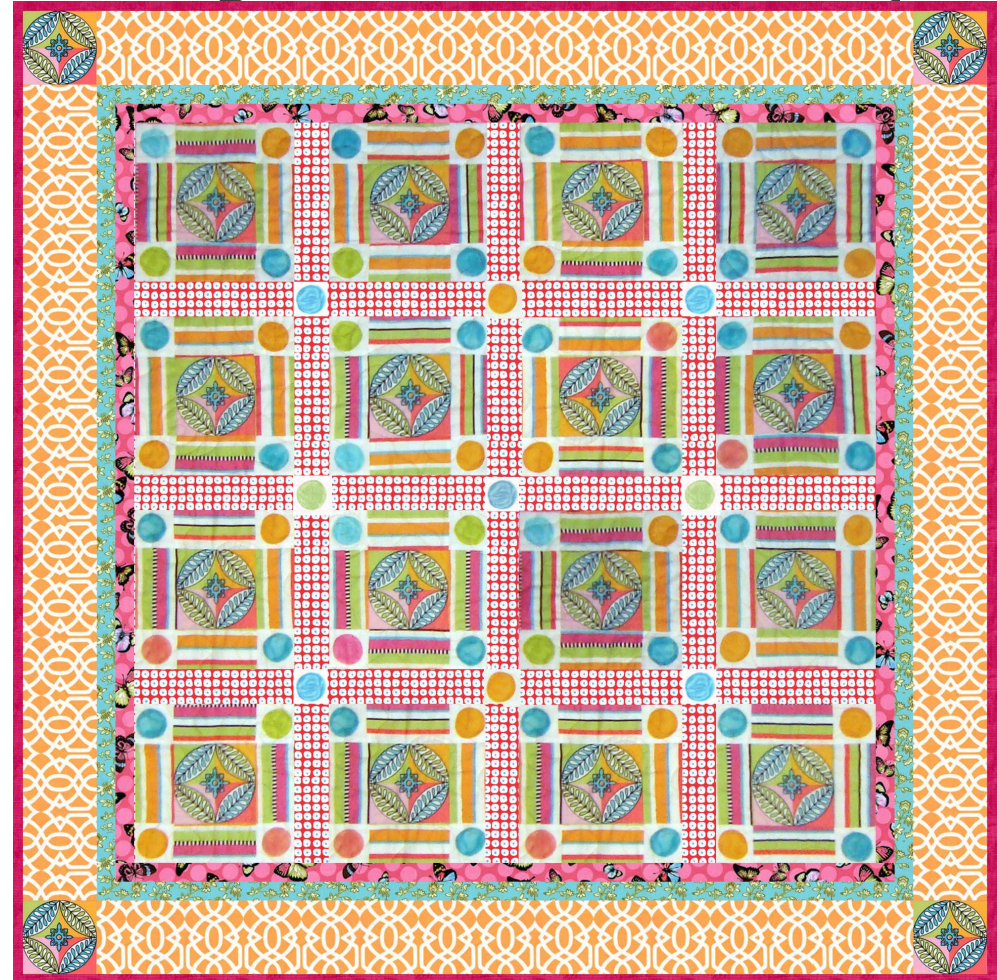
**DC3885-Spring
Papillon
1/6 yard**



**DC3894- Ocean
Petit Garden
1/6 yard**



**K1233
Krystal
3/8 yard**



Size: Approximately 50"W x 50"H

Quilt designed by Marinda Stewart
Skill Level: Beginner



118 West 22nd Street 5th Floor New York, NY 10011
Tel: 212.704.0774 Fax: 212. 633. 0272 email: info@michaelmillerfabrics.com

www.michaelmillerfabrics.com

Backing - 55" x 55" and Batting - 55" x 55"

"Flights of Fancy"

Quilt by Marinda Stewart

Size: Approximately 50"W x 50"H - Skill Level: Beginner

Materials

Fabric	Yardage	Cutting
Tiled Garden DC3887 Spring	1 yard	* Fussy cut (20) 4 1/2" squares
Beach Stripe DC3889 Spring	5/8 yard	Cut (64) 2 1/2" w x 4 1/2" pieces
Garden Trellis DC3893 Sunset	5/8 yard	Cut (4) 4 1/2" x 42 1/2"
Cobblestone DC3895 Summer	1/2 yard	Cut (24) 2 1/2" x 8 1/2"
Rain Dot DC3888 Spring	1 yard	* Fussy cut (73) 2 1/2" square
Papillon DC3885 Spring	1/6 yard	Cut (2) 1 1/2" x 38 1/2" and (2) 1 1/2" x 40 1/2"
Petit Garden DC3894 Ocean	1/6 yard	Cut (2) 1 1/2" x 40 1/2" and (2) 1 1/2" x 42 1/2"
Krystal K1233 (Bright Pink)	3/8 yard	Cut (5) 2 1/4" x width of fabric for binding
* each square centers on one complete motif on fabric. every other motif and every other row will be waste.		

Additional Materials:

55" x 55" backing, 55" x 55" batting, thread to match, straight pins, scissors, acrylic ruler, rotary cutter, and mat.

Disclaimers

This pattern is provided as a courtesy to quilt stores, catalogs, and quilters. Michael Miller Fabrics, LLC is not responsible for the accuracy of

any kits packaged to accompany this pattern. Please direct any inquiries to the kit maker.

Yardage requirements for this pattern may allow for excess yardage to accommodate specific placement of motifs or to allow for any fussy-cutting to achieve the finished quilt design.

While every attempt has been made to give accurate measurements, yardage requirements, and construction directions; this does not allow personal variations in measuring, cutting, and or sewing. The enclosed directions were used in the construction of the original quilt.

Directions

1. For (1) 8 1/2" x 8 1/2" block - sew one DC3889 4 1/2" piece to the top and bottom of one DC3887 4 1/2" square. Sew one 2 1/2" DC3888 square to each end of two DC3889 4 1/2" pieces to make 8 1/2" length. Sew one strip to each side of DC3887 unit. Make (16) total.
2. Beginning and ending with an 8 1/2" block, sew (4) blocks together with DC3895 2 1/2" x 8 1/2" sashing strip between each block. Make (4) rows.
3. For sashing rows, beginning and ending with DC3895 2 1/2" x 8 1/2" sashing, sew together (4) strips with a 2 1/2" DC3888 square between each piece. Make (3) rows total.
4. Beginning and ending with a block row join rows together with a sashing row between each. Match all corners. Piece will measure 38 1/2" square.
5. Sew one DC3885 1 1/2" x 38 1/2" piece to the top and bottom. Sew one 1 1/2" x 40 1/2" piece to each side.
6. Sew one DC3894 1 1/2" x 40 1/2" piece to the top and bottom. Sew one 1 1/2" x 42 1/2" piece to each side.
7. Sew one DC3893 4 1/2" x 42 1/2" piece to the top and bottom. Sew one DC3887 4 1/2" square to each end of each remaining DC3893 strip. Sew one strip to each side.
8. Layer backing, batting and quilt top. Baste.
9. Quilt as desired.
10. Piece K1233 as needed for binding. Bind all edges to finish.