

Fabric Requirements



**DJ3532 Multi
Dick & Jane Blocks
Fat Quarter**



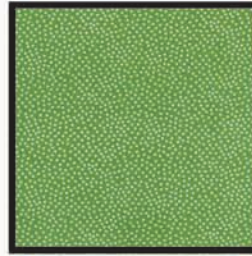
**CX3652 Yellow
Pretty Plaid
Fat Quarter**



**CX3652 Apple
Pretty Plaid
Fat Quarter**



**CX1065 Banana
Garden Pindot
Fat Quarter**



**CX1065 Apple
Garden Pindot
Fat Quarter**



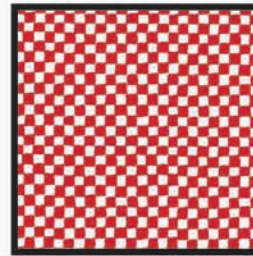
**CX3343 Cherry
Paddle Ball
Fat Quarter**



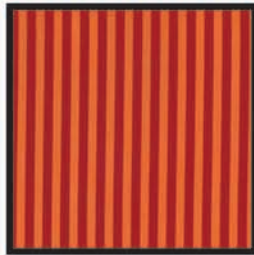
**DJ3358 Blue
Dick & Jane ABC
Fat Quarter**



**CX3295 Play
Lollidot
5/8 yard**



**CX0482 Red
Clown Check
1/4 yard**



**CX3584 Clementine
Clown Stripe
7/8 yard**



**K1149
Krystal
1/2 yard**

Dick and Jane Log Cabin



Quilt measures approximately 50" x 50" Quilt designed by Marinda Stewart



118 West 22nd Street 5th Floor New York, NY 10011
Tel: 212-704-0774 Fax 212-633-0272 Email: info@michaelmillerfabrics.com
www.michaelmillerfabrics.com

Dick and Jane Log Cabin

Quilt designed by Marinda Stewart. Quilt measures approximately 50" x 50

Always measure the quilt top before cutting border lengths.

Fabric:	Yardage:	Cutting:
DJ3532 Multi	Fat Quarter	Cut nine 4-1/2" squares, centering each on a separate motif.
CX3652 Yellow	Fat Quarter	Cut nine 1-1/2" x 4-1/2" strips. Cut nine 1-1/2" x 5-1/2" strips.
CX3652 Apple	Fat Quarter	Cut nine 1-1/2" x 5-1/2" strips. Cut nine 1-1/2" x 6-1/2" strips.
CX1065 Banana	Fat Quarter	Cut nine 1-1/2" x 6-1/2" strips. Cut nine 1-1/2" x 7-1/2" strips.
CX1065 Apple	Fat Quarter	Cut nine 1-1/2" x 7-1/2" strips. Cut nine 1-1/2" x 8-1/2" strips.
CX3343 Cherry	Fat Quarter	Cut nine 1-1/2" x 8-1/2" strips. Cut nine 1-1/2" x 9-1/2" strips.
DJ3558 Blue	Fat Quarter	Cut nine 1-1/2" x 9-1/2" strips. Cut nine 1-1/2" x 10-1/2" strips.
CX3295 Play	5/8 yard	Cut two 4-1/2 x 30-1/2" strips. Cut two 4-1/2" x 38-1/2" strips.
CX0482 Red	1/4 yard	Fussy-cut two 1-1/2" (five rows) x 38-1/2" strips. Fussy-cut two 1-1/2" (five rows) x 40-1/2" strips.
CX3584 Clementine K1149	7/8 yard 1/2 yard	Cut five 5-1/2" x Width of Fabric (WOF). Cut six 2-1/4" x WOF for binding.

Disclaimers

- This pattern is provided as a courtesy to quilt stores, catalogs and quilters. Michael Miller Fabrics, LLC is not responsible for the accuracy of any kits packaged to accompany this pattern. Please direct any inquires to the kit maker.
- Yardage requirements for this pattern may allow for excess yardage to accommodate specific placement of motifs or to allow for any fussy-cutting to achieve the finished quilt design.
- While every attempt has been made to give accurate measurements, yardage requirements and construction directions, this does not allow for personal variations in measuring, cutting and or sewing. the enclosed directions were used in the construction of the original quilt.

Assembly Instructions:

- To make one log cabin block, sew one 1-1/2" x 4-1/2" CX3652 Yellow strip to the top of one of the 4-1/2" DJ3532 square. Sew one of the 1-1/2" x 5-1/2" CX3652 Yellow strip to the right side of the 4-1/2" DJ3532 square.
- Sew one 1-1/2" x 5-1/2" CX3652 Apple strip to the bottom of the 4-1/2" DJ3532 square. Sew one 1-1/2" x 6-1/2" CX3652 Apple strip to the left side of the 4-1/2" DJ3532 square.
- Follow block layout to continue assembling one 10-1/2" square log cabin block.
- Repeat steps 1-3 to make a total of nine 10-1/2" square log cabin blocks.
- Refer to the quilt photo and sew together three 10-1/2" log cabin blocks to make a one row. Repeat to make three rows.
- Sew the three rows together to make a 30-1/2" square quilt top.
- Sew one 4-1/2" x 30-1/2" CX3295 Play strip to each the top and bottom of the quilt top. Sew one 4-1/2" x 38-1/2" CX3295 Play strip to each side of the quilt top.
- Sew one 1-1/2" x 38-1/2" CX0482 Red strip to each the top and bottom of the quilt top. Sew one 1-1/2" x 40-1/2" CX0482 Red strip to each side of the quilt top.
- Layer, quilt and bind as desired.

Block Layout

