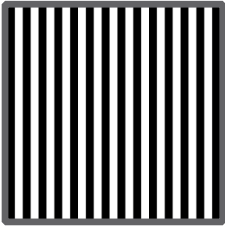


FABRIC REQUIREMENTS



**China Garden
CX3706 - Citron**
1 yard



**Clown Stripe
CX3584 White**
7/8 yard



**China Garden
CX3706 - Black**
3/4 yard



Krystal-K1026
1/6 yard



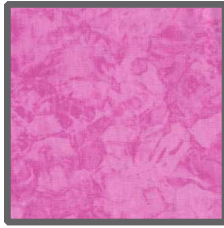
Krystal-K4053
1/6 yard



Krystal-K4054
1/6 yard



Krystal-K4055
1/6 yard



Krystal-K4133
1/6 yard



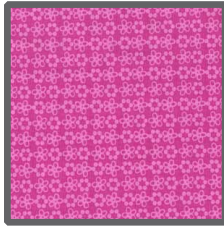
Krystal-K4138
1/6 yard



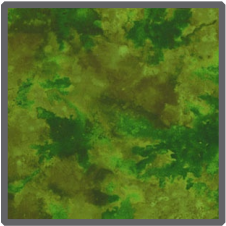
**Garden Pindot
CX1065 - Orchid**
1/6 yard



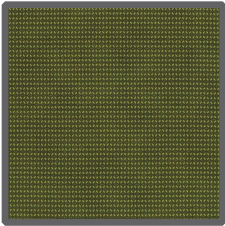
**Hydrangea Blossom
CJ3801 - Pink**
1/6 yard



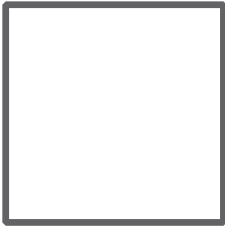
**Pod Ditz
CX3662 - Orchid**
1/6 yard



**Water Spot
CX3060 - Moss**
Fat 1/4



**Imperial Texture
CX3308 - Olive**
Fat 1/4



Backing 45"
1 1/2 yard

Foundation Fabric 1/2 Yard and Batting - 45" x 55"

CHINA GARDEN



Size: Approximately 50"W x 50"H

Quilt designed by Marinda Stewart
Skill Level: Confident Beginner



118 West 22nd Street 5th Floor New York, NY 10011
Tel: 212.704.0774 Fax: 212. 633. 0272 Email: info@michaelmillerfabrics.com

www.michaelmillerfabrics.com

Materials

Fabric	Yardage	Cutting
*China Garden-CX3706 Citron	1 Yard	Cut one 25 1/2" square motif
**Foundation Fabric	1/2 Yard	Cut (20) 5" Squares
Clown Stripe-CX3584 - White	7/8 Yard	Cut two 2" x 25 1/2", two 2" x 28 1/2", two 1 1/2" x 42 1/2", two 1 1/2" x 44 1/2" and five 2 1/4" x Width Of Fabric for binding
China Garden-CX3706 Black	3/4 Yard	Cut two 3 1/2" x 44 1/2" and two 3 1/2" x 50 1/2" piece as needed
Krystal-K1026	1/6 Yard	Cut five 7 1/2" squares
Krystal-K4053	1/6 Yard	
Krystal-K4054	1/6 Yard	
Krystal-K4055	1/6 Yard	
Krystal-K4133	1/6 Yard	
Krystal-K4138	1/6 Yard	Random cut pieces for (20) 5" square Crazy Patch Blocks
Garden Pindot-CX1065 Orchid	1/6 Yard	
Hydrangea Blossom-CJ3801 Pink	1/6 Yard	
Pod Ditz-CX3662 Orchid	1/6 Yard	
Water Spot-CX3060 Moss	Fat 1/4	
Imperial Texture-CX3308 Olive	Fat 1/4	Cut (20) Stem and Calyx
*Pattern runs at right angles to the selvage. Extra yardage is allowed to center the motif		
**Use Muslin or Scrap fabric as foundation for Crazy Patch		

Additional Materials:

55" x 55" Backing, 55" x 55" Batting, Fusible Web, Threads to match, Scissors, Straight Pins, Acrylic Ruler, Rotary Cutter, and Mat.

Disclaimers

This pattern is provided as a courtesy to quilt stores, catalogs, and quilters. Michael Miller Fabrics, LLC is not responsible for the accuracy of any kits packaged to accompany this pattern. Please direct any inquiries to the kit maker.

Yardage requirements for this pattern may allow for excess yardage to accommodate specific placement of motifs or to allow for any fussy-cutting to achieve the finished quilt design.

While every attempt has been made to give accurate measurements, yardage requirements, and construction directions; this does not allow personal variations in measuring, cutting, and or sewing. The enclosed directions were used in the construction of the original quilt.

Directions

1. Sew one CX3584 25 1/2" piece to the top and bottom of the CX3706 square. Sew one CX3584 28 1/2" strip to each side of the quilt. Set aside.
2. To make one crazy-patch appliqué block, start with a 5" foundation square. Using CX3801, CX1065, CX3662, K4133, and K4138 choose one color and cut a random five-sided shape.

Place in the center of the foundation fabric right sides up. Alternate the remaining colors, Cut random pieces and sew one at a time to each side of the center with right sides together.

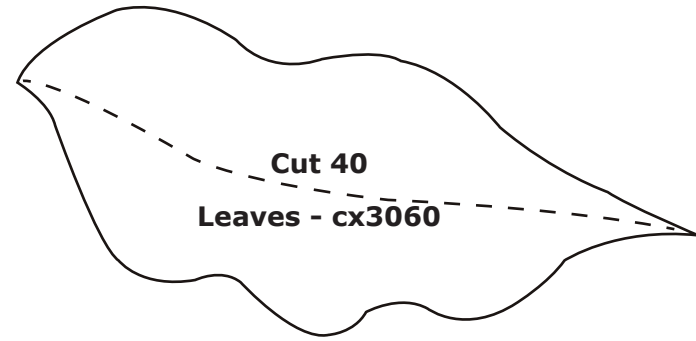
Stitch and flip each piece until the foundation fabric is covered. Using flower pattern, cut out flower. Place flower on one 7 1/2" square as shown on cover image. Machine appliqué in place. Following manufacturers directions, trace leaves and calyx pieces onto fusible web. Iron leaves onto CX3060 and calyx/stems onto CX3308. Cut out. Place one calyx/stem and two leaves on flowers as shown on cover image. Machine appliqué in place. Make twenty blocks total.

3. Sew four 7 1/2" squares together to make one 28 1/2" length. Randomly change the direction of the flowers with each block, refer to the cover image.

Sew to the top of the quilt. Repeat for the bottom of the quilt.

Sew two 6-block strips. Sew one to each side.

4. Sew one CX3584 42 1/2" strip to the top and bottom of the quilt. Sew one CX3584 44 1/2" strip to each side.
5. Sew one CX3706 (Black) 44 1/2" strip to the top and bottom of the quilt. Sew the remaining pieced CX3706 (Black) strips to each side of the quilt.
6. Layer backing, batting, and quilt top. Baste.
7. Quilt as desired.
8. Piece CX3584 2 1/4" binding strips together as needed. Bind quilt as desired.



Templates

