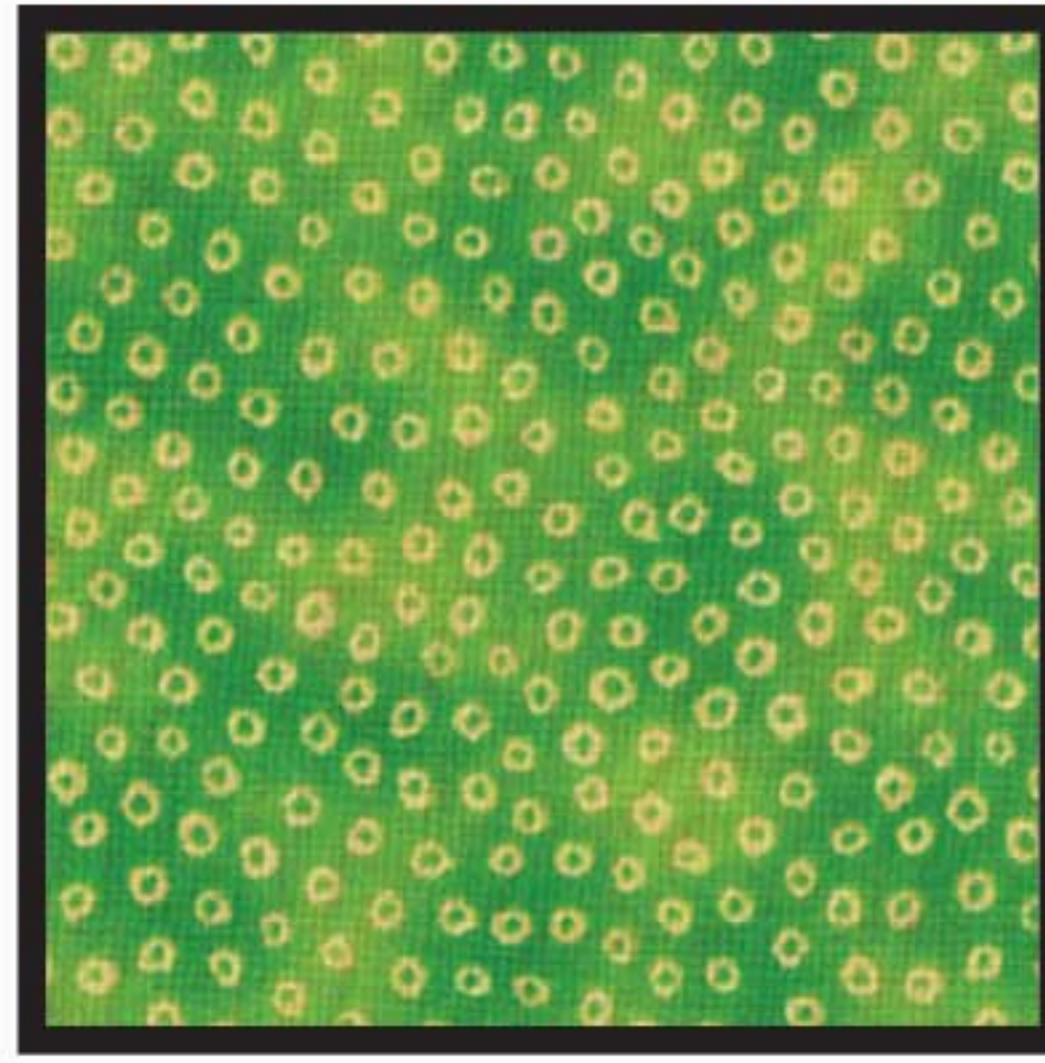


# Fabric Requirements



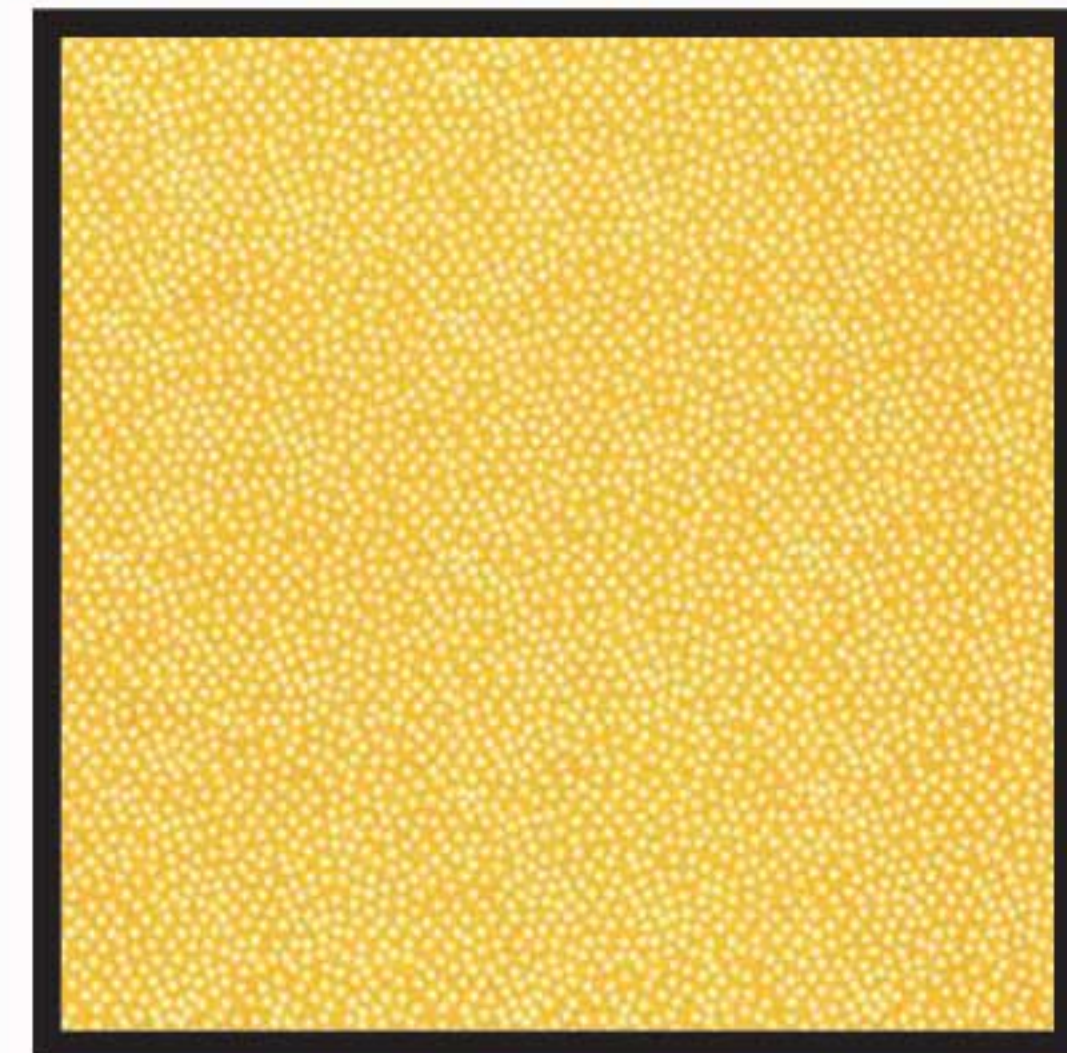
**CX3583 Blue Peepers Garden**  
3 yards



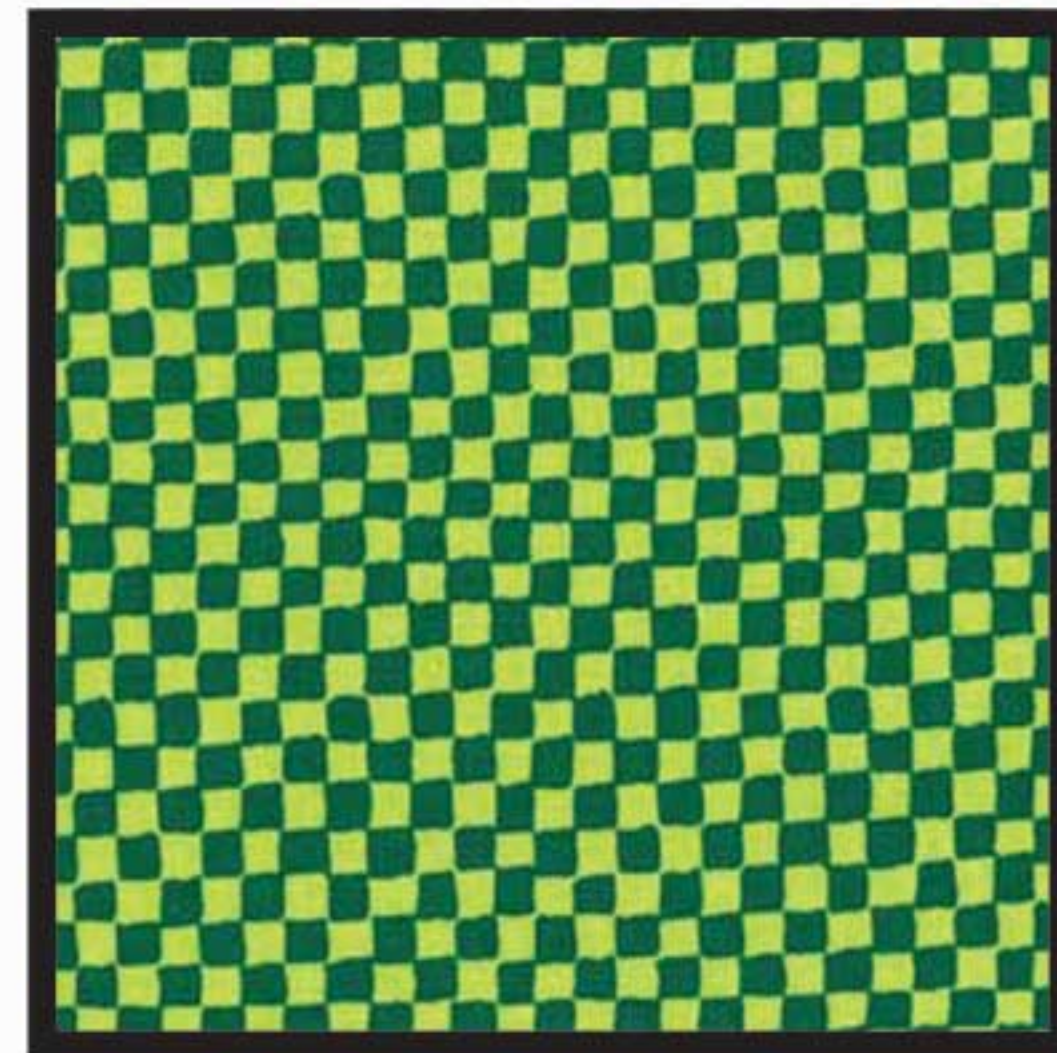
**CX0274 Green Giddy Dot**  
3/4 yard



**CX3584 Key Lime Clown Stripe**  
1/2 yard



**CX1065 Banana Garden Pindot**  
1/3 yard



**CX0482 Spearmint Clown Check**  
1/3 yard



# Checkers in the Garden



Quilt measures approximately 50" x 50"

Quilt designed by Marinda Stewart



118 West 22nd Street 5th Floor New York, NY 10011  
Tel: 212-704-0774 Fax 212-633-0272 Email: [info@michaelmillerfabrics.com](mailto:info@michaelmillerfabrics.com)  
[www.michaelmillerfabrics.com](http://www.michaelmillerfabrics.com)

# Checkers in the Garden

Quilt designed by Marinda Stewart. Quilt measures approximately 50" x 50"

**Always measure the quilt top before cutting border lengths.**

<b>Fabric:</b>	<b>Yardage:</b>	<b>Cutting:</b>
CX0274 Green	3/4 yard	Cut thirty-two 2-3/4" squares. Cut six 2-1/4" x width of fabric (WOF) strips for binding.
CX1065 Banana	1/3 yard	Cut thirty-two 2-3/4" squares.
CX0482 Spearmint	1/3 yard	Cut one strip 4-squares wide (approximately 1-1/4") x 18-1/2" strip. Cut one strip 4-squares x 19-1/2" strip. Cut six strips 4-squares x WOF. Piece the strips together to make two 45-1/2" strips and two 47" strips.
CX3583 Blue	3 yards	Fussy cut two 13-1/2" x LOF strips following the Peepers Stripe. Divide each strip into two equal lengths (approximately 50") to make four 13-1/2" x 50" strips.
CX3584 Key Lime	1/2 yard	Cut six 2-1/2" x WOF strips, piece them together to make four 52" strips.

## OPTIONAL:

### Checkers

CX3583 Blue	---	Cut twelve 2-1/2" x 4-1/2" rectangles with a bee centered at one end of the rectangle. Cut twelve 2-1/2" x 4-1/2" rectangles with a fairy centered at one end of the rectangle.
-------------	-----	---

### Storage Pouch

CX3583 Blue	----	Cut two 9-1/2" x 15" rectangles.
CX1065 Banana	----	Cut one 1-1/2" x WOF strip.

### You will also need:

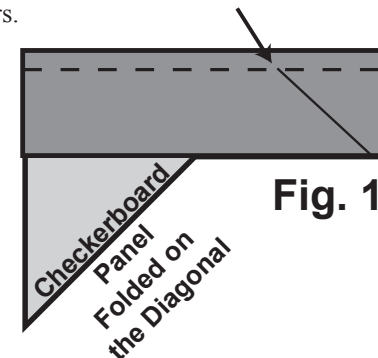
55" x 55" backing  
 55" X 55" batting  
 Threads to match  
 Scissors, straight pins, acrylic ruler, mat, rotary cutter  
 An 8-oz. bag of polyester pellets for the checkers.

## Disclaimers

- This pattern is provided as a courtesy to quilt stores, catalogs and quilters. Michael Miller Fabrics, LLC is not responsible for the accuracy of any kits packaged to accompany this pattern. Please direct any inquires to the kit maker.
- Yardage requirements for this pattern may allow for excess yardage to accommodate specific placement of motifs or to allow for any fussy-cutting to achieve the finished quilt design.
- While every attempt has been made to give accurate measurements, yardage requirements and construction directions, this does not allow for personal variations in measuring, cutting and or sewing. the enclosed directions were used in the construction of the original quilt.

## Assembly Instructions:

- 01) Sew CX0274 and CX1065 2-3/4" squares together into a checkerboard pattern, eight squares by eight squares. Finished size should be an 18-1/2" square.
- 02) Sew one CX0482 4-square x 18-1/2" strip to each the top and bottom of the checkerboard. Sew one 4-square x 19-1/2" strip to each side of the checkerboard.
- 03) Center one of the CX3583 13-1/2" strips on one side of the checkerboard panel, Start sewing the strip a 1/4" from the top edge of the quilt top and stop a 1/4" from the bottom edge. DO NOT TRIM THE EXCESS.
- 04) Repeat with the remaining three sides and three 13-1/2" x 50" strips, making sure to stop and start 1/4" away from each end of the quilt top.
- 03) To miter each corner, fold the quilt top on a diagonal back sides together This should line up the strips from adjacent sides (Fig. 1).
- 05) Starting at the sewn seam (represented by the arrow in Figure 1 ) draw a 45° line out to the edge of the fabric. Sew on the drawn line. Trim the excess fabric leaving a 1/4" seam. Repeat this step with the remaining corners.
- 06) Sew one 4-square x 45-1/2" CX0482 strip to each the top and the bottom of the panel. Sew one 4-square x 47" CX0482 strip to each side of the checkerboard panel.
- 07) Repeat Steps 3-5 to sew one 2-1/2" x 52" CX3584 strip onto each side of the quilt panel and miter each corner.
- 08) Layer, quilt and bind as desired.



## Optional Checkers

- 09) To make one checker, fold a 2-1/2" x 4-1/2" rectangle with the right sides together and stitch down each side. Trim the corners and turn the square to the right side. Fill the square with two small teaspoons of pellets. Fold under 1/4" seam allowance and stitch opening closed. Repeat to make a total of twenty-four checkers, twelve bees and twelve fairies.

## Optional Storage Pouch

- 10) Fold one 9-1/2" x 15" CX3583 piece in half and stitch side and bottom. Repeat for second piece leaving a 3" opening on the side seam. Trim corners and turn.
- 11) Place one pouch inside the other, with right sides together. Stitch the top edge and turn to the right side. Slip stitch opening closed. Push lining into the inside. Press top seam down. Top stitch 1/8" from the edge. For casing, stitch another row 5/8" from the edge.
- 12) For the drawstring, fold the 1-1/2" CX1065 piece in half, lengthwise. Stitch with right sides together. Turn strip to the outside using a safety pin to pull the tube right side out. Press and cut in half.
- 13) Using scissors, cut an opening on each side of the pouch between the stitched lines. Thread one strip from the left side around the opening and out the same place. Knot the ends together. Repeat threading the remaining strip from the right side. Finish the same way.