

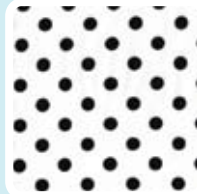
## Fabric Requirements



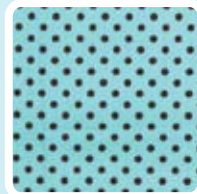
C1065 Cherry  
Garden Pindot  
Fat quarter



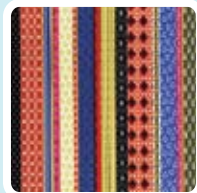
C1488 White  
Ooh La Dot  
1/8 yard



C2489 White  
That's It Dot  
1/8 yard



C2490 Aqua  
Dumb Dot  
Fat quarter



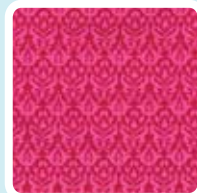
CX3562 Multi  
Betty Stripe  
7/8 yard



CX3564 Citron  
Belinda  
3/4 yard



CX3565 Azure  
Babette  
Fat quarter



CX3568 Orchid  
Bianca  
Fat quarter



CX3569 Clementine  
Bulah  
Fat quarter



CX3614 Multi  
Petal Pusher  
Fat quarter



CX3615 Multi  
Petal Stripe  
1/8 yard



Jet Black  
1/2 yard



K1005  
KRYSTAL  
Fat quarter



K1122  
KRYSTAL  
Fat quarter



K1156  
KRYSTAL  
Fat quarter



Batting  
55"X55"

# Bohemian Bird Quilt

Designed by Marinda Stewart



Size is approximately 50" X 50" Skill Level: Beginner



118 West 22nd Street 5 th Floor New York, NY 10011  
Tel: 212.704.0774 Fax: 212.633.0272 Email: info@michaelmillerfabrics.com  
www.michaelmillerfabrics.com

# Bohemian Bird

Quilt designed by Marinda Stewart. Quilt measures approximately 49" x 49"

**Always measure the quilt top before cutting border lengths.**

<b>Fabric:</b>	<b>Yardage:</b>	<b>Cutting</b>
K1122 (A)	Fat Quarter	Cut six 1-1/2" x Width of Fat Quarter (WOFQ)
K1005 (B)	Fat Quarter	Cut six 2-1/4" x WOFQ
K1156 (C)	Fat Quarter	Cut three 2-3/4" x WOFQ
CX3569 Clementine (D)	Fat Quarter	Cut six 2" x WOFQ
CX3568 Orchid (E)	Fat Quarter	Cut six 2-1/2" x WOFQ
CX3565 Azure (F)	Fat Quarter	Cut three 3-1/2" x WOFQ
CX3614 Multi (G)	Fat Quarter	Cut six 2-1/2" x WOFQ
CX1065 Cherry (H)	Fat Quarter	Cut three 2-1/4" x WOFQ
CX2490 Aqua (I)	Fat Quarter	Cut three 3" x WOFQ
CX3564 Citron	3/4 Yard	Cut four 1-1/2" x 10". Cut three 1-1/2" x 7". Cut three 1-1/2" x 3". Cut one 1-1/2" x 2". Cut one 1-1/2" x 8". Cut six 2-1/2" x 5". Cut two 2-1/2" x 7". Cut two 2-1/2" x 3". Cut one 2-1/2" x 6". Cut one 2-1/2" x 4". Cut one 2-1/2" x 9". Cut one 2-1/2" x 1". Cut one 2-1/2" x 8". Cut one 2-1/2" x 2". Cut two 3-1/2" x 8". Cut two 3-1/2" x 2". Cut two 3-1/2" x 6". Cut two 3-1/2" x 4". Cut two 1" x 36-1/2". Cut two 1" x 37-1/2". Cut two 1" x 37-1/2". Cut two 1" x 38-1/2". Cut two 1" x 38-1/2". Cut two 1" x 39-1/2". Cut five 5-1/2" x WOF.
CX3615 Multi	1/6 Yard	Cut five 2-1/4" x WOF for binding.
*CX2489 White	1/6 Yard	See instructions to cut the appliques.
*CX1488 White	1/6 Yard	
CX3562 Multi	7/8 Yard	
Jet Black	5/8 Yard	

\*Optional- Fussy cut each strip, centering on a row of polka dots for the borders.

## You will also need:

55" x 55" backing

55" x 55" batting

Fusible Web

Threads to match

Scissors, straight pins, acrylic ruler, mat, rotary cutter

## Disclaimers

This pattern is provided as a courtesy to quilt stores, catalogs and quilters. Michael Miller Fabrics, LLC is not responsible for the accuracy of any kits packaged to accompany this pattern. Please direct any inquires to the kit maker.

Yardage requirements for this pattern may allow for excess yardage to accommodate specific placement of motifs or to allow for any fussy-cutting to achieve the finished quilt design.

While every attempt has been made to give accurate measurements, yardage requirements and construction directions, this does not allow for personal variations in measuring, cutting and or sewing. the enclosed directions were used in the construction of the original quilt.

## Assembly Instructions:

- Sew strips A-H together in the following sequence: A, H, G, E, F, D, B, I, C, G, E, A, D, B. Make three strip sets.
- From the strip sets, cut eight 1-1/2" x 26-1/2" strips across the pieced rows (fig. 1). Cut eight 2-1/2" x 26-1/2" strips. Cut four 3-1/2" x 26-1/2" strips.
- Sew the CX3564 Citron strips to the pieced strips according to the diagram provided.
- Using the attached diagram, piece the twenty strips together to make a 36-1/2" square.
- Sew the 1" x 36-1/2" CX3615 Multi strips to the top and bottom of the quilt top. Sew one 1" x 37-1/2" CX3615 Multi strip to each side of the quilt top.
- Sew the 1" x 37-1/2" CX2489 White strips to the top and bottom of the quilt top. Sew one 1" x 38-1/2" CX2489 White strip to each side of the quilt top.
- Sew the 1" x 38-1/2" CX1488 White strips to the top and bottom of the quilt top. Sew one 1" x 39-1/2" CX1488 White strip to each side of the quilt top.
- Piece together the five 5-1/2" x WOF CX3562 Multi strips. Divide into four equal pieces.
- Center one 5-1/2" CX3562 Multi strip on one side of the quilt top. Start sewing the strip a 1/4" from the top edge of the quilt top and stop a 1/4" from the bottom edge. **DO NOT TRIM THE EXCESS.**
- Repeat with the remaining three sides, making sure to stop and start 1/4" away from each end of the quilt top.
- To miter each corner, fold the quilt top on a diagonal back sides together This should line up the strips from adjacent sides (Fig. 2).

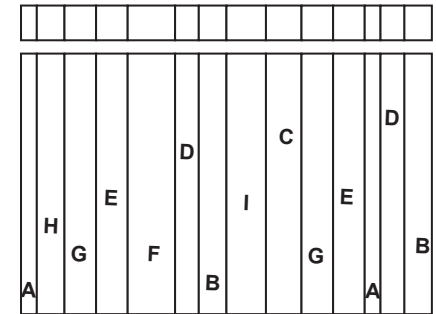


Fig. 1

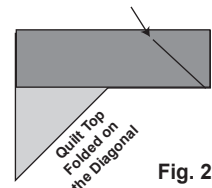
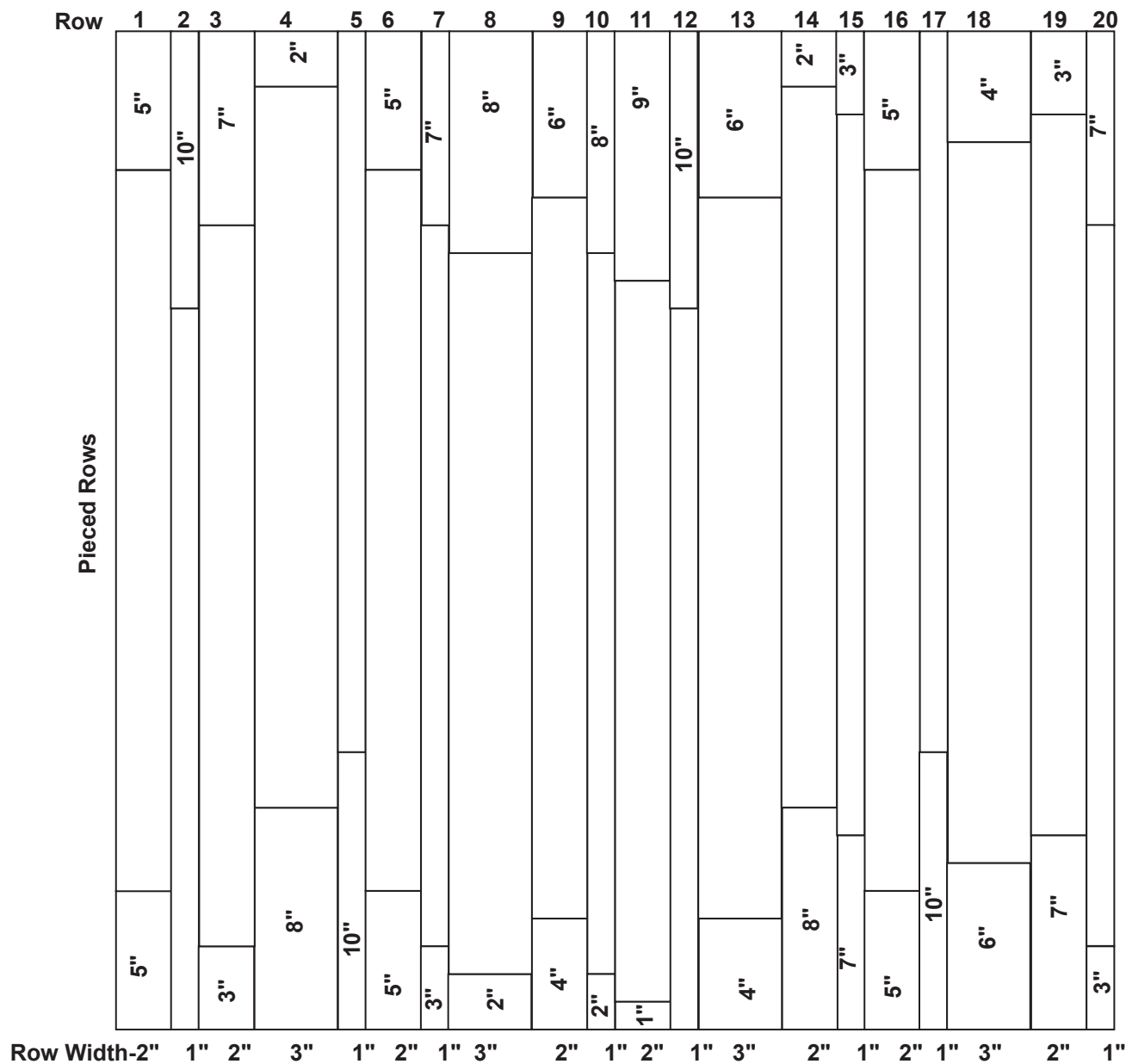


Fig. 2

- 12) Starting at the sewn seam (represented by the arrow in Figure 2 ) draw a 45° line out to the edge of the fabric. Sew on the drawn line. Trim the excess fabric leaving a 1/4" seam. Repeat this step with the remaining corners.
- 13) Following the manufacturer's directions, trace one bird, twenty-one leaves and two stems (1/2" x 17") onto the paper side of the fusible web. Roughly cut out each shape approximately a 1/4" outside the drawn lines .Press the traced patterns onto the back side of Jet Black material.
- 14) Cut out each shape on the drawn lines. Refer to the quilt photo and press the items on the quilt top as shown. Finish the raw edges of each applique with a decorative stitch such as a satin or buttonhole stitch.
- 15) Layer, quilt and bind as desired.

### Bohemian Bird Quilt Layout



**Bohemian Bird Templates**

**Reversed for Fusible Applique**

