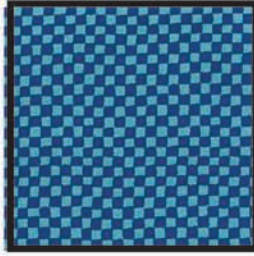


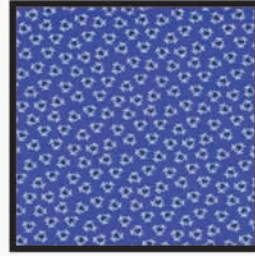
Fabric Requirements



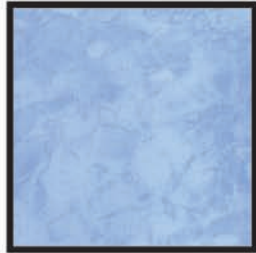
**CX3209 Azure
Belize Breeze**
1-3/8 yards



**CX0482 Blue Berry
Clown Check**
1/2 yard



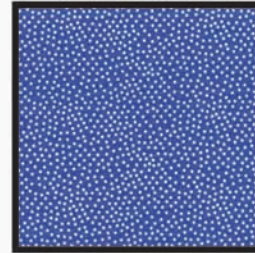
**CX3565 Azure
Bobbette**
1/2 yard



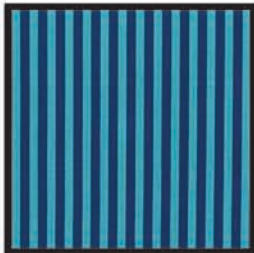
**K1062 Lt. Blue
Krystal**
1/2 yard



**CX3660 Iris
Pod Vine**
5/8 yard



**CX1065 Azure
Garden Pindot**
5/8 yard



**CX3584 Blueberry
Clown Stripe**
3/8 yard

Belize Breeze



Quilt measures approximately 48-1/2" x 48-1/2" Quilt designed by Marinda Stewart



118 West 22nd Street 5th Floor New York, NY 10011
Tel: 212-704-0774 Fax 212-633-0272 Email: info@michaelmillerfabrics.com
www.michaelmillerfabrics.com

Belize Breeze

Quilt designed by Marinda Stewart. Quilt measures approximately 48-1/2" x 48-1/2"

Always measure the quilt top before cutting border lengths.

| Fabric: | Yardage: | Cutting: |
|------------------|-----------------|---|
| CX3209 Azure | 1-3/8 yard* | See instructions to cut the flower appliqués. Cut fourteen 4-1/2" squares. |
| CX0482 Blueberry | 1/2 yard | Cut twenty-one 4-1/2" squares. |
| CX3565 Azure | 1/2 yard | Cut twenty-five 4-1/2" squares. |
| K1062 | 1/2 yard | Cut twenty-three 4-1/2" squares. |
| CX3660 Iris | 5/8 yard | Cut thirty-three 4-1/2" squares. |
| CX1065 Azure | 5/8 yard | Cut twenty-eight 4-1/2" squares. |
| CX3584 Blueberry | 3/8 yard | Cut five 2-1/4" x Width of Fabric (WOF) for binding. |

* Two complete panels are needed. Actual yardage is 47" long.

You will also need:

54" x 54" backing

54" X 54" batting

Fusible Web

Threads to match

Scissors, straight pins, acrylic ruler, mat, rotary cutter

Disclaimers

- This pattern is provided as a courtesy to quilt stores, catalogs and quilters. Michael Miller Fabrics, LLC is not responsible for the accuracy of any kits packaged to accompany this pattern. Please direct any inquires to the kit maker.
- Yardage requirements for this pattern may allow for excess yardage to accommodate specific placement of motifs or to allow for any fussy-cutting to achieve the finished quilt design.
- While every attempt has been made to give accurate measurements, yardage requirements and construction directions, this does not allow for personal variations in measuring, cutting and or sewing. the enclosed directions were used in the construction of the original quilt.

Assembly Instructions:

- 01) From CX3209 Azure roughly cut out two complete floral motifs outside the printed lines.
- 02) Refer to the quilt photo and cut each motif into two approximately equal pieces to make four floral motifs.
- 03) Turn over each floral motif with the back side facing up. Following manufacturer's directions, press a piece of fusible web around the outer edge of the floral motifs covering 2" to 3" of the fabric. Fussy cut the motifs along the printed lines as shown. Set aside.
- 04) Assemble the 4-1/2" squares of CX3209, CX0482, CX3565, K1062, CX3660 and CX1065 randomly into nine 16-patch blocks, measuring 16-1/2" square.
- 05) Sew 16-patch blocks together into three rows of three blocks.
- 06) Sew rows together to make a quilt background, measuring 48-1/2" x 48-1/2".
- 07) Arrange floral motifs in the center of the quilt background as shown to make a wreath shape. Machine applique the motifs in place using a decorative stitch such as a buttonhole or satin stitch.
- 08) Layer, quilt, and bind as desired.