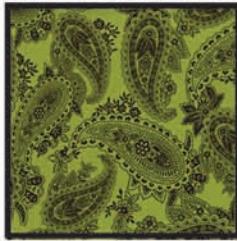


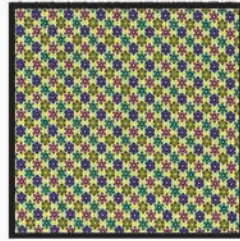
Fabric Requirements



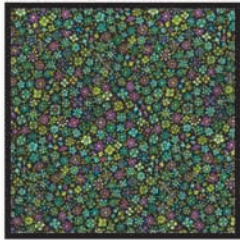
**CX3680 Black
Nouveau Stripe**
2-1/2 yards



**CX3197 Pistachio
Peggy Paisley**
3/8 yard



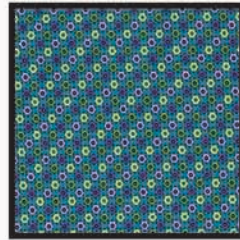
**CX3319 Kiwi
Madeline**
3/8 yard



**CX3412 Orchid
Flowers of Fez**
3/8 yard



**CX3199 Kiwi
Patti Paisley**
3/8 yard



**CX3319 Turquoise
Madeline**
1/6 yard



**CX3679 Black
Feline Divas**
1/4 yard



**CX3678 Black
Lounge Cat**
1/4 yard



Jet Black
5/8 yard

Art Nouveau Cats



Quilt measures approximately 50" x 50"

Quilt designed by Marinda Stewart



118 West 22nd Street 5th Floor New York, NY 10011
Tel: 212-704-0774 Fax 212-633-0272 Email: info@michaelmillerfabrics.com
www.michaelmillerfabrics.com

Art Nouveau Cats

Quilt designed by Marinda Stewart. Quilt measures approximately 50" x 50"

Always measure the quilt top before cutting border lengths.

| Fabric: | Yardage: | Cutting: |
|------------------------|----------------------|--|
| CX3197 Pistachio | 3/8 yard | Cut sixteen 4-1/2" squares. |
| CX3319 Kiwi | 3/8 yard | Cut sixteen 4-1/2" squares. |
| CX3412 Orchid | 3/8 yard | Cut sixteen 4-1/2" squares. |
| CX3199 Kiwi | 3/8 yard | Cut sixteen 4-1/2" squares. |
| CX3679 Black | 1/4 yard | See instruction to cut purple medallions. |
| CX3680 Black | 2-1/2 yards | Cut four 8-1/4" x 53" lengths, matching the stripe pattern in each length. Cut twelve 1-1/2" x 7" strips and three 1-1/2" x 31-1/2" centered on the orange stripe. Fussy cut two 3/4" x 31-1/2" strips and two 3/4" x 32-1/4" strips, centered on the small orange square stripe. Fussy cut two 3/4" x 34-1/2" strips and 3/4" x 35-1/4" strips, centered on the small fuchsia dot stripe. |
| CX3319 Turquoise | 1/6 yard | Cut two 1-3/4" x 32-1/4" strips and two 1-3/4" x 34-1/2" strips. |
| CX3678 Black Jet Black | 1/4 yard 5/8 yard | See instructions to fussy cut the tab arches Cut six 2-1/4" x WOF (Width of Fabric) strips for binding. See instruction to cut the cats |

You will also need:

45" x 55" backing

45" X 55" batting

Fusible Web

Threads to match

Scissors, straight pins, acrylic ruler, mat, rotary cutter

Disclaimers

- This pattern is provided as a courtesy to quilt stores, catalogs and quilters. Michael Miller Fabrics, LLC is not responsible for the accuracy of any kits packaged to accompany this pattern. Please direct any inquires to the kit maker.
- Yardage requirements for this pattern may allow for excess yardage to accommodate specific placement of motifs or to allow for any fussy-cutting to achieve the finished quilt design.
- While every attempt has been made to give accurate measurements, yardage requirements and construction directions, this does not allow for personal variations in measuring, cutting and or sewing. the enclosed directions were used in the construction of the original quilt.

Assembly Instructions:

- To make one pinwheel block, Place one 4-1/2" CX3197 Pistachio square on top of one 4-1/2" CX3319 Kiwi square, right sides together. Draw a diagonal line from one corner to the opposite corner (Fig. 1). Sew 1/4" on each side of the drawn line (Fig.1). Cut apart the sewn squares on the drawn line (Fig 2) to make two half-square triangles (Fig. 3). Trim each square to an accurate 4" square. Repeat to make thirty-two "A" half-square triangles.
- Repeat Step 1 using sixteen 4-1/2" CX3412 Orchid squares and sixteen 4-1/2" CX3199 Kiwi squares to make thirty-two "B" half-square triangles.
- Follow the pinwheel block layout to sew together sixteen pinwheel blocks.

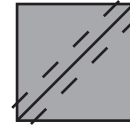


FIG. 1

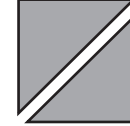


FIG. 2

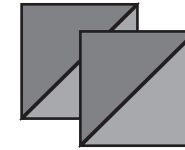
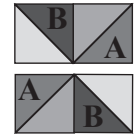


FIG. 3

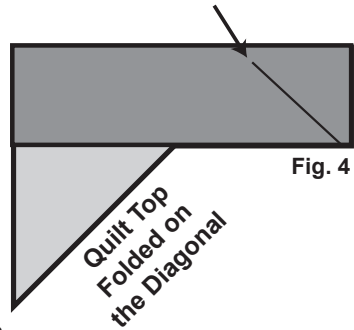


Pinwheel Block

- From CX3679 Black roughly cut sixteen purple medallions about a 1/4" outside the printed line. Following manufacturer's directions, press fusible web to the back of each medallion. Cut out each medallion on the printed lines. Press one medallion to the center of each pinwheel block. Stitch around the raw edges of each medallion with a decorative stitch such as a satin or buttonhole stitch.
- Starting and ending with a pinwheel block, sew together four pinwheel blocks and three 1-1/2" x 7-1/2" CM3680 Black strips, alternating them to make one row. Make four pinwheel rows total.
- Starting and ending with a pinwheel row, sew together the four pinwheel rows and three 1-1/2" x 31-1/2" CM3680 Black strips, alternating them to make a 31-1/2" square quilt top.
- Roughly cut out four 2" circles and five 1-1/2" circles about a 1/4" outside the printed lines from CX3678 Black. Press fusible web onto the back of each circle. Cut out the circles on the printed lines.
- Refer to the quilt photo for placement to press the four 2" and five 1-1/2" circles at each sashing intersection of the pinwheel blocks. Finish the raw edges with a decorative stitch.
- Sew one 3/4" x 31-1/2" CX3680 Black strip to each the top and bottom of the quilt top. Sew one 3/4" x 32-1/2" CX3680 Black strip to each side of the quilt top.
- Sew one 1-3/4" x 32-1/4" CX3319 Turquoise strip to each the top and bottom of the quilt top. Sew one 1-3/4" x 34-1/2" CX3319 Turquoise strip to each side of the quilt top.
- Sew one 3/4" x 34-1/2" CX3680 Black strip to each the top and bottom on the quilt top. Sew one CX3680 Black 3/4" x 35-1/4" strip to each side of the quilt top.
- Center one 8-1/4" x 53" CX3680 strip on one side of the quilt top. Start sewing the strip a 1/4" from the top edge of the quilt top and stopping a 1/4" from the bottom edge. DO NOT TRIM THE EXCESS.
- Repeat with the remaining three sides, making sure to stop and start 1/4" away from each end of the quilt top.

Assembly Instructions:

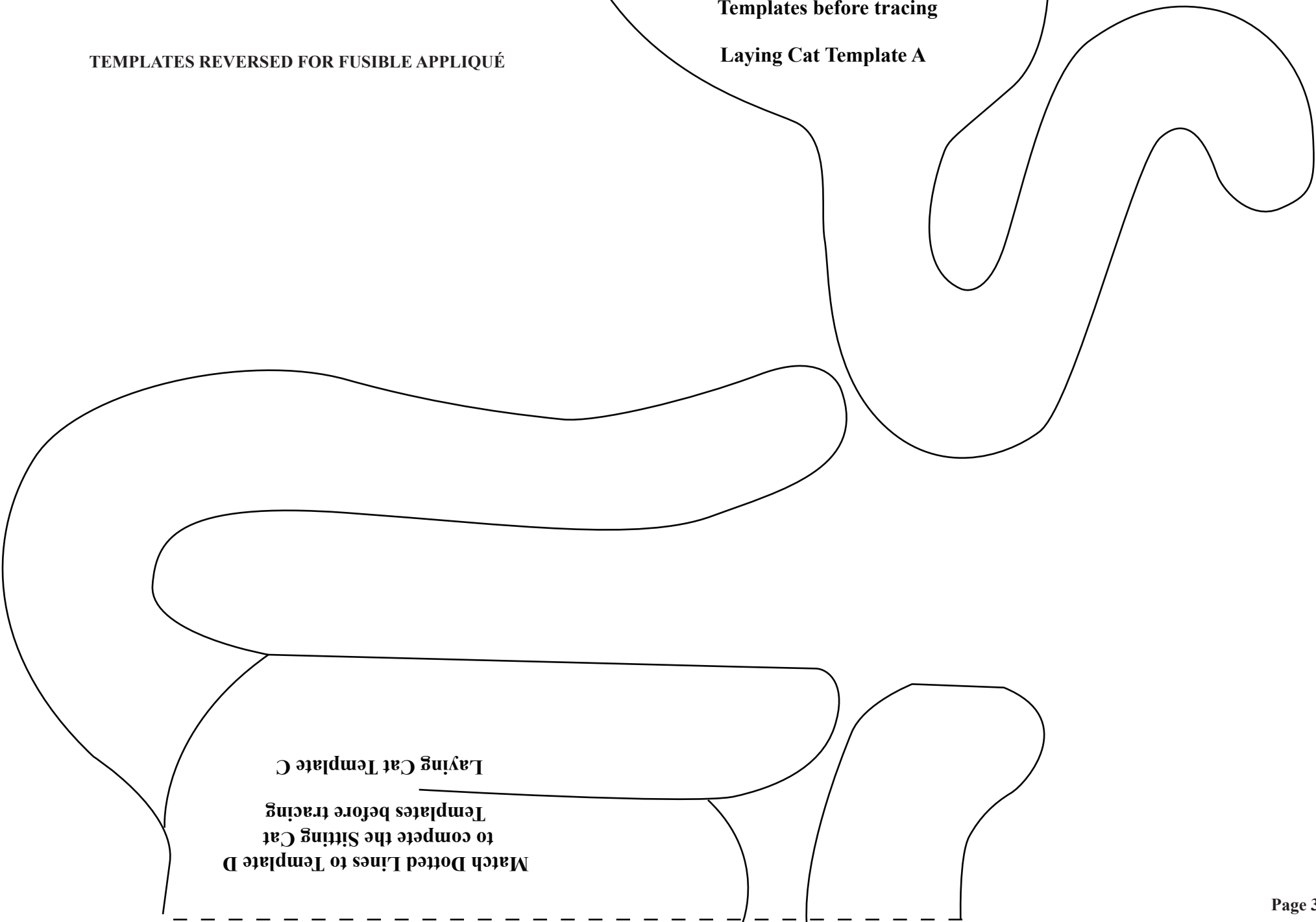
- 14) To miter each corner, fold the quilt top on a diagonal back sides together. This should line up the strips from adjacent sides (Fig. 4).
- 15) Starting at the sewn seam (represented by the arrow in Figure 4) draw a 45° line out to the edge of the fabric. Sew on the drawn line. Trim the excess fabric leaving a 1/4" seam. Repeat this step with the remaining corners.
- 16) Roughly cut four tab arches about a 1/4" outside the printed lines from CX3678 Black. Press fusible web onto the back side of each. Cut out the arches on the printed lines. Refer to the quilt photo to press the arches to the quilt top in the center of each side, at the edge of the blocks.
- 17) Following the manufacturer's instructions to trace the cat templates onto the paper side of the fusible web. Roughly cut out each template about a 1/4" outside the drawn lines. Press the templates onto the Jet Black fabric. Cut out each cat on the drawn lines.
- 18) Refer to the quilt photo and press each cat to the quilt top. Using a decorative stitch applique the cats to the quilt top, using contrasting thread and adding details as shown.
- 19) From a small piece of green (or background of CX3199) fussy cut cats' eyes. Back each eye with fusible web and cut them out. Appliqué the eyes to each cat as shown.
- 20) Layer, quilt and bind as desired.



TEMPLATES REVERSED FOR FUSIBLE APPLIQUÉ

Match Dotted Lines to Template B
to compete the Laying Cat
Templates before tracing

Laying Cat Template A

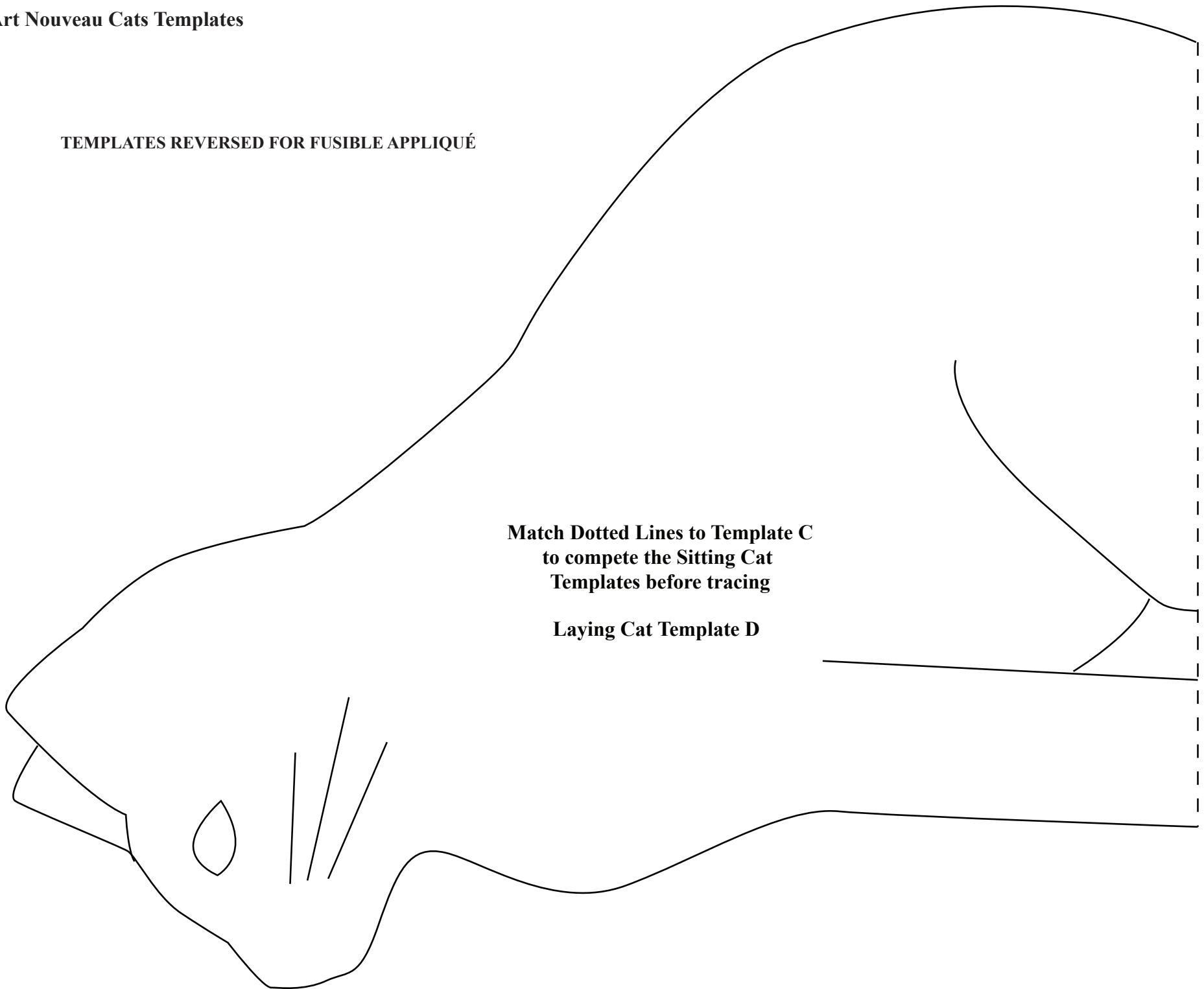


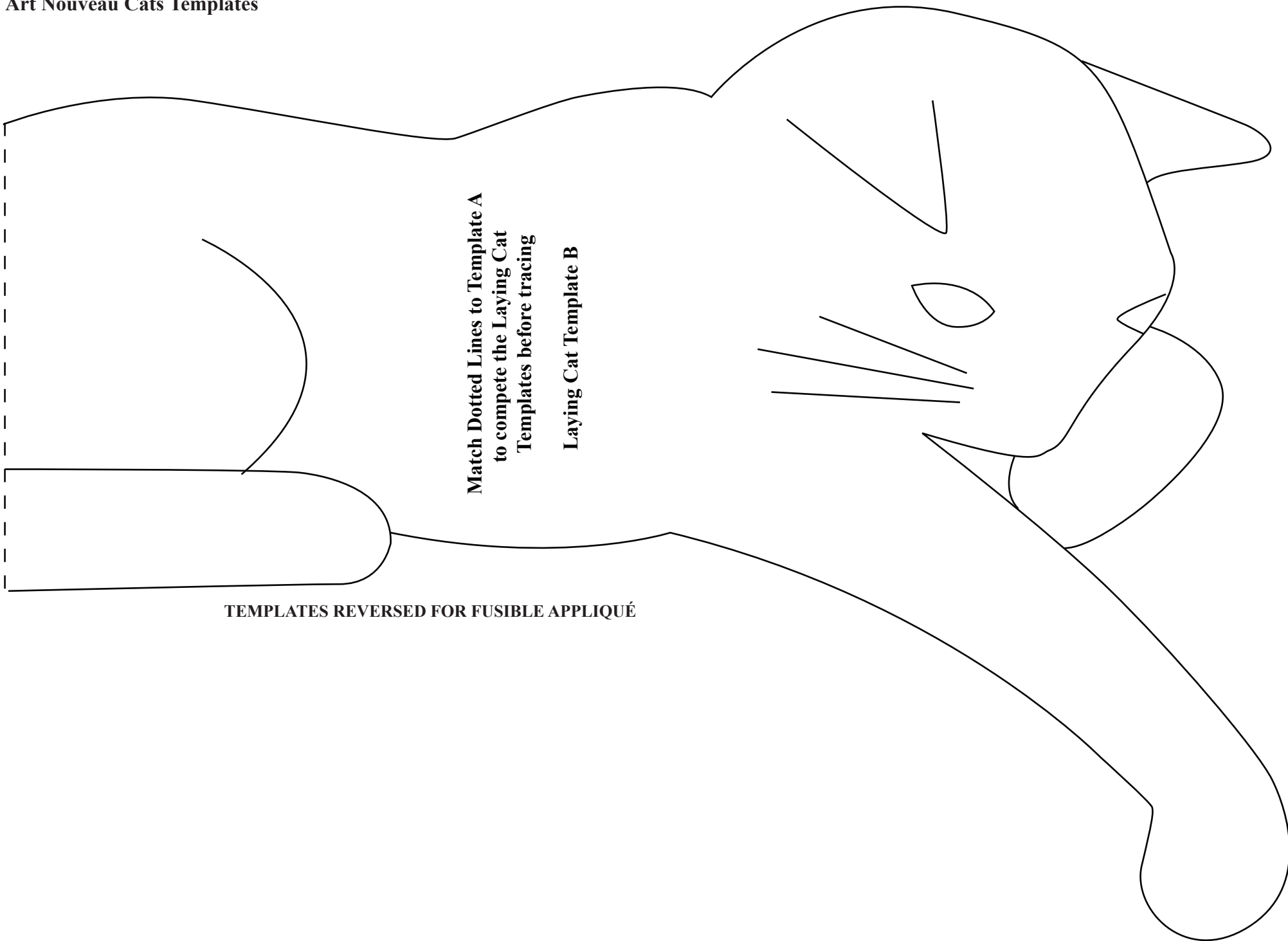
Match Dotted Lines to Template D
to compete the Sitting Cat
Templates before tracing

Laying Cat Template C

TEMPLATES REVERSED FOR FUSIBLE APPLIQUÉ

Match Dotted Lines to Template C
to complete the Sitting Cat
Templates before tracing
Laying Cat Template D





**Match Dotted Lines to Template A
to complete the Laying Cat
Templates before tracing**

Laying Cat Template B

TEMPLATES REVERSED FOR FUSIBLE APPLIQUÉ