

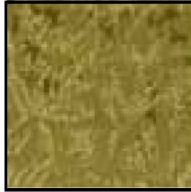
## Fabric Requirements



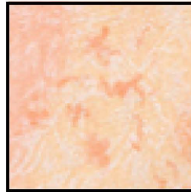
DC3936 Blossom  
The Apple Blossom Fairy  
Full Panel



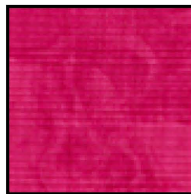
CM0376 Antique  
Fairy Frost  
1 yard



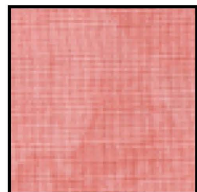
CM0376 Pistachio  
Fairy Frost  
1/2 yard



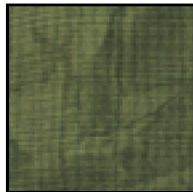
CM0376 Creamside  
Fairy Frost  
1/4 yard



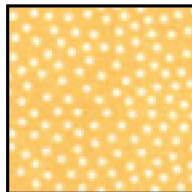
K1233 Krystal  
8" x 12" piece



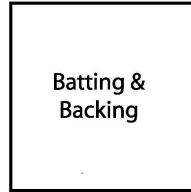
K1047 Krystal  
12" x 20" piece



K1156 Krystal  
12" x 20" piece



CX1065 Banana  
Garden Pindot  
6" x 3" piece



55" x 48"

## THE APPLE BLOSSOM FAIRY



Designed by Marinda Stewart



118 West 22nd Street 5th Floor New York, NY 10011  
Tel: 212.704.0774 Fax: 212.633.0272 Email: info@michaelmillerfabrics.com  
www.michaelmillerfabrics.com

# Apple Blossom Fairy

Quilt designed by Marinda Stewart. Quilt measures approximately 43-1/2" x 51"

**Always measure the quilt top before cutting border lengths.**

<b>Fabric:</b>	<b>Yardage:</b>	<b>Cutting:</b>
DC3936 Blossom	2/3 yard*	Cut the panel to measure 23-3/4" x 44" or 1/4" seam allowance on all four sides of the panel.
CM0376 Creamsicle	1/4 yard	Cut two 1-1/2" x 44" strips and two 1-1/2" x 25-3/4" strips.
CM0376 Pistachio	1/2 yard	Cut two 1" x 25-3/4" strips and two 1" x 47" strips (piece as needed). Cut five 2-1/4" x width of fabric (WOF) strips for the binding.
CM0376 Antique	1 yard	Cut two 2-1/2" x 26-3/4" strips and two 8-1/2" x 51" strips (piece as needed).
K1156 Green	12" x 20"	See instructions for appliquéd leaves.
K1047 Peach	12" x 20"	See instructions for appliquéd petals.
K1233 Dark Pink	8" x 12"	See instructions for the appliquéd inner petals
CX1065 Banana	3" x 6"	See instructions for the appliquéd flower centers.

## You will also need:

48" x 55" backing

48" X 55" batting

Fusible Web

Threads to match

OPTIONAL: Applique Pressing Sheet

Scissors, straight pins, acrylic ruler, mat, rotary cutter

\* Or amount needed for one complete repeat.

## Disclaimers

- This pattern is provided as a courtesy to quilt stores, catalogs and quilters. Michael Miller Fabrics, LLC is not responsible for the accuracy of any kits packaged to accompany this pattern. Please direct any inquires to the kit maker.
- Yardage requirements for this pattern may allow for excess yardage to accommodate specific placement of motifs or to allow for any fussy-cutting to achieve the finished quilt design.
- While every attempt has been made to give accurate measurements, yardage requirements and construction directions, this does not allow for personal variations in measuring, cutting and or sewing. the enclosed directions were used in the construction of the original quilt.

## Assembly Instructions:

- 01) Sew one 1-1/2" x 44" CM0376 Creamsicle strip to each side of the DC3936 panel. Sew one 1-1/2" x 25-3/4" CM0376 Creamsicle strip to the top and bottom of the DC3936 Panel to make the quilt top.
- 02) Sew one 1" x 25-3/4" CM0376 Pistachio strip to the top and bottom of the quilt top. Sew one 1" x 47" CM0376 Pistachio strip to each side of the quilt top.
- 03) Sew one 2-1/2" x 26-3/4" CM0376 Antique strip to the top and bottom of the quilt top. Set the quilt top aside.
- 04) Following the manufacturer's instructions, trace eight large leaves, seven small leaves and two calyx on the paper side of the fusible web. Iron the drawn templates onto the back side of the 12" x 20" K1156 Green fabric. Cut out each shape on the drawn lines. Set aside.
- 05) Trace seven flower centers on the fusible web and iron the templates onto the back side of the CX1065 Banana fabric. Cut out each shape on the drawn lines. Set aside.
- 06) Trace four small flowers, three large flowers and two small buds onto the fusible web. Iron the templates onto the back side of the K1047 Peach fabric. Cut out each shape on the drawn lines. Set aside.
- 07) Trace four small inner petals, three large inner petals and two large bud petals onto the fusible web. Press the templates to the back side of K1233. Cut out each shape on the drawn lines.
- 08) To assemble the applique flowers, refer to the quilt photo and match the inner petal pieces to each larger flower. Place the flower centers in the middle of each.  
OPTIONAL: Use an Applique Pressing Sheet to assemble the flowers on.
- 09) Arrange the flowers on each 8-1/2" x 51" CM0376 Antique strip as shown or as desired. Machine satin stitch around all the edges of the appliquéd pieces. Add a center vein to each flower with a satin stitch. Three rows of straight stitched veins have been added to each flower petal. Add the buds with calyx as shown to the flower clusters and finish the raw edges.
- 10) Sew one panel to each side of the quilt top.
- 11) Layer and quilt as desired.
- 12) Bind the quilt using the 2-1/4" x WOF CM0376 Pistachio strips as desired.

# Apple Blossom Fairy Templates

