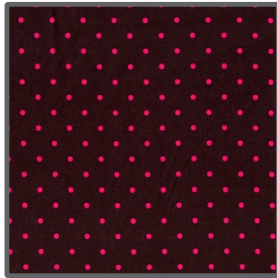


FABRIC REQUIREMENTS



**DC3904 Fire
Tiny Dots**
1 yard



**DC3898 Fire
Flowery Stripe**
7/8 yard



**DC3902 Kiwi
Flora**
3/8 yard



**DC3899 Fire
Birdie Damask**
3/8 yard



**DC3903 Kiwi
Jester**
1/4 yard



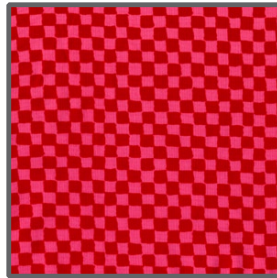
**DC3896 Earth
Moorish Tile**
1/4 yard



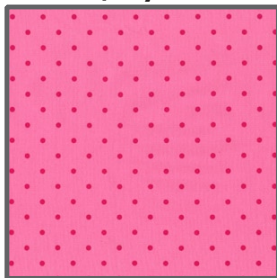
**CX0482 Espresso
Clown Check**
1/4 yard



**DC3900 Earth
Mod Dots**
1/6 yard



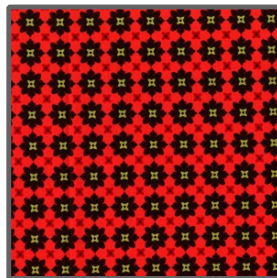
**CX0482 Peppermint
Clown Check**
1/6 yard



**DC3904 Petal
Tiny Dots**
1/8 yard



**CX3584 Espresso
Clown Stripe**
1/8 yard



**DC3897 Earth
Tiny Flower**
1/8 yard



Size: Approximately 40"W x 51 1/2"H **Quilt designed by Marinda Stewart**
Skill Level: Beginner



118 West 22nd Street 5th Floor New York, NY 10011
Tel: 212.704.0774 Fax: 212. 633. 0272 email: info@michaelmillerfabrics.com

www.michaelmillerfabrics.com

Backing 45" x 55" and Batting 45" x 55"

“AndaLucia”
Quilt by Marinda Stewart

Size: Approximately 40”W x 51 1/2”H - Skill Level: Beginner

Materials

Fabric	Yardage	Cutting
Tiny Dots DC3904 Fire	1 yard	Cut (2) 3 1/2" x 34" *Cut (2) 3 1/2" x 51 1/2" *Cut (5) 2 1/4" x Width Of Fabric
Flowery Stripe DC3898 Fire	7/8 yard	**Cut (1) 4 3/4" W x 28 1/2" H Cut (1) 5 7/8" W x 28 1/2" H Cut (2) 2 1/2" x 34" Cut (2) 2 1/2" x 42"
Flora DC3902 Kiwi	3/8 yard	Cut (2) 2 1/2" x 34" Cut (2) 2 1/2" x 42"
Birdie Damask DC3899 Fire	3/8 yard	***Cut (1) 8 1/2" x 28 1/2" Cut (2) 1 1/4" x 28 1/2" Cut (2) 1 1/2" x 28 1/2"
Jester DC3903 Kiwi	1/4 yard	***Cut (2) 2 5/8" x 28 1/2"
Moorish Tile DC3896 Earth	1/4 yard	***Cut (1) 5 1/4" x 28 1/2"
Clown Check CX0482 Espresso	1/4 yard	Cut (2) 5-rows x 28 1/2" Cut (2) 5-rows x 42"
Mod Dots DC3900 Earth	1/6 yard	Cut (1) 4 1/2" x 28 1/2" (2 rows of circles)
Clown Check CX0482 Peppermint	1/6 yard	Cut (2) 5-rows x 28 1/2"
Tiny Dots DC3904 Petal	1/8 yard	Cut (2) 1 1/2" x 28 1/2"
Clown Stripe CX3584 Espresso	1/8 yard	Cut (2) 1" x 28 1/2"
Tiny Flower DC3897 Earth	1/8 yard	Cut (2) 1 1/2" x 28 1/2"
<p>* Piece as needed for length ** Cut vertically with the strip *** Center motif as desired</p>		
<p>Additional Materials: 45" x 55" Backing, 45" x 55" Batting, Thread to match, Straight Pins, Scissors, Acrylic Ruler, Rotary Cutter, and Mat.</p>		

Disclaimers

This pattern is provided as a courtesy to quilt stores, catalogs, and quilters. Michael Miller Fabrics, LLC is not responsible for the accuracy of any kits packaged to accompany this pattern. Please direct any inquiries to the kit maker.

Yardage requirements for this pattern may allow for excess yardage to accommodate specific placement of motifs or to allow for any fussy-cutting to achieve the finished quilt design.

While every attempt has been made to give accurate measurements, yardage requirements, and construction directions; this does not allow personal variations in measuring, cutting, and or sewing. The enclosed directions were used in the construction of the original quilt.

Directions

- Starting at the top the 28 1/2" strips are sewn together in the following sequence : DC3898 4 3/4", DC3904 (Brown/Pink) 1 1/2", DC3904 (Pink/Dark Pink) 1 1/2", DC3897 1 1/2", DC3903 2 5/8", CX3584 1", DC3896 5 1/4", CX0482 Peppermint (5) rows, DC3904 (Brown/Pink) 1 1/4", DC3899 8 1/2", DC3904 (Brown/Pink) 1 1/4", CX0482 Peppermint (5) rows, DC3900 4 1/2", DC3904 (Pink/Dark Pink) 1 1/2", DC3904 (Brown/Pink) 1 1/2", DC3898 5 7/8", CX3584 1", DC3903 2 5/8", and DC3897 1 1/2".
- Border #1 - sew CX0482 Espresso 5 rows x 28 1/2" to the top and bottom of the quilt. Sew CX0482 Espresso 5 rows x 42" to each side of the quilt.
- Border #2 - sew DC3902 Kiwi 2 1/2" x 42" to each side. Sew DC3902 Kiwi 1/2" x 34" to the top and bottom.
- Border #3 - sew DC3904 (Red/Orange) 3 1/2" x 34" to the top and bottom. Sew DC3904 (Red/Orange) 3 1/2" x 51 1/2" pieces to each side.
- Layer backing, batting, and quilt Top. Baste.
- Quilt as desired.
- Bind with DC3904 (Red/Orange) to finish.