

# FABRIC REQUIREMENTS

# ALFABETO ITALIANO



**CX4397 Black Parole Italiano**  
7/8 yard



**CX4396 Cream Grande Alfabeto**  
7/8 yard



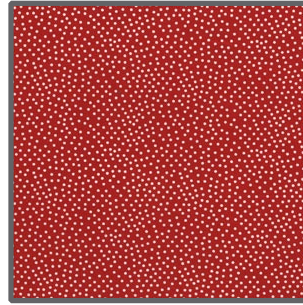
**CX1684 Mustard Cha Cha Stripe**  
1/2 yard



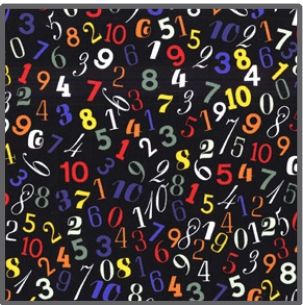
**CX3137 Retro Play Stripe**  
1/2 yard



**CX4395 Multi Blocks Italiano**  
1 1/2 yards



**CX1065 Cherry Garden Pindot**  
1 1/4 yards



**CX4399 Black Numeri Piccoli**  
1 3/4 yards



Size: Approximately 57"W x 62"H

Quilt designed by Heidi Pridemore



118 West 22nd Street 5th Floor New York, NY 10011  
Tel: 212.704.0774 Fax: 212. 633. 0272 email: info@michaelmillerfabrics.com

www.michaelmillerfabrics.com

**Backing: 3 1/4 yards**

# Alphabeto Italiano

Quilt designed by Heidi Pridemore. Quilt measures approximately 51" x 56"

***Always measure the quilt top before cutting border lengths.***

<b>Fabric:</b>	<b>Yardage:</b>	<b>Cutting:</b>
CX4397 Black	7/8 yard	• See instructions to fussy cut six diamonds • See instructions to fussy cut six diamonds • Cut one 12-1/2" x width of fabric (WOF) strip. Sub-cut the strip into six 6-1/2" x 12-1/2" strips.
CX4396 White	7/8 yard	
C1684 Yellow	1/2 yard	
CX3137 Retro	1/2 yard	• Cut one 12-1/2" x WOF strip. Sub-cut the strip into six 6-1/2" x 12-1/2" strips.
CX4395 Multi	1-1/2 yards	• Fussy Cut the letter blocks vertically into four 4-3/4" x 48-1/2" strips.
C1065 Red	1-1/4 yards	• Cut fifteen 1-1/2" x WOF strips. Piece the strips together to make eight 1-1/2" x 48-1/2" strips and two 1-1/2" x 43-1/2" strips for the sashing. • Cut six 2-1/2" x WOF strips for the binding.
CX4399 Black	1-3/4 yards	• Cut three 3-1/2" x WOF strips. Piece the strips together to make two 3-1/2" x 51-1/2" strips. • Cut two 3-1/2" x 50-1/2" strips from the length of fabric.

## **You will also need:**

59" x 64" backing

59" X 64" batting

Threads to match

Scissors, straight pins, acrylic ruler, mat, rotary cutter

2 yards of Fusible Web

## **Disclaimers**

• This pattern is provided as a courtesy to quilt stores, catalogs and quilters. Michael Miller Fabrics, LLC is not responsible for the accuracy of any kits packaged to accompany this pattern. Please direct any inquires to the kit maker.

• Yardage requirements for this pattern may allow for excess yardage to accommodate specific placement of motifs or to allow for any fussy-cutting to achieve the finished quilt design.

• While every attempt has been made to give accurate measurements, yardage requirements and construction directions, this does not allow for personal variations in measuring, cutting and or sewing. the enclosed directions were used in the construction of the original quilt.

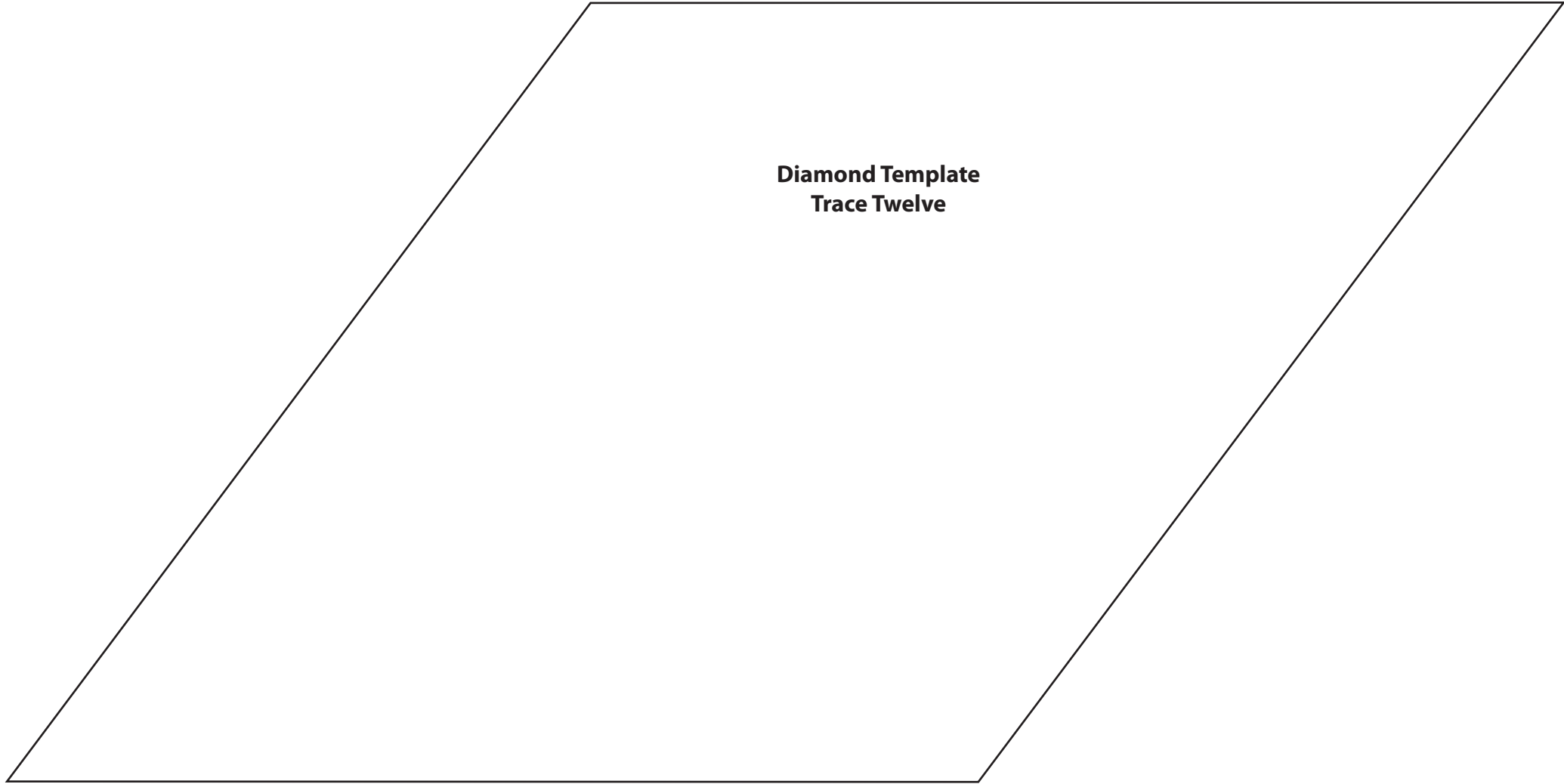
## **Assembly Instructions:**

### **Diamond Block Rows-**

- 1) Following the manufacturer's instructions, trace twelve diamond templates onto the paper side of the fusible web. Roughly cut out each shape 1/8" outside the drawn lines.
- 2) Position six diamonds on the back side of CX4396 White with a letter centered in each. Press the diamonds in place. Cut out each diamond on the drawn lines.
- 3) Press each diamond onto the center of one 6-1/2" x 12-1/2" CX1684 yellow strip. Finish the raw edges of each diamond with a decorative stitch such as a satin or buttonhole stitch.
- 4) Position six diamonds on the back side of CX4397 Black with an image centered in each. Press the diamonds in place. Cut out each diamond on the drawn lines.
- 5) Press each diamond onto the center of one 6-1/2" x 12-1/2" CX3137 Retro strip. Finish the raw edges of each diamond with a decorative stitch such as a satin or buttonhole stitch.
- 6) Starting with one black diamond block, sew together two black diamonds and two white diamonds, alternating them for the first and third diamond rows.
- 7) Starting with one white diamond block, sew together two white diamonds and two black diamonds, alternating them for the middle diamond row.

### **Quilt Top Assembly-**

- 8) Sew one 1-1/2" x 48-1/2" C1065 Red strip to each side of the 4-3/4" x 48-1/2" CX4395 Multi to complete a Letter Row. Repeat to make four letter rows total.
- 9) Starting and ending with one letter row, sew together the four letter rows and three diamond rows, alternating them to make the quilt top.
- 10) Sew one 3-1/2" x 50-1/2" CX4399 Black strip to each side of the quilt top.
- 11) Sew one 3-1/2" x 51-1/2" CX4399 Black strip to the top and bottom of the quilt top.
- 12) Layer, quilt and bind as desired.



**Diamond Template  
Trace Twelve**