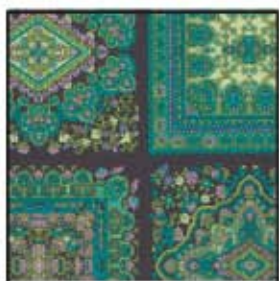


Fabric Requirements



CX3270 Orchid
Marrakesh
1-3/4 yard



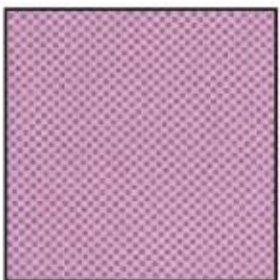
CX3319 Turq
Madeline
1 yard



CX3284 Kiwi
Milano
3/8 yard



CX3284 Blossom
Milano
3/8 yard



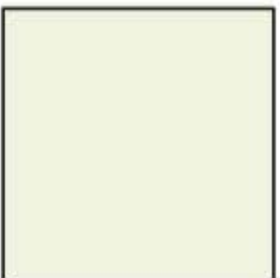
CX3318 Orchid
Mae
3/8 yard



Jet Brown
3/8 yard



CX3319 Kiwi
Madeline
3/8 yard



Backing and Batting
54"x54"

MARRAKESH TILES



Finished quilt is approximately 48" x 48"

Skill Level: Confident Beginner

Designed by Marinda Stewart



118 West 22nd Street 5th Floor New York, NY 10011

Tel: 212.704.0774 Fax: 212.633.0272 Email: info@michaelmillerfabrics.com

www.michaelmillerfabrics.com