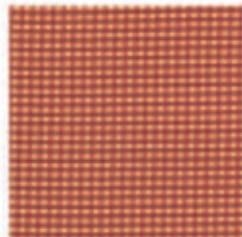


Fabric Requirements

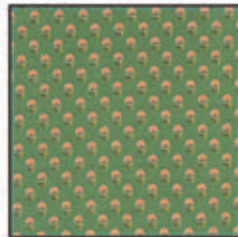
Backing: 58" x 58"



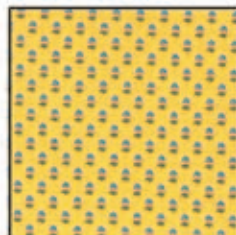
CX3322 Red
Martha
3/4 yard



CX3248 Provence
Kid Check
1 yard



CX3320 Sage
Mabel
1/2 yard



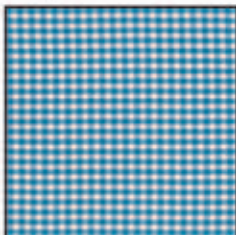
CX3320 Yellow
Mabel
1/2 yard



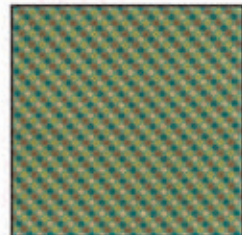
CX3324 Yellow
Marabel
1/2 yard



CX3322 Sage
Martha
1/2 yard



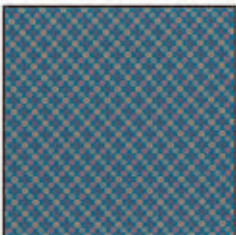
CX3248 Denim
Kid Check
1/4 yard



CX3319 Green
Madeline
1/6 yard



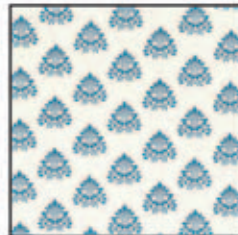
CX3323 Sunny
Mary
1/6 yard



CX3319 Blue
Madeline
1/4 yard



CX3318 Provence
Mae
1/6 yard



CX3323 Powder
Mary
1/2 yard

French Country Quilt

Designed By Marinda Stewart



Finished Quilt approximately 50" x 50" • Skill Level: Intermediate



118 West 22nd Street 5th Floor New York, NY 10011

Tel: 212.704.0774 Fax: 212.633.0272 Email: info@michaelmillerfabrics.com

www.michaelmillerfabrics.com