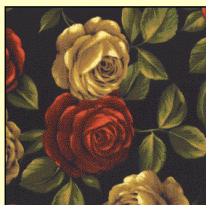


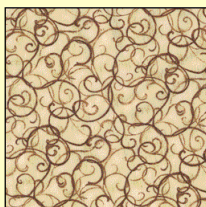
## Fabric Requirements



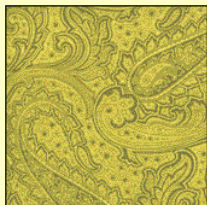
Finished quilt approximately 49 1/2"x49 1/2"



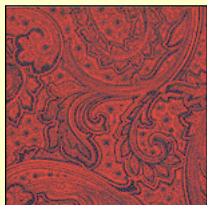
CX2853 Black  
Jessica's Garden  
5/8 yard



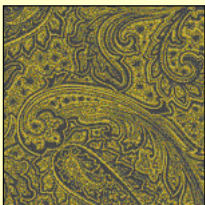
CX2801 Cream  
Scroll Swirls  
1/2 yard



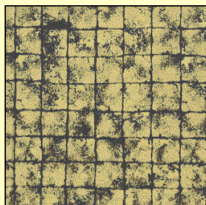
CX2678 Gold  
Sophisticated Paisley  
1/2 yard



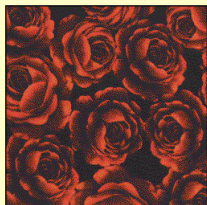
CX2678 Red  
Sophisticated Paisley  
1/2 yard



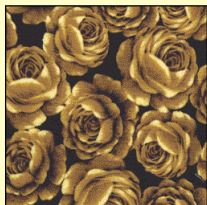
CX2678 Mustard  
Sophisticated Paisley  
1/4 yard



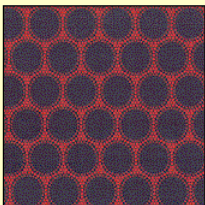
CM2822 Black  
Gold Tiles  
3/8 yard



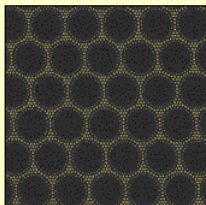
CX2854 Red  
Jessica's Bouquet  
1/2 yard



CX2854 Tan  
Jessica's Bouquet  
1/2 yard



CX2879 Red  
Seeds  
1/2 yard



CX2879 Olive  
Seeds  
1 1/2 yards  
(includes binding)+  
3 yards for backing



# Jessica's Garden

Designed by Marinda Stewart

**Michael Miller Fabrics LLC.**

118 West 22nd Street 5th Floor, New York, NY 10011

Tel. 212-704-0774 Fax. 212-633-0272

[mmf@michaelmillerfabrics.com](mailto:mmf@michaelmillerfabrics.com)

[www.michaelmillerfabrics.com](http://www.michaelmillerfabrics.com)