

Fabric Requirements



Ginger Tile
SH3506 Avocado
1/3 yard



Ginger Tile
SH3506 Caribe
1/4 yard



Ginger Tile
SH3506 Breeze
1/6 yard



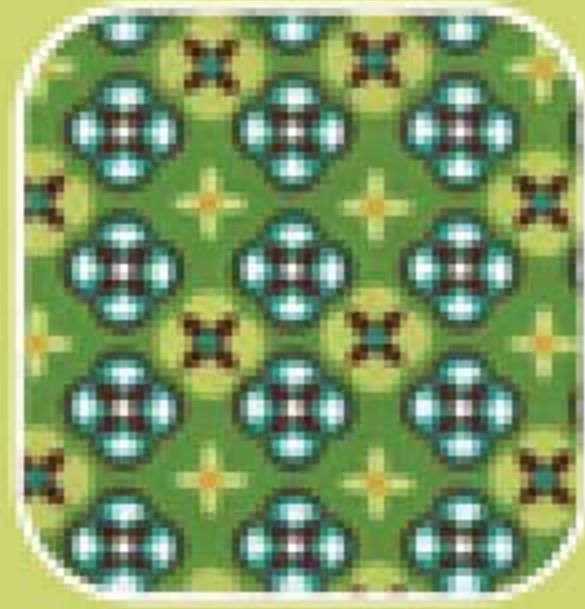
Bouquet
SH3508 Lime
1/4 yard



Bouquet
SH3508 Blush
1/6 yard



Tortoise Plaid
SH3510 Breeze
1/6 yard



Tortoise Plaid
SH3510 Meadow
1/3 yard



Water Lily
SH3511 Blush
1/4 yard



Water Lily
SH3511 Meadow
1/4 yard



Lei
SH3507 Breeze
1/6 yard



Vintage Stripe
SH3313 Blush
1/4 yard



Vintage Dots
SH3514 Blush
1/6 yard



Vintage Dots
SH3514 Breeze
1/4 yard



Vintage Dots
SH3514 Caribe
1/6 yard



Vintage Dots
SH3514 Lime
1/6 yard



Blossom Buds
SH3515 Avocado
1/6 yard



Blossom Buds
SH3515 Breeze
1/4 yard



Blossom Buds
SH3515 Caribe
1/3 yard



Blossom Buds
SH3515 Mustard
1/6 yard



Krystal
K1145
3/4 yard



Krystal
K1002
1/3 yard



Krystal
K1053
1 yard



Backing
K1002
50" x 50"



Batting
50" x 50"

Designed by Sandy Henderson

Ginger Blossom



Finished quilt is approximately 51" x 51"

Skill Level: Intermediate

118 West 22nd Street 5th Floor New York, NY 10011
Tel: 212.704.0774 Fax: 212.633.0272 Email: info@michaelmillerfabrics.com
www.michaelmillerfabrics.com