

A Child's Life

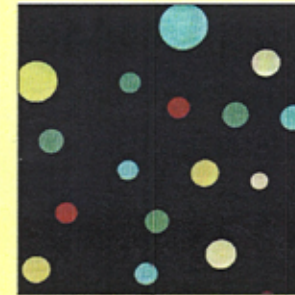
Quilt Design by Mimi Shimp



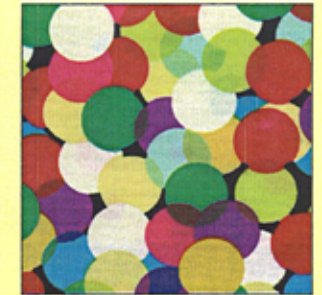
Fabric Requirements



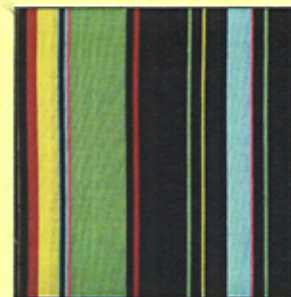
C1957 Primary
A Child's Life
1 yard



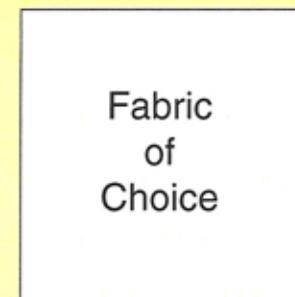
C1338 Black
Party Dot
 $\frac{1}{8}$ yard



C1400 Retro
Spotlight
1 yard



C323 Retro
Stripe
 $3\frac{1}{2}$ yards



Backing
 $41\frac{1}{2}$ " x $50\frac{1}{2}$ "

Michael Miller Fabrics LLC.

118 west 22nd street 5th floor New York, NY 10011 Tel.212-704-0774 Fax.212-633-0272
website: www.michaelmillerfabrics.com email: mmf@michaelmillerfabrics.com