

Swallows

Quilt designed by Marinda Stewart. Quilt measures approximately 50" x 50"

Fabric	Yardage	Cutting
CX3505 Orchid	1 yard	Cut four 5-1/2" x 40-1/2" strips. Following the manufacturer's instructions and apply fusible web to the back side of the remaining fabric and fussy cut twenty-one large pink flowers.
CX2517 Blue	1 yard	Cut nine 9-1/2" squares.
CX3318 Spa	1/2 yard	Cut six 1-1/2" x 9-1/2" strips. Cut four 1-1/2" x 29-1/2" strips and two 1-1/2" x 31-1/2" strips.
CX3284 Kiwi	3/8 yard	Cut two 1" x 39-1/2" strips and two 1" x 40-1/2" strips. Cut four 5-1/2" squares. See instructions to cut appliques.
Jet Brown	Fat Quarter	Cut six strips random widths 1-1/4" to 2".
CX3195 Spa	Fat Quarter	Cut six strips random widths 1-1/4" to 2".
CX3284 Blossom	Fat Quarter	Cut six strips random widths 1-1/4" to 2".
CX3319 Violet	Fat Quarter	Cut six strips random widths 1-1/4" to 2".
CX3319 Kiwi	Fat Quarter	Cut six strips random widths 1-1/4" to 2".
CX3318 Orchid	Fat Quarter	Cut six strips random widths 1-1/4" to 2".
CX3356 Spa	Fat Quarter	Cut six strips random widths 1-1/4" to 2".
CX3184 Teal	Fat Quarter	Cut six strips random widths 1-1/4" to 2".
CX3184 Lime	Fat Eighth	See instructions to cut fifteen leaves.
CX3318 Kiwi	Fat Eighth	See instructions to cut sixteen leaves.
CX3248 Pink*	5/8 yard	Cut 2-1/4" bias strips necessary to make 5/8 yard of binding OR use Michael Miller Fabric's pre-made binding.

You will also need:

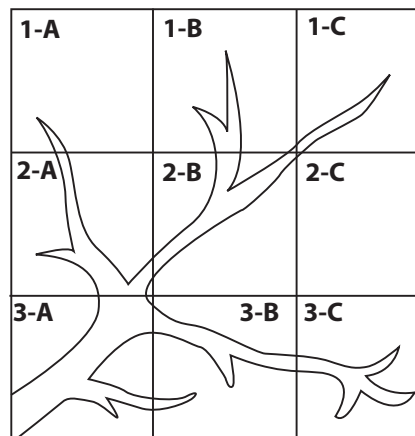
55" X 55" backing
 55" X 55" batting
 Fusible Web
 Threads to match, including black.
 Scissors, straight pins, acrylic ruler, mat, rotary cutter
 Chalk Pencil (optional)

Disclaimers

- This pattern is provided as a courtesy to quilt stores, catalogs and quilters. Michael Miller Fabrics, LLC is not responsible for the accuracy of any kits packaged to accompany this pattern. Please direct any inquires to the kit maker.
- Yardage requirements for this pattern may allow for excess yardage to accommodate specific placement of motifs or to allow for any fussy-cutting to achieve the finished quilt design.
- While every attempt has been made to give accurate measurements, yardage requirements and construction directions, this does not allow for personal variations in measuring, cutting and or sewing. the enclosed directions were used in the construction of the original quilt.

Assembly Instructions

- Following the manufacturer's instructions, trace the templates onto the paper side of the fusible web. Roughly cut out each shape 1/4" outside the drawn line.
- Following the block diagram, start with block 3-A, arrange branches on one 9-1/2" CX2517 Spa square as shown. Fuse in place. Continue with Blocks 3-B and 3-C matching branches. Repeat the process with Row 2 blocks and finish with Row 1 blocks. Add the birds to blocks 1-A and 2-C.



Placement of the branches in each block.

- Refer to the quilt photo and arrange the leaves and seventeen large pink flowers randomly and fuse in place. Fuse one Large Pink Flower to each 5-1/2" CX3284 Kiwi square for the Outer Border Corners.
- Machine applique all the raw edges of the appliques on each block to finish each Branch square.
- Starting and ending with a 9-1/2" Branch square keeping them in order, sew together three branch squares and two 1-1/2" x 9-1/2" CX3318 Spa strips to make one row. Make three rows total.
- Starting and ending with one 1-1/2" x 29-1/2" CX3318 Spa strip and sew together four strips and three rows to make the quilt top.
- Sew one 1-1/2" x 31-1/2" CX 3381 Spa strip to each side of the quilt top.
- Take all of the CX3195 Spa, CX3284 Blossom, CX3319 Violet, CX3319 Kiwi, CX3318 Orchid, CX3356 Spa and CX3184 Teal strips and piece them together randomly to make two 4-1/2" x 31-1/2" strips and two 4-1/2" x 39-1/2" strips.
- Sew one 4-1/2" x 31-1/2" pieced strip to the top and bottom of the quilt top. Sew one 4-1/2" x 39-1/2" pieced strip to each side of the quilt top.
- Sew one 1" x 39-1/2" CX3284 Kiwi strip to the top and bottom of the quilt top. Sew one 1" x 40-1/2" CX3284 Kiwi strip to each side of the quilt top.
- Sew one 5-1/2" x 40-1/2" CX3505 Orchid strip to the top and bottom of the quilt top.
- Sew one 5-1/2" Flower Block from Step 3 to each end of the remaining two 5-1/2" x 40-1/2" CX 3505 Orchid strip. Sew the strips to each side of the quilt top.
- Layer, quilt and bind as desired.

**"Swallows"
Templates
Reversed for
Fusible Applique**

2-C

2-B

Scale Check for Templates
When printing PDF
templates, this ruler
should measure 3" long.
If it doesn't, change
"page scaling" to "none"
in the print dialog box.



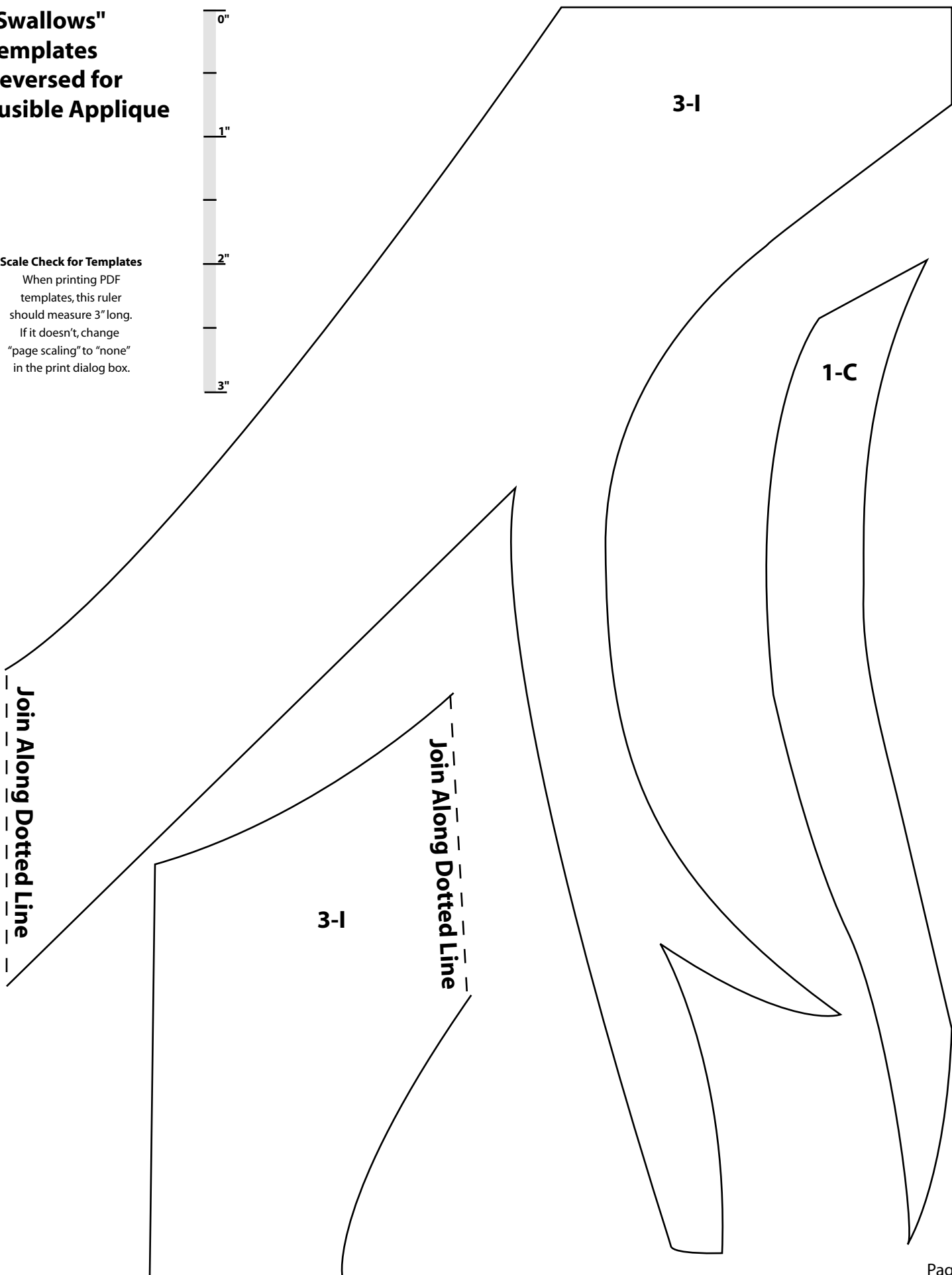
"Swallows" Templates Reversed for Fusible Applique

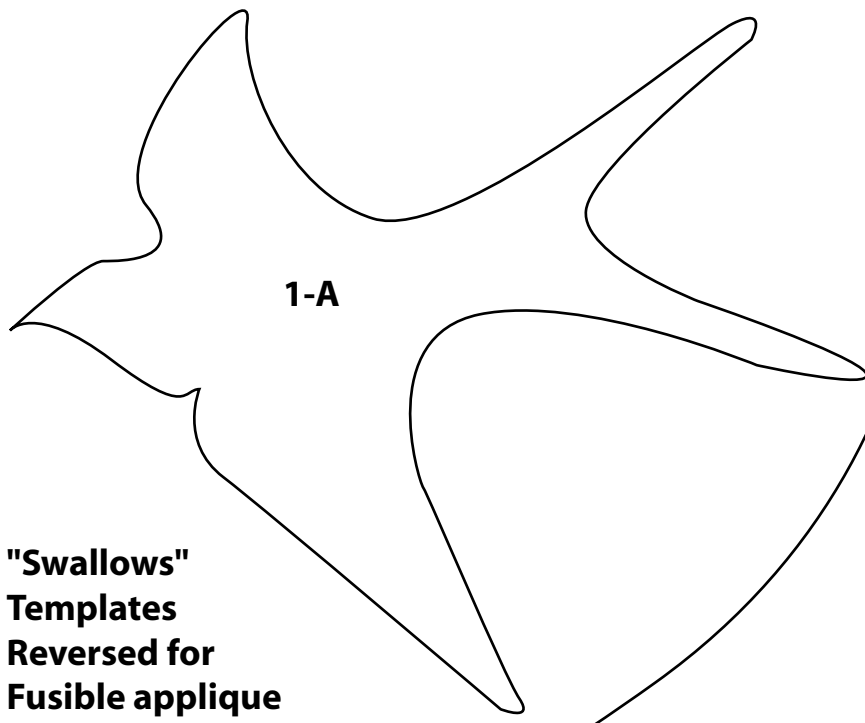


Scale Check for Templates

When printing PDF templates, this ruler should measure 3" long.

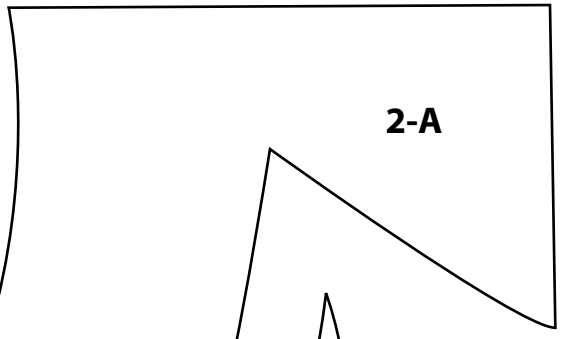
If it doesn't, change "page scaling" to "none" in the print dialog box.



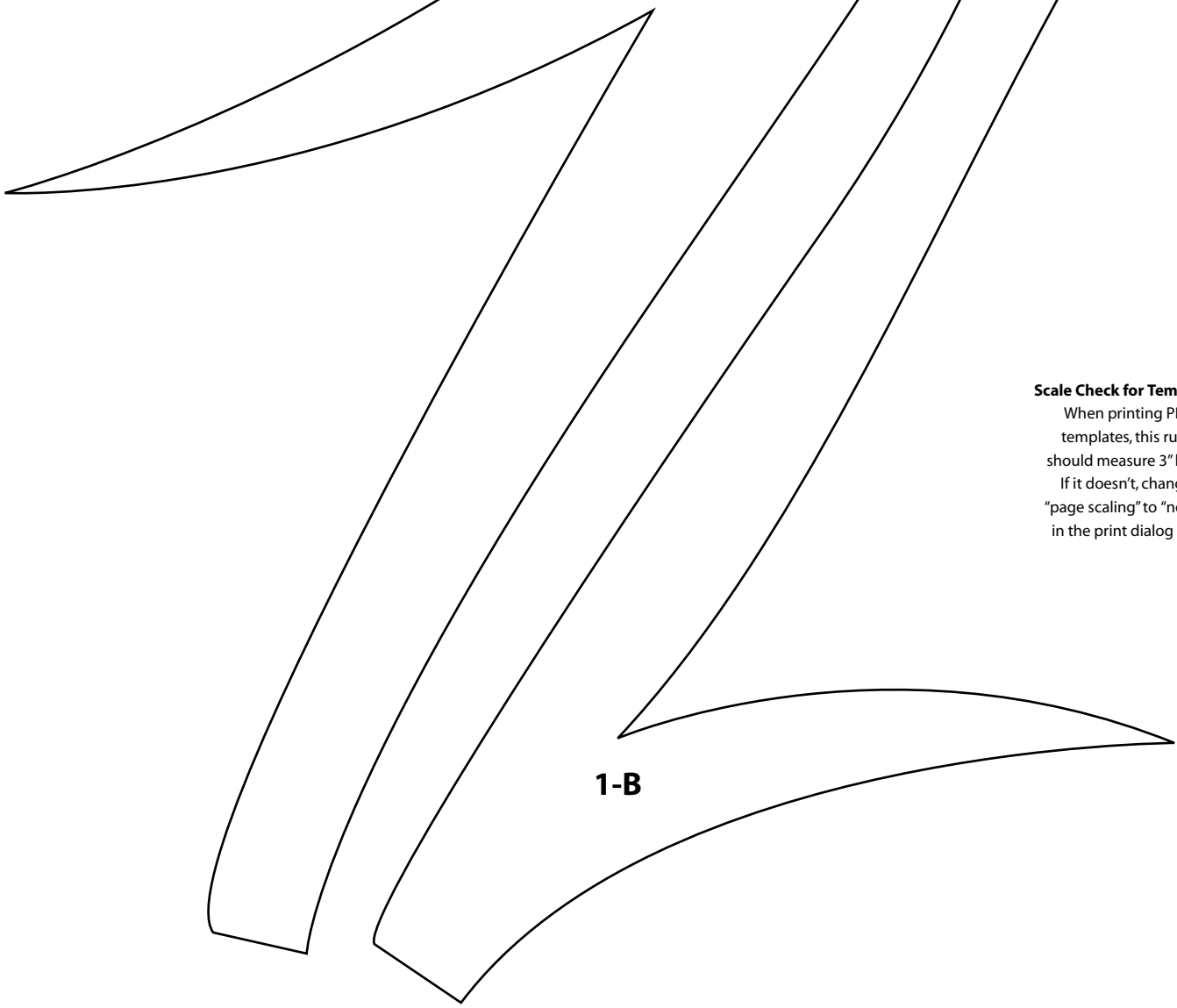


1-A

**"Swallows"
Templates
Reversed for
Fusible applique**



2-A

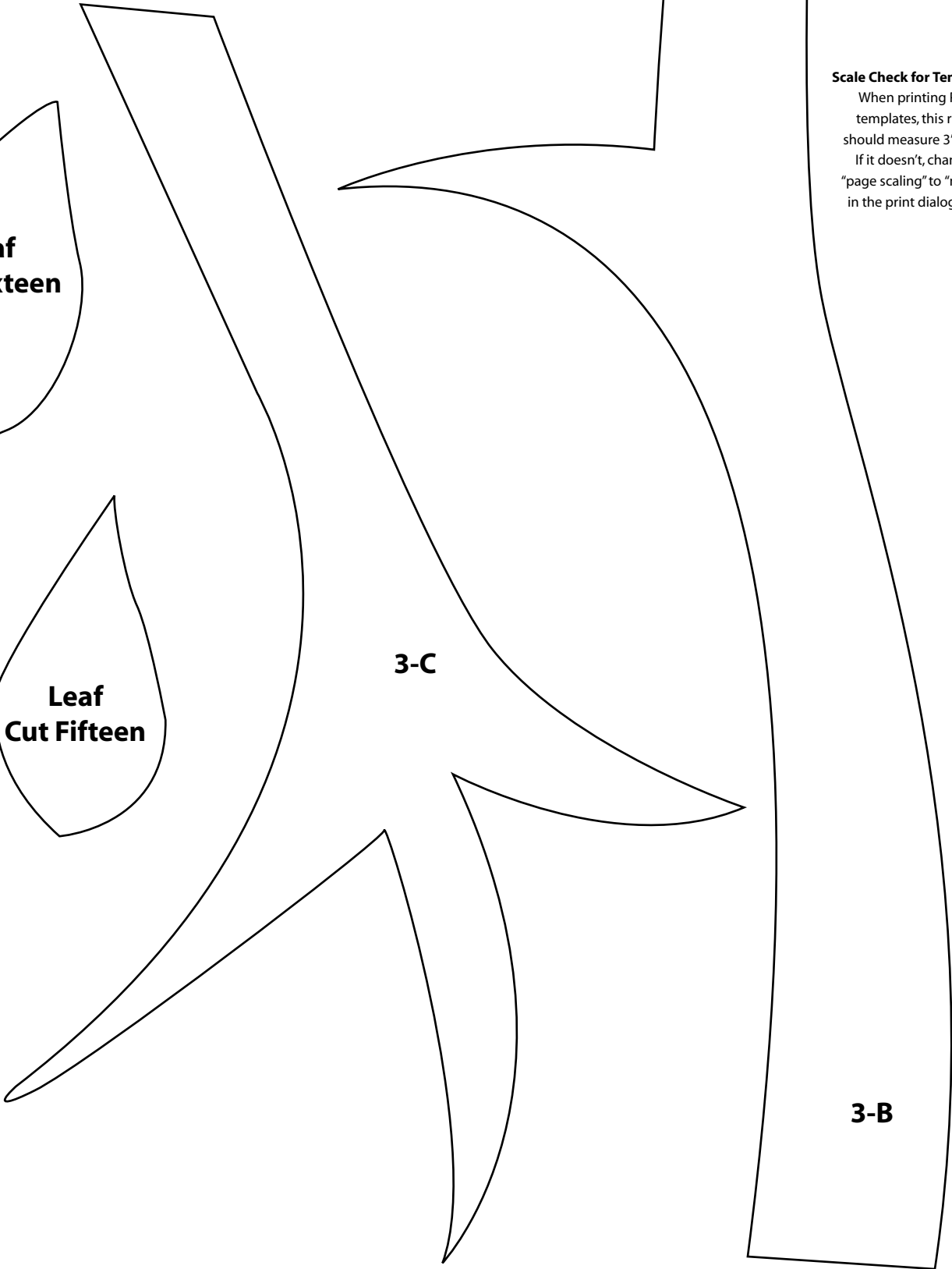
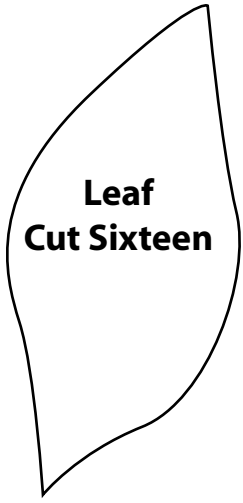


1-B

Scale Check for Templates
When printing PDF templates, this ruler should measure 3" long. If it doesn't, change "page scaling" to "none" in the print dialog box.



**"Swallows"
Templates
Reversed for
Fusible Applique**



Scale Check for Templates
When printing PDF templates, this ruler should measure 3" long. If it doesn't, change "page scaling" to "none" in the print dialog box.

