

Ruby Tulips

Ruby Tulips

by Ronda Beyer

Finished Quilt approximately 50" x 68"

CX2487 Ruby Tulips col. red	2 yards
CX2488 Baby Tulips col. red	¾ yard
CX239 Countertop Texture col. cherry	1 yard
CX2489 That's It Dot col. ruby	1½ yards
Jet Black	1 yard
Backing	4 yards
Batting	Twin size batt
Copy Machine for templates	
505 Spray and Fix	
Thread to match fabric for appliqué	

Disclaimers

1. This pattern is provided as a courtesy to quilt stores, catalogs, and quilters. Michael Miller Fabrics, LLC is NOT responsible for the accuracy of any kits packaged to accompany this pattern. Please direct any inquiries to the kit maker.
2. Yardage requirements for this pattern may allow for excess yardage to accommodate specific placement of motifs or to allow for any fussy-cutting to achieve the finished quilt design.
3. While every attempt has been made to give accurate measurements, yardage requirements and construction directions, this does not allow for personal variations in measuring, cutting and/or sewing. The enclosed directions were used in the construction of the original quilt.

1. From CX2489 That's It Dot, cut one piece 52" x 36". From CX2487 Ruby Tulips, cut one piece 52" x 36".

Using the scallop template, draw the scallop on the right side of the Dot fabric. Draw both the stitching line and the cut line. The high point of the scallop (stitching line) is 5" from the cut edge. The point of the scallop is 3½" from the high point of the stitching line.

Spray the wrong side of the Dot fabric with 505 Spray and Fix.

Cut out along the cut line, ¼" from stitching line.

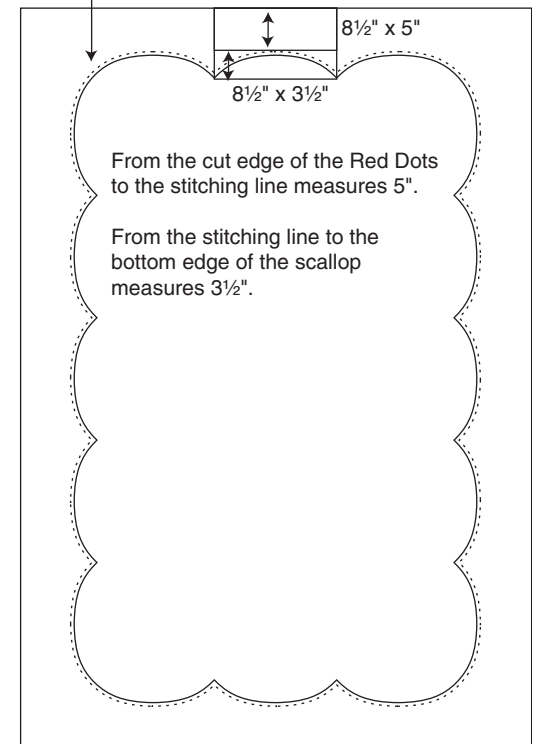
Snip curves where necessary to turn under ¼" along the scallop edge. Finger press the ¼" seam allowance under (it will stick to the 505 and stay in place.)

Place Dot fabric **WRONG SIDE DOWN ON RIGHT SIDE** of Tulips, matching outside edges. The 505 will keep the 2 pieces of fabric together, no pinning necessary. Slip stitch, hand or machine appliqué, or satin stitch the Dot fabric to the Tulips.

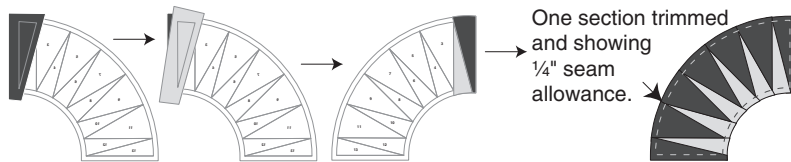
Note: You can place the two fabrics together before cutting the scallop, but you must be careful not to cut the Tulips underneath!

2. Make 12 copies of the template page.
3. From CX2488 Baby Tulips, cut 12 from Template A .

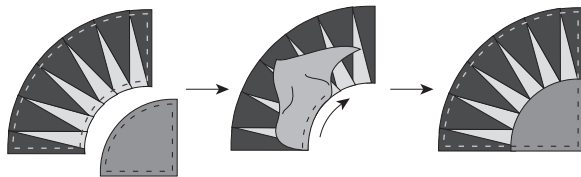
Two single scallops make the rounded corner.



- Using Jet Black and C239 Countertop Texture, paper piece 12 New York Beauty sections. Begin with black in space #1, placing black on the **WRONG** side of the paper piecing unit. Place red fabric right sides together with black fabric to cover space #2, stitch on line between #1 and #2. Press red fabric on the stitched line so that it covers space #2. Continue alternating black and red until all 13 sections are pieced. Trim section on outside solid lines.

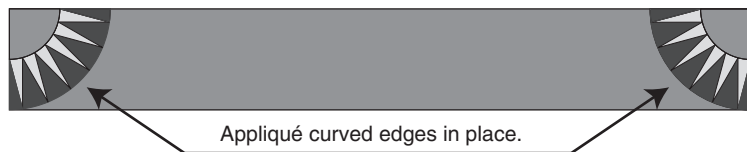


- Set-in template A to complete the New York Beauty unit.

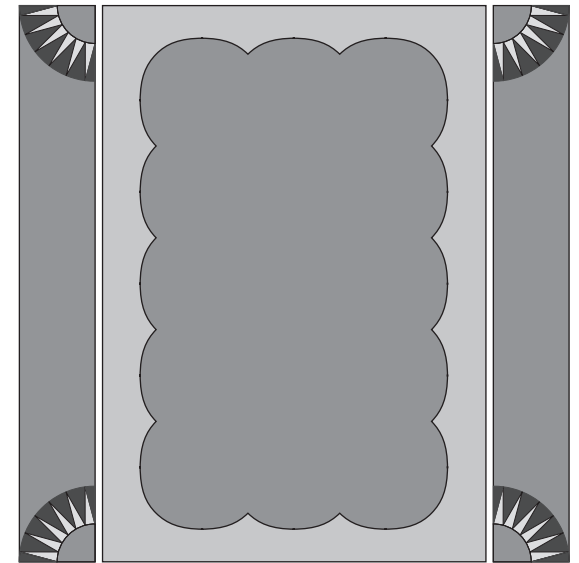


- From CX2487 Ruby Tulips, cut lengthwise of fabric, 1 strip 7 1/2" x 52" and 1 strip 7 1/2" x 36". Repeat and cut same size strips from CX2488 Baby Tulips.

Turn under curved edge of NY Beauty 1/4". Place wrong side of NY Beauty to right side of strips as shown below. Appliqué the curved edges of the NY Beauty units to the 4 strips.



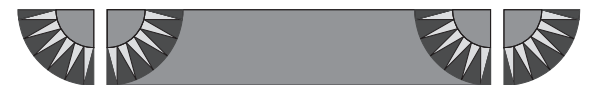
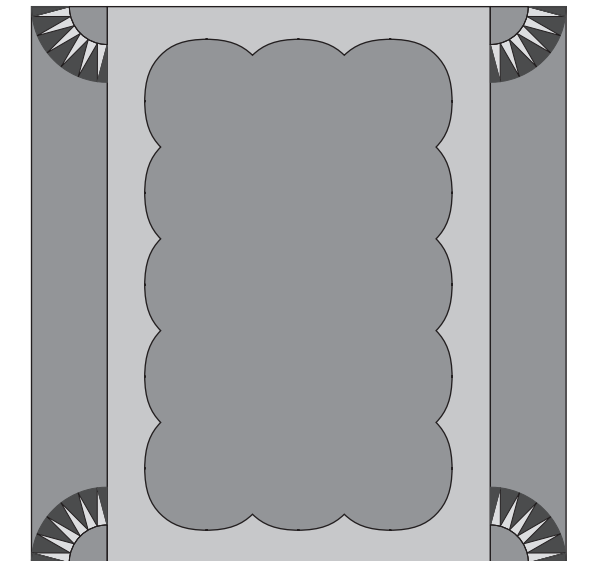
- Stitch the long strips to each side of the quilt center.



- Stitch the remaining NY Beauty units to each end of the short strips. Then stitch the strips to the top and bottom of the quilt center.



- Layer, quilt, and bind. Bind with C239 Countertop Texture.



Scalloped Edge

1

2

3

4

5

6

8

7

9

10

12

11

13

Stitching line
Cut line

A

