

## Fabric Requirements



**CM3675 Winter Temple One Motif**



**CX3307 Red Kimono Floral 3/8 yard**



**Jet Black 3/8 yard**



**CM3677 Bark Kyoto Blocks 1/4 yard**



**K1167 Krystal 1-7/8 yards**



**CX3308 Black Imperial Texture Fat 1/4**



**CM3676 Winter Winter Forest 1/4 yard**



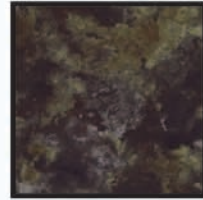
**Jet Brown 3/4 yards**



**K2255 Krystal Fat 1/4**



**CX1065 Snow Garden Pindot 1/4 yard**



**CX3060 Stone Water Spot 10" square**



**Backing Your Choice 55" x 55"**



**Batting 55" x 55"**

## Winter Temple



Quilt measures approximately 50" x 50"

Quilt designed by Marinda Stewart



118 West 22nd Street 5th Floor New York, NY 10011  
 Tel: 212-704-0774 Fax 212-633-0272 Email: info@michaelmillerfabrics.com  
 www.michaelmillerfabrics.com

# Winter Temple

Quilt designed by Marinda Stewart. Quilt measures approximately 50" x 50"  
**Always measure the quilt top before cutting border lengths.**

<b>Fabric:</b>	<b>Yardage:</b>	<b>Cutting</b>
CM3675 Winter	*7/8 to 1 yard	Cut one motif to measure 22-1/2" x 27-1/2" .
CX3307 Red	3/8 yard	Cut two 1" x 22-1/2" strips. Cut two 1" x 28-1/2" strips. Cut fourteen 3-3/4" squares. Cut seven 2-1/4" squares.
Jet Black	3/8 yard	Cut two 1" x 23-1/2" strips. Cut two 1" x 29-1/2" strips. Cut fourteen 1" x 5-1/2" strips. Cut fourteen 1" x 6-1/2" strips.
CM3677 Bark	1/4 yard	Cut two 1-1/2" x 24-1/2" strips. Cut two 1-1/2" x 31-1/2" strips.
K1167	1-7/8 yards	Cut one 8-1/2" x 26-1/2" Length of Fabric (LOF) piece. Cut one 11-1/2" x 26-1/2" LOF pc. Cut one 16-1/2" x 50-1/2" LOF pc. Cut two 1-1/2" x 50-1/2" LOF pcs. Cut eight 1-1/2" x 6-1/2" strips. Cut five 2-1/4" x Width of Fabric (WOF) strips for binding.
CX3308 Black	Fat Quarter	Cut fourteen 3-3/4" squares. Cut seven 2-1/4" squares.
CM3676 Winter	1/4 yard	Cut fourteen 3-1/2" squares.
Jet Brown	3/4 yard	See applique instructions for tree.
K2255	Fat Quarter	See applique instructions for pine boughs.
CX1065 Snow	1/4 yard	See applique instructions for snow mounds.
CX3060 Stone	10" x 10" pc.	See applique instructions for rocks.

\*One complete 27" long repeat is required. Adjust yardage accordingly.

## You will also need:

55" x 55" backing  
55" x 55" batting  
Fusible web  
Threads to match  
Scissors, straight pins, acrylic ruler, mat, rotary cutter

## Recommended:

White charcoal or light colored pencil  
Non-stick pressing sheet

## Disclaimers

- This pattern is provided as a courtesy to quilt stores, catalogs and quilters. Michael Miller Fabrics, LLC is not responsible for the accuracy of any kits packaged to accompany this pattern. Please direct any inquires to the kit maker.
- Yardage requirements for this pattern may allow for excess yardage to accommodate specific placement of motifs or to allow for any fussy-cutting to achieve the finished quilt design.
- While every attempt has been made to give accurate measurements, yardage requirements and construction directions, this does not allow for personal variations in measuring, cutting and or sewing. the enclosed directions were used in the construction of the original quilt.

## Assembly Instructions:

- 01) Sew one 1" x 22-1/2" CX3307 Red strip to the top and one to the bottom of the 22-1/2" x 27-1/2" temple motif. Sew one 1" x 28-1/2" strip to each side of the panel motif.
- 02) Sew one 1" x 23-1/2" Jet Black strip to the top and one to the bottom of the quilt top. Sew one 1" x 29-1/2" Jet Black strip to each side of the quilt top.
- 03) Sew one 1-1/2" x 24-1/2" CM3677 Bark strip to the top and one to the bottom of the quilt top. Sew one 1-1/2" x 31-1/2" strip to each side of the quilt top.
- 04) Sew one 8-1/2" x 26-1/2" K1167 piece to the top of the quilt top.
- 05) Sew one 11-1/2" x 26-1/2" K1167 piece to the bottom of the quilt top.
- 06) Sew one 16-1/2" wide x 50-1/2" high K1167 piece to the left side of the quilt top. Sew one 1-1/2" x 50-1/2" K1167 strip to the right side of the quilt top.

- 07) Place one 3-3/4" CX3307 Red square on top of one 3-3/4" CX3308 Black square, right side together. Draw a line across the diagonal of the top square (Fig. 1). Sew 1/4" away from each side of the drawn diagonal line (Fig. 1). Cut the two squares apart on the drawn diagonal line (Fig. 2) to make two half-square triangles (Fig. 3). Make twenty-eight half-square triangles total. Trim each block to measure an accurate 3" square.



FIG. 1



FIG. 2

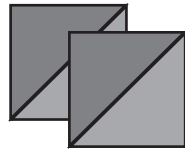


FIG. 3



FIG. 4

- 08) Cut each half-square triangle in half diagonally (Fig. 4).  
 09) Cut one 3-1/2" CM3676 Winter square in half diagonally. Sew one CM3676 triangle to one Red/Black triangle to make one 3" square (Fig. 5). Repeat to make twenty-eight 3" pieced squares.



FIG. 5



FIG. 6



FIG. 7



FIG. 8

- 10) Cut one 2-1/4" CX3307 Red square in half diagonally. Following Figure 6, sew one CX3308 triangle to the corner CM3676 on one pieced square. Flip down the triangle formed and press (Fig. 7). Repeat to make fourteen pieced blocks with a CX3307 Red triangles.  
 11) Repeat Step 10 with fourteen 2-1/4" CX3308 Black squares and the remaining 3" pieced squares.  
 12) Refer to Figure 8 to make seven diamond blocks total.  
 13) Sew one 1" x 5-1/2" Jet Black strip to the top and bottom of each Diamond Block. Sew one 1" x 6-1/2" Jet Black strip to each side of the Diamond Block.  
 14) Beginning and ending with a 1-1/2" x 6-1/2" K1167 strip, sew together eight K1167 strips and the seven diamond blocks alternating them to make one 6-1/2" x 50-1/2" pieced strip.  
 15) Sew one 1-1/2" x 50-1/2" K1167 strip to the right side of the 6-1/2" x 50-1/2" pieced strip.  
 16) Sew the pieced strip to the right side of the quilt top.

### Applique Instructions:

Following the manufacturer's directions, iron the fusible web onto the wrong side of the fabrics as directed below. Use the non-stick pressing sheet to protect the ironing surface from adhesive when backing the fabrics. Cut out the items as indicated and place them on the quilt top as shown. Finish the raw edges with a decorative stitch such as satin or buttonhole stitch.

- 17) From Jet Brown, free hand draw the tree as shown and cut out.  
 18) From K2255, free form cut the pine boughs as shown.  
 19) From CX3070 Stone, cut out three rocks: one small, one medium and one large as shown.  
 20) From CX1065 Snow, cut out the mounds of snow as shown.  
 21) Layer and quilt as desired. Using your favorite method bind the quilt with the the K1167 2-1/4" x WOF strips.